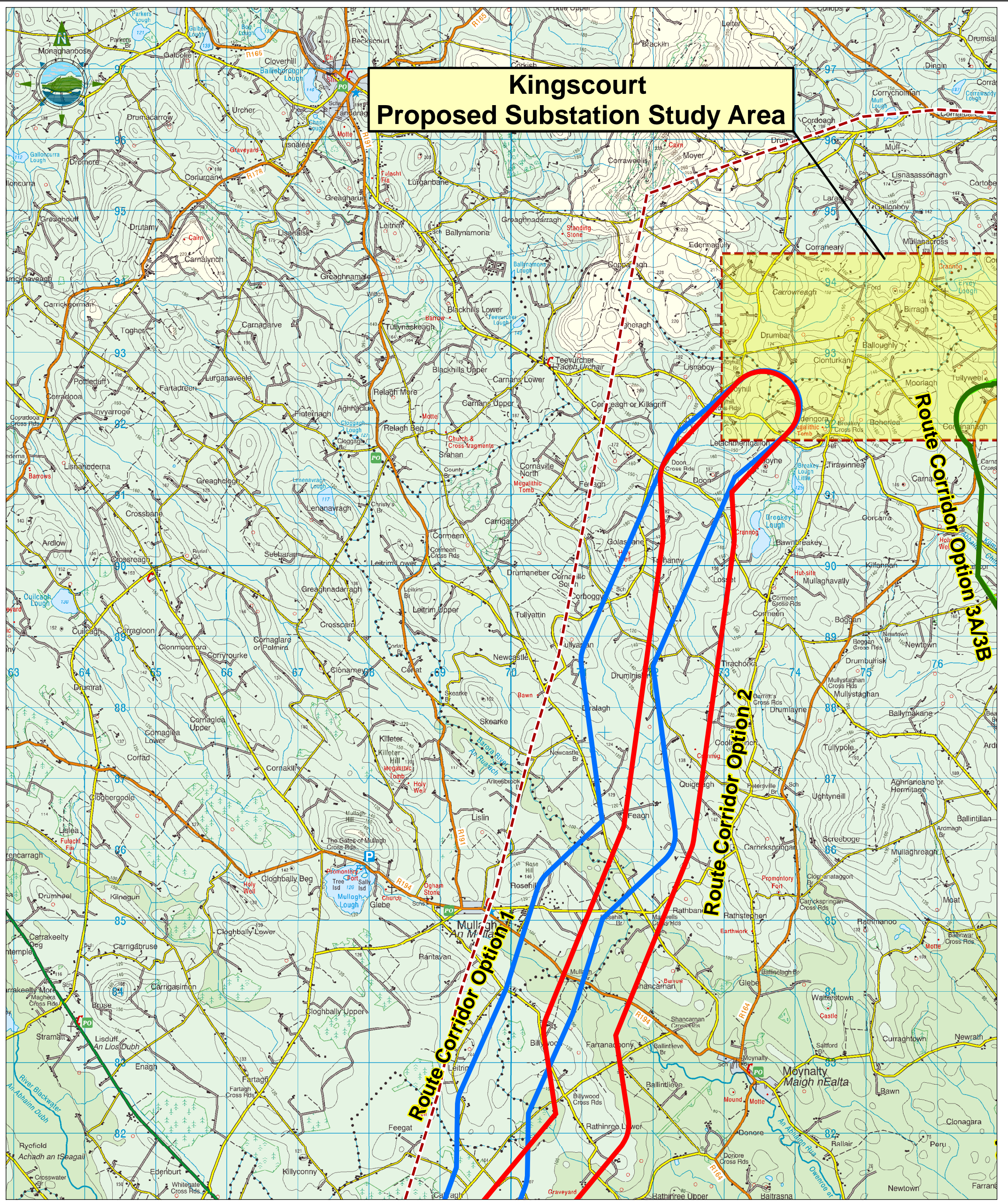


Kingscourt Proposed Substation Study Area



- LEGEND**
- Study Area: 400kV Power Line Route
 - Study Area: Proposed New Substation
 - Existing Substation Location
 - Route Corridor Option 1
 - Route Corridor Option 2
 - Route Corridor Option 3A
 - Route Corridor Option 3B

Scale @ A3: 1:50,000

DO	Date	Description	By	Chkd.
	01-10-07	First Draft Issued	PK.	M.H.

NOTES

- FIGURED DIMENSIONS ONLY TO BE TAKEN FROM THIS DRAWING
- DISCOVERY SERIES TILES USED: OS2628, OS2828, OS3028, OS2626, OS2826, OS3026, OS2624, OS2824, OS3024
- ALL LEVELS RELATE TO ORDNANCE SURVEY DATUM AT MALIN HEAD
- DESIGNATED CONSERVATION AREAS DATA SOURCED FROM NPWS



Project:
**PUBLIC CONSULTATION
KINGSCOURT TO WOODLAND
400kV OVERHEAD LINE ROUTES**

Title:
**ROUTE CORRIDOR
OPTIONS
SHEET 1**

Prepared by: P.Kelly
Checked: M. Hogan
Date: Oct 2007
Project Director: Ciaran O'Keeffe

soluziona

TOBIN
Patrick J. Tobin & Co. Ltd.

Consulting, Civil and Structural Engineers.
Block 10-3, Blanchardstown Corporate Park,
Dublin 15, Ireland

tel: +353-(0)1-8030406
fax: +353-(0)1-8030409
e-mail: info@tobin.ie
www.tobin.ie

2990-KW Figure: 3-1

Issue: D01