

110KV STATION MINIMUM ALL YEAR ROUND RATINGS		
BUSBAR	NOMINAL RATING	SHORT CIRCUIT RATING
BUSBAR	2500A	31.5KA
FEEDER BAY	1250A	31.5KA
TRANSFORMER BAY	1250A	31.5KA
COUPLER BAY	2500A	31.5KA
SECTIONALISER BAY	2500A	31.5KA

LEGEND		
LT	LINE TRAP	
SA	SURGE ARRESTER	
VT	VOLTAGE TRANSFORMER	
CT	CURRENT TRANSFORMER	

HV BAY CONDUCTOR RATINGS SHALL OULINE RATINGS FOR SUMMER WINTER & AUTUMN.

IEC DESIGNATOR (ESB DESIGNATOR)	DESCRIPTION
QB1(OB)	CIRCUIT BREAKER
QB1(OA)	BUSBAR DISCONNECT
QB2(OB)	BUSBAR DISCONNECT
QB9(OJ)	LINE DISCONNECT
QB9(OI)	TRATO DISCONNECT
OC9(OE)	EARTH DISCONNECT
OC9(OE4)	HIGH SPEED EARTH SWITCH
QB11/OB12/OB21/OB22	SECTIONALISER DISCONNECT
SA1-2 SA1/SA1-2 SA2/SB1-2 SB1/SB1-2 SB2	SECTIONALISER
QA1(SA1-2 OB, SB1-2 OB)	SECTIONALISER CIRCUIT BREAKER
QB1(K1-DA, K2-DA)	WING COUPLER
QB2(K1-DB, K2-DB)	BUSBAR DISCONNECT
QA1(K1-OB, K2-OB)	WING COUPLER CIRCUIT BREAKERS

- KEY
- NEW
 - FUTURE
 - CUSTOMER
 - MULTIPOLE CT
 - (OH) OVER HEAD LINE
 - CABLE SEALING END
 - CABLE

NOTE 1: THIS SLD IS AN ELECTRICAL REPRESENTATION OF THE STATION. FOR PHYSICAL LAYOUT REQUIREMENTS REFER TO EIRGRID GENERAL FUNCTIONAL SPECIFICATION XOS-GFS40-001.

NOTE 2: THE SPECIFIC MINIMUM 3 PHASE SHORT CIRCUIT BAY RATING 31.5KA APPLIES TO BOTH ELECTRICAL AND MECHANICAL FORCES.

NOTE 3: ALL NEW 110KV DISCONNECTS SHALL BE MOTORIZED (IN SINGLE AND DOUBLE BUSBAR STATIONS).

NOTE 4: SCS TBC. AS STATION.

NOTE 5: REFER TO PROJECT SPECIFIC PROTECTION SPEC FOR:
 1. SPECIFIC BAY CT & VT RATINGS, BURDEN & ACCURACY CLASS REQUIREMENTS.
 2. TELEPROTECTION CHANNEL REQUIREMENTS
 3. TX NEUTRAL EARTH REQUIREMENTS

NOTE 6: INSTRUMENT TRANSFORMER CORES & WINDINGS ARE NOT TO BE SHARED ACROSS THE PROPERTY BOUNDARY FENCE WITH THE EXCEPTION OF A CT CORE FOR DIFFERENTIAL PROTECTION AND A VT WINDING FOR VOLTAGE SYNCHRONISATION WHERE APPLICABLE.

NOTE 7: REQUIREMENT AND POSITION OF SA/CT/VT IN PP COMPOUND TO BE DETERMINED BY PP. CUSTOMER TO DEMONSTRATE THAT TSO CABLE IS SUITABLY PROTECTED FROM OVER VOLTAGES.

NOTE 8: CUSTOMER EQUIPMENT TBC.

NOTE 9: OWNERSHIP BOUNDARIES TBC.

NOTE 10: REFER TO THE PROTECTION SPEC FOR SINGLE POLE CIRCUIT BREAKER CONTROL REQUIREMENTS.

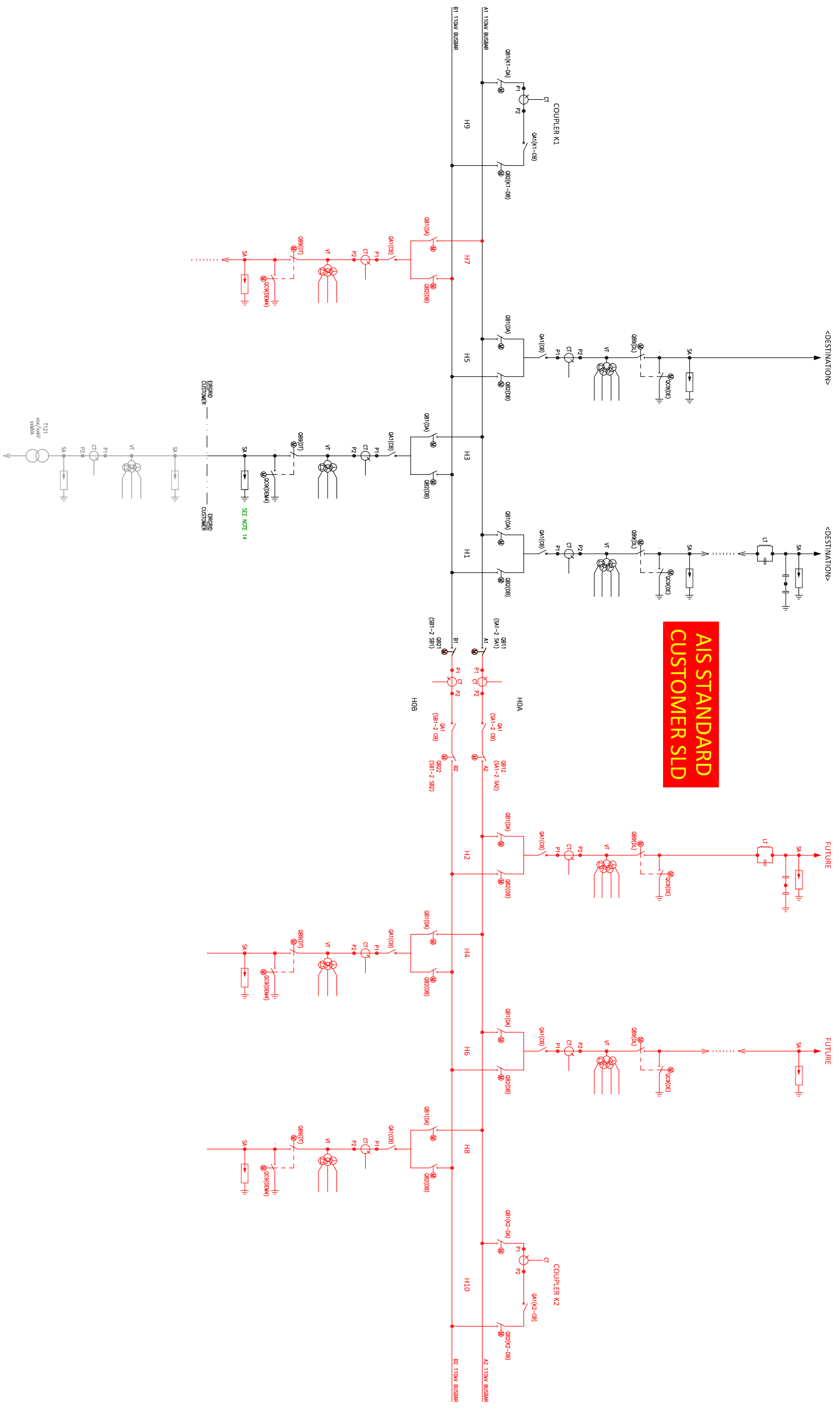
NOTE 11: A PROTECTION SLD SHALL BE SUBMITTED FOR DETAILED DESIGN & AS-BUILT PURPOSES INCLUDING THE FOLLOWING:
 1. HV PLANT RATINGS FOR ALL HV COMPONENTS INCLUDING PROTECTION REQUIREMENTS AS OUTLINED IN NOTE 3.
 2. A LEGEND OUTLINING PROTECTION RELAY DETAILS USED INCLUDING RELAY TYPE, ANSI DEVICE NUMBERS AND LOW RELAY WTR/ORDER CODE.
 3. PROTECTION RELAY INPUTS SHOWN WROED TO INSTRUMENT TRANSFORMER CORES.

NOTE 12: ALL SA REQUIREMENTS TO BE CONFIRMED BASED ON INSULATOR COORDINATION STUDY.

NOTE 13: (AS ILLUSTRATED ON DRAWING). HIGHER SHORT CIRCUIT RATING MAY BE REQUIRED DEPENDING ON LOCATION OF THE SUBSTATION CONNECTION.

NOTE 14: (AS ILLUSTRATED ON DRAWING). MANDATORY REQUIREMENT FOR SA PRIOR TO EIRGRID/CUSTOMER BOUNDARY.

REV	DESC	DRWN	CHECKED	APPROVED	DATE
00	FIRST ISSUE	JB	KF	PM	29/06/2015
01	SLD UPDATED IN LINE WITH LATEST AIS LAYOUT AND PROTECTION DETAILS REMOVED	CHC	NK	CF	16/09/2019
02	NOTES 10 & 11 UPDATED, NOTE 14 INCLUDED, NOTE INCLUDED BELOW RATINGS TABLE.	DA	NK	CF	21/11/2019



EIRGRID
 EirGrid plc
 The Oval, 160 Shelbourne Road,
 Ballsbridge, Dublin 4, Ireland
 Telephone: +353 1 677 1700
 Fax: +353 1 661 5375
 Email: info@eirgrid.com
 Web: www.eirgrid.com

COPYRIGHT © EirGrid plc
 All rights reserved. No part of this work may be modified or reproduced or copied in any form or by any means – graphic, electronic or mechanical, including photocopying, recording, taping or information and retrieval system, or used for any purpose other than its designated purpose, without the written permission of EirGrid plc

PROJECT		STANDARD TITLE	
STANDARD 110KV AIS CUSTOMER SLD		STANDARD 110KV C-TYPE AIS BUSBAR CONFIGURATION	
No of Shs	1	SIZE	A3
DRAWING NUMBER	XDN-SLD-STND-005	SHEET	N/A
		REV	02