
**Proposed 2016/2017 Transmission
Loss Adjustment Factors (TLAFs)
Accompanying Note
Version 1.0**

27 May 2016



Background

This explanatory paper has been prepared by the Transmission System Operators (TSOs) to accompany the proposed Transmission Loss Adjustment Factors (TLAFs) which have been calculated by the TSOs, based on the approved TLAF methodology (SEM-12-049), for 2016/17 (1st October 2016 to 30th September 2017).

TLAF Analysis

The overall TLAF trends are stable. Following a comparison between the 2015/16 TLAFs and proposed 2016/17 TLAFs, it was found that 89% of the TLAF's calculated are within 1% of the previous year's TLAF's and 99% are within 2%. The maximum change in TLAF for any participant is 3.2%.

The normal distribution in Figure 1 and the frequency distribution in Figure 2 below emphasise that the overall trends are stable.

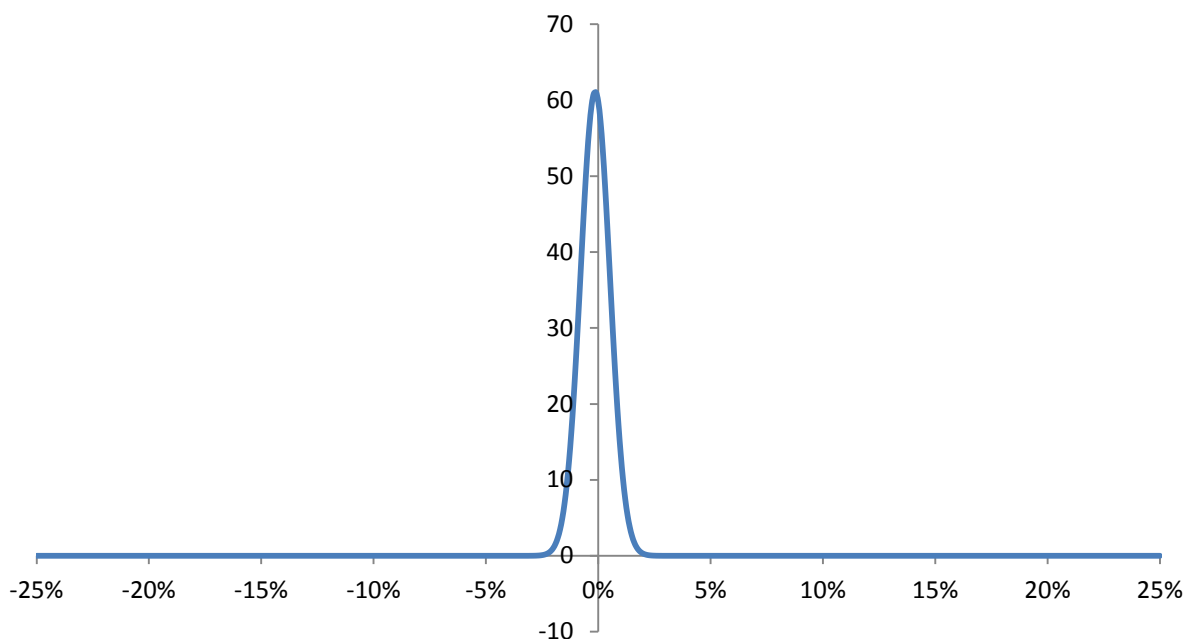


Figure 1 – Normal Distribution of changes in TLAFs from 2015/16 to 2016/17

Frequency

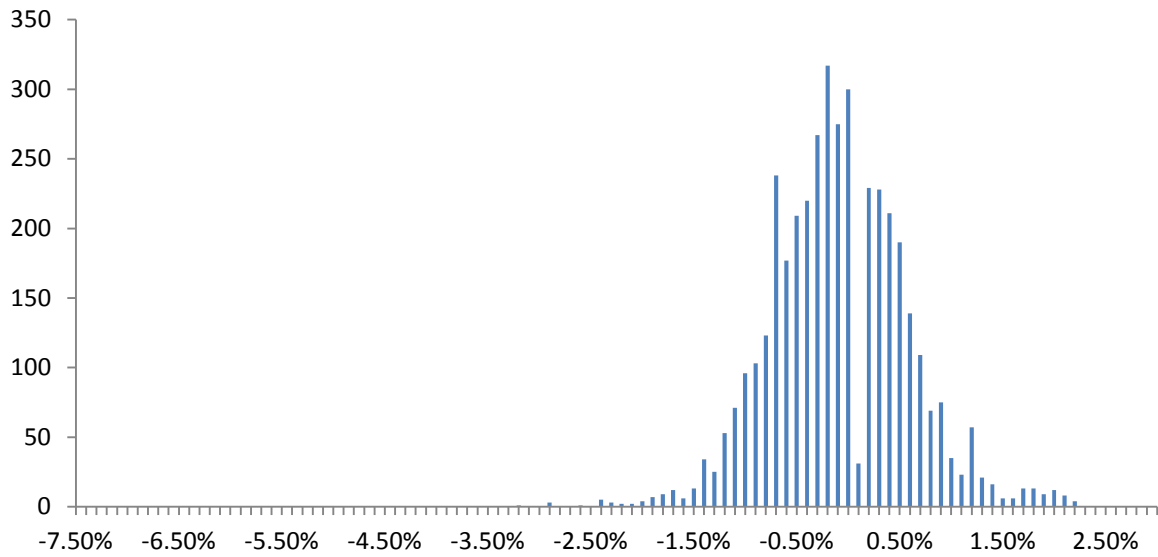


Figure 2 – Frequency Distribution of changes in TLAFs from 2015/16 to 2016/17

Contact

If you have any comments or queries on the TLAF's please contact either of the following by 10th June 2016:

Aoife Mills on aoife.mills@eirgrid.com

Or

Stephen McClure on stephen.mcclure@soni.ltd.uk