



# NORTH KERRY PROJECT

In the vicinity of Duagh,  
Knocknagashel and Lyracrumpane



# NORTH KERRY PROJECT

## Who is EirGrid?

**EirGrid, a state-owned company, is the national operator of the electricity grid.**

The national grid is an interconnected network of high voltage power lines and cables, the equivalent of the main roads, dual carriageways and motorways of the road network.

EirGrid's role is to operate, plan and develop the grid, to provide customers throughout the country - from rural and urban areas, to homes, farms, businesses and sports fields - with a safe, secure, reliable and efficient electricity supply.

In particular, development of the grid is essential to provide a platform for renewed economic growth and regional development, and is vital if we are to effectively tap into our abundant renewable resources.

## What is Grid25?

Grid25 is a major initiative to put in place a safe, secure and affordable electricity supply throughout Ireland, supporting economic growth and utilising our renewable energy resource to its maximum potential.

Grid25 will involve upgrading the high voltage system and an overall investment of approximately €4 billion to the period 2025. This new infrastructure is every bit as essential to the future growth of the country as any investment in road, rail and broadband.

Under Grid25, approximately €730 million will be invested in the development of the energy transmission infrastructure for the South-West region.

## What is required?

- A new 220/110 kV substation is required in North Kerry to the east of Listowel. This substation will connect into the existing 220 kV transmission line which runs from the Tarbert substation in Co. Kerry to the Clashavoon substation in Co. Cork. It will also connect into the existing 110 kV transmission lines which run from Tarbert to Trien in Co. Kerry and from Trien to Dromada in Co. Limerick.
- In addition a new 110 kV circuit is required to connect the planned Cloghboola 110 kV electricity substation to Trien 110 kV substation. A reconfiguration of Trien 110 kV substation is also required.

## Where is the project located?

A wide study area has been identified and examined. The project is in the area east of Listowel and in the vicinity of Duagh, Knocknagashel and Lyracrumpane. The townlands include: Ardydonagan, Bunglasha, Carhoearagh, Cloghboola, Derrindaff, Glashananoon, Kilmeany, Kilmorna, Knockaunbrack, Lacka East (E.D. Kilmeany), Lacka West, Muingwee, Patch, Shronebeirne, Toor, Trien, Trienearagh.





## What is the purpose of this briefing document?

The purpose of this document is to update the public on progress made since the last Information Day held in Duagh in May 2011.

As a result of feedback gained through the public submissions, statutory and non-statutory consultees, the project has progressed from an emerging preferred station site and corridors, to a preferred site and indicative route. These findings will be presented in a more extensive document the "Phase 2 Lead Consultant's Report\*". This will be available online in Dec 2011 at: [www.eirgridprojects.com/projects/northkerryproject](http://www.eirgridprojects.com/projects/northkerryproject)

The findings of this Stage 2 Report are the preferred site location and the indicative route for the circuits, as recommended by the Lead Consultants. This project solution emerged as a result of the information gathering in Stage 1 and option evaluation in Stage 2. Publication of this report will be followed by a consultation period during which the public are encouraged to give us your views on the key recommendations and findings.

For further information or for an explanation of any terms used in this document please see the FAQ page on our project website or alternatively contact us using the contact details provided on the back page of this document.

*\* The process from project initiation through to lodgement of planning application and subsequent construction has been divided into 5 phases or stages (see Project Roadmap in this brochure).*



# Planning Application Key Phases

# STAGE 2

## Project Development & Consultation Road Map

You are Here



You are Here

# Your Views are Important to Us

**We welcome all suggestions and queries. Please study the map on the next page and tell us your views on the preferred 220/110 kV substation site and indicative 110 kV circuit routes.**

## How was the emerging preferred solution determined?

**Several key criteria and inputs were taken into account by the consultants:**

**Visual Impact:** An assessment of the visual impact of the proposal on the environment was carried out in order to minimise the impact.

**Community:** An assessment of the local villages and communities was undertaken to reduce the proximity of the proposed infrastructure and ensure minimal impact on lifestyles of those living and working in nearby communities.

**Ecology:** A review of conservation designated areas, including Special Areas of Conservation (SACs), Special Protection Area (SPAs) and Natural Heritage Areas (NHAs) was completed.

**Cultural Heritage:** Architectural and archaeological heritage sites, including recorded archaeological monuments and places, protected structures, and national monuments, were assessed in an attempt to minimise any impact.

**Landscape:** A review of County Development Plans was undertaken in order to assess the numbers of scenic views, scenic routes, and vulnerable landscapes in the area.

**Geology:** Soil, subsoil and bedrock data was used to characterise & determine geology constraints.

**Water:** The surface water features were reviewed and river crossings minimised.

**Public Consultation:** The identification of constraints also included consultation with statutory and non-statutory consultees as well as the general public.

**Aerial Photography:** Aerial photography for the study area was obtained. This aerial photography was used as a basis for the constraints mapping and was in itself used as a means of identifying project constraints.

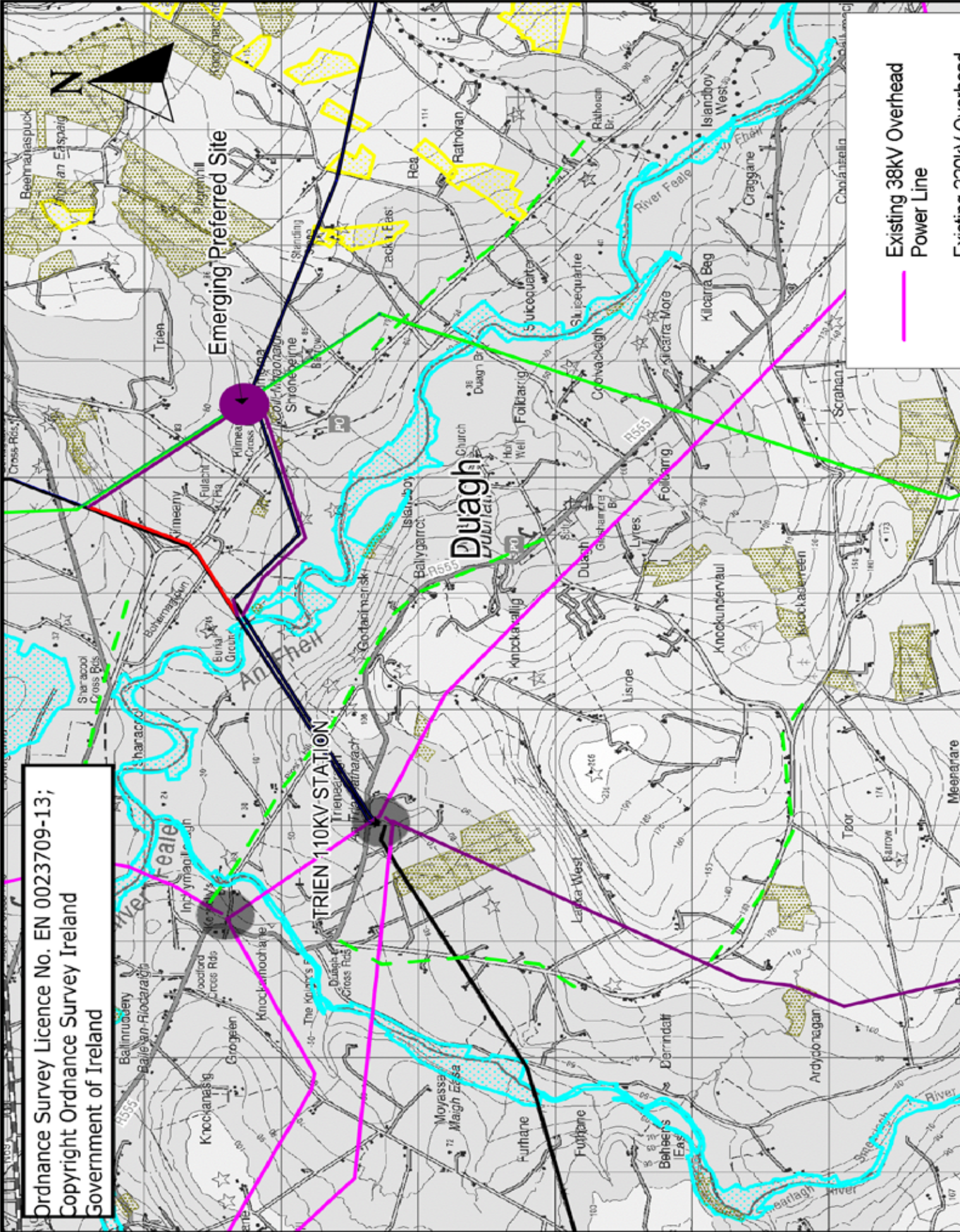
**OSI Mapping:** OSI Mapping under licence was obtained and used to identify possible constraints.

**An Post Geodirectory:** The An Post GeoDirectory identifies the precise address and location of residential and commercial property in Ireland. Information was obtained and mapped along with ongoing reviews of publically available data from Kerry County Council.

**Local History:** The study area is particularly interesting in regard to Irish History and every effort has been made to identify and give due recognition and protection to any sites discovered.

**Site Visits:** Frequent site visits were made by the project team to get a full appreciation of all identified constraints and the general appreciation of the topography/landscape of the study area.

Ordnance Survey Licence No. EN 0023709-13;  
Copyright Ordnance Survey Ireland  
Government of Ireland



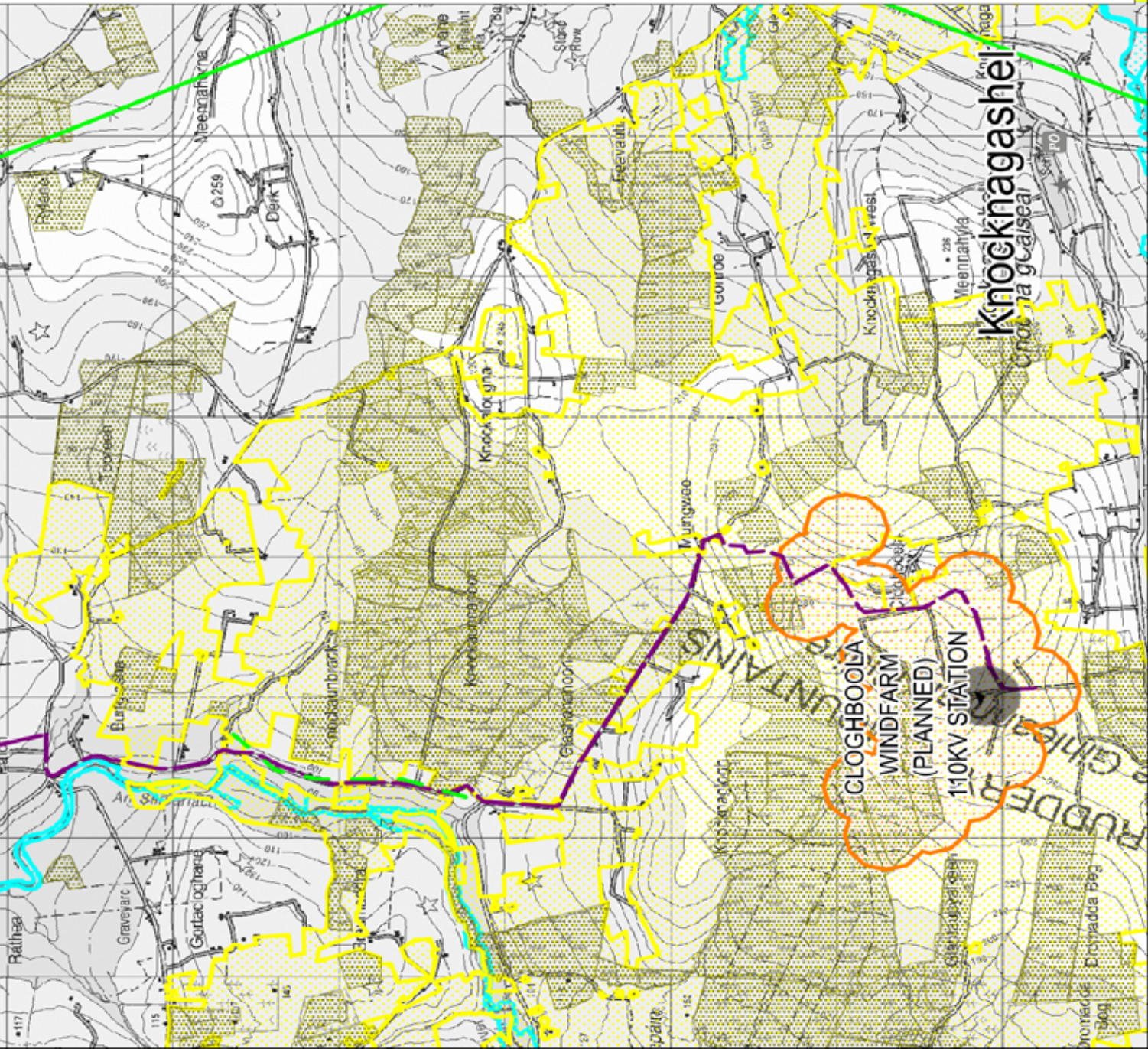
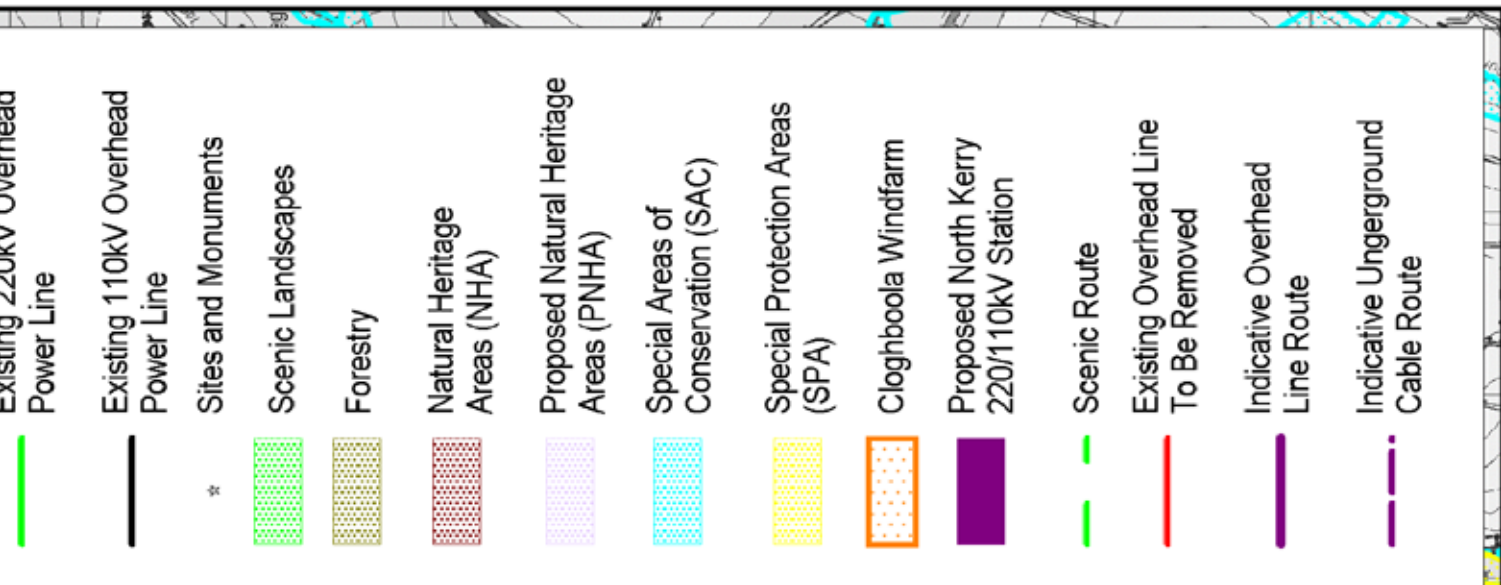
Emerging Preferred Site

TRIEN 110KV STATION

Duagh  
Dublet

Existing 38kV Overhead  
Power Line

Existing 200kV Overhead  
Power Line





## Why is it needed?

- The new substation will allow the region to utilise its abundant renewable energy resources.
- The existing network will not be able to accommodate the planned amount of wind generation planned for the area.
- It will allow for future growth in demand from both industry and domestic users.
- It will increase security of electricity supply for the entire County of Kerry.
- The development of the renewable energy sector is an important element in driving future job creation and is a key platform for economic recovery.

## Timing

- The new substation is required to be fully operational by 2014.
- A planning application is expected to be lodged with An Bord Pleanála in early 2012.
- Full public consultation will continue up until planning lodgement.

Thank you for taking the time to read this brochure.

## Contact Us

Tel: 01 702 6642  
Email: [northkerryproject@eirgrid.com](mailto:northkerryproject@eirgrid.com)  
Web: [www.eirgridprojects.com](http://www.eirgridprojects.com)



**GRID25**

DELIVERING IRELAND'S ELECTRICITY FUTURE

[www.eirgridprojects.com](http://www.eirgridprojects.com)