

All-Island Wind and Fuel Mix Report

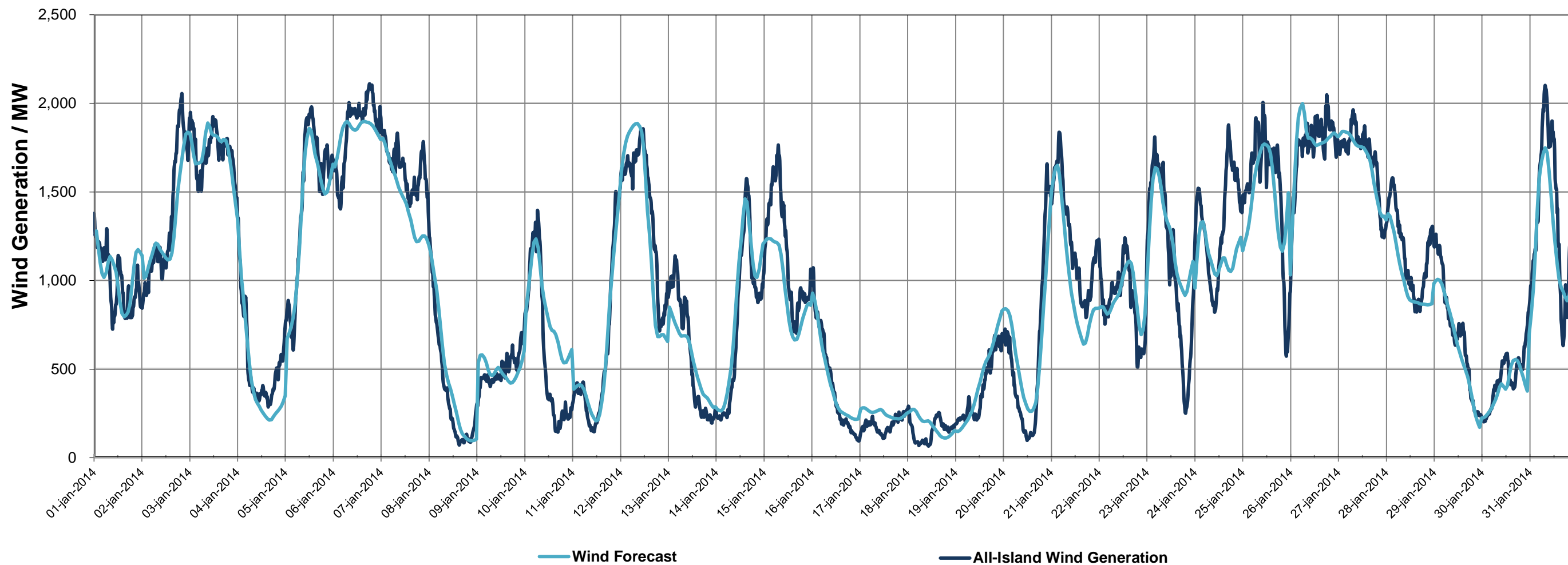
Group Operations

January 2014

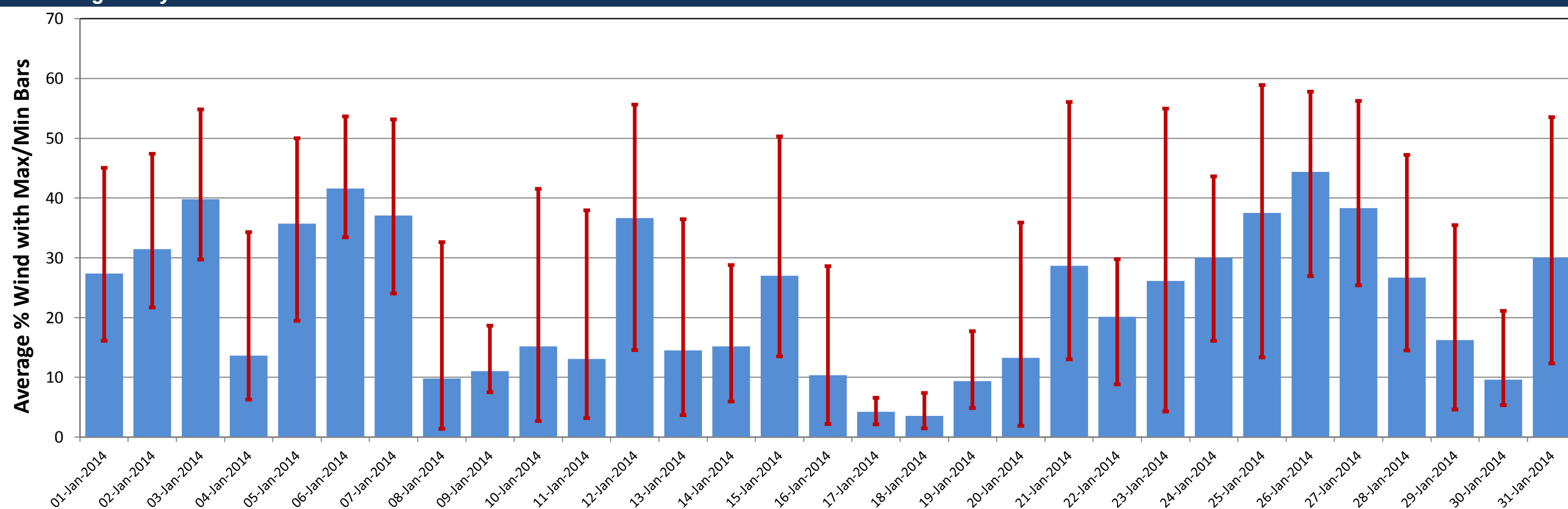
▼ System Data ▼

TSO	Installed Wind Capacity (MW)	Wind (MW)			Wind GWhrs	Monthly Wind Capacity Factor %	Demand* (MW)			Total GWhrs	Wind Penetration %			SNSP Max	Avg Abs Forecast Error
		Max	Min	Avg			Max	Min	Avg		Max	Min	Avg		
EirGrid	1,906	1,624	54	775	576	41.8	4,575	2,147	3,339	2,484	59.6	1.4	24.3		
SONI	531	493	0	206	154	38.9	1,724	664	1,138	847	62.5	0.0	19.7		
All-Island	2,438	2,110	66	981	730	41.1	6,246	2,814	4,478	3,331	58.9	1.4	23.1	49.8	8.9%

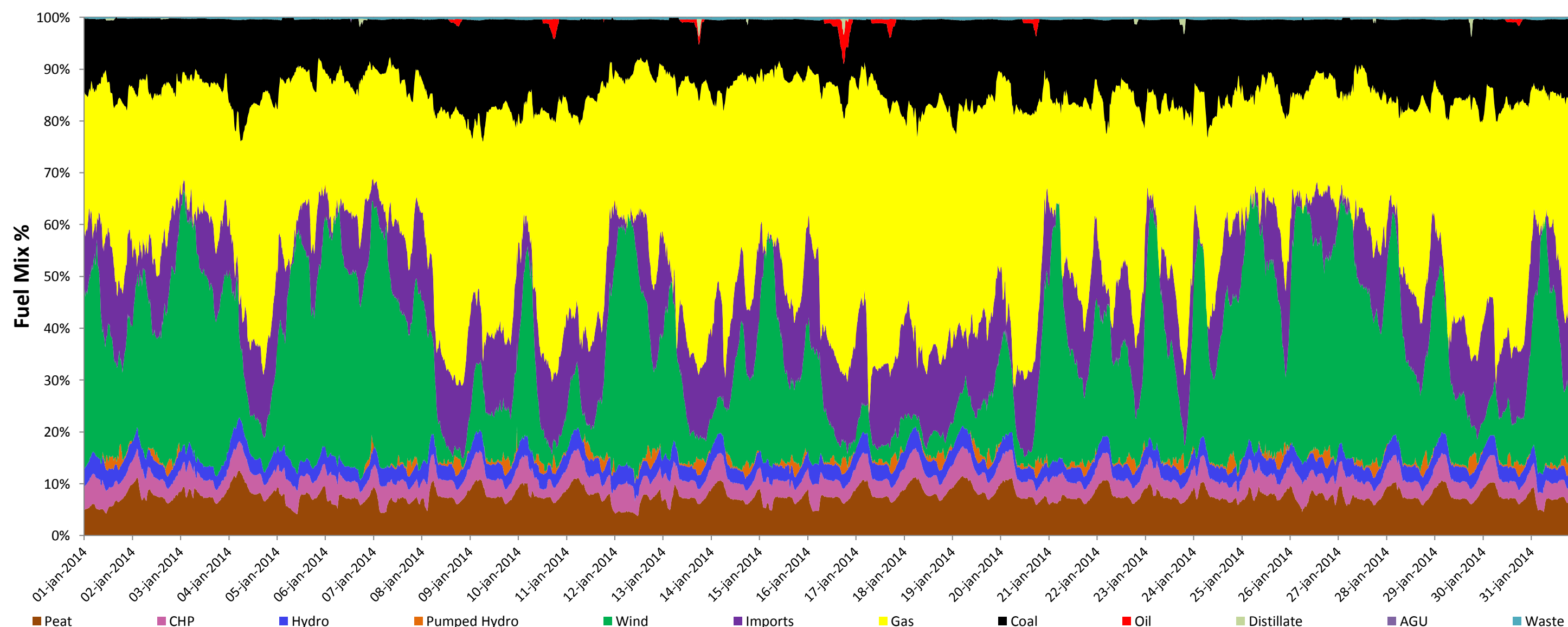
▼ All-Island Wind Generation and Forecast Wind ▼



▼ Average Daily Wind Penetration ▼



▼ Fuel Mix 15 minute Time-Series ▼



▼ General Information / Notes ▼

*Demand Data is based on Export plus Generation House Load
 System Data is based on 15-minute SCADA data
 Installed Wind MW based on SCADA and Registered data
 The maximum wind generation in the different jurisdictions does not necessarily occur at the same time
 SNSP - System Non-Synchronous Penetration is the sum of Wind generation and HVDC imports as a percentage of total generation
 While every effort has been made in the compilation of this report to ensure that the information herein is correct we cannot accept any responsibility or liability for any damage howsoever caused by reliance on the information presented here.

