

# All-Island Wind and Fuel Mix Report

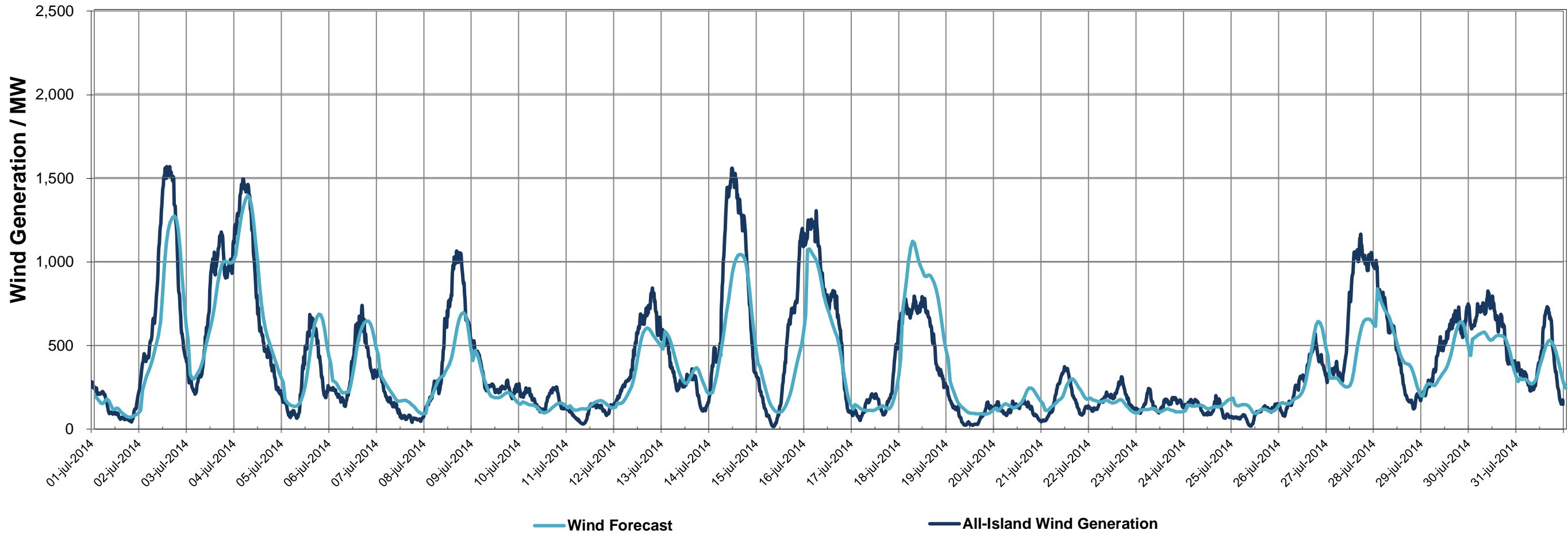
Group Operations

July 2014

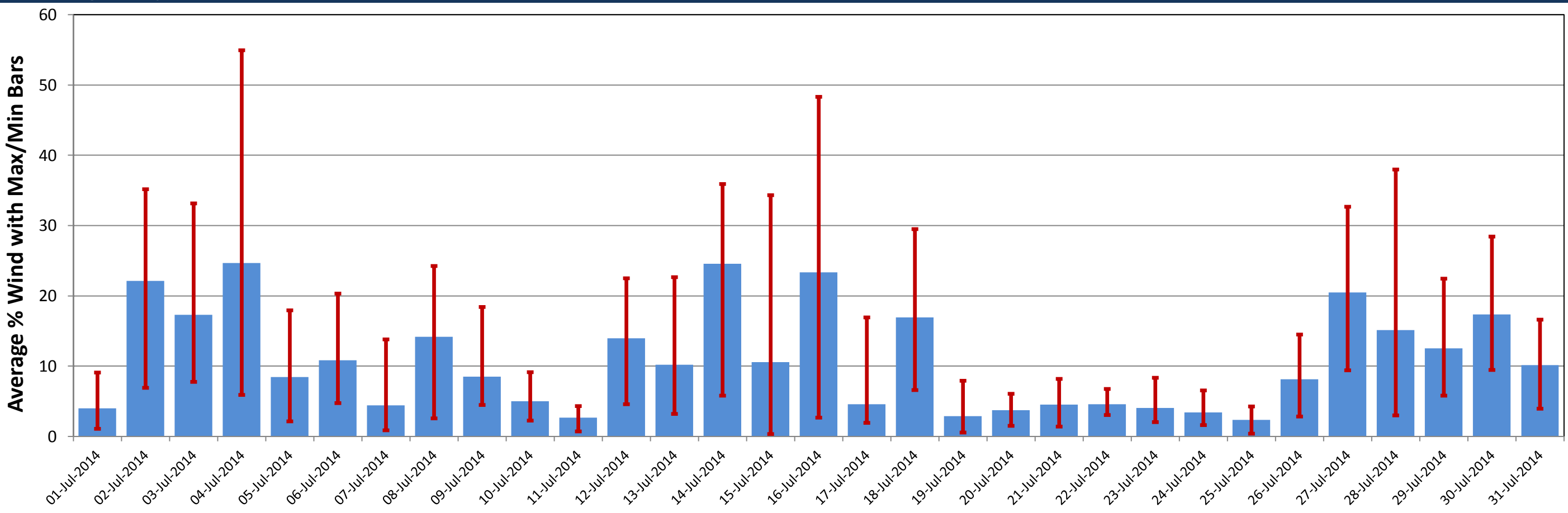
▼ System Data ▼

TSO	Installed Wind Capacity (MW)	Wind (MW)			Total GWhrs	Monthly Wind Capacity Factor %	Demand* (MW)			Total GWhrs	Wind Penetration %			Time Spent in Month				Avg Abs Forecast Error
		Max	Min	Avg			Max	Min	Avg		Max	Min	Avg	SNSP ≥ 40%		SNSP ≥ 45%		
EirGrid	2,055	1,250	8	306	228	14.9	3,637	1,751	2,806	2,087	54.7	0.2	11.2					
SONI	552	424	0	85	63	15.3	1,210	506	875	651	59.9	0.0	9.9					
<b>All-Island</b>	<b>2,607</b>	<b>1,570</b>	<b>14</b>	<b>391</b>	<b>291</b>	<b>15.0</b>	<b>4,755</b>	<b>2,279</b>	<b>3,680</b>	<b>2,738</b>	<b>54.9</b>	<b>0.3</b>	<b>10.8</b>	<b>30.5 hrs</b>	<b>4%</b>	<b>8.5 hrs</b>	<b>1%</b>	<b>4.6%</b>

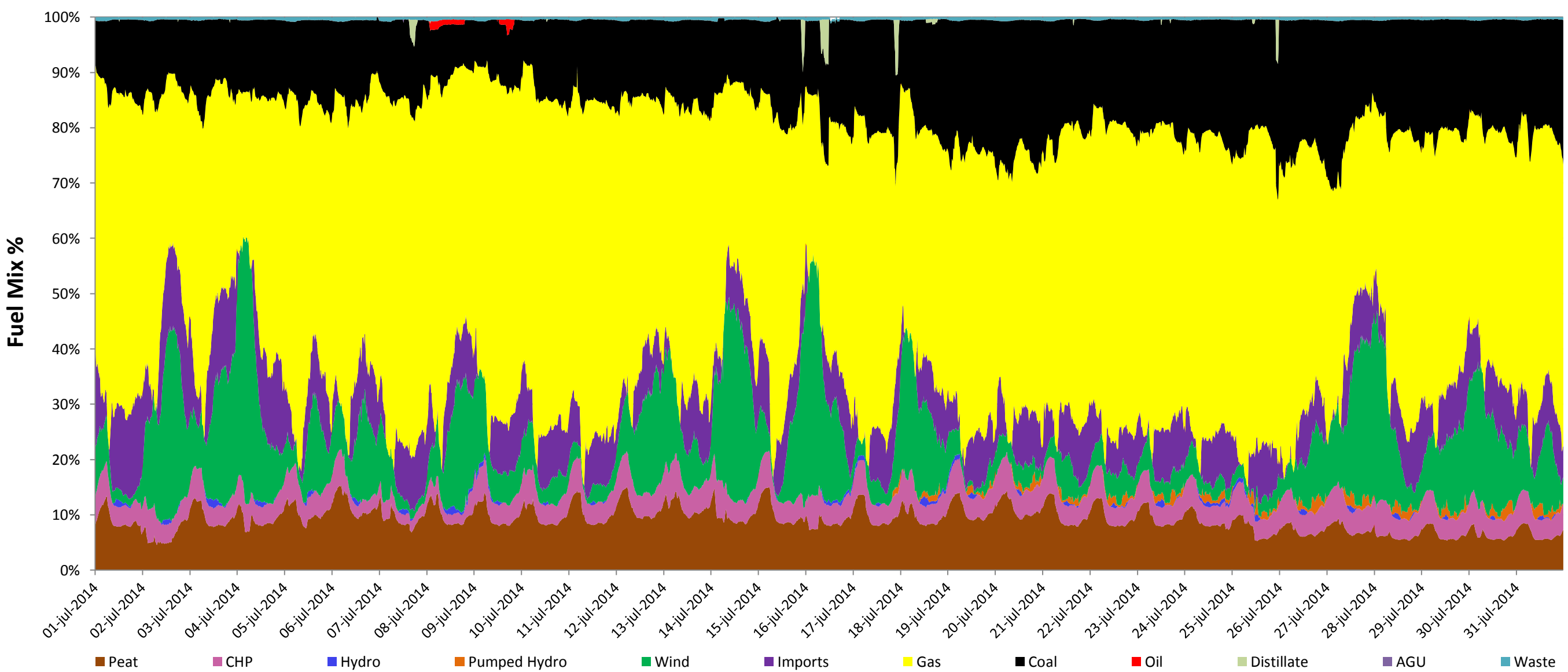
▼ All-Island Wind Generation and Forecast Wind ▼



▼ Average Daily Wind Penetration ▼



▼ Fuel Mix 15 minute Time-Series ▼



▼ General Information / Notes ▼

\*Demand Data is based on Export plus Generation House Load  
 System Data is based on 15-minute SCADA data  
 Installed Wind MW based on SCADA and Registered data  
 The maximum wind generation in the different jurisdictions does not necessarily occur at the same time  
 SNSP - System Non-Synchronous Penetration is the sum of Wind generation and HVDC imports as a percentage of total generation  
 While every effort has been made in the compilation of this report to ensure that the information herein is correct,  
 we cannot accept any responsibility or liability for any damage howsoever caused by reliance on the information presented here.

