



# **EirGrid Group** **Customer Conference 2012**

**25th October 2012**

*Delivering the Power System of tomorrow*



# Grid Delivery Update

**Andrew Cooke**

Director, Grid Development

25<sup>th</sup> October 2012



# What Grid25 involves

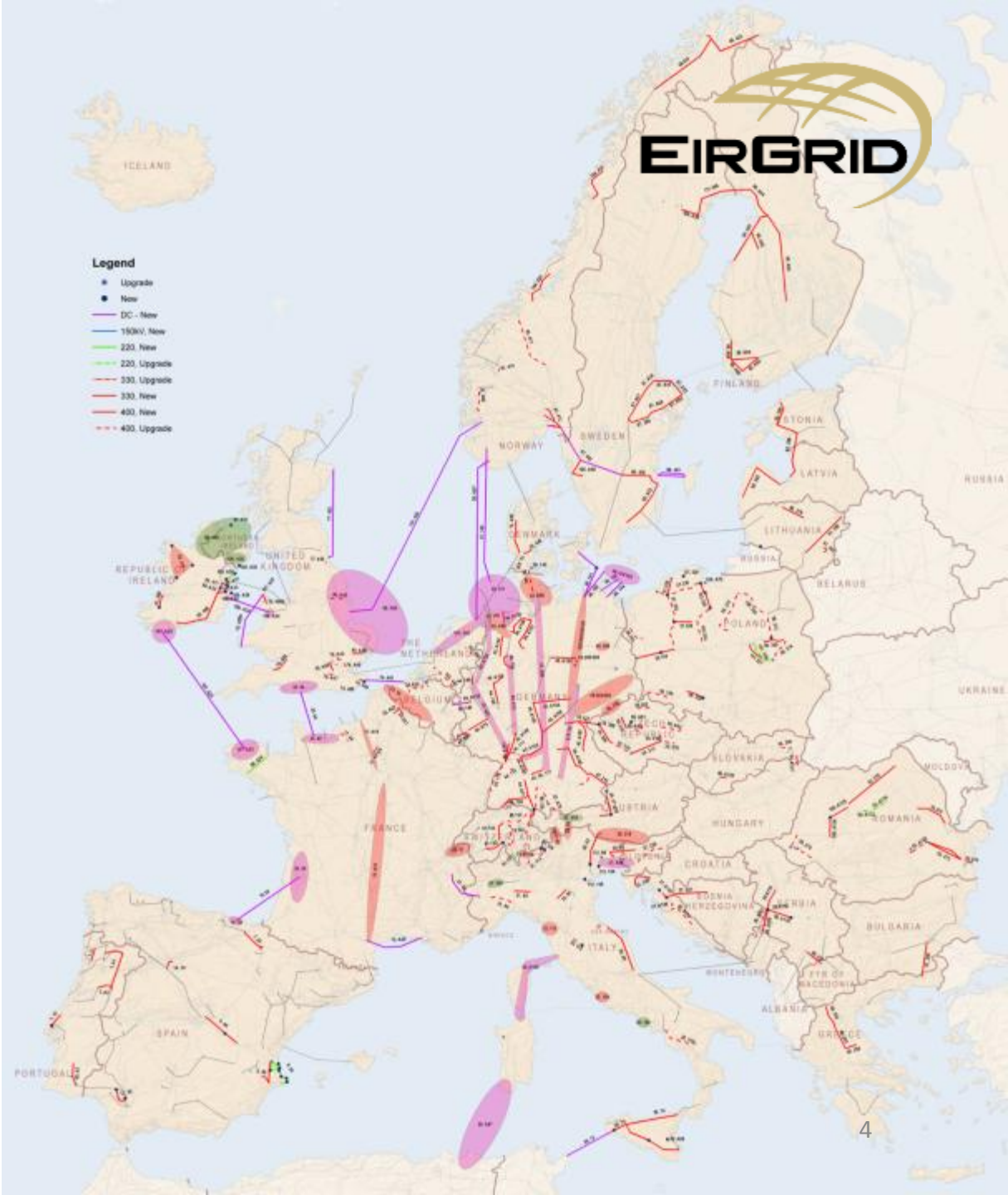


- More than 200 Grid25 projects
- 44 projects greater than €10m
- Over 2,000 km of line upratings
- 800 km of new build
- Significant number of new HV Stations (14 in development)
- €3.2bn expenditure

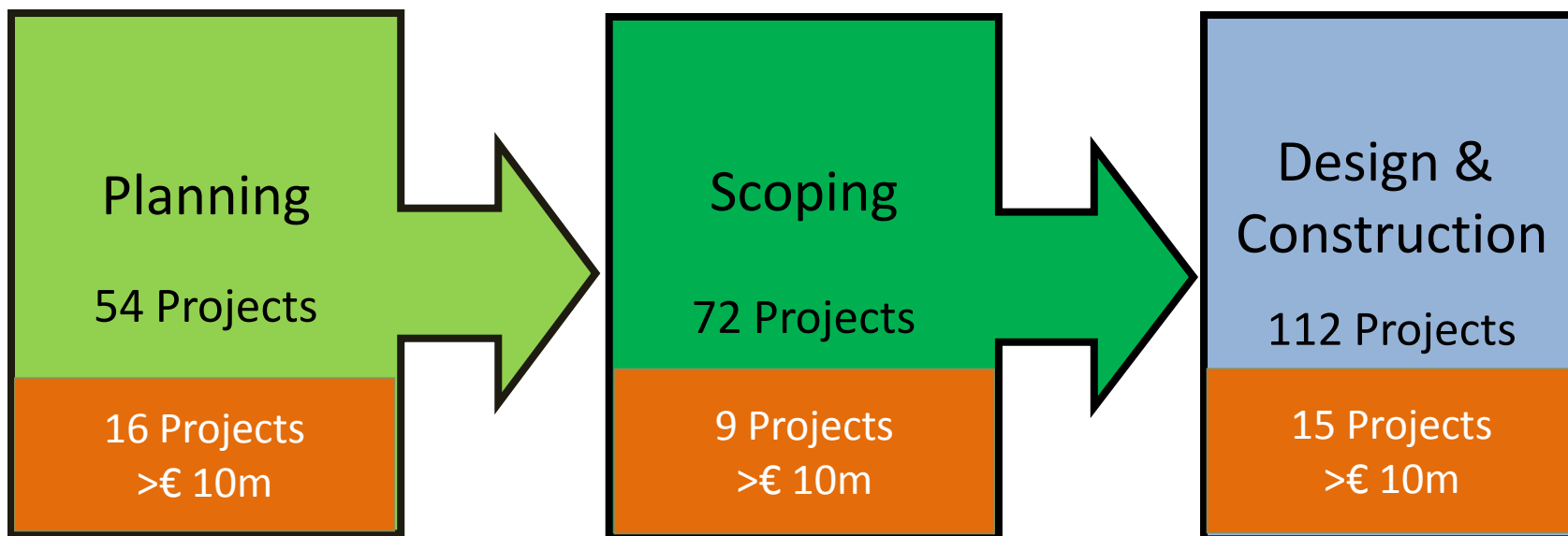


# Ten Year Network Development Plan (TYNDP)

- 30,000km new overhead line
- 10,000km lines upgraded
- 10,000km HVDC cable
- cost €97 billion



# Scale of Transmission Projects



# Grid25 Programme Progress Overview



**2010** 130km New Line  
340km Line Upgrades

**2011** 80km New Line  
300km Line Upgrades

**2012** 160km New Line  
300km Line Upgrades

**2013/14/15** 200km New Line  
1,150km Line Upgrades  
14x High-voltage stations

## GRID25 PROGRAMME MILESTONES ACHIEVED

The Map shows recent milestones achieved:

- 400kV Lines
  - 275kV Lines
  - 220kV Lines
  - 110kV Lines
  - 66kV Lines
  - 33kV Lines
  - 17kV Lines
  - 11kV Lines
  - 0.4kV Lines
- 400kV Stations
  - 275kV Stations
  - 220kV Stations
  - 110kV Stations
  - 66kV Stations
  - 33kV Stations
  - 17kV Stations
  - 11kV Stations
  - 0.4kV Stations



### RECENT INVESTMENT DECISIONS

- 1 Belmuck 110kV Station Busbar Upgrade
- 2 Cloos - Lanesboro 130kV Poletop Replacement
- 3 Rathkeale - Tubest 130kV Poletop Replacement
- 4 Rathfriland - Tully 110kV Line Upgrade
- 5 Charleville - Malton 110kV Line Upgrade
- 6 Newrypoint - Prospect 220kV Line Refurbishment
- 7 Bessie-Carroll to MCC Phase 1

### RECENT PLANNING APPLICATION SUBMISSIONS

- 1 Ankerwade 110kV Station Refurbishment/Replacement
- 2 Clashmore Downpatrick 130kV New Line

### RECENT COMMITTED PROJECT PARAMETERS

- 1 Carlow's Fall - Skeragh No. 2 33kV Line Upgrade
- 2 Carlow's Fall - Brinkens 110kV Line Upgrade
- 3 Thornberry 130kV Station Busbar Upgrade
- 4 Theales - Derrin 110kV Line Upgrade
- 5 Carralling 110kV Station Busbar Upgrade
- 6 Cloughan 110kV Station - New Station
- 7 Clashmore - Knocknaha 220kV Line Upgrade
- 8 ESB 180 Wind Farm - Shallow Water
- 9 Liffness Windfarm Extension
- 10 Galbia - Prospect 220kV Line Re-rigging
- 11 Aghlinoon - Nenahoe 110kV Line Re-rigging
- 12 Carrickmore 220kV Circuit Breakers
- 13 Liffness - Lough 150kV Line Refurbishment
- 14 East Bally Hill 220kV Station - New Station
- 15 North Bally 220kV Station - New Station
- 16 Shanawilladee 220kV Circuit Breakers

### RECENT PROJECT AGREEMENTS

- 1 Corlett - Ryebrook 110kV Line Spots

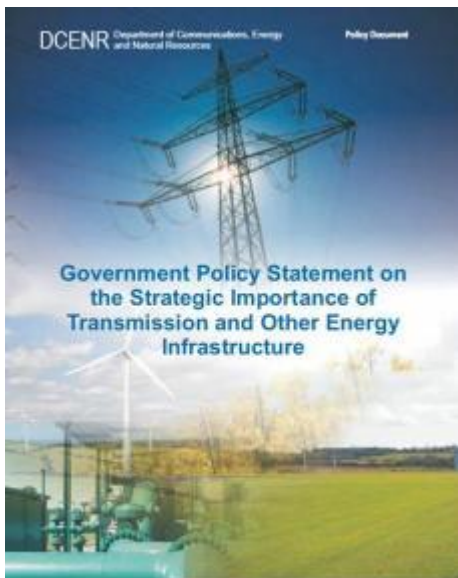
### RECENT ENERGIFICATIONS\*

- 1 Lodgebrook 220kV Station - New 110kV Transformer Bay

\* Please note that the inauguration of a project, or an element of a project, does not imply that all works of a particular project are complete.



# Government Policy Statement - Key Points



Mandated to deliver the State's network investment programmes in the most cost efficient and timely way possible.

The Government affirms that EirGrid [...]are obligated to adhere to all relevant guidelines and standards and they act in the national interest.

The Government underlines the imperative for the State Companies.....of early, transparent engagement and consultation with local communities and stakeholders....

The Government underlines the imperative [for] the appropriateness of building community gain consideration into project planning and budgeting

It is essential that Grid25 [...]is taken forward on the basis of the best available knowledge and informed engagement on the impacts and costs of different engineering solutions.

State Companies are required to address and mitigate, as necessary, human environmental and landscape impact in delivering the best possible engineering solutions.

 Roinn Cumarsáide, Fianáinín agus Acmhainní Náisiúnta  
Department of Communications, Energy and Natural Resources  
[www.dcenr.gov.ie](http://www.dcenr.gov.ie)





Consultation Process

Staged Approach

Published Process

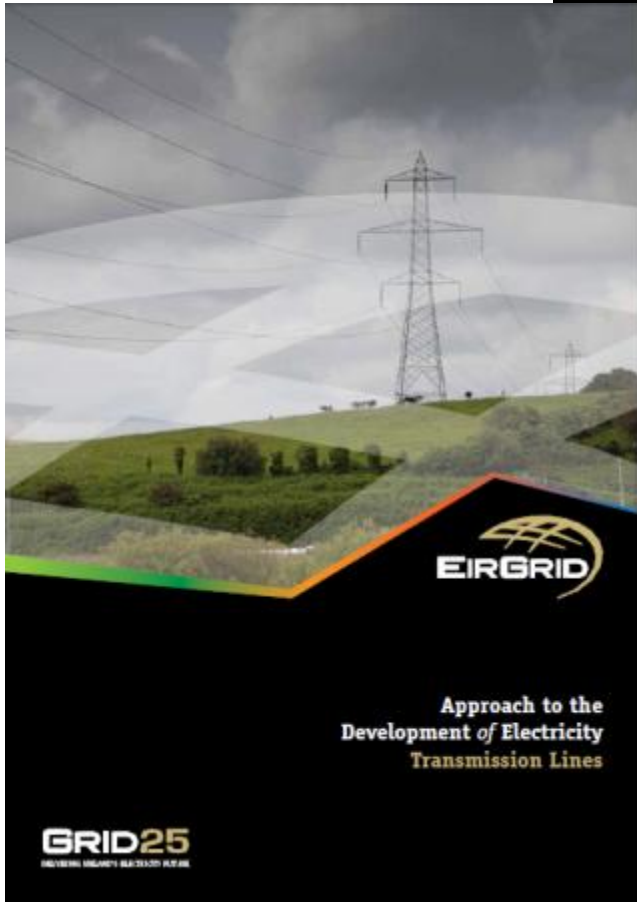
Recognition of Public Participation

'Hold Points'

Stage Reports



# Public Document: Approach to Development of Electricity Transmission Lines



## Introduction

EirGrid is a state-owned company that is responsible for operating and developing the electricity transmission grid in Ireland for the benefit of electricity consumers.

The purpose of the grid infrastructure is to support competition in the supply of electricity, to assist economic growth and to meet demand for electricity in Ireland.

The grid infrastructure is developed and operated by EirGrid, which is a state-owned company. The grid infrastructure is developed and operated by EirGrid, which is a state-owned company.

The grid infrastructure is developed and operated by EirGrid, which is a state-owned company. The grid infrastructure is developed and operated by EirGrid, which is a state-owned company.

The grid infrastructure is developed and operated by EirGrid, which is a state-owned company. The grid infrastructure is developed and operated by EirGrid, which is a state-owned company.

The grid infrastructure is developed and operated by EirGrid, which is a state-owned company. The grid infrastructure is developed and operated by EirGrid, which is a state-owned company.

The grid infrastructure is developed and operated by EirGrid, which is a state-owned company. The grid infrastructure is developed and operated by EirGrid, which is a state-owned company.

The grid infrastructure is developed and operated by EirGrid, which is a state-owned company. The grid infrastructure is developed and operated by EirGrid, which is a state-owned company.

The grid infrastructure is developed and operated by EirGrid, which is a state-owned company. The grid infrastructure is developed and operated by EirGrid, which is a state-owned company.

The grid infrastructure is developed and operated by EirGrid, which is a state-owned company. The grid infrastructure is developed and operated by EirGrid, which is a state-owned company.

The grid infrastructure is developed and operated by EirGrid, which is a state-owned company. The grid infrastructure is developed and operated by EirGrid, which is a state-owned company.

- Increasing the use of renewable energy sources
- Increasing competition in the electricity market

There are opportunities for engaging with EIRGRID throughout these stages, helping inform decisions with regard to the nature, extent and location of our projects.

While this overview is intended to give general guidance to our stakeholders in relation to the development of transmission projects, it must be understood that all projects are different and

- Local Communities and the General Public
- Planning Organisations
- Business Organisations
- Statutory Bodies
- Public Representative Bodies

## Stage One: Information Gathering STAGE 1

Having identified the technical need for new or enhanced grid infrastructure, EIRGRID begins the process of gathering technical, environmental and other information regarding the project.

The stage aims to provide a clear understanding of the technical need for the project, and to identify potential constraints and other options.

The main aim of this stage is to gather information on the technical, environmental and other information regarding the project.

Stakeholder comment and feedback on published documentation regarding the identified study area, the identified constraints/limits and on identified potential corridors and other options.

Stage one is the first real opportunity for public input in respect of a project. It is extremely useful for the public to engage with, and provide their knowledge to EIRGRID at this early stage, when no decisions have been made, and where there is considerable scope to influence the ongoing development of the project, by identifying what contributions should inform our judgement.

**Stage One Report**

A Stage One Report is prepared by EIRGRID, which sets out the need for the project, identifies the study area, and presents the information gathered to date. Constraints generally identify a number of identified potential options (technical corridors or other locations) and are considered at this stage to be the least controversial of these options to meet the need for the project. We make this report available to the public and other stakeholders, and invite feedback on its content, and issues arising.

**Public/Stakeholder Report**

At this stage of the project an extensive engagement with the local community and the general public within the identified study area of the project. We invite public and



### STAGE 1

Information Gathering  
Identify Project Study Area

- ### Output
- Explanation of project need
  - Identification of Study Area
  - Identification of environmental and other constraints
  - Identification of potential route corridors and/or other locations, including considered least controversial options or options
  - Publication of Stage One Report for public consultation and feedback



### Public

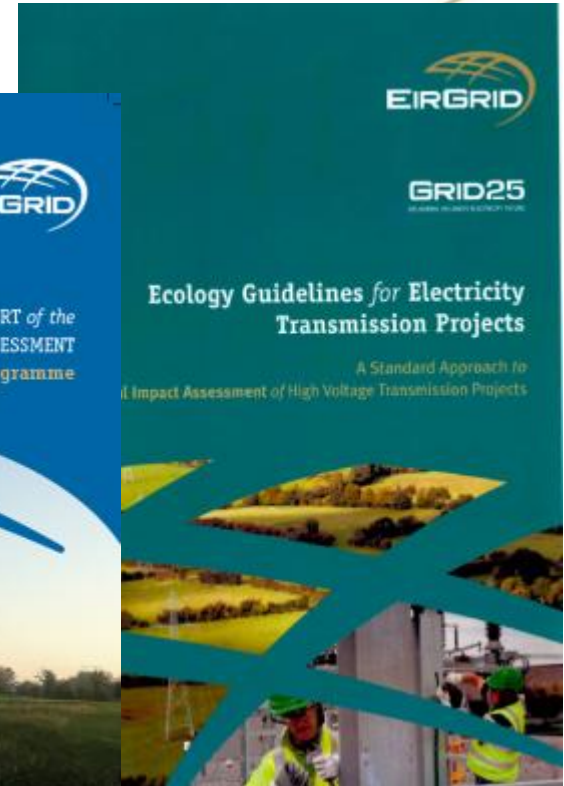
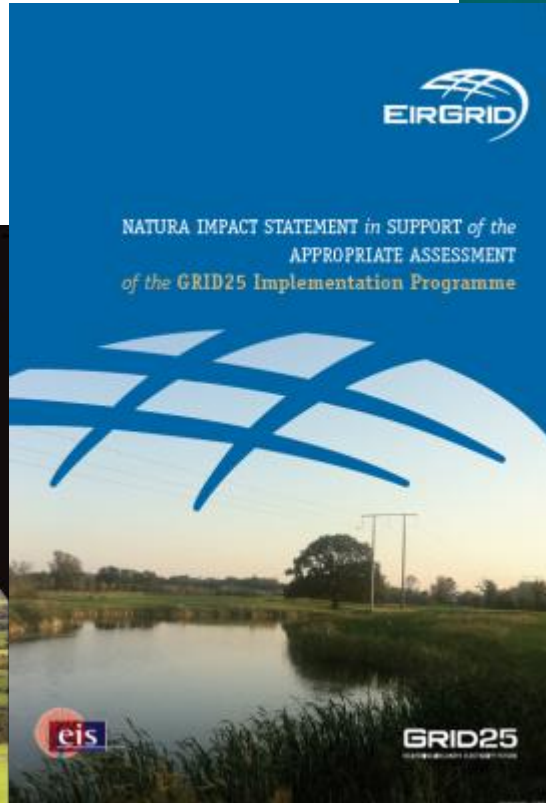
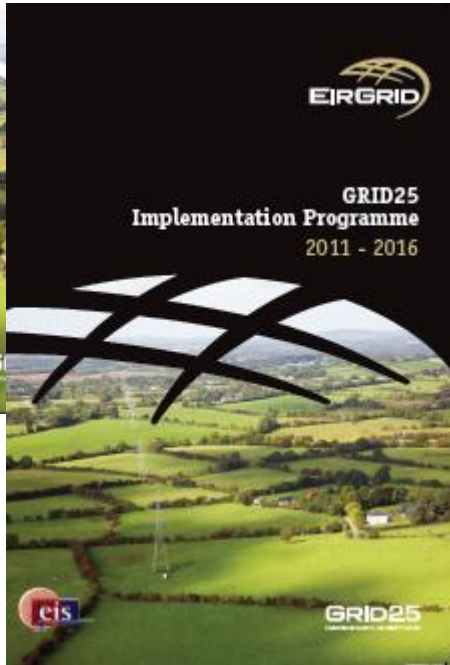
Public and stakeholder consultation on study area and constraints



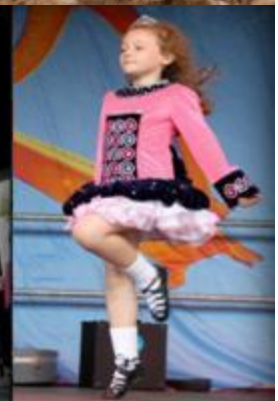
# Strategic Environmental Documents



**ENVIRONMENTAL REPORT**  
for the Grid25 Implementation Programme 2011-2016  
Strategic Environmental Assessment



# CSR/Outreach Programme/Stakeholder



# Stakeholder Consultation Results

# EirGrid outlines plan to invest €500 million in south east with new powerline by 2020

## IFA encourages landowners to engage in consultations

THE WEXFORD IFA Chairman is encouraging farmers and landowners to engage with EirGrid in initial public consultations planned as part of a major new electricity power link for Leinster and Munster.

Following the launch of this €500 million project planned by EirGrid to upgrade the electricity grid, IFA Chairman Ger Lyons says he is 'certainly' for the planned project, however has emphasised the need for EirGrid to be as flexible as possible with people in the consultation process.

'This project is necessary for growth,' said Mr. Lyons. 'We emphasise the importance of consultation and appeal to farmers and landowners to engage in the consultation process to outline any issues they may have,' he said. 'We would also be encouraging EirGrid to be as flexible as possible with people in the consultation process,' he said, adding that the IFA will also facilitate meetings with landowners if and when required during this project.



However, even the most negative minded towards this project would acknowledge that EirGrid is being most open about their plans, and have held public information meetings in an attempt to dispel some of the concerns.

Dungarvan Leader 22/06/12

## Eirgrid power link will be big boost for two provinces

## Chambers welcome Grid Link Project plan

CHAIRMAN of the Cork Regional Chambers, Michael Walley, on behalf of the seven chambers in Cork, welcomed Eirgrid's €500 million Link Project which consists of a new 400 kV overhead power line linking Leinster and Munster.

## Public's opportunity to have their say on new power line

AN OPEN DAY taking place in New- talk to us about the study area. Local knowledge is invaluable and all infor-

BY LEO McMAHON

sure the region can achieve its

fective w

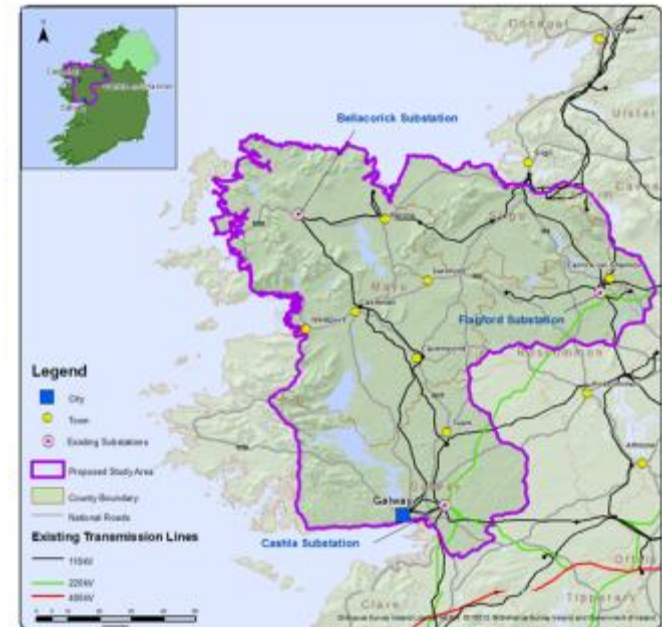


# Grid West Project Update



## Stage 1 of 5 Stage Roadmap

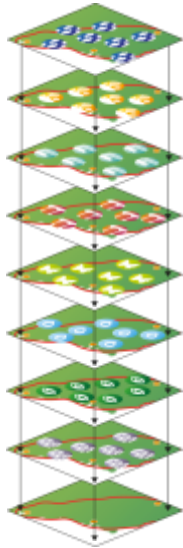
- **9 open days** have been held at **8 locations** across the study area – **SO FAR...**
- Constraints report published recently
- Positive response to launch and open days as public are asked to comment on the constraints report.
- Next Key Milestone is publication of Corridors in early 2013
- Planning Lodgement 2015
- Energisation 2019



## Study Area Scale

- ☐ 5 Counties
- ☐ Area 10,300km<sub>2</sub>

# Grid Link Project Update



- Population and Settlement Patterns
- Land Use
- Infrastructure and Utilities
- Cultural Heritage
- Biodiversity
- Water
- Landscape and Visual
- Soils and Geology

## Stage 1 of 5 Stage Roadmap

- 21 opens days in 17 locations – **SO FAR....**
- Constraints report recently published
- Next Key Milestone is publication of Corridors in early 2013
- Planning Lodgement 2015
- Energisation 2020



**Study Area Scale**

- 11 Counties
- < 450 Elected Reps
- 15 Local Authorities
- 1.7 million Citizens



# North South Project Update



## Stage 2 of 5 Stage Roadmap

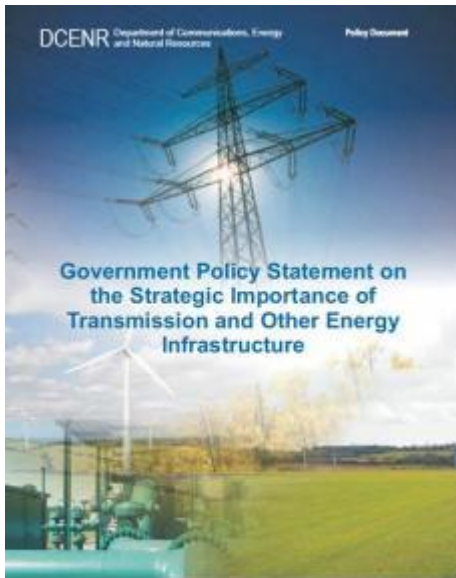
- Indicative route issued
- Project re-evaluation nearing completion
- Will have close regard for;
  - Recently published Government Policy Statement
  - International Expert Commission report
  - JOC interactions
  - Stakeholder including landowner inputs in 2 past years
- Project moving to stage 3 of the Roadmap in early 2013 onto next phase of consultation
- Planning lodgement later in 2013







# Government Policy Statement - Key Points



Mandated to deliver the State's network investment programmes in the most cost efficient and timely way possible.


The Government affirms that EirGrid [...]are obligated to adhere to all relevant guidelines and standards and they act in the national interest.

The Government underlines the imperative for the State Companies.....of early, transparent engagement and consultation with local communities and stakeholders....

The Government underlines the imperative [for] the appropriateness of building community gain consideration into project planning and budgeting

It is essential that Grid25 [...]is taken forward on the basis of the best available knowledge and informed engagement on the impacts and costs of different engineering solutions.

State Companies are required to address and mitigate, as necessary, human environmental and landscape impact in delivering the best possible engineering solutions.

 Roinn Cumarsáide, Fianáinín agus Acmhainní Náisiúnta  
Department of Communications, Energy and Natural Resources  
[www.eirgrid.ie](http://www.eirgrid.ie)



# Summary

- A lot achieved, but a lot to do
- EirGrid is committed to achieve and maintain best practice in delivering the transmission system which the Island of Ireland needs for economic recovery and social wellbeing in the years and decades to come
- Particular focus in the coming year on:
  - Cost effectiveness – right investments, right solutions, at the right time
  - Public consultation
  - Community Gain
  - Engagement on technology options – making it accessible