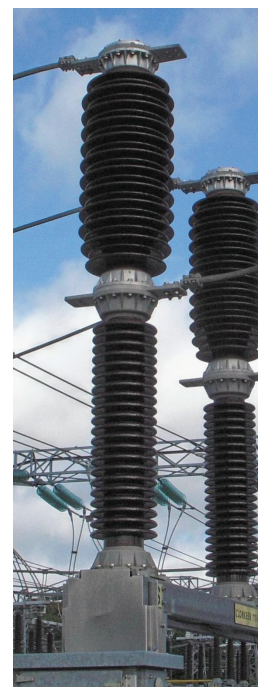


Appendix D. Phase One Map Register and Mapping



Millstreet Project

Phase One - Map Register and Mapping

November 2010
EirGrid plc



Millstreet Project

Phase One - Map Register and Mapping

November 2010

EirGrid plc

The Oval, 160 Shelbourne Road, Dublin 4

Issue and revision record

	Date	Originator	Checker	Approver	Description
A	22 nd October 2010	D Hassett	P Kelly	Tom Keane	Draft for Comment
B	15 th November 2010	D Hassett	P Kelly	Tom Keane	Final Issue

This document has been prepared for the titled project or named part thereof and should not be relied upon or used for any other project without an independent check being carried out as to its suitability and prior written authority of Mott MacDonald being obtained. Mott MacDonald accepts no responsibility or liability for the consequence of this document being used for a purpose other than the purposes for which it was commissioned. Any person using or relying on the document for such other purpose agrees, and will by such use or reliance be taken to confirm his agreement to indemnify Mott MacDonald for all loss or damage resulting therefrom.

Mott MacDonald accepts no responsibility or liability for this document to any party other than the person by whom it was commissioned.

To the extent that this report is based on information supplied by other parties, Mott MacDonald accepts no liability for any loss or damage suffered by the client, whether contractual or tortious, stemming from any conclusions based on data supplied by parties other than Mott MacDonald and used by Mott MacDonald in preparing this report.

Content

Chapter	Title	Page
1.	Map Register	1
1.1	Introductions	1
1.2	Public Open Days	1
1.2.1	Open Day 1	1
1.2.2	Open Day 2	1
1.3	Phase One Lead Consultants Site and Corridor Identification Report	1
Appendices		3
Appendix A. Open Day 1		4
Appendix B. Open Day 2		5

1. Map Register

1.1 Introductions

This report is an Appendix Report (Appendix D) to the *Phase One Lead Consultant's Site and Corridor Identification Report* for a proposed 220/110 kV substation and associated transmission infrastructure near Millstreet, County Cork and presents a register of maps used in this phase of the Project Roadmap.

1.2 Public Open Days

1.2.1 Open Day 1

A map illustrating the key constraints associated with the preliminary study area was presented at the Public Open Days held at the Castle Hotel in Macroom on Tuesday 29th June 2010 between 3.00pm and 8.00pm and Wednesday 30th June 2010 between 11.00am and 8.00pm. In addition, representative images of Air Insulated Switchgear (AIS) and Gas Insulated Switchgear (GIS) substations were presented. Copies of these images are included in Appendix A of this report.

1.2.2 Open Day 2

The following maps were presented at the second Public Open Day held at the Wallis Arms Hotel in Millstreet on 15th September between 1.00pm and 8.00pm:

Table 1.1: Open Day 2

Drawing Number	Title
MMD-261715-N-MI-0011-P1	Millstreet Project
MMD-261715-N-MI-0013-P1	Millstreet Project - Ecological Constraints (High Level)
MMD-261715-N-MI-0012-P1	Millstreet Project - Residential Amenity and Visual Impact Constraints
MMD-261715-N-MI-0014-P1	Millstreet Project - Ecological Constraints (High Level)
MMD-261715-N-MI-0015-P1	Millstreet Project - Cultural Heritage Constraints
MMD-261715-N-MI-0016-P1	Millstreet Project - Ecological Constraints
MMD-261715-N-MI-0017-P1	Millstreet Project - Preferred Substation Location & Route Corridor Options

Copies of these maps are included in Appendix B of this report.

In addition, to the images of AIS and GIS substations presented in Appendix A, images of 220 kV single circuit and 220 kV double circuit towers, as presented in Appendix B, were also on view on 15th September 2010.

1.3 Phase One Lead Consultants Site and Corridor Identification Report

The following figures are presented in the *Phase One Lead Consultant's Site and Corridor Identification Report*.

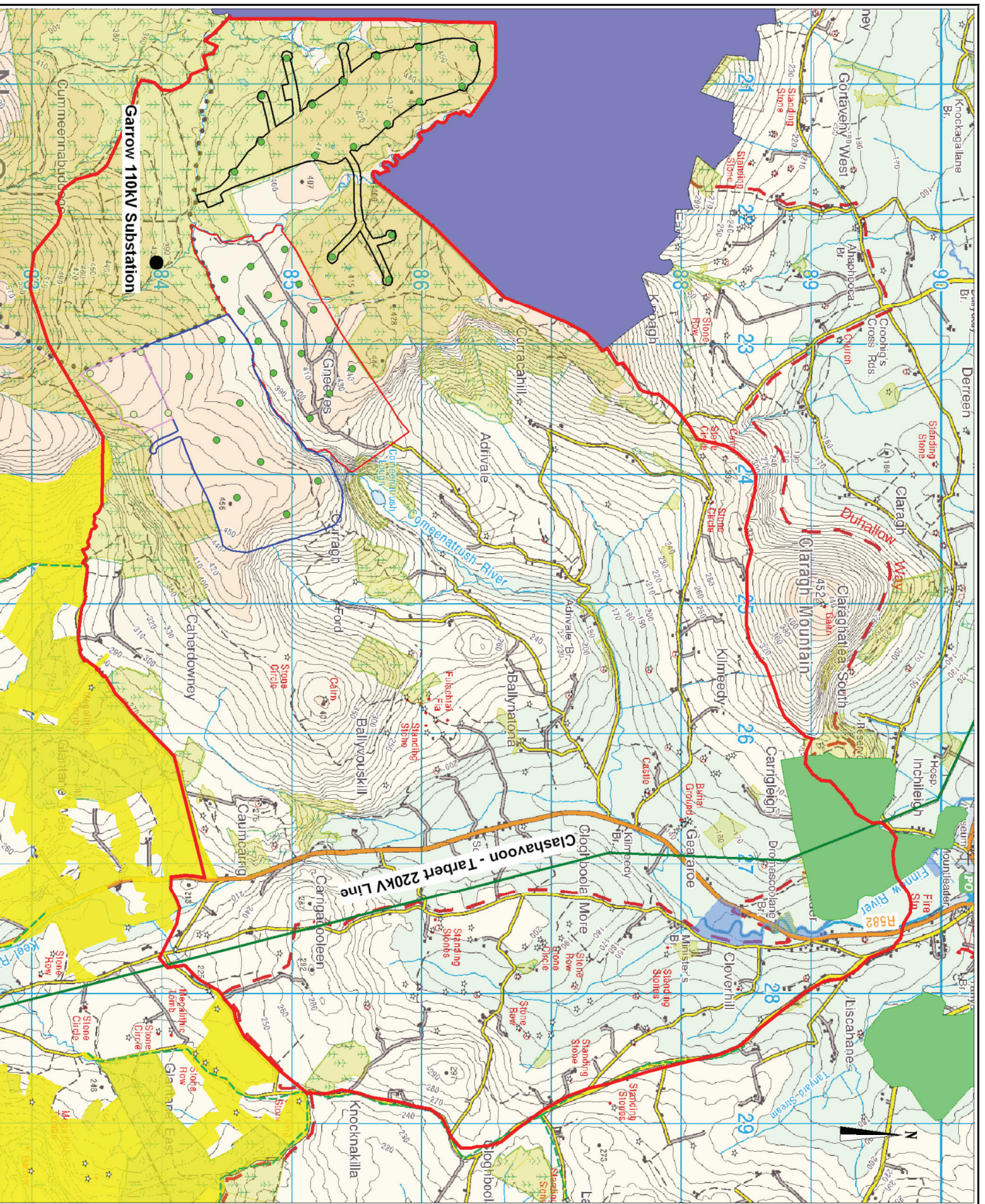
Table 1.2: Phase One Report Figures

Drawing Number	Figure Number	Title
MMD-261715-N-MI-001	Figure 1.1	Millstreet Project
MMD-261715-N-MI-002	Figure 2.1	Preliminary Constraints Map
MMD-261715-N-MI-003	Figure 2.2	Millstreet Constraints Map
MMD-261715-N-MI-004	Figure 3.1	Substation Site Selection
MMD-261715-N-MI-005	Figure 3.2	Route Corridor Selection
MMD-261715-N-MI-006	Figure 4.1	Substation Site Environmental Constraints
MMD-261715-N-MI-007	Figure 5.1	Route Corridor Environmental Constraints
MMD-261715-N-MI-008	Figure 7.1	Emerging Preferred Substation Site and Route Corridor Options
MMD-261715-N-MI-009	Figure 7.2	Emerging Preferred Substation Site and Route Corridors
MMD-261715-N-MI-018	Figure B.1	Millstreet Constraints Map
MMD-261715-N-MI-019	Figure B.2	Millstreet Constraints Map – Cultural Heritage Constraints
MMD-261715-N-MI-020	Figure B.3	Millstreet Constraints Map – Ecological Constraints

Appendices

Appendix A. Open Day 1	4
Appendix B. Open Day 2	5

Appendix A. Open Day 1



Notes

Key to symbols

- Study Area
- Existing Clashavoon Tabert 220kV Line
- Existing Garrow 110kV Substation
- ▭ Designated Scenic Landscape
- ▭ Foresty
- Scenic Route
- ★ Archaeological Sites
- ▭ NHA (Natural Heritage Area)
- ▭ SPA (Special Protected Area)
- ▭ SAC (Special Area of Conservation)
- ▭ SAC/NHA Overlapping
- Point
- Carradowney Windfarm (Permitted)
- Point
- Curragh Windfarm (Constructed)
- Point
- Gnaevs Windfarm (Constructed)
- Point
- Coomachoe Windfarm (Constructed)

AI	Z2006/10	RH	Fee Display	DR	PK
Rev	Date	Drawn	Description	CHK'd	App'd

Mott MacDonald

115, O'Connell's Road,
 Rockwell, Dunelm
 Dublin 15
 +353 (0) 20451000
 www.mottmac.com

EIRGRID

115, O'Connell's Road,
 Rockwell, Dunelm
 Dublin 15
 www.eirgrid.com

Client: Millstreet Constraints Map

Drawn	CHK'd	App'd	Rev
DESIGNED	CHK'd	App'd	A1

Scale at A1: NTS

Drawing Number: A1

This document should not be used or relied on to construct or alter any structure for which a licence is required from the Commission for the Regulation of Utilities (CRU). The Commission for the Regulation of Utilities (CRU) is not responsible for the accuracy or completeness of the information contained in this document. The Commission for the Regulation of Utilities (CRU) is not responsible for the accuracy or completeness of the information contained in this document.

© EirGrid 2010

**Clashavoon 220KV Substation –
Air Insulated Switchgear (AIS)**



Pottery Road 110kV Substation –
Gas Insulated Switchgear (GIS)



Appendix B. Open Day 2

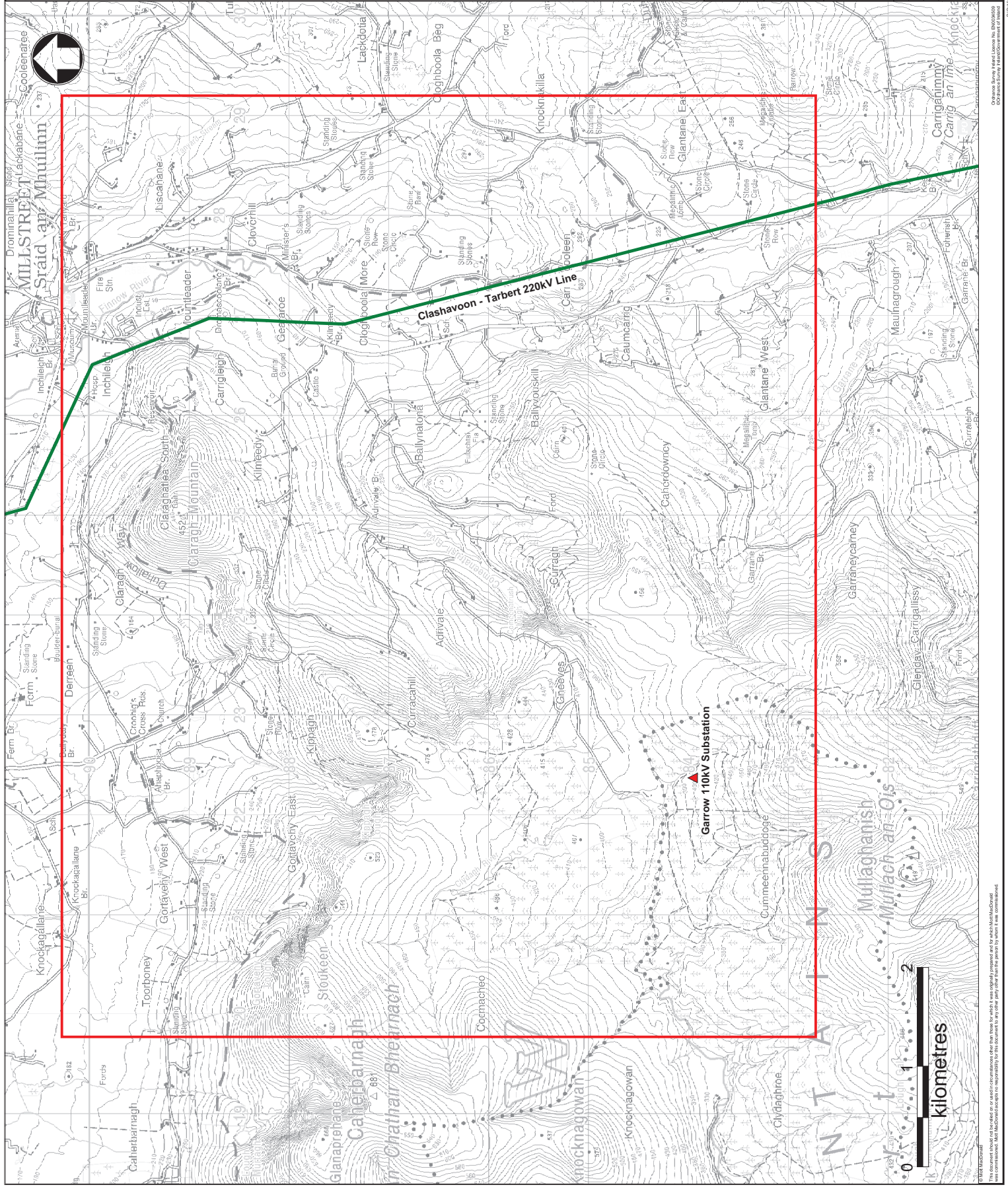
LEGEND
 Existing Garrow
 110kV Substation
 Existing Clashavoon - Tarbert
 220kV Line

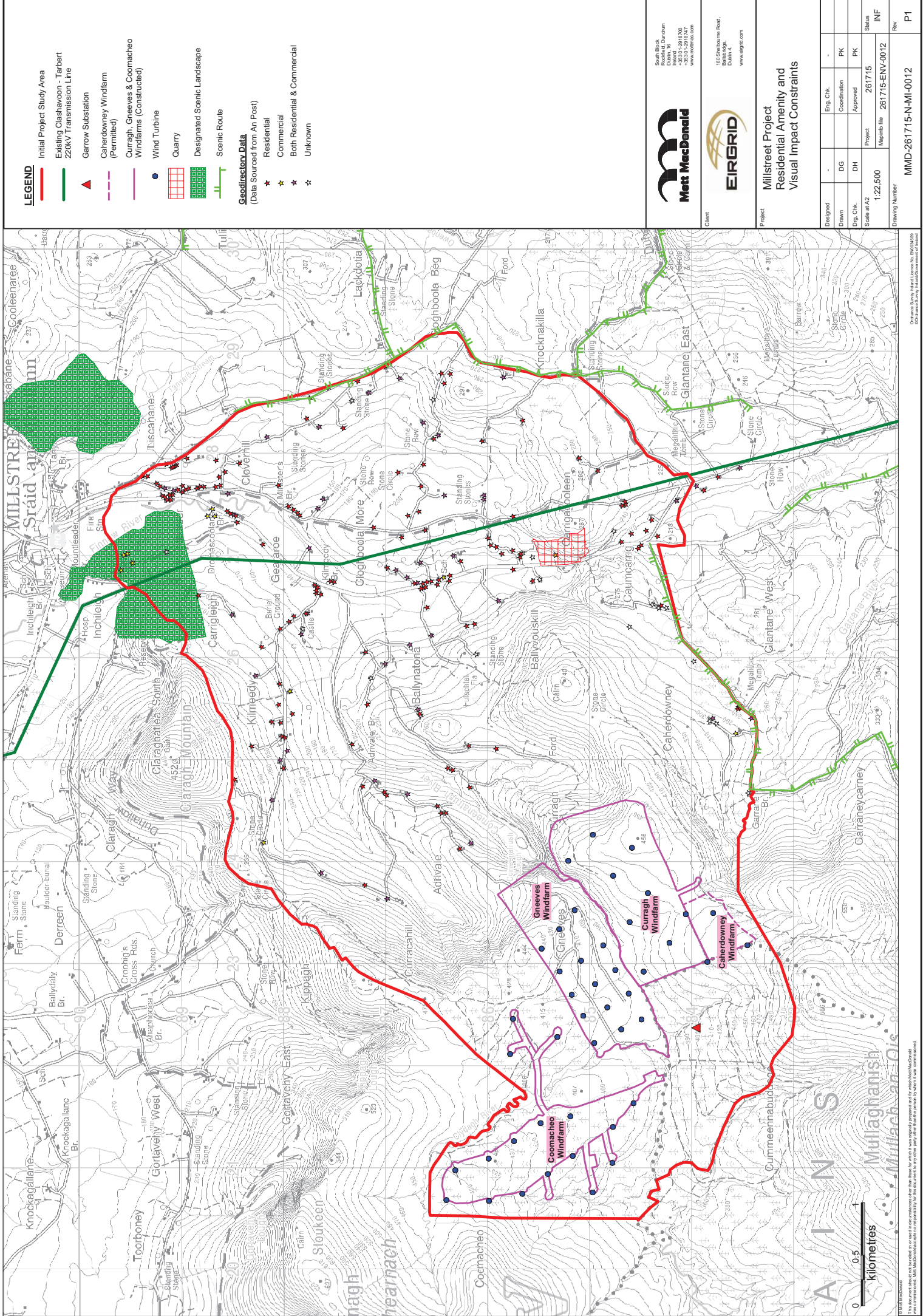
Mott MacDonald
 160 Shelburne Road,
 Dublin 16
 +353 01 29 19 000
 +353 01 29 19 000
 www.mottmac.com

EIRGRID
 160 Shelburne Road,
 Dublin 16
 www.eirgrid.com

Project: Millstreet Project

Designed	Eng. Chk.	-
Drawn	DG	PK
Eng. Chk.	DH	PK
Scale at A2	Project	261715
1:25,000	Mapinfo file	261715-ENV-0011
Drawing Number	Rev	P1





LEGEND

- Initial Project Study Area
- Existing Clashavoon - Tarbert 220KV Transmission Line
- Garrow Substation
- Cahardowney Windfarm (Permitted)
- Curragh, Gneeves & Coomacheo Windfarms (Constructed)
- Wind Turbine
- Quarry
- Designated Scenic Landscape
- Scenic Route

Geodirectory Data
(Data Sourced from An Post)

- Residential
- Commercial
- Both Residential & Commercial
- Unknown

Mott MacDonald

160 Shelburne Road,
Dublin 16
+353 (0) 29 19 000
+353 (0) 29 19 000
www.mottmac.com

EIRGRID

160 Shelburne Road,
Dublin 16
+353 (0) 29 19 000
www.eirgrid.com

Millstreet Project
Residential Amenity and
Visual Impact Constraints

Designed	Eng. Chk.	-
Drawn	DG	Coordination
Eng. Chk.	DH	Approved
Scale at A3	1:22,500	Project
		Mapinfo file
		261715
		261715-ENV-0012
Drawing Number		Rev
		P1

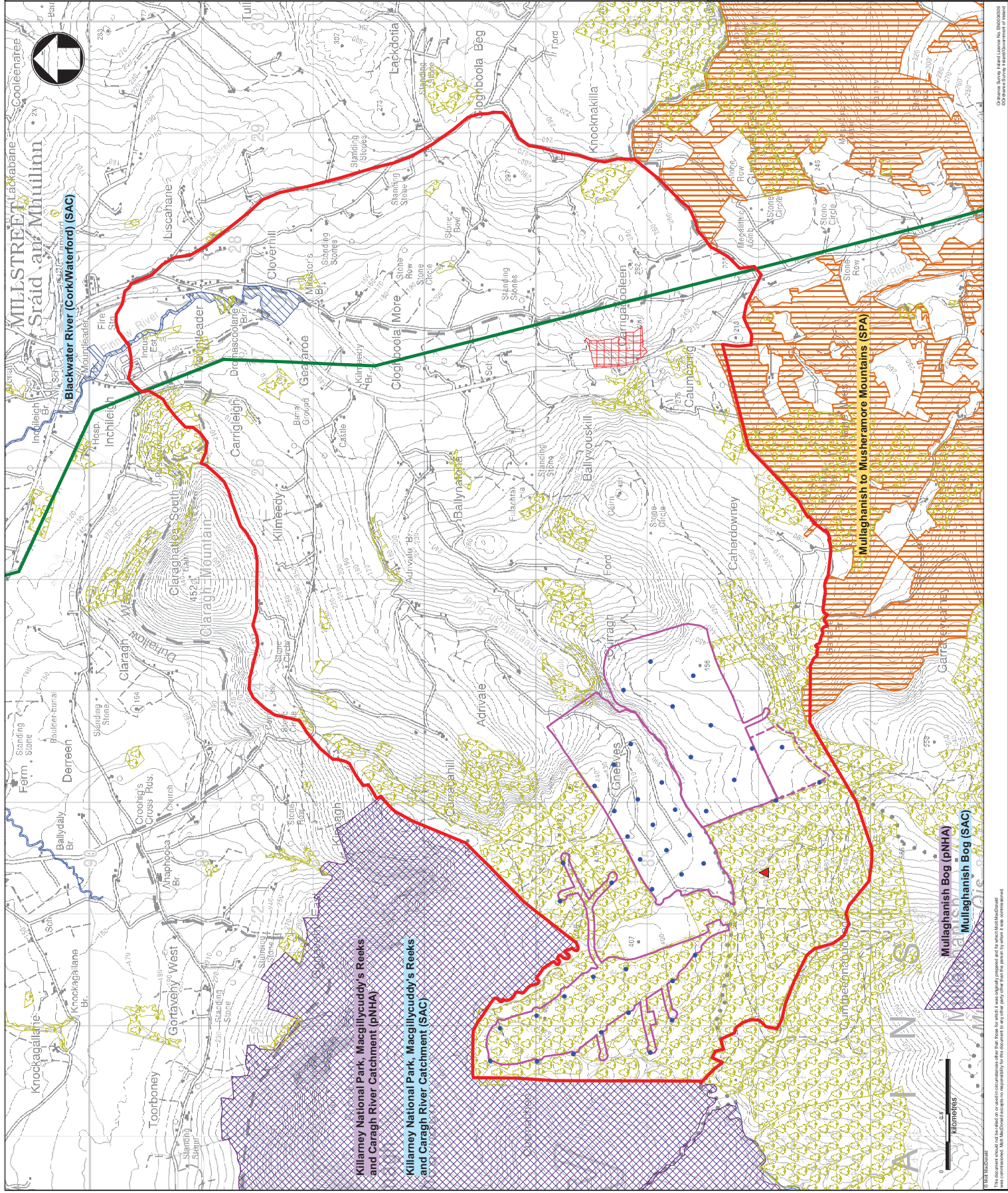
LEGEND

- Initial Project Study Area
- Existing Clachavoon - Tarbert 220kV Transmission Line
- Garrow Substation
- Cahardowney Windfarm (Permitted)
- Curragh, Greeves & Coomachtoe Windfarms (Constructed)
- Wind Turbine

- Quarry
- Forestry

Environmental Designations

- NHA/pNHA
- SPA
- SAC



Mett MacDonald
160 Shelburne Road,
Dublin 16
+353 01 29 18 000
+353 01 29 18 000
www.mettmacdonald.com

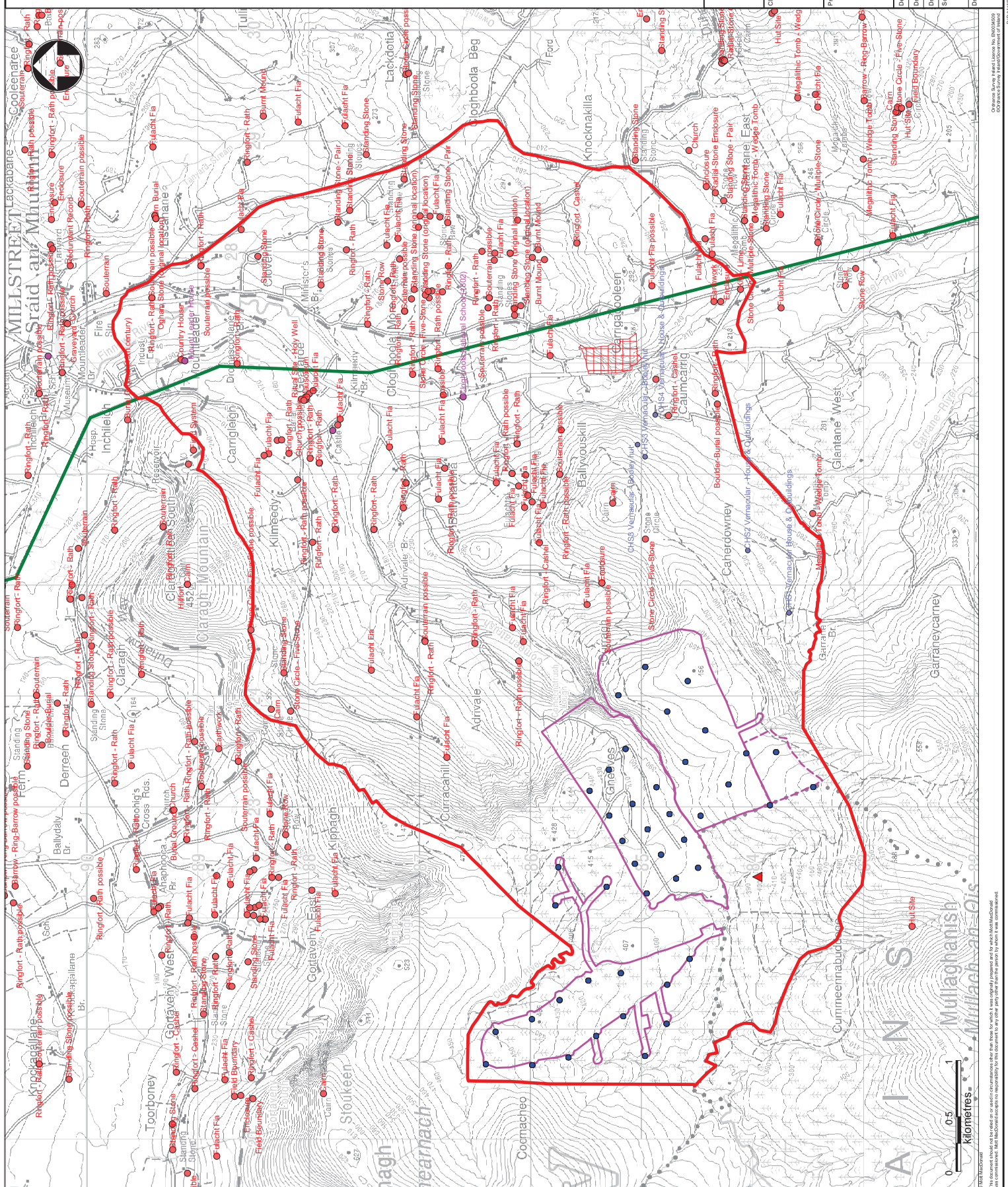
EIRGRID
160 Shelburne Road,
Dublin 16
+353 01 29 18 000
www.eirgrid.com

Client
Project
Millstreet Project
Ecological Constraints (High Level)

Designed	Eng. Chk.	Coordination	PK
Drawn	DG	DH	PK
Eng. Chk.	DH	Approved	PK
Scale at A3	1:22,500	Project	261715
Mapinfo file	261715-ENV-0013	Status	INF
Drawing Number	MMD-261715-N-MI-0013	Rev	P1

LEGEND

- Initial Project Study Area
- Existing Clashawon - Tarbert 220KV Transmission Line
- Garrow Substation
- Cahersweeney Windfarm (Permitted)
- Curragh, Gneaves & Coomacheo Windfarms (Constructed)
- Wind Turbine
- Quarry
- National Monuments
- Record of Monuments & Places
- Record of Protected Structures
- Other Cultural Heritage Sites



Mott MacDonald

160 Shelburne Road,
Dunmurry, Dundrum,
Dublin 16
+353 (0) 1 29 19 000
+353 (0) 1 29 19 000
www.mottmac.com

EIRGRID

160 Shelburne Road,
Dunmurry, Dundrum,
Dublin 16
www.eirgrid.com

Client

160 Shelburne Road,
Dunmurry, Dundrum,
Dublin 16
www.eirgrid.com

Project

Millstreet Project
Cultural Heritage Constraints

Drawn	DG	Coordination	PK
Checked	DH	Approved	PK
Scale at A3	1:22,500	Project	261715
Scale at A2	1:22,500	Mapinfo file	261715-ENV-0014
Drawing Number		Status	INF
		Rev	P1

© 2014 Mott MacDonald. All rights reserved. This document is the property of Mott MacDonald and is not to be distributed, copied, or reproduced in any form without the prior written consent of Mott MacDonald. The information contained herein is for general information only and does not constitute an offer of any financial product or service. The information contained herein is for general information only and does not constitute an offer of any financial product or service.

LEGEND

- Revised Project Study Area
- Garrow Substation
- Existing Clashawon - Tarbert 220kV Transmission Line

Environmental Designations

- NHAP/NHA
- SPA
- SAC
- Cultural Heritage Sites
- Designated Scenic Landscape
- Scenic Route
- Forestry

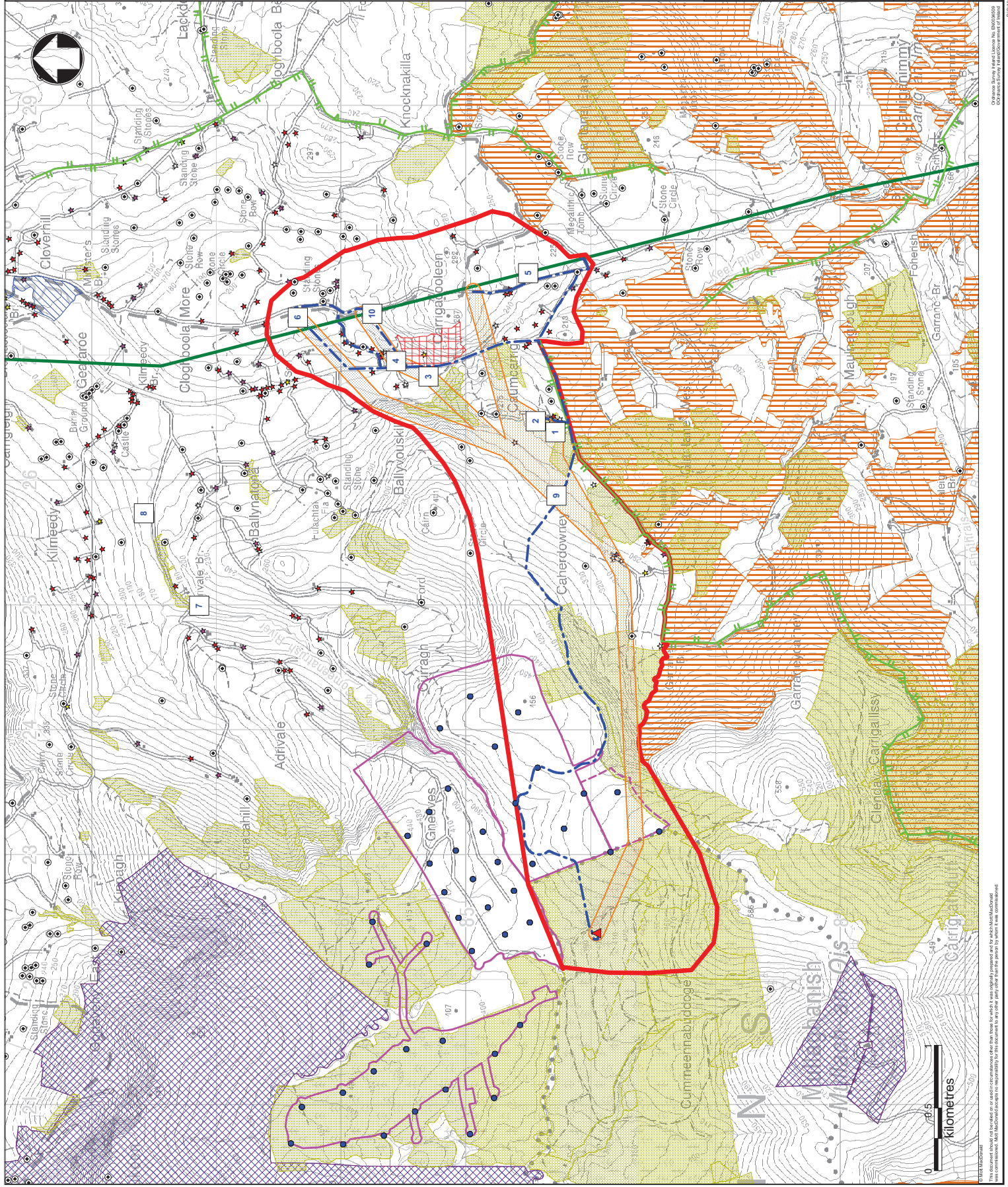
Geodirectory Data
(Data Sourced from An Post)

- Residential
- Commercial
- Both Residential & Commercial
- Unknown
- Quarry
- Caherdowney Windfarm (Permitted)
- Curragh, Gneaves & Coomachao Windfarms (Constructed)
- Wind Turbine
- 110 kV & 220 kV Underground Cable Route
- 110 kV & 220 kV Overhead Line Corridors
- Potential Substation Site

Client
160 Shaesbourne Road, Dublin 4, www.eirgrid.com

Project
Millstreet Project Constraints Map

Designed	Eng. Chk.	-
Drawn	DG	Coordination
Eng. Chk.	DH	Approved
Scale at A3	Project	Status
1:20,000	Mapinfo file	261715-ENV-0016
Drawing Number		INF
		Rev
		P1



Mott MacDonald
 160 Shaesbourne Road, Dublin 4, Ireland
 +353 (0) 1 29 19 100
 +353 (0) 1 29 19 101
 www.mottmacdonald.com

Client
 160 Shaesbourne Road, Dublin 4, Ireland
 www.eirgrid.com

Project
 Millstreet Project Constraints Map

Designed	Eng. Chk.	-
Drawn	DG	Coordination
Eng. Chk.	DH	Approved
Scale at A3	Project	Status
1:20,000	Mapinfo file	261715-ENV-0016
Drawing Number		INF
		Rev
		P1

This document should not be relied on or used in circumstances other than those for which it was originally prepared and for which it has been authorised. It is the responsibility of the client to ensure that the information contained herein is accurate and up to date. The client is responsible for ensuring that the information contained herein is accurate and up to date.

LEGEND

- Revised Project Study Area
- Preferred Substation Site

Preferred Underground Cable Route

- 110kV Underground Cable
- 220kV Underground Cable

Preferred Overhead Line Route Corridor

- 110kV Overhead Line
- 220kV Overhead Line

Existing Garrow

110kV Substation

Existing Clashavoon - Tarbert

220kV Transmission Line

160 Shelburne Road,
Bundick, Dunam,
Dublin, IR
+353 01 29 01 900
+353 01 29 01 900
www.eirgrid.com

Mott MacDonald

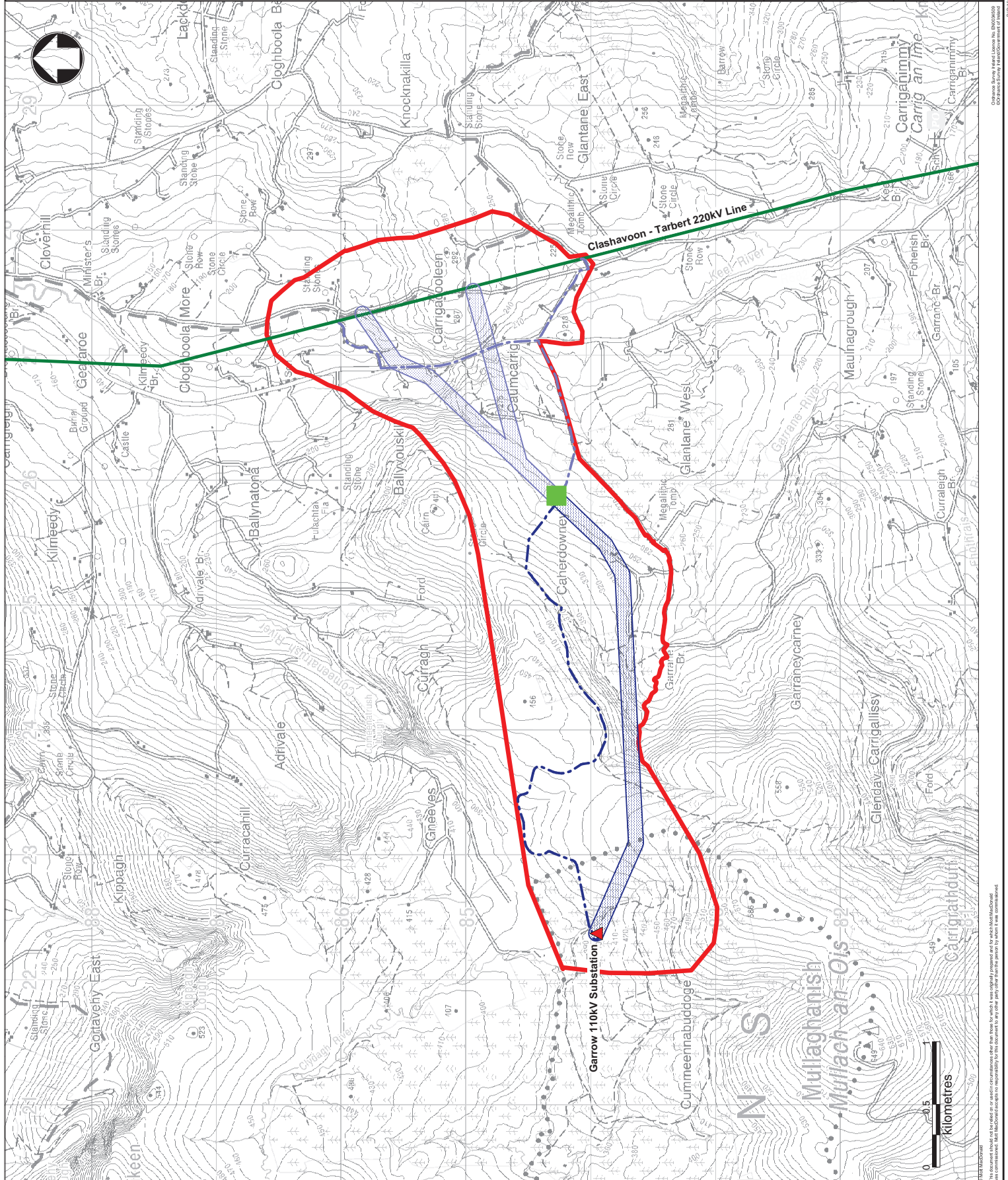
160 Shelburne Road,
Bundick, Dunam,
Dublin, IR
+353 01 29 01 900
+353 01 29 01 900
www.eirgrid.com

EIRGRID

Millstreet Project

**Preferred Substation Location
& Route Corridor Options**

Designed	Eng. Chk.	-
Drawn	DG	PK
Eng. Chk.	DH	PK
Scale at A3	Project	261715
Scale at A2	Maginfo file	261715-ENV-0017
1:20,000	INF	
Drawing Number	Rev	
		P1



Ordnance Survey Field Licence No. EN000009
 Ordnance Survey map data copyright © Crown Copyright and/or the Ordnance Survey. All rights reserved.

