

Appendix A : Project Documents and Reference (Appendices 1 to 9)

1	Newspaper Notice	39
2	EirGrid Project Briefing Document	41
3	Project Website	47
4	Letter from the Department of Arts, Heritage and Gaeltacht	48
5	Landscape constraints map	51
6	Survey Notice, Sample Cover letter	52
7	EirGrid booklet on EMF	59
8	ESB/IFA code of practice	60
9	Indicative Overhead Line Routes	61

North Kerry Project

EirGrid is the state-owned, independent electricity Transmission System Operator and Market Operator in Ireland. It is EirGrid's role to develop quality connection, transmission and market services to electricity generators, suppliers and customers utilising the high-voltage electricity system.

In this capacity, it is proposing a new reinforcement scheme, the **North Kerry Project**.

This comprises of a new 220kV electricity substation which is required to the east of Listowel. The new substation will connect into the existing 220kV transmission line which runs from Tarbert in Co. Kerry to Clashavoon in Co. Cork. It will also connect into the existing 110kV transmission lines which run from Tarbert to Trien in Co. Kerry and from Trien to Dromada in Co. Limerick.

In addition a new 110kV circuit is required to connect the planned Cloghboola 110kV electricity substation (near Knocknagashel) to either Trien 110kV substation or the proposed new 220kV electricity substation in North Kerry.

Further information about the proposed infrastructure is available on www.eirgridprojects.com.

The first phase of public consultation for this proposed reinforcement scheme took place on Thursday 2nd September 2010 in Kirby's Lanterns Hotel in Tarbert. Since then, potential sites for the new 220kV electricity substation and potential route corridors for the new 110kV circuit have been identified. An emerging preferred solution for the site and route corridor has been identified by consultants.

Members of the public are now invited to the second EirGrid information day which will be held in the Duagh Family and Community Resource Centre on Friday May 27th between 12.30pm and 7.30pm.

There, you can view the potential and emerging preferred sites and route corridors and can provide submissions, comments, information or submit queries in relation to the proposed developments.

Closing date for submissions is 17 June 2011 at 5.00pm. Feedback regarding the project can be submitted by email, letter or telephone as detailed below.

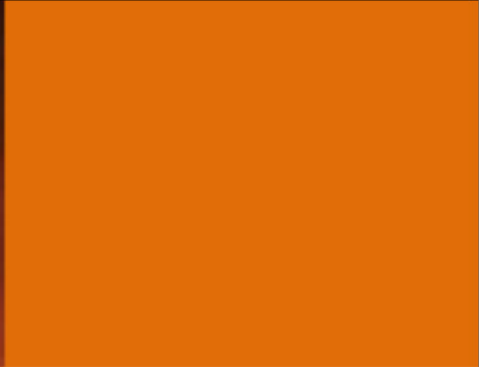
EirGrid is committed to ensuring that all work will be undertaken in a safe and environmentally responsible manner and in co-operation with the local community.

Feedback regarding this project can be submitted by email, letter or telephone as detailed below:

Contact address: **North Kerry Project Manager**,
EirGrid, The Oval, 160 Shelbourne Road, Ballsbridge, Dublin 4.
Telephone: 01 702 6642
Email North Kerry Project: northkerryproject@eirgrid.com
Web: www.eirgridprojects.com



Appendix 1. Newspaper Notice



NORTH KERRY PROJECT
In the vicinity of Duagh,
Knocknagashel and Lyracrumpane



GRID25
DELIVERING IRELAND'S ELECTRICITY FUTURE

Phase 1
Public Consultation

Appendix 2. (EirGrid Project Briefing Document. Page 1 of 8.)



NORTH KERRY PROJECT

Who is EirGrid?

EirGrid, a state-owned company, is the national operator of the electricity grid.

The national grid is an interconnected network of high voltage power lines and cables, the equivalent of the main roads, dual carriageways and motorways of the road network.

EirGrid's role is to operate, plan and develop the grid, to provide customers throughout the country - from rural and urban areas, to homes, farms, businesses and sports fields - with a safe, secure, reliable and efficient electricity supply.

In particular, development of the grid is essential to provide a platform for renewed economic growth and regional development, and is vital if we are to effectively tap into our abundant renewable resources.

What is Grid25?

Grid25 is a major initiative to put in place a safe, secure and affordable electricity supply throughout Ireland, supporting economic growth and utilising our renewable energy resource to its maximum potential.

Grid25 will involve upgrading the high voltage system and an overall investment of approximately €4 billion to the period 2025. This new infrastructure is every bit as essential to the future growth of the country as any investment in road, rail and broadband.

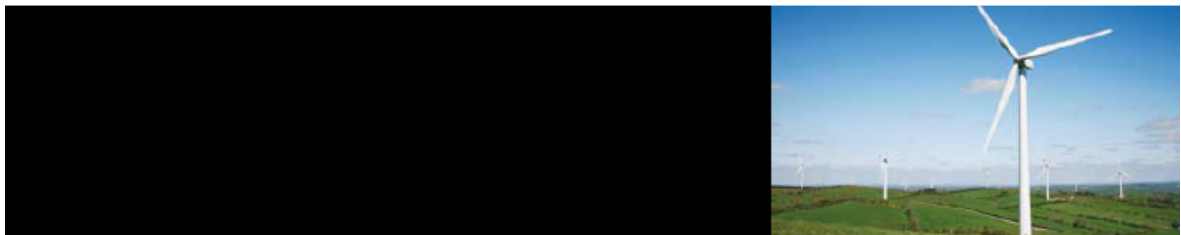
Under Grid25, approximately €730 million will be invested in the development of the energy transmission infrastructure for the South-West region.

What is required?

- A new 220/110 kV substation is required in North Kerry to the east of Listowel. This substation will connect into the existing 220 kV transmission line which runs from the Tarbert substation in Co. Kerry to the Clashavoon substation in Co. Cork. It will also connect into the existing 110 kV transmission lines which run from Tarbert to Trien in Co. Kerry and from Trien to Dromada in Co. Limerick.
- In addition a new 110 kV circuit is required to connect the planned Cloghboola 110 kV electricity substation to either Trien 110 kV substation or the proposed new 220/110 kV substation. A reconfiguration of Trien 110 kV substation is also required.

Where is the project located?

A wide study area has been identified and examined. The project is in the area east of Listowel and in the vicinity of Duagh, Knocknagashel and Lyracrumpane. The townlands include: Ardydonagan, Bunglasha, Carhoearagh, Cloghboola, Derrindaff, Glashananoon, Kilmeany, Kilmorna, Knockaunbrack, Lacka East (E.D. Kilmeany), Lacka West, Muingwee, Patch, Shronebeirne, Toor, Trien, Trienearagh.



Appendix 2. (EirGrid Project Briefing Document. Page 2 of 8.)



What is the purpose of this briefing document?

The purpose of this document is to present an overview of the project and also to summarise the key findings of our studies to date. These findings will be presented in a more extensive document the 'Phase 1 Lead Consultant's Report'*

This will be available online in June 2011 at: www.eirgridprojects.com

The findings of this Phase 1 Report are the emerging preferred recommendations of the Lead Consultants. Publication of this report will be followed by a consultation period during which you are encouraged to give us your views on the key recommendations and findings listed below:

- The emerging preferred location for the 220/110 kV substation is identified. It is located in the vicinity of Kilmorna close to the intersection of the existing Clashavoon – Tarbert 220 kV overhead line and existing Dromada – Trien 110 kV overhead lines.

For further information or for an explanation of any terms used in this document please see the FAQ page on our project website or alternatively contact us using the contact details provided on the back page of this document.

** The process from project initiation through to lodgement of planning application and subsequent construction has been divided into 5 phases or stages (see Project Roadmap in this brochure).*



Appendix 2. (EirGrid Project Briefing Document. Page 3 of 8.)

Planning Application Key Phases

STAGE 1

Project Development & Consultation Road Map

You are Here



Appendix 2. (EirGrid Project Briefing Document. Page 4 of 8.)

Your Views are Important to Us

We welcome all suggestions and queries. Please study the map on the next page and tell us your views on the emerging preferred 220/110 kV substation site and 110 kV circuit route corridor.

How was the emerging preferred solution determined?

Several key criteria and inputs were taken into account by the consultants:

Visual Impact: An assessment of the visual impact of the proposal on the environment was carried out in order to minimise the impact.

Community: An assessment of the local villages and communities was undertaken to reduce the proximity of the proposed infrastructure and ensure minimal impact on lifestyles of those living and working in nearby communities.

Ecology: A review of conservation designated areas, including Special Areas of Conservation (SACs), Special Protection Area (SPAs) and Natural Heritage Areas (NHAs) was completed.

Cultural Heritage: Architectural and archaeological heritage sites, including recorded archaeological monuments and places, protected structures, and national monuments, were assessed in an attempt to minimise any impact.

Landscape: A review of County Development Plans was undertaken in order to assess the numbers of scenic views, scenic routes, and vulnerable landscapes in the area.

Geology: Soil, subsoil and bedrock data was used to characterise & determine geology constraints.

Water: The surface water features were reviewed and river crossings minimised.

Public Consultation: The identification of constraints also included consultation with statutory and non-statutory consultees as well as the general public.

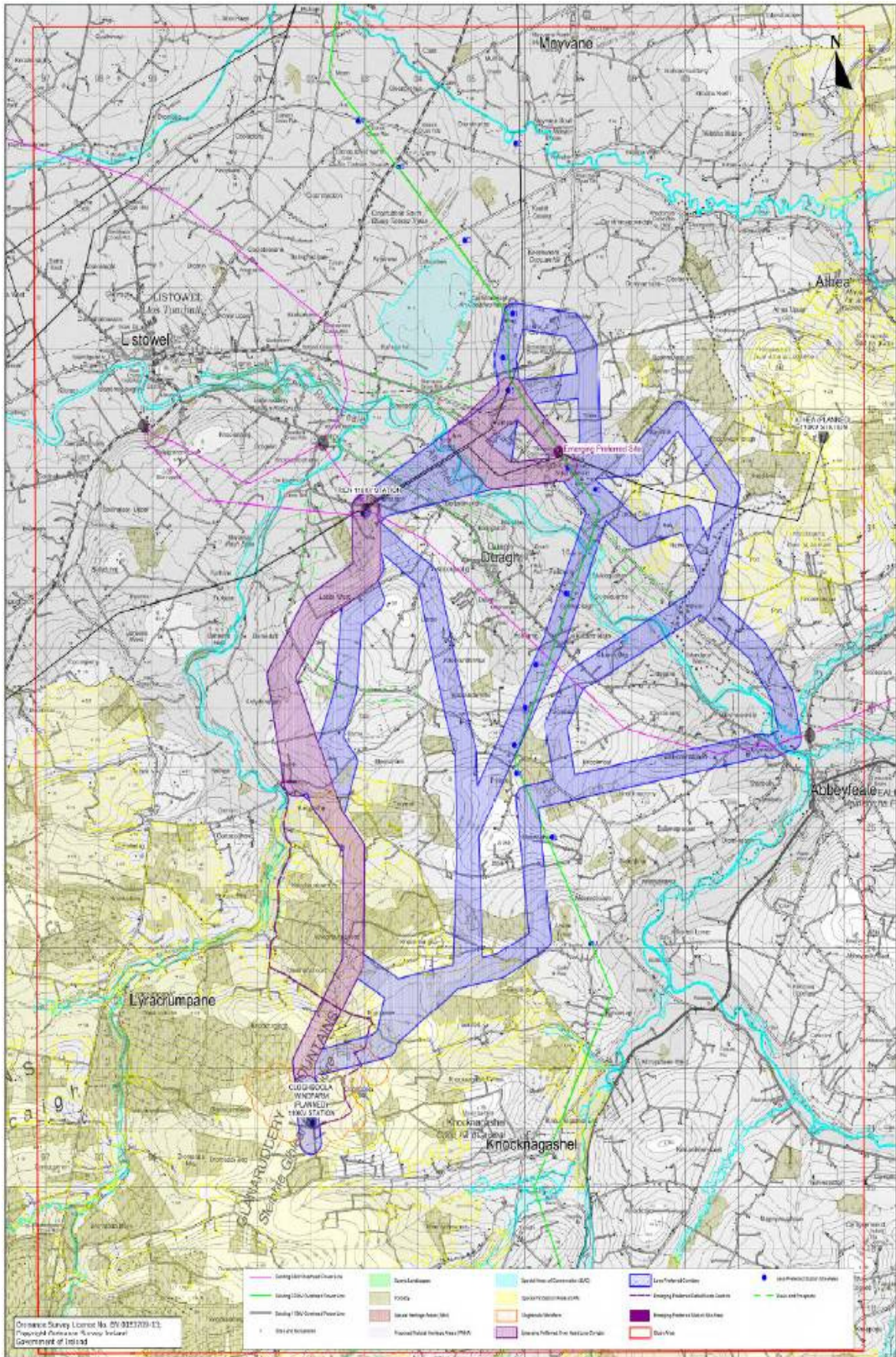
Aerial Photography: Aerial photography for the study area was obtained. This aerial photography was used as a basis for the constraints mapping and was in itself used as a means of identifying project constraints.

OSI Mapping: OSI Mapping under licence was obtained and used to identify possible constraints.

An Post Geodirectory: The An Post GeoDirectory identifies the precise address and location of residential and commercial property in Ireland. Information was obtained and mapped along with ongoing reviews of publically available data from Kerry County Council.

Local History: The study area is particularly interesting in regard to Irish History and every effort has been made to identify and give due recognition and protection to any sites discovered.

Site Visits: Frequent site visits were made by the project team to get a full appreciation of all identified constraints and the general appreciation of the topography/landscape of the study area.



Appendix 2. (EirGrid Project Briefing Document. Page 6/7 of 8.)



Why is it needed?

- The new substation will allow the region to utilise its abundant renewable energy resources.
- The existing network will not be able to accommodate the planned amount of wind generation planned for the area.
- It will allow for future growth in demand from both industry and domestic users.
- It will increase security of electricity supply for the entire County Kerry.
- The development of the renewable energy sector is an important element in driving future job creation and is a key platform for economic recovery.

Timing

- The new substation is required to be fully operational by 2014.
- A planning application is expected to be lodged with An Bord Pleanála in 2011.
- Full public consultation will take place over the coming months.

Thank you for taking the time to read this brochure.

Contact Us

Tel: 01 702 6642
Email: northkerryproject@eirgrid.com
Web: www.eirgridprojects.com



www.eirgridprojects.com



Project Activity

Steps of the Proposed Project

The process for submitting a planning application for the proposed North Kerry Project has been divided into the 5 stages, see [Project Roadmap](#)

The estimated timelines are detailed below:

Stage	Description	Status
Stage 1	Information Gathering	Complete
Stage 2	Evaluate Options	Estimated October/November 2011
Stage 3	Confirm Design	Estimated End November 2011
Stage 4	Prepare Planning Application	Estimated Quarter 1 2012
Stage 5	Planning Granted/Construction	Estimated 2012 to 2014

October 2011 - Stage 1 Report Published

Following the Information day on May 27th and the subsequent consultation and engagement period, the Stage 1 Consultants Constraints Report which identifies the emerging preferred recommendations has now been published. You can download a copy here: [Stage 1 Consultants Constraints Report](#) and [Stage 1 Consultants Constraints Report Appendices](#)

We have now moved into Stage 2 of the project roadmap. A Stage 2 report which will outline the preferred route corridor and the indicative circuit routes will be published in the coming weeks.

May 2011

We are inviting members of the public to attend a second public information day on the proposed new electricity reinforcement scheme, the North Kerry Project.

The information day will be held in the **Duagh Family and Community Resource Centre on Friday May 27th between 12.30pm and 7.30pm.**



Project Manager

North Kerry Project Manager
EirGrid Plc
The Oval
160 Shelbourne Road
Ballsbridge
Dublin 4

Email
northkerryproject@eirgrid.com
Telephone: 01 702 6642

Maps:

[North Kerry Project Map](#)

[Route Corridor and Site Options](#)



Videos:

Related Documents:

[North Kerry Initial Briefing Document](#)

[Phase 1 Briefing Document](#)

Archive:

Appendix 3. Project Website (www.eirgridprojects.com/projects/northkerryproject)



An Roinn
Ealaíon, Oidhreachta agus Gaeltachta
Department of
Arts, Heritage and the Gaeltacht

17th November 2011

Your Ref: North Kerry project
Our Ref: DAU-2011-KY-CON-G2010/463

Brendan Kearney,
Project Manager,
North Kerry Project,
Eirgrid plc,
The Oval,
160 Shelbourne Road,
Ballsbridge,
Dublin 4

Re: G2010/463: Proposed North Kerry powerline

A Chara,

We refer to your e-mail of 16 June 2011 to the NPWS regional ecologist re the above. In response to your query in that e-mail, the Department confirms that the position re the East Kerry – NW Cork powerline is similar to that for the above proposal, as outlined as follows.

Please note that these comments are without prejudice to any recommendations, decisions or actions by the Minister for Arts, Heritage and the Gaeltacht relating to this planning application or to further pre-planning consultations.

Special Protection Area

Part of the proposed emerging preferred route of the 110kV circuit, from the Cloghboola wind farm to the Trien 110kV station, includes part of the Stacks to Mullaghareirk Mountains, West Limerick Hills and Mount Eagle candidate Special Protection Area (cSPA) (4161), notified for designation in November 2007. The conservation objectives of the site are for the conservation of the hen harrier, a species listed in Annex I of the EU Birds Directive (Council Directive 2009/147/EU).

The hen harrier is listed as a bird species threatened by electrocution (NABU, 2006¹) and a Habitats Directive appropriate assessment of the effects of the proposed project on the Special Protection Area will be necessary if an aboveground power-line is proposed. The appropriate assessment must assess collision risk (especially during the breeding season) and risk of electrocution, as well as indirect effects such as providing viewing perches for nest predators such as hooded crows. A detailed vantage point survey of breeding harriers within 500m of the power-line will be required to

¹ NABU (2006) *Suggested practices for bird protection on power lines*. NABU – German Society for Nature Conservation. www.nabu.de/vogelschutz/caution_electrocution.pdf

assess the effects adequately. Also, the 'trap' effects of creating a felled corridor through mature forestry which could increase collision risk by concentrating dispersing harriers along the power line route should be assessed.

In combination effects of the power-line, with other plans and projects (including permitted wind farms and forestry) must be assessed. Also, the EIS will need to adequately assess the effects of the power-line on other potentially-occurring bird species which are either listed on Annex I of the Birds Directive (wintering short-eared owl and golden plover) or on the Red List of birds of conservation concern in Ireland (resident red grouse, barn owl and ring ouzel; breeding curlew), based on sufficient survey data during the appropriate season.

If it is proposed to route the circuit using underground cable, then a Habitats Directive screening report (to establish if there will be significant effects on the cSPA) will be necessary (see DEHLG (2009²)).

Special Areas of Conservation

The proposed emerging preferred route includes part of the catchment of the Lower River Shannon candidate Special Area of Conservation (cSAC) (2165). The conservation objectives of the cSAC refers to conservation of salmon, otter and brook lamprey. A Habitats Directive screening report (to establish if there will be significant effects on the cSAC) will be necessary for this site, irrespective of whether the development will be an aboveground line or a cable.

Sufficient measures (e.g. following CIRIA guidelines^{3,4,5}) should be taken during construction to avoid excessive suspended solids release, pollution due to hydrocarbons, etc., and erosion from an increased hydrographic peak due to more efficient unattenuated surface drainage from roadways and faster subsurface drainage along underground cable trenches.

Protected species

The EIS should have sufficient data to allow accurate assessment of the effects of the project on protected fauna such as bats, otter and badger.

Kindly forward any further information to the following address:

The Manager,
Development Applications Unit,
Department of Arts, Heritage and the Gaeltacht,
Newtown Road,
Wexford

Alternatively, documentation associated with the above can be referred electronically to the DAU at the following address:

manager.dau@ahg.gov.ie

Is mise le meas,

² DEHLG (2009) Appropriate assessment of plans and projects in Ireland: guidance for planning authorities. www.npws.ie/media/npws/publications/codesofpractice/AA%20Guidance%2010-12-09.pdf

³ Mumane, E., Heap, A. and Swain, A. (2006) *Control of water pollution from linear construction projects. Technical Guidance*. CIRIA C648.

⁴ Mumane, E. et al. (2006) *Control of water pollution from linear construction projects. Site guide*. CIRIA C649.

⁵ Masters-Williams, H., et al. (2001) *Control of water pollution from construction sites*. CIRIA Technical Guidance C532.



Yvonne Nolan,
Development Applications Unit
Tel: (053) 911 7382
E-mail: yvonne.nolan@ahg.gov.ie

Appendix 4. Letter from the Department of Arts, Heritage and Gaeltacht. (pg 3/3)

ESBI Engineering, Unit 6, Eastgate Avenue, Eastgate Business Park, Little Island, Co. Cork, Ireland.
Tel: +353 (0) 21 497 6300 Fax: +353 (0) 21 497 6344 Email: infocork@esbi.ie Web: www.esbi.ie

Sample
Duagh,
Listowel,
Co. Kerry.

Date: 25th October 2011

Landowner No. XX

Re: Proposed Cloghboola to Trien 110kV Line

Dear Mr.

EirGrid the Transmission System Operator for Ireland, has identified the need for electricity transmission system developments within the North Kerry region. One of the elements of the North Kerry Project is the proposal to construct a new 110kV circuit between the existing Trien 110kV substation which is located approx 3km west of Duagh and the planned Cloghboola 110kV electricity windfarm substation located near Knocknagashel.

The project is now at the landowner consultation and survey stage, this is an early and important stage in the process. It will be an opportunity for landowners to outline any concerns or suggestions for consideration before the line route and structure locations are finalised and lodged for planning approval.

ESB International has been appointed as consultants to EirGrid in relation to this development and over the coming weeks, members of the project team will visit landowners along the identified indicative route. All members of the team will carry identification.

For your information, please find enclosed the following;

- EirGrid Survey Letter
- Survey Map
- Project Briefing Document

Please direct all correspondence quoting your landowner number as follows:

By Post: Wayleave Manager North Kerry Project,
ESB International,
Unit 6 Eastgate Avenue,
Little Island, County Cork.

By e-mail: northkerryproject@eirgrid.com

By telephone: +353 (021) 497 6334

Visit the project website at: <http://www.eirgridprojects.com/projects/northkerryproject/>

Yours Sincerely,



ESBI Engineering is a trading name of ESBI Engineering & Facility Management Limited.

Directors: Oliver Brogan, John Redmond, Aisling Kennolly, Michael O'Brien.
Registered Office: Stephen Court, 18-21 St. Stephen's Green, Dublin 2, Ireland.
Registered in Ireland No. 155249



Appendix 6. Survey Notice, Sample Cover letter (Survey Notice Pg. 1 of 7.)



EirGrid Survey Letter

Mr. SAMPLE ONLY

**Duagh,
Listowel,
Co. Kerry.**

Date: 25/10/2011

Landowner No: XX

Re: Proposed Cloghoola to Trien 110kV Line.

Dear Mr. John Moloney,

You may be aware as a result of recent public consultations, that development of the national electricity transmission system in your area is proposed to be carried out by EirGrid plc ("EirGrid"). It is part of EirGrid's role to plan the system, and in doing so, we have identified the need for a new 110kV electricity circuit between the existing Trien station and Cloghoola 110kV windfarm station near Knocknagashel. EirGrid has been in the process of carrying out research into the most appropriate route for this project following on from which an indicative route has been identified that would, if adopted, affect your lands situate in the:

Townland of	XX Sample only
Barony of	Clanmaurice
County of	County Kerry

The approximate position of the indicative route is shown on the attached map which is to a scale of 1:10,000. A representative of EirGrid will shortly contact you as we would like to discuss the route with you. This is to ensure that you have an opportunity to raise directly with us any concerns you may have or suggestions you may wish to make regarding the project as it affects your property. We may also be looking to arrange with you a suitable time for representatives of EirGrid to enter onto your land to carry out surveys should these be considered to be necessary.

Every effort will be made to ensure that your comments and concerns are taken account of prior to an application for planning approval being made to An Bord Pleanála. It would be of the greatest assistance to both EirGrid and to you to provide as much information as possible to ensure that fully informed decisions can be made with respect to this project. Please also be assured that any discussions that you have with us will not in any way prejudice your statutory rights to make submissions or observations to An Bord Pleanála as part of the planning process.

An information note regarding EirGrid's Policy Towards Landowners for Access and Survey of Land is printed on the reverse of this letter together with a short statement setting out the legal basis on which EirGrid was established and its rights with respect to entry onto land to carry out surveys in support of its functions. Every effort will be made to ensure that any survey that may be required is carried out with the minimum of inconvenience or disturbance to you and your property.

Yours sincerely,

The Oval, 160 Shelbourne Road,
Ballsbridge, Dublin 4.
160 Bóthar Shíol Bhroin,
Droichead na Dothra, Baile Átha Cliath 4.
TELEPHONE +353 (0)1 677 1700
FAX +353 (0)1 861 5375
E-MAIL info@eirgrid.com

Directors: Bernie Gray, Chairperson, Dermot Byrne, Chief Executive, Dr Gary Hooley,
Cormac MacDonnchadha, Martina Moloney, Regina Moran, Liam O'Halloran, Breda Rosney,
Dr. Joan Smyth, Richard Sterling

Registered Office
The Oval, 160 Shelbourne Road, Ballsbridge, Dublin 4, Ireland
Registered in Ireland No. 338522 V.A.T. No. IE 635852211

www.eirgrid.com

Appendix 6. Survey Notice, Sample Cover letter (Survey Notice Pg. 2 of 7.)

Information regarding EirGrid's functions, powers and survey policy

Background to EirGrid plc

EirGrid plc (hereinafter referred to as "EirGrid") of The Oval, 160 Shelbourne Road, Ballsbridge, Dublin 4 was established pursuant to Regulation 34 of the European Communities (Internal Market in Electricity) Regulations 2000 (S.I. No. 445/2000) and is the licensed Transmission System Operator for Ireland pursuant to Section 14 of the Electricity Regulation Act 1999. EirGrid is an independent company.

EirGrid has the exclusive function to operate and ensure the maintenance of and, if necessary, develop a safe, secure, reliable, economical and efficient electricity transmission system.

The Electricity Supply Board (hereinafter referred to as the "ESB") of 27 Lr Fitzwilliam St, Dublin 2, was constituted by the Electricity Supply Act, 1927. ESB is the licensed Transmission Asset Owner for Ireland pursuant to Section 14 of the Electricity Regulation Act 1999. In that role, ESB is responsible for building the transmission system. However, EirGrid will be responsible for making application to An Bord Pleanála for planning approval.

Right to Enter and Survey Land

In accordance with established practice, EirGrid shall attempt to seek entry onto lands, for the purpose of surveying the route of an electric line across such lands, by agreement with the owners of those lands.

In the event that entry onto lands, for the purpose of surveying the route of an electric line across such lands, is not forthcoming on a voluntary basis, then EirGrid may require entry, pursuant to Section 20(4) of the Electricity (Supply) Act, 1927, as amended by Regulation 8 of S.I. 445/2000.

Whether entry onto lands, for the purpose of surveying the route of an electric line across such lands, is secured by way of agreement with the landowner or by exercising statutory powers, EirGrid shall ensure that "EirGrid Policy Towards Landowners for Access and Survey of Land" (set out below) is adhered to.

EirGrid Policy Towards Landowners for Access and Survey of Land

1. EirGrid will ensure that staff and representatives acting for EirGrid will be suitably qualified and briefed on their responsibilities before entering private lands (or premises) or dealing with owners.
2. EirGrid will take reasonable steps to identify and contact the owner of the land (or premises) before entering private lands (or premises). The owners of land (or premises) will be dealt with honestly and fairly.
3. EirGrid will, where practicable, inform the landowner of what survey work is proposed and, as far as possible, a timetable for its completion.
4. Queries from the owner of the land will be dealt with promptly and courteously.
5. EirGrid staff and representatives will only enter lands or premises for legitimate purposes related to its activities and duties.
6. EirGrid staff and representatives will take reasonable steps to ensure that land (or premises) is left in as good a state as when EirGrid staff or representatives arrived.
7. EirGrid staff and representatives will endeavour to ensure that restrictions on the use of the land (or premises) during the survey stage are minimised.
8. EirGrid staff and representatives shall ensure due care and attention is taken to minimise the risk of spreading disease to or from farmland.
9. EirGrid staff and representatives shall take particular care to close all gates behind them and not to damage fences or hedges.
10. In the event of queries from the owner of the land (or premises) for further information, contact details for EirGrid will be advised to allow for such queries to be dealt with.



Terms of Reference for Landowner Engagement

EirGrid is committed to providing an accessible, Meaningful, and accountable consultation process.

With the announcement of the Final Route Corridor, EirGrid is now commencing landowner consultation and engagement. This engagement will be carried out in accordance with EirGrid's code of practice in relation to access to land and/or premises (see the accompanying letter from EirGrid).

EirGrid is seeking to engage with landowners with a view to ultimately identifying a final proposal that will be submitted to An Bord Pleanála for approval. Issues raised by landowners that relate to the project are important to EirGrid and will be documented and fed back to the project team for consideration.

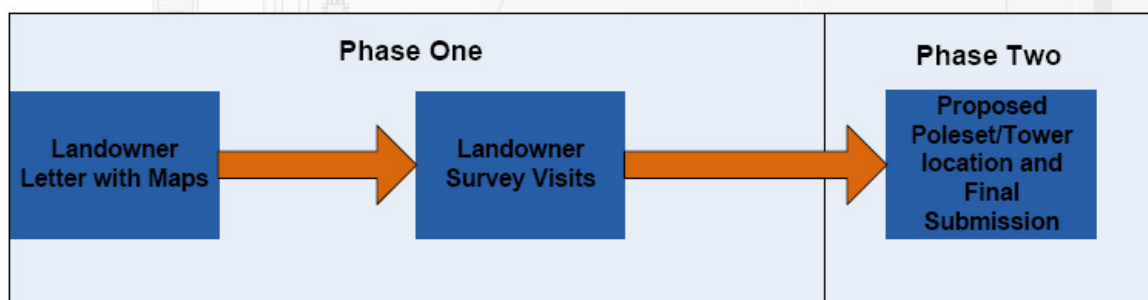
The Engagement process will have two phases:

PHASE 1: INDICATIVE ROUTE

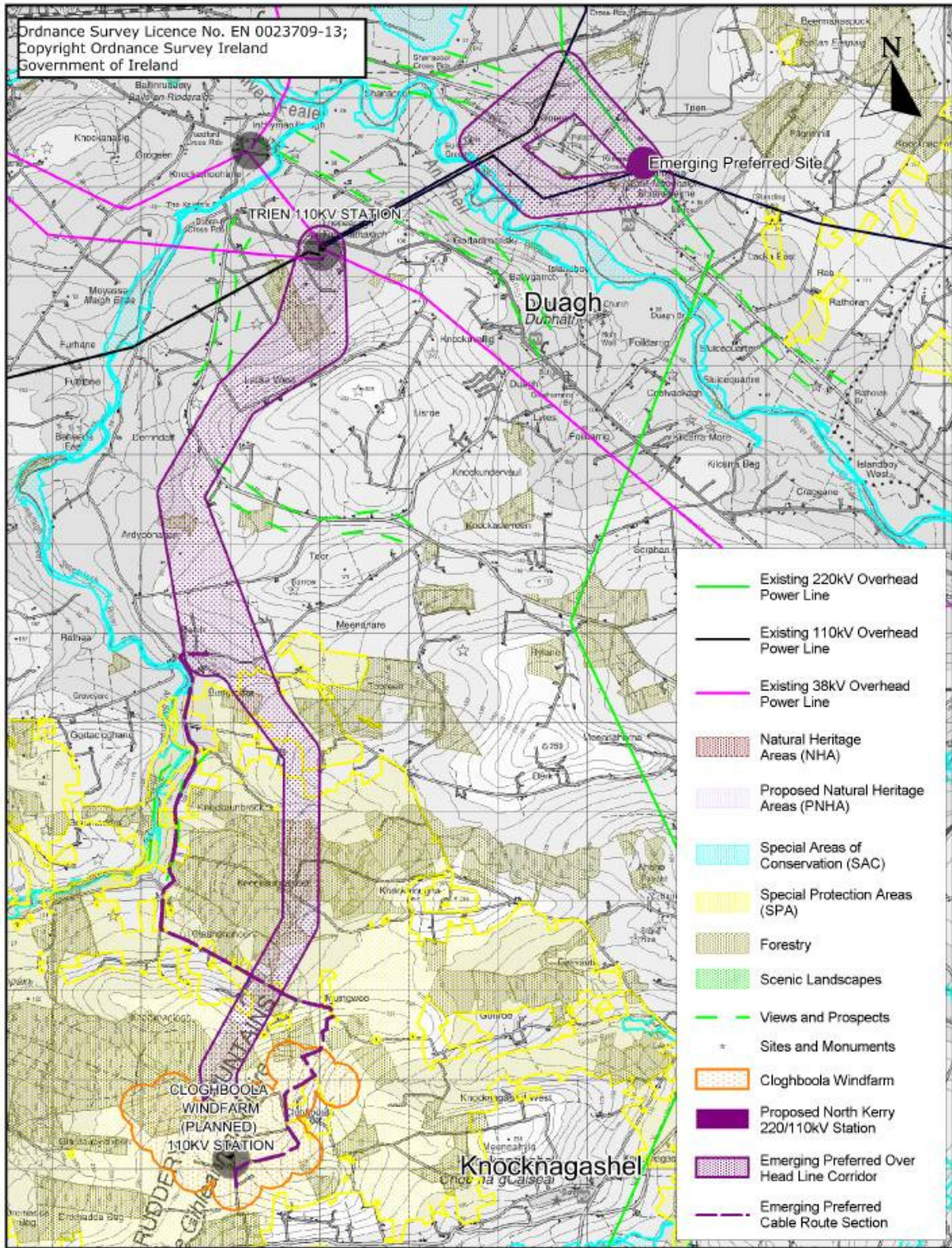
Phase one will be an opportunity to meet and discuss with landowners ownership of land, the line route and possible positioning of poleset/towers. It is also an opportunity to identify local constraints as well as any other issues the landowner may wish to raise.

PHASE 2: FINAL PROPOSAL

In Phase two landowners will be informed of the final proposal that EirGrid is submitting to An Bord Pleanála for approval. Landowners will receive maps and information confirming the route and poleset/tower locations included in the application as well as information on the statutory consultation phase.



Appendix 6. Survey Notice, Sample Cover letter (Survey Notice Pg. 5 of 7.)



<p>Copyright © ESB INTERNATIONAL LIMITED All rights reserved. No part of this work may be modified or reproduced or copied in any form or by means - graphic, electronic or mechanical, including photocopying, recording, taping, or information and retrieval system or used for any purpose other than its designated purpose, without the written permission of ESB International Limited.</p> <p>ESB International ESB Energy Innovation</p> <p>ESB Engineering Solutions, Stephen Court, 18-21 St. Stephens Green, Dublin 2, Ireland. Tel: +353 (0)1 703 8000 Fax: +353 (0)1 703 7196 Email: marketing@esb.ie Web: www.esb.ie</p> <p>2012 International Standards for Environmental and Social Reporting & Trade Management Limited Registered Office: 100, 101, 102, 103, 104, 105, 106, 107, 108, 109, 110, 111, 112, 113, 114, 115, 116, 117, 118, 119, 120, 121, 122, 123, 124, 125, 126, 127, 128, 129, 130, 131, 132, 133, 134, 135, 136, 137, 138, 139, 140, 141, 142, 143, 144, 145, 146, 147, 148, 149, 150, 151, 152, 153, 154, 155, 156, 157, 158, 159, 160, 161, 162, 163, 164, 165, 166, 167, 168, 169, 170, 171, 172, 173, 174, 175, 176, 177, 178, 179, 180, 181, 182, 183, 184, 185, 186, 187, 188, 189, 190, 191, 192, 193, 194, 195, 196, 197, 198, 199, 200, 201, 202, 203, 204, 205, 206, 207, 208, 209, 210, 211, 212, 213, 214, 215, 216, 217, 218, 219, 220, 221, 222, 223, 224, 225, 226, 227, 228, 229, 230, 231, 232, 233, 234, 235, 236, 237, 238, 239, 240, 241, 242, 243, 244, 245, 246, 247, 248, 249, 250, 251, 252, 253, 254, 255, 256, 257, 258, 259, 260, 261, 262, 263, 264, 265, 266, 267, 268, 269, 270, 271, 272, 273, 274, 275, 276, 277, 278, 279, 280, 281, 282, 283, 284, 285, 286, 287, 288, 289, 290, 291, 292, 293, 294, 295, 296, 297, 298, 299, 300, 301, 302, 303, 304, 305, 306, 307, 308, 309, 310, 311, 312, 313, 314, 315, 316, 317, 318, 319, 320, 321, 322, 323, 324, 325, 326, 327, 328, 329, 330, 331, 332, 333, 334, 335, 336, 337, 338, 339, 340, 341, 342, 343, 344, 345, 346, 347, 348, 349, 350, 351, 352, 353, 354, 355, 356, 357, 358, 359, 360, 361, 362, 363, 364, 365, 366, 367, 368, 369, 370, 371, 372, 373, 374, 375, 376, 377, 378, 379, 380, 381, 382, 383, 384, 385, 386, 387, 388, 389, 390, 391, 392, 393, 394, 395, 396, 397, 398, 399, 400, 401, 402, 403, 404, 405, 406, 407, 408, 409, 410, 411, 412, 413, 414, 415, 416, 417, 418, 419, 420, 421, 422, 423, 424, 425, 426, 427, 428, 429, 430, 431, 432, 433, 434, 435, 436, 437, 438, 439, 440, 441, 442, 443, 444, 445, 446, 447, 448, 449, 450, 451, 452, 453, 454, 455, 456, 457, 458, 459, 460, 461, 462, 463, 464, 465, 466, 467, 468, 469, 470, 471, 472, 473, 474, 475, 476, 477, 478, 479, 480, 481, 482, 483, 484, 485, 486, 487, 488, 489, 490, 491, 492, 493, 494, 495, 496, 497, 498, 499, 500, 501, 502, 503, 504, 505, 506, 507, 508, 509, 510, 511, 512, 513, 514, 515, 516, 517, 518, 519, 520, 521, 522, 523, 524, 525, 526, 527, 528, 529, 530, 531, 532, 533, 534, 535, 536, 537, 538, 539, 540, 541, 542, 543, 544, 545, 546, 547, 548, 549, 550, 551, 552, 553, 554, 555, 556, 557, 558, 559, 560, 561, 562, 563, 564, 565, 566, 567, 568, 569, 570, 571, 572, 573, 574, 575, 576, 577, 578, 579, 580, 581, 582, 583, 584, 585, 586, 587, 588, 589, 590, 591, 592, 593, 594, 595, 596, 597, 598, 599, 600, 601, 602, 603, 604, 605, 606, 607, 608, 609, 610, 611, 612, 613, 614, 615, 616, 617, 618, 619, 620, 621, 622, 623, 624, 625, 626, 627, 628, 629, 630, 631, 632, 633, 634, 635, 636, 637, 638, 639, 640, 641, 642, 643, 644, 645, 646, 647, 648, 649, 650, 651, 652, 653, 654, 655, 656, 657, 658, 659, 660, 661, 662, 663, 664, 665, 666, 667, 668, 669, 670, 671, 672, 673, 674, 675, 676, 677, 678, 679, 680, 681, 682, 683, 684, 685, 686, 687, 688, 689, 690, 691, 692, 693, 694, 695, 696, 697, 698, 699, 700, 701, 702, 703, 704, 705, 706, 707, 708, 709, 710, 711, 712, 713, 714, 715, 716, 717, 718, 719, 720, 721, 722, 723, 724, 725, 726, 727, 728, 729, 730, 731, 732, 733, 734, 735, 736, 737, 738, 739, 740, 741, 742, 743, 744, 745, 746, 747, 748, 749, 750, 751, 752, 753, 754, 755, 756, 757, 758, 759, 760, 761, 762, 763, 764, 765, 766, 767, 768, 769, 770, 771, 772, 773, 774, 775, 776, 777, 778, 779, 780, 781, 782, 783, 784, 785, 786, 787, 788, 789, 790, 791, 792, 793, 794, 795, 796, 797, 798, 799, 800, 801, 802, 803, 804, 805, 806, 807, 808, 809, 810, 811, 812, 813, 814, 815, 816, 817, 818, 819, 820, 821, 822, 823, 824, 825, 826, 827, 828, 829, 830, 831, 832, 833, 834, 835, 836, 837, 838, 839, 840, 841, 842, 843, 844, 845, 846, 847, 848, 849, 850, 851, 852, 853, 854, 855, 856, 857, 858, 859, 860, 861, 862, 863, 864, 865, 866, 867, 868, 869, 870, 871, 872, 873, 874, 875, 876, 877, 878, 879, 880, 881, 882, 883, 884, 885, 886, 887, 888, 889, 890, 891, 892, 893, 894, 895, 896, 897, 898, 899, 900, 901, 902, 903, 904, 905, 906, 907, 908, 909, 910, 911, 912, 913, 914, 915, 916, 917, 918, 919, 920, 921, 922, 923, 924, 925, 926, 927, 928, 929, 930, 931, 932, 933, 934, 935, 936, 937, 938, 939, 940, 941, 942, 943, 944, 945, 946, 947, 948, 949, 950, 951, 952, 953, 954, 955, 956, 957, 958, 959, 960, 961, 962, 963, 964, 965, 966, 967, 968, 969, 970, 971, 972, 973, 974, 975, 976, 977, 978, 979, 980, 981, 982, 983, 984, 985, 986, 987, 988, 989, 990, 991, 992, 993, 994, 995, 996, 997, 998, 999, 1000</p>	<p>CLIENT:</p> <p>PROJECT:</p> <p>North Kerry Project</p>	<p>DRAWING TITLE:</p> <p>Emerging Preferred Corridor Map</p> <p>REVISION DESCRIPTION:</p> <p>Initial Issue</p>	<table border="1"> <tr> <td>DRAWN</td> <td>CHECKED</td> <td>APPROVED</td> <td>APPRO DATE</td> </tr> <tr> <td>E.O.M</td> <td>D.R.</td> <td>E.H.</td> <td>Oct 2011</td> </tr> <tr> <td>CLIENT REF</td> <td>No. of Sheets</td> <td>SIZE</td> <td>SCALE</td> </tr> <tr> <td></td> <td>1</td> <td>A4</td> <td>NTS</td> </tr> <tr> <td colspan="2">DRAWING NUMBER:</td> <td colspan="2">SHEET NO.:</td> </tr> <tr> <td colspan="2">PE887-D273-019-001-000</td> <td colspan="2">001</td> </tr> </table>	DRAWN	CHECKED	APPROVED	APPRO DATE	E.O.M	D.R.	E.H.	Oct 2011	CLIENT REF	No. of Sheets	SIZE	SCALE		1	A4	NTS	DRAWING NUMBER:		SHEET NO.:		PE887-D273-019-001-000		001	
	DRAWN	CHECKED	APPROVED	APPRO DATE																							
E.O.M	D.R.	E.H.	Oct 2011																								
CLIENT REF	No. of Sheets	SIZE	SCALE																								
	1	A4	NTS																								
DRAWING NUMBER:		SHEET NO.:																									
PE887-D273-019-001-000		001																									

Appendix 6. Survey Notice, Sample Cover letter (Survey Notice Pg. 6 of 7.).



North Kerry Project
CHECK LIST/RECORD FOR SURVEYOR'S PRELIMINARY VISIT

Sample

- 1) Line: _____ 2) Landowner No. _____
- 3) Name(s) of Occupier(s) or Owner(s): _____
- 4) Telephone No. _____ Mobile No. _____
- 5) Name(s) and relationship of person(s) interviewed: _____
- 6) Was Survey Letter dated _____ and received? Yes No
- 7) Was name and address correct on it? Yes No
- 8) Is the named person owner or occupier ?
- 9) Who else has any legal interest in the land as (joint) owner or occupier, e.g. wife, partner, agent?

- 10) Is the extent of the holding (along the route) correct on map? Yes No
- 11) Is there bloodstock, bulls or need for special care, e.g. precautions against the spread of Brucellosis and Bovine Tuberculosis? Yes No
- 12) Is there restriction on access for survey? Yes No
- 13) Is there restriction on the use of transport on lands during survey? Yes No
- 14) Are there any shelter belts, trees or shrubs of amenity value affected by the route?
If yes, give details: _____
- 15) Was any objection raised (a) to survey (b) to route _____
- 16) Was there mention of any particular spot(s) on the route where a mast would be obstructive? Yes No
- 17) Was there any query left without satisfactory answer? Yes No
- 18) Is the landowner aware of the Code of Practice for Survey, Construction and Maintenance of overhead lines in relation to the rights of landowners as agreed between the ESB and the I.F.A.? Yes No

Signed on Behalf of EirGrid: _____ Date: _____

Signed on Behalf of Owner/Occupier: _____ Date: _____

Any further queries may be addressed to: _____ Notes: _____

EirGrid C/O
North Kerry Project Manager,
ESB International,
Unit 6 Eastgate Avenue,
Eastgate Business Park,
Little Island, Cork.

Copies: White – EirGrid Copy Yellow – landowner copy

Appendix. 6 Survey Notice, Sample Cover letter (Survey Notice Pg. 7 of 7.)



INFORMATION ON ELECTRIC AND MAGNETIC FIELDS

www.eirgrid.com

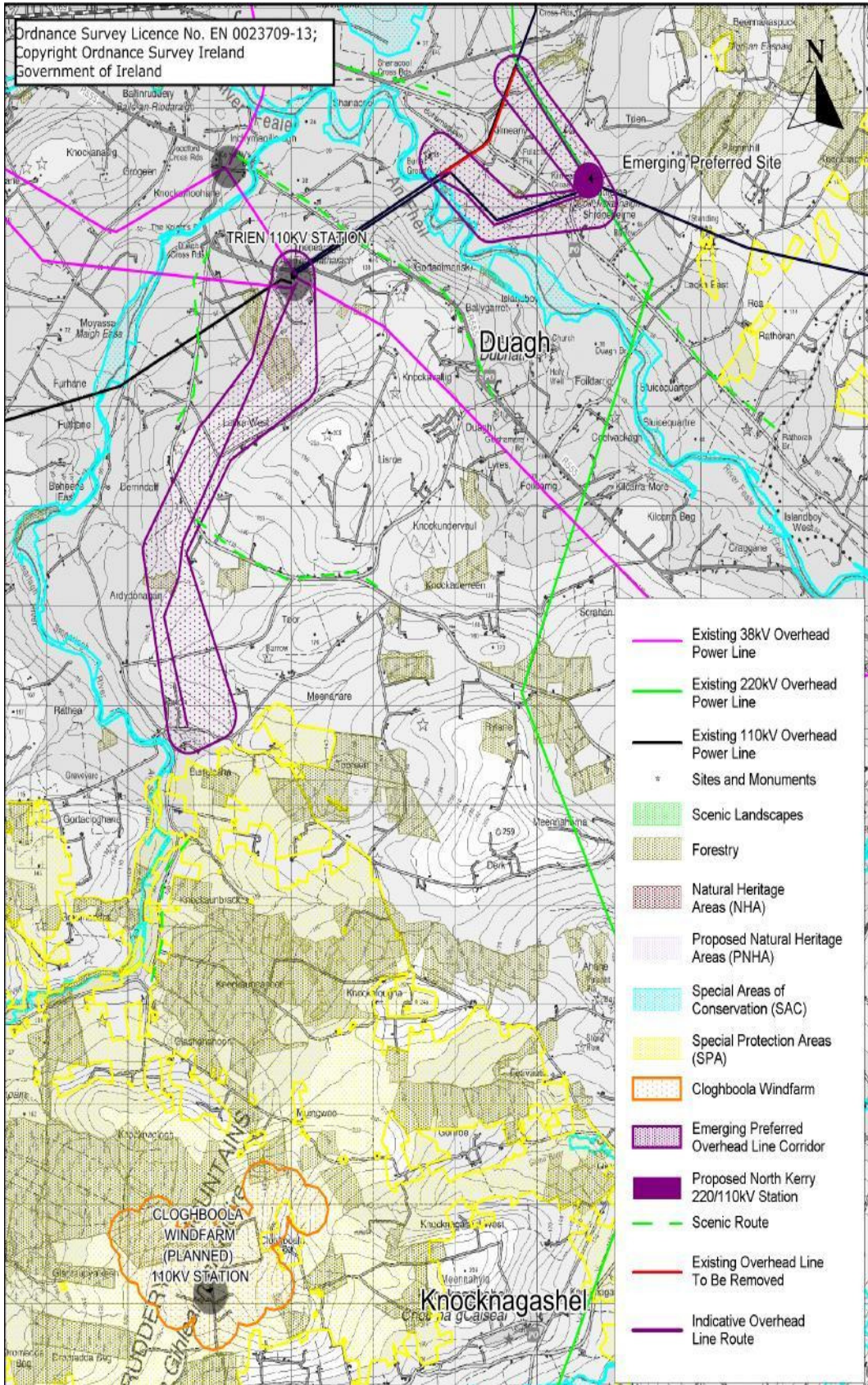
Appendix. 7 EirGrid booklet on EMF. (Available online and from EirGrid project team)

ESB/IFA
Code of Practice
FOR SURVEY, CONSTRUCTION &
MAINTENANCE OF OVERHEAD LINES
IN RELATION TO THE
RIGHTS OF LANDOWNERS

OCTOBER 1985



Appendix 8. ESB/IFA code of practice. (Copy given to landowners and available from project team)



Appendix 9. Indicative Overhead Line Routes

Appendix B : FAQ's Comments and Submissions Received

During the consultation process many general queries and comments were raised by landowners, the public, statutory agencies and others in relation to the project. This chapter seeks to detail these queries and provide general responses.

a. The Need for the Project

EirGrid is the state owned independent Transmission System Operator (TSO) and Market Operator (MO) in Ireland. It is EirGrid's role to deliver quality connection, transmission, and market services to electricity generators, suppliers and customers utilising the high voltage electricity system.

In this capacity, it is proposing a new Reinforcement Scheme in North Kerry. The most significant feature of the North Kerry Project is the development of a new 220kV electricity substation east of the town of Listowel. The proposed development of a new substation in North Kerry is required to remedy identified transmission network problems within this region.

The new substation will connect into the existing 220kV transmission line which runs from Tarbert in Co. Kerry to Clashavoon in Co. Cork. It will also connect into the existing local 110kV transmission lines which run from Tarbert to Trien in Co. Kerry and from Trien to Dromada in Co. Limerick.

In addition, a new 110kV circuit is required to connect the planned Cloghboola 110kV electricity substation to Trien 110kV substation, in the townland of Trienearagh.

It is vital that this new electricity infrastructure is built to ensure that the region meets the standards required for a safe and secure electricity system and to utilise the region's rich renewable energy resources.

This aspect of the project was discussed in detail in the Stage One Consultants Constraints Report published on the EirGrid projects web page (www.eirgridprojects.com/projects/northkerryproject) and widely distributed in print.

b. The Station Location and Route Selection Process

This aspect of the project was discussed in the Stage 1 Report published on the EirGrid projects webpage. It outlines the process by which station locations and routes are selected.

c. Health Effects of Electric and Magnetic Fields (EMF)

EirGrid regards the protection of the health, safety and welfare of its staff and the general public as a core company value. EirGrid is absolutely committed to protecting public safety at all times. It is EirGrid's policy to design and operate the network to the highest safety standards and to continually review and update standards in the light of new developments and research findings.

Independent and authoritative international and national review panels of scientific experts have reviewed studies on the possible health effects of Electric and Magnetic fields (EMFs). These confirm that power frequency EMFs encountered in normal living and working conditions have not been established as causing adverse health effects in humans.

EirGrid recognises that some people remain concerned about issues regarding EMFs and health. EirGrid is committed to addressing these concerns by continuing to:

- Design and operate the transmission system in accordance with the most up-to-date recommendations and guidelines of the various expert and independent international bodies.
- Closely monitor and support engineering and scientific research in this area.
- Provide advice and information to staff and the general public on this issue.

EirGrid has prepared a booklet (See Appendix 7) which is intended to be informative without being unduly technical and which serves to provide a greater understanding of EMF. Should any individual have any further queries on this aspect, the project team are available at all times to address such queries.

d. Visual Impact (Local level)

The project team acknowledge the fact that those living along the proposed route corridor may have concerns regarding the installation of new electrical infrastructure in their locality.

Careful routing of an overhead line is the single most important aspect in reducing the visual impact of a proposed transmission line i.e. following natural lines created by topographic change and using vegetation as a backdrop. Routing of the overhead line however must take account of constraints such as, ecological sites or sites of historical and archaeological interest. The project team is aware that in some locations the visual impact of the proposed development could be an issue of importance to some local landowners/ residents. It is however important to clearly state, that every effort has and will continue to be made to minimise the impact of this proposed infrastructure, when designing the overhead line, both through the route selection and the site specific structure spotting process. Notwithstanding this, the project team acknowledge that there might remain instances locally where the overhead line is considered by some to be visually intrusive.

EirGrid will ensure that every reasonable effort is made to minimise the impact of the proposed overhead line route on local residents this will include:

- The use of a less visually intrusive structure design.
- By careful positioning of structures, where possible in agreement with local landowners.
- The implementation of any other reasonable mitigation measures that are agreed with potentially affected landowners.

e. Proximity to Housing

There is no specified 'minimum distance' other than that required to ensure safety from electrocution. The Electricity Supply Act however requires that any person intending to construct a building within 25 yards (approximately 23 metres) of an existing overhead line must notify ESB in advance. This is required so that ESB Networks can ensure that the works can be carried out safely and that the future safe operation and maintenance of the overhead line, and the proposed building, is ensured. For the proposed NK project and 110kV lines, EirGrid expects to

achieve a minimum clearance distance that is much greater than 23 metres. The actual distance however will not be known until the design is finalised.

f. Interference with Farming Practice

As previously stated, the National Grid, is a meshed network, with approximately 6,500km of these lines already installed throughout Ireland. When the new lines are operational these too will co-exist with current land use and existing farming practice throughout the area. This is at the moment the case all around Ireland. During the construction phase access routes to facilitate construction will be carefully selected to avoid impacts to the surrounding area. In order to access individual OHL structure sites, the contractors will be required to utilise the local public road network in the vicinity of the line. From there access to structure locations is via private land utilising existing farm tracks or roads wherever possible. The route of the access for construction, across a landowner's property is agreed fully with the landowner in advance of construction commencing.

The ESB will take every care during the erection and subsequent work on the line to ensure that farmers' operations are not impacted. Compensation will be paid for crop loss and physical disturbance to lands during construction, by individual agreement with landowners, following the IFA code of practice (Appendix 8). During construction, ESB after consultation with the landowner, shall take all necessary precautions to prevent e.g. the straying of livestock and shall compensate the landowner for any loss, damage or claim arising where it is clearly due to any act or omission on the part of ESB. ESB shall ensure that the local District Veterinary Officer is informed of the entry of ESB vehicles on farms and that the Epidemiology Unit of the Department of Agriculture is made aware of ESB activities in any TB affected areas. (None recorded in this area at present)

EirGrid design and operate the HV network in compliance with all national and international guidelines. They are satisfied from the totality of studies and the views of international authoritative agencies that the balance of evidence is that Electric and Magnetic Field (EMF) do not have any adverse, long-term effect on either public or animal health.

g. Safety (Design and Construction)

It is EirGrid's policy to design and operate the transmission network to the highest safety standards and to comply with the most up to date international guidelines and recommendations.

ESB International has been appointed as the Project Supervisor Design Process (PSDP) for this project and will ensure through coordination of risk assessment and design that this policy is fully implemented.

Subject to planning permission being granted ESB Contract Management Procedures will ensure a safe construction phase of this project and an established maintenance and refurbishment programme for overhead lines of this type will be implemented in future.

Additionally, the following guidance has been developed in partnership with the Health and Safety Authority for those working in close proximity to overhead powerlines:

- Farm well, Farm Safely. (Booklet given to landowners)
- Code of Practice for Avoiding Danger from Overhead Electricity Lines.
- Dangers from Powerlines on Farms - A safety video below was produced as part of the HSA/ESB Alliance to highlight danger of contact with overhead lines on Farms.

h. Noise

Appropriate materials and construction practices will be utilised to minimise the 'noise' that can occur during periods of high humidity. A report on noise levels will be submitted with the planning application.

i. Structure Locations

The design location of polesets and angle masts along the route will greatly influence the level of impact of the proposed project on the receiving environment and local residents. A number of landowners have requested an input as to the exact location of overhead line structures on their lands. These requests will, where possible, be accommodated however this is not always possible due to design limitations.

Structures may also have to be located away from hedgerows to preserve protected wildlife habitats. These locations will be at the discretion of the project ecologist and detailed in the environmental report that will be submitted as part of the planning application.

j. Existing Trien 110kV Substation

As part of the North Kerry Project, it is planned that remedial works will take place at ESB's Trien 110kV substation. These will alleviate some local concerns raised during talks with local residents. This will require the assistance of the local landowners and their co-operation to achieve these improvements fully. Further details will be outlined as part of this planning application.

ESBI Project Manager: North Kerry Project
ESB International
Stephen Court, 18–21 St. Stephen's Green,
Dublin 2, Ireland.

Tel: +353 (0) 1 703 8000 (ESBI)

Tel: +353 (0) 1 702 6642 (EirGrid)

Email: northkerryproject@eirgrid.com