

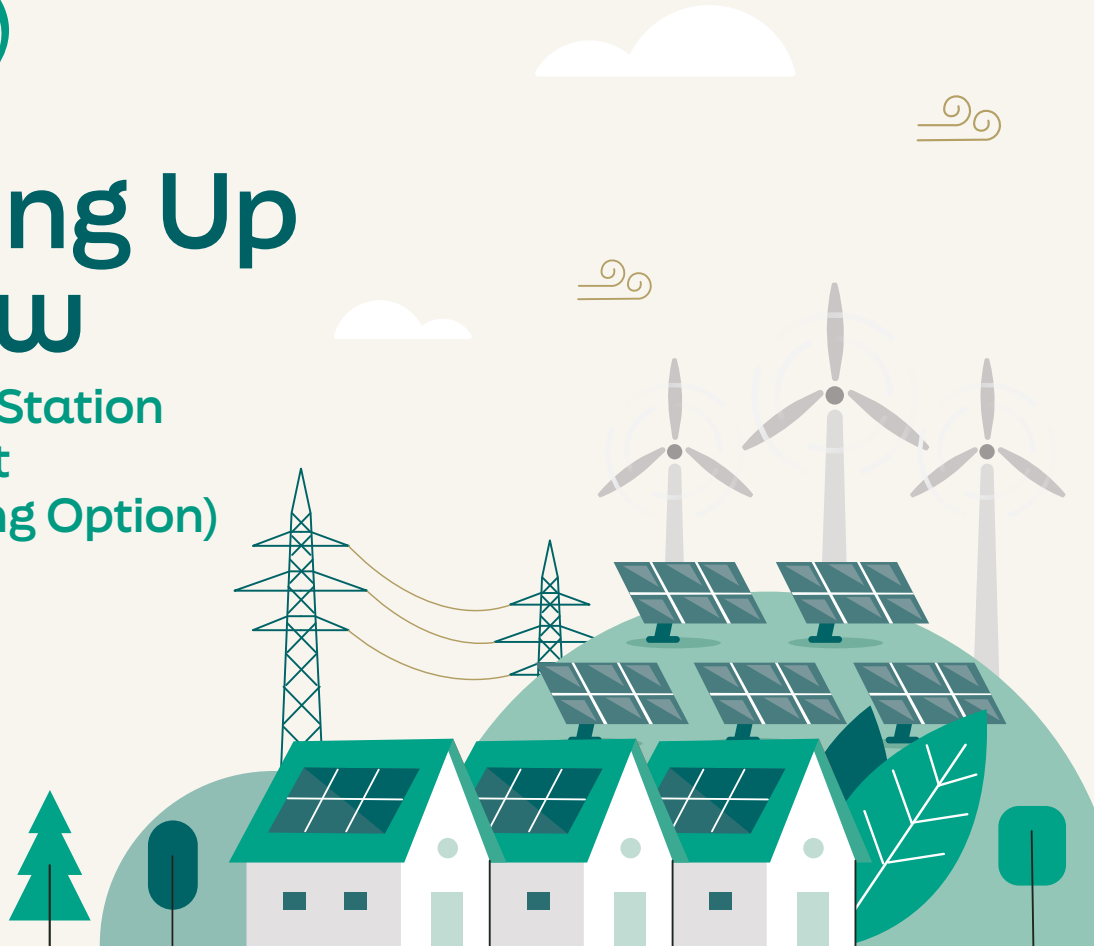


# Powering Up Wicklow

Arklow 220 kV Station  
Redevelopment  
(Best Performing Option)

Public Information

[EirGrid.ie/Wicklow](https://eirgrid.ie/Wicklow)



## Who is EirGrid and what do we do?

EirGrid is a state-owned company that develops, manages, and operates Ireland's electricity grid. We are responsible for the safe, secure, and reliable supply of Ireland's electricity.

EirGrid is responsible for leading the secure transition of the electricity grid to a sustainable, low carbon future.


The grid brings power from where it is generated to the domestic network that supplies the electricity we use every day in homes, businesses, schools and hospitals.

## What is Powering Up Wicklow?

Powering Up Wicklow is a critical programme that will strengthen key electricity infrastructure in Wicklow and the surrounding areas, helping to make Ireland 'renewable ready'. This programme will help deliver a consistent and reliable supply of electricity for Wicklow.

Projects being progressed comprise:

1. Arklow Station Redevelopment.
2. Ballybeg Station Redevelopment and Arklow to Carrickmines Line up voltage.



We are responsible for the safe, secure, and reliable supply of Ireland's electricity.

## What is happening now?

Powering Up Wicklow comprises three projects:

- Arklow Substation redevelopment will be progressed first. This brochure provides further details in relation to this.
- Ballybeg Station Redevelopment and
- Arklow to Carrickmines Line up voltage.

The existing substation in Arklow is reaching its end of life and needs to be replaced. A Gas Insulated Switchgear (GIS) Substation has been identified as the best solution to address the region's growing electricity demand.

This substation replacement will support:

- Residential housing and commercial developments
- Demand growth due to electrification of heat and transport
- Improve security of supply in the Town Centre
- Bringing renewable energy on to the grid

EirGrid has surveyed the surrounding area adjacent to the existing Arklow substation to identify suitable sites for this substation replacement to reinforce the electricity grid in Wicklow.

The most suitable site identified is shown overleaf.

The location is adjacent to the existing Arklow substation.

## Project Benefits



### Security and reliability of supply

Building a more resilient and reliable electricity grid helps ensure that everyone has power when and where they need it. This upgrade will also enable independence by harnessing greener energy sources.



### Meet future needs

These improvements will also help to meet the growing and changing electricity needs of Wicklow. This includes the electrification of transport systems, vehicles and heating, the requirement of large energy users and the development of housing and offices.



### Sustainability

Powering Up Wicklow will enable the county to use and transmit electricity generated from offshore wind energy. This is a vital step to help Ireland transition to a low-carbon electricity future.



### Economic

These critical upgrades will help strengthen Ireland's economy, encouraging and supporting future investment.



### Community

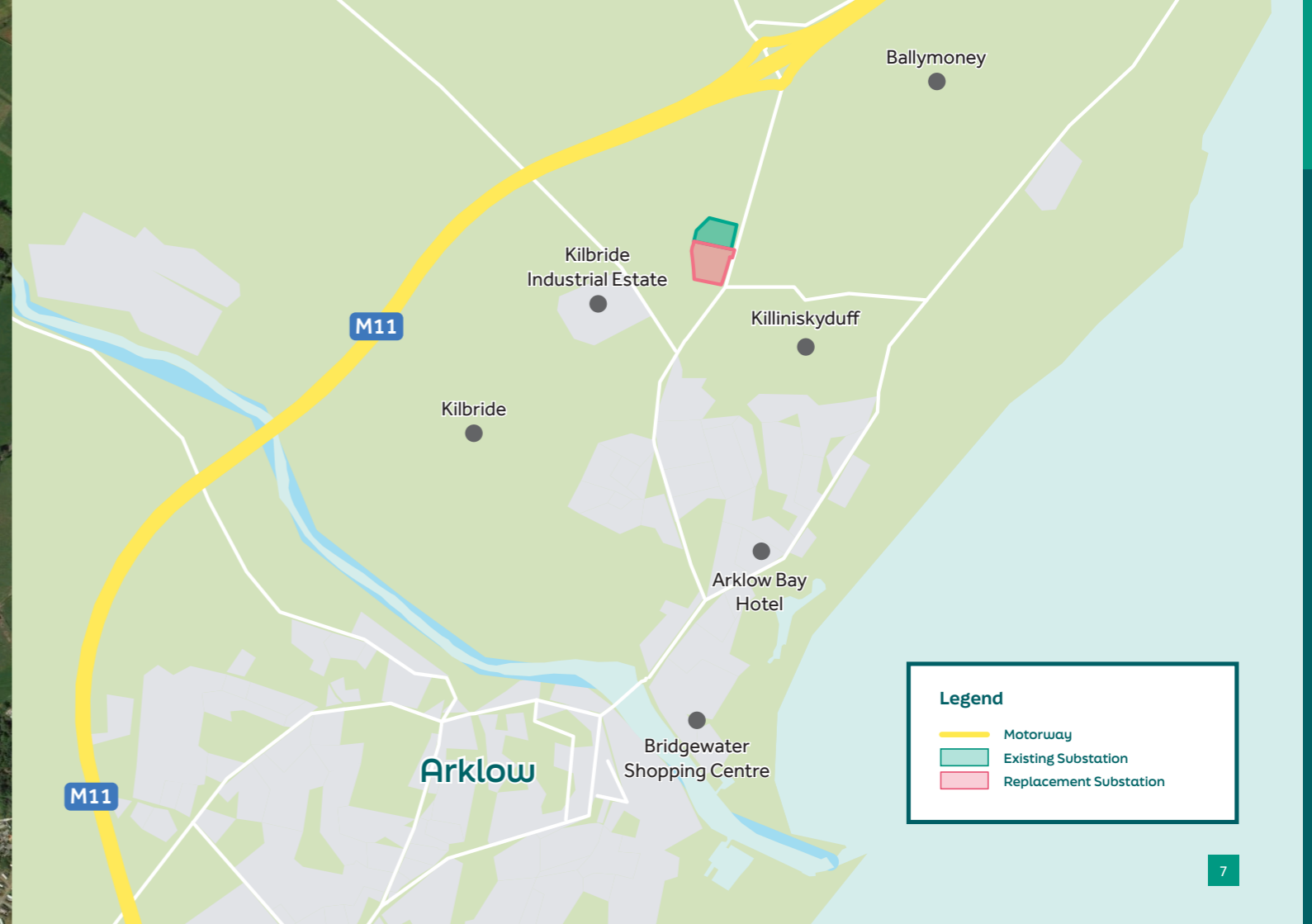
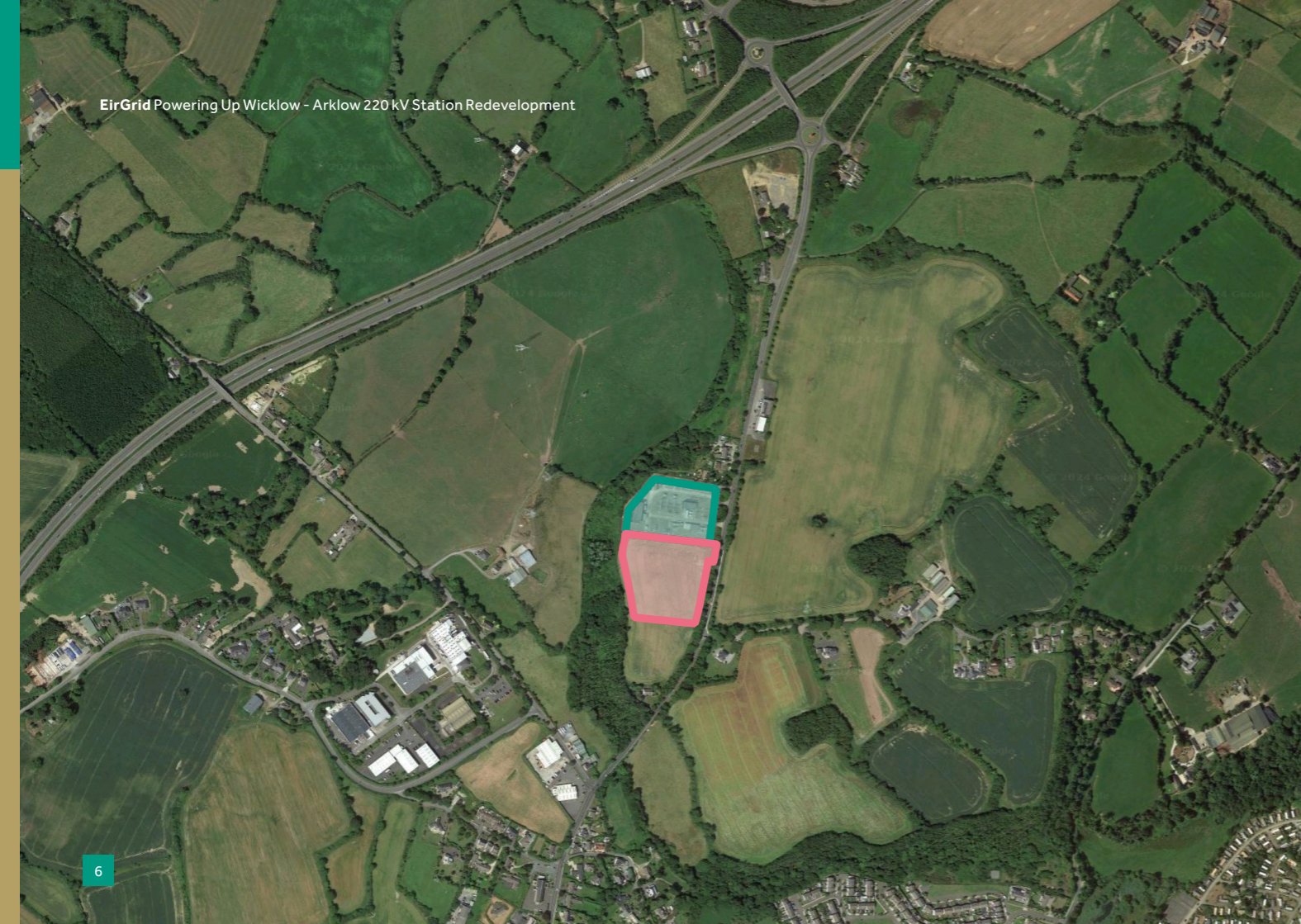
Our community benefit policy will directly support local communities in the areas that host the project infrastructure.



### Local

Helping to meet increasing local transport and housing electrification requirements.





**Legend**

- Motorway
- Existing Substation
- Replacement Substation

## Frequently Asked Questions

The following section will answer frequently asked questions related to Powering Up Wicklow and the Arklow 220 kV Station Redevelopment. If you have any further queries, information on how to get in touch can be found at the end of this document.

### Why does Wicklow need a new transmission station?

The Arklow 220kV Station is a crucial electricity transmission hub along the coast between Dublin and the southeast. It has both gas insulated and air insulated switchgear for handling high voltage electricity.

The station is now aging and needs significant repairs or rebuilding. In addition, it requires

expansion as it has sufficient capacity for future connection needs which include projects that enable offshore wind development.

### How was this location chosen?

The suitability of multiple potential sites was explored during Step 3 of EirGrid's framework for grid development. Potential locations for the station were assessed under the following considerations:

- Technical feasibility;
- Economic;
- Environmental impact;
- Socio-economic impact; and
- Deliverability.

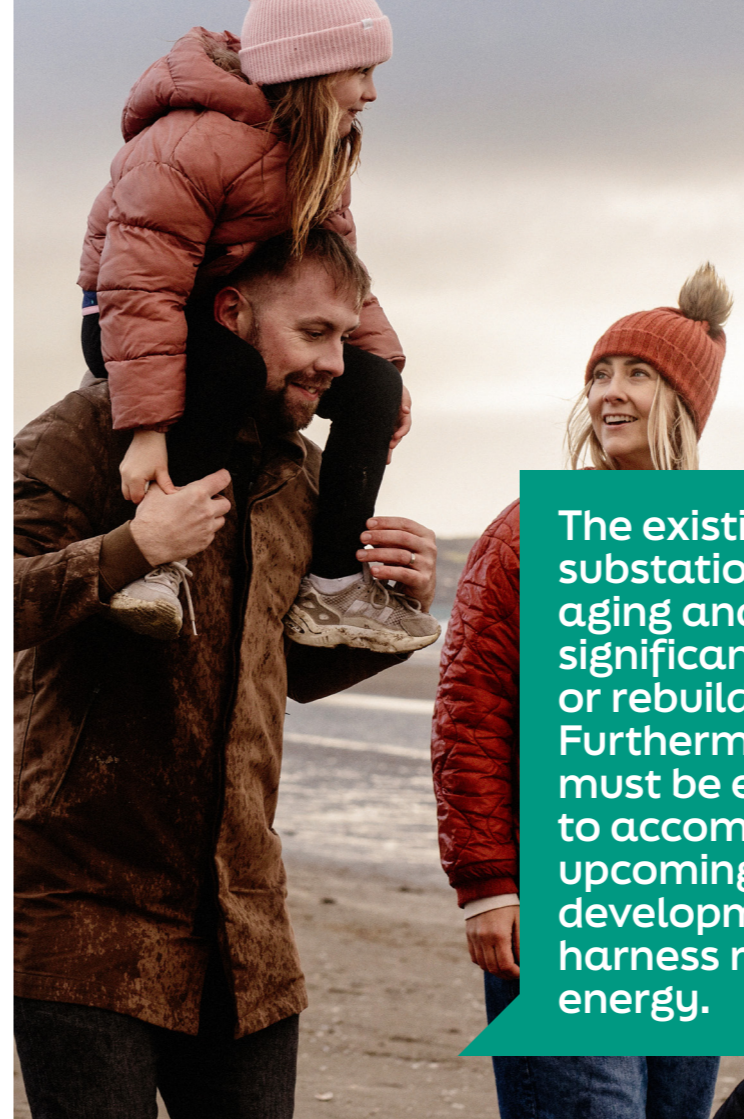
Using these criteria, the location outlined in this document has been deemed the most suitable.

### What is a Gas Insulated Substation (GIS)

A GIS is an indoor electricity substation that supplies the local electricity distribution network, bringing power to homes and businesses. GIS are smaller than Air Insulated Substations (AIS) and therefore more suitable for this constrained site. Additionally, the equipment is fully enclosed within a structure and more in keeping with the existing environment.

### What will the station do?

The new transmission substation will replace the existing substation as it has insufficient capacity for known future connection needs, which include projects that enable offshore wind development.



The existing substation is now aging and needs significant repairs or rebuilding. Furthermore, it must be expanded to accommodate upcoming housing development and harness renewable energy.

### When will the station be built?

Construction will commence in 2028 and will be completed by 2030.

### What are the next steps?

EirGrid will continue to assess the technical feasibility of the site identified and work with the local community and stakeholders. Constraints reporting and mapping and environmental studies will be undertaken as the design is finalised.



### How does EirGrid work with local communities?

Much work has been ongoing across the wider Powering Up Wicklow programme in advance of this phase. EirGrid is committed to putting communities at the centre of its work. In line with this commitment, we will keep you informed every step of the way as we progress our plans and listen to your feedback as we strengthen the grid in your area.

Our dedicated Community Liaison Officer (CLO) working on the Powering Up Wicklow Programme is Liz Dillon. Contact details for Liz can be found at the end of this document.

### Is there a Community Benefit Fund associated with this project?

Yes, we will work to give back to communities as part of our Community Benefit Policy. Our support will focus on the themes of community, sustainability, and biodiversity.

## Information Events

As per EirGrid’s policy, funding will be made available to local community, sustainability and biodiversity groups and projects upon construction of the station.

Visit [eirgrid.ie/community](http://eirgrid.ie/community) to hear more about EirGrid’s Community Benefit Fund, or get in touch by emailing [wicklow@eirgrid.ie](mailto:wicklow@eirgrid.ie).

### How can I find more information on this project?

All information related to the Powering Up Wicklow project can be found on our website [eirgrid.ie/wicklow](http://eirgrid.ie/wicklow).


EirGrid will also hold two information events in the Arklow area in November 2024.


EirGrid will be holding two pop-up information events to provide members of the public with information on Powering Up Wicklow and the Arklow 220 kV Station Redevelopment. These events offer an opportunity for interested people and groups to:

- Speak with a member of the technical team and our Community Liaison Officer
- View details of the project
- Ask questions or discuss issues which may arise from the project

These events are drop-in and you do not need to make an appointment. Our team is also happy to meet with individuals, community and business groups on a one-to-one basis if requested.

The details of the events are as follows:

 **7 November,**  
11.00 – 3.00pm Arklow Library, 7 Main St, Arklow, Co. Wicklow, Y14 PY61

 **14 November,**  
11.00 – 3.00pm Bridgewater Shopping Centre, 7 N Quay, Ferrybank, Arklow, Co. Wicklow

## Further Information

If you have any queries,  
please contact:



**Liz Dillon**

Community Liaison Officer

[Liz.Dillon@eirgrid.com](mailto:Liz.Dillon@eirgrid.com)

087 188 7982



The Oval, 160 Shelbourne Rd,  
Dublin, D04 FW28  
01 627 1700 | [EirGrid.ie](http://EirGrid.ie)

