

Associated Transmission Reinforcements (ATRs)

Aidan Corcoran
Manager Grid25 Programme

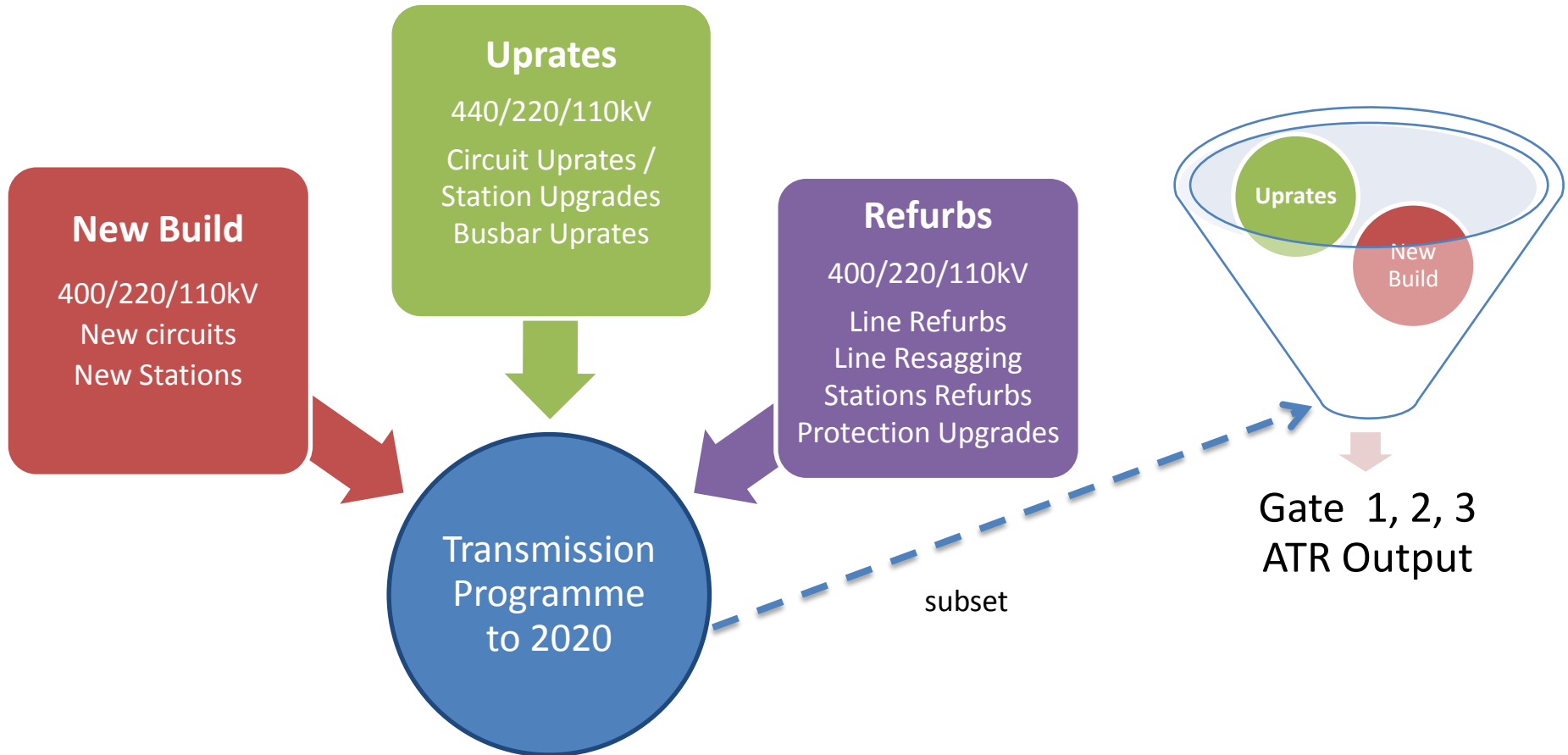
11th December 2012



Contents

- Overview of ATR Projects
- Project types
 - ATRs from 2012-16
 - ATRs from 2017-20
- Summary

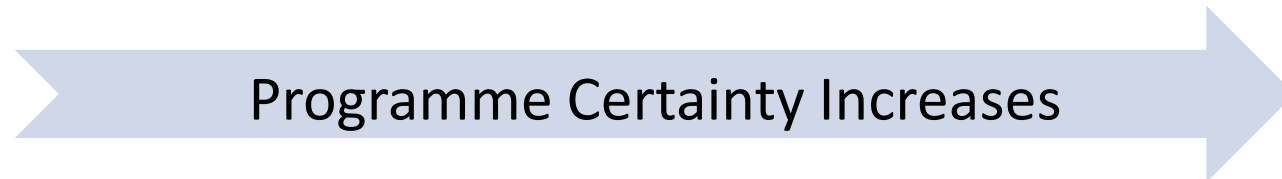
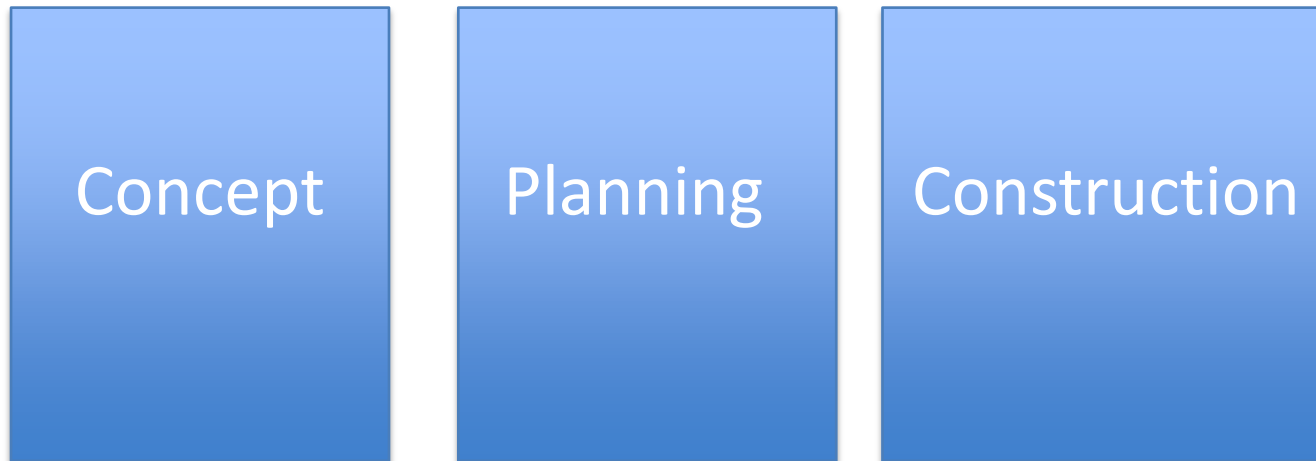
Transmission Programme



Overview of ATR Projects



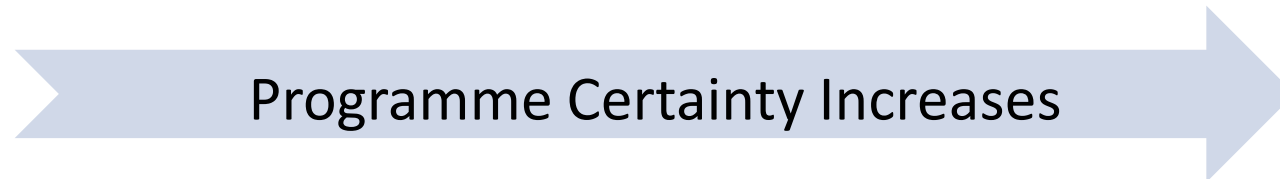
- Projects Phases



Overview of ATR Projects



- Projects Types



Gate 3 ATR Project Types



Gate 3 ATRs can be broadly divided into 2 categories

1. 2012 – 2016 ATRs

- Line Uprates
- Station Busbar Uprates
- New Build Station Projects

Moderate
Risk

2. 2017 – 2020 ATRs

- Large scale linear projects
- Indicative timelines based on standard assumptions

High Risk

2012-16 ATRs



1. Current Status
2. Project completion and experience
3. Approach taken to determine ATR dates
4. Risks



Current Status



- Under the 2010 FAQ Analysis the majority of projects were conceptual
- ATR Status from 2012 ITC Analysis

Total	Capital Approval	Project Agreement	Completed
34	27	11	5

- All ATRs are on the EirGrid/ESB Networks works programme



ATR Types



Total	New Line	New Cable	New Station	Line Uprate	Busbar Uprate
34	2	1	4	19	8

- 27 uprates (line/busbar)
- New lines completed in 2012
- New stations have planning permission and construction has commenced in 2 of 4.
- Outage requirements included in programme
- Land Access
 - minimal land access requirements



Track Record 2010-12



2010 215km Line Uprates
2 Station Busbar Uprates
Planning Permissions Achieved

2011 300km Line Uprates
7 Station Busbar Uprates
Planning Permissions Achieved

2012 215km Line Uprates
6 Station Busbar Uprates
Planning Permissions Achieved



Risks & Mitigations



1. Volume of projects

2. Outage Risk

- Mitigation

- Programme designed to allow degree of project rescheduling without impacting FAQ
- Efficient work sequencing to maximise system access
- Detailed resource planning including close cooperation with ESB Networks
- Prioritisation of projects which provide most access





Total line updates and refurbishments from 2012 to 2020

Moneypoint

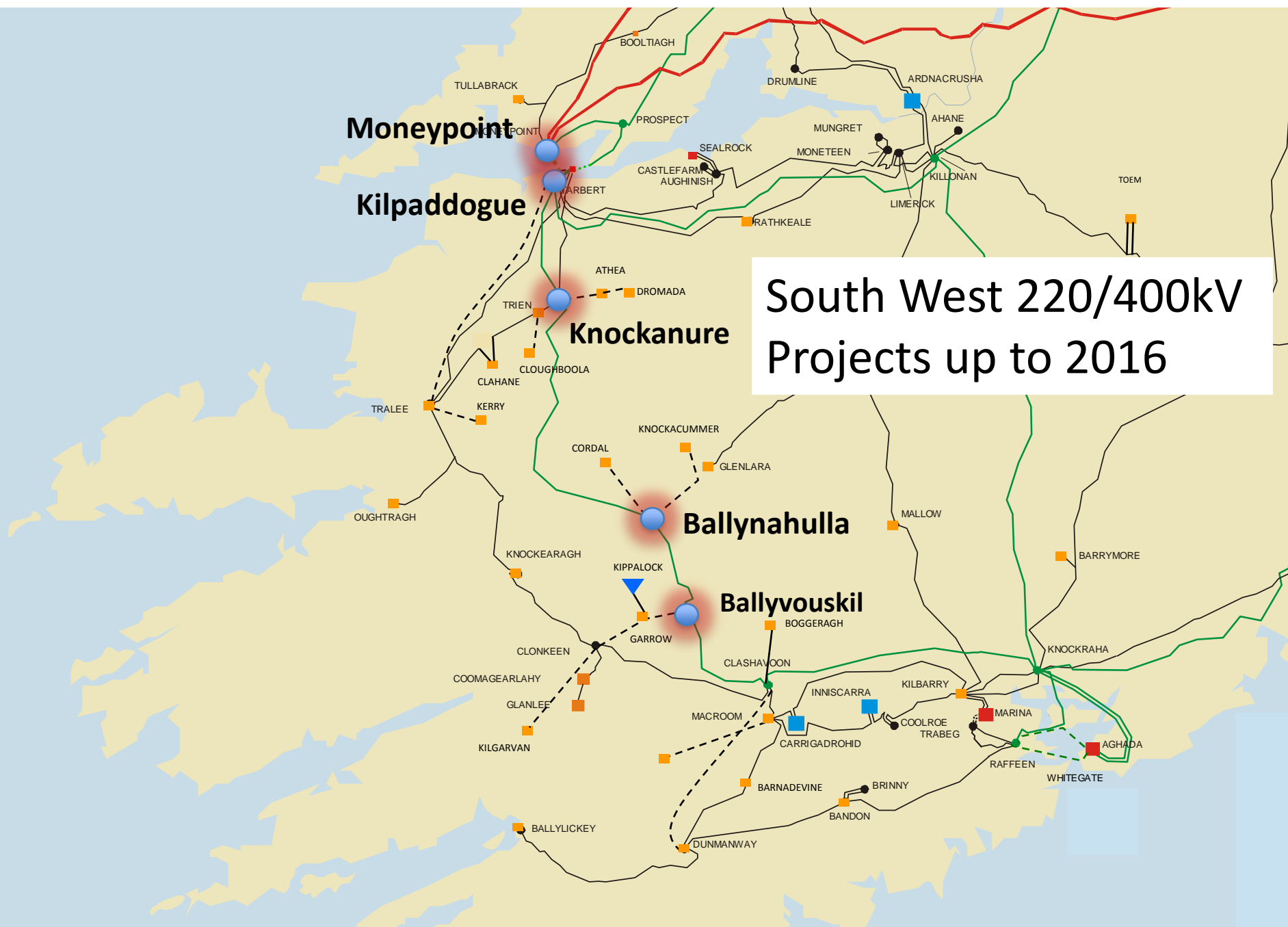
Kilpaddogue

Knockanure

Ballynahulla

Ballyvouskil

**South West 220/400kV
Projects up to 2016**



Confidence based on:



1. Work on all ATRs is underway
2. Experience to date
3. Outages
4. Multi-year planning approach



Gate 3 ATR Project Types



Gate 3 ATRs can be broadly divided into 2 categories

1. 2012 – 2016 ATRs

- Line Uprates
- Station Busbar Uprates
- New Build Station Projects
- Completion dates based on EirGrid/ESB works programme

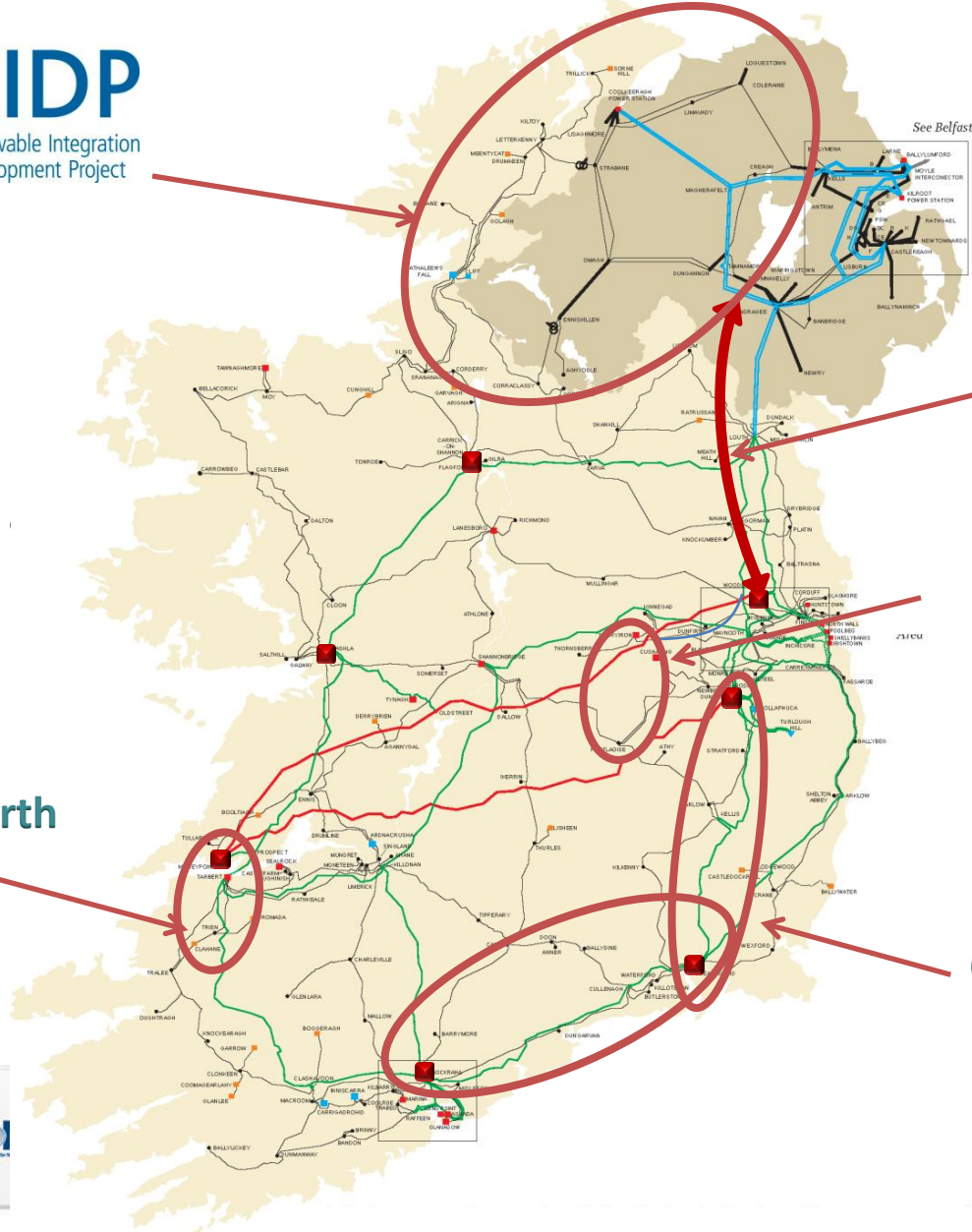
Moderate
Risk

2. 2017 – 2020 ATRs

- Large scale linear projects
- Indicative timelines based on standard assumptions

High Risk

2017-20 ATRs



North-South Interconnector

Laois – Kilkenny Reinforcement

Kilpaddoge – North Kerry

Grid Link



Overview of ATRs



- Large scale linear infrastructure projects
 - Contentious public planning process
 - Landowner access (survey and construction)
 - Public acceptability
- Projects at the early stages of lifecycle
- High risk projects with challenging completion dates



Risks & Mitigations



- Public Acceptability
 - Methodologies and processes
 - Consultative approach
 - Community gain
- Public Planning
 - Expertise
 - Robust applications
- Landowner access
 - Early engagement
 - Consultation
 - Discussion with farming bodies
- Resource
 - Widen supply base.
 - Identify pinch points in the programme.





Consultation Process

Staged Approach

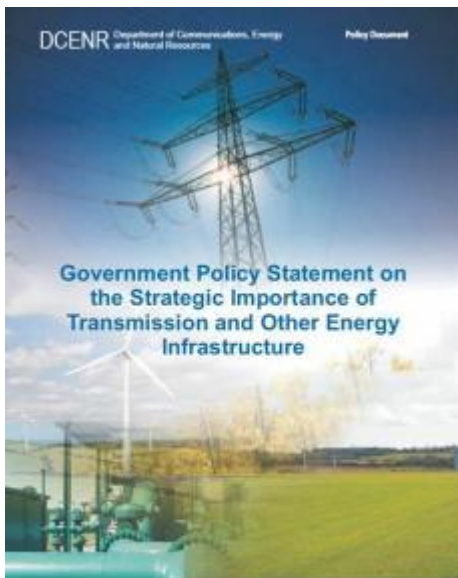
Published Process

Recognition of Public Participation

'Hold Points'

Stage Reports

Government Policy Statement - Key Points



Mandated to deliver the State's network investment programmes in the most cost efficient and timely way possible.

The Government affirms that EirGrid [...]are obligated to adhere to all relevant guidelines and standards and they act in the national interest.

The Government underlines the imperative for the State Companies.....of early, transparent engagement and consultation with local communities and stakeholders....

The Government underlines the imperative [for] the appropriateness of building community gain consideration into project planning and budgeting

It is essential that Grid25 [...]is taken forward on the basis of the best available knowledge and informed engagement on the impacts and costs of different engineering solutions.

State Companies are required to address and mitigate, as necessary, human environmental and landscape impact in delivering the best possible engineering solutions.

 Roinn Cumarsáide, Fianáinín agus Acmhainní Náisiúnta
Department of Communications, Energy and Natural Resources
www.dcenr.gov.ie



North South Project Update



Stage 2 of 5 Stage Roadmap

- Indicative route issued
- Project re-evaluation nearing completion
- Will have close regard for;
 - Recently published Government Policy Statement
 - International Expert Commission report
 - JOC interactions
 - Stakeholder including landowner inputs in 2 past years
- Project moving to stage 3 of the Roadmap in early 2013 onto next phase of consultation
- Planning lodgement later in 2013



North South Interconnection Development

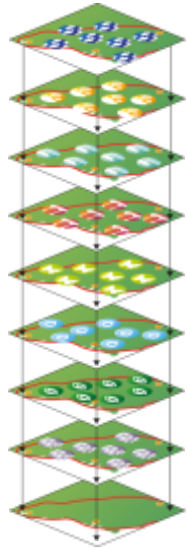
Preliminary Re-evaluation Report

RE-EVALUATION OF THE NORTH-SOUTH INTERCONNECTION

May 2011



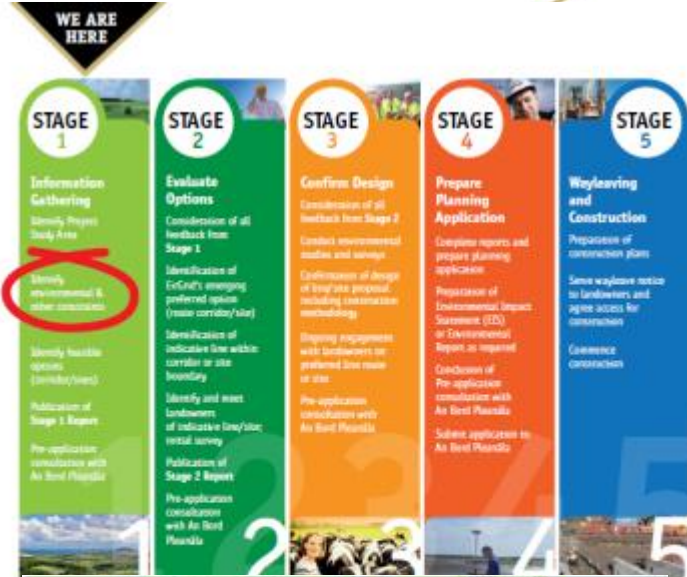
Grid Link Project Update



- Population and Settlement Patterns
- Land Use
- Infrastructure and Utilities
- Cultural Heritage
- Biodiversity
- Water
- Landscape and Visual
- Soils and Geology

Stage 1 of 5 Stage Roadmap

- 21 opens days in 17 locations – **SO FAR....**
- Constraints report recently published
- Next Key Milestone is publication of Corridors in early 2013
- Planning Lodgement 2015



Study Area Scale

- 11 Counties
- < 450 Elected Reps
- 15 Local Authorities
- 1.7 million Citizens



Summary



- A lot of work done on ATRs since the original analysis
- Large degree of confidence regarding the 2012-16 ATR dates
- 2017-20 ATRs are complex and have challenging completion dates
- EirGrid is fully committed and focused on achieving these dates



