



Sustainable Energy Communities Programme

Celtic Interconnector Community Forum

Sustainable Energy Community

24 March 2026

Sean Sweeney. SEAI SEC Mentor Limerick & Cork



Sustainable Energy Community



A community that works together to develop a sustainable energy system for the benefit of the community

- Aiming to be as energy efficient as possible;
- Use renewable energy where feasible;
- Consider smart energy solutions

An SEC can be as small as a street or as large as a county or region

Communities of active energy citizens will lead the societal transformation to a low carbon future

OVER 1000 COMMUNITIES

Part of SEAI's Sustainable Energy Communities Network



MORE THAN
50,000
CITIZENS ENGAGED

196 ENERGY
MASTERPLANS
COMPLETED



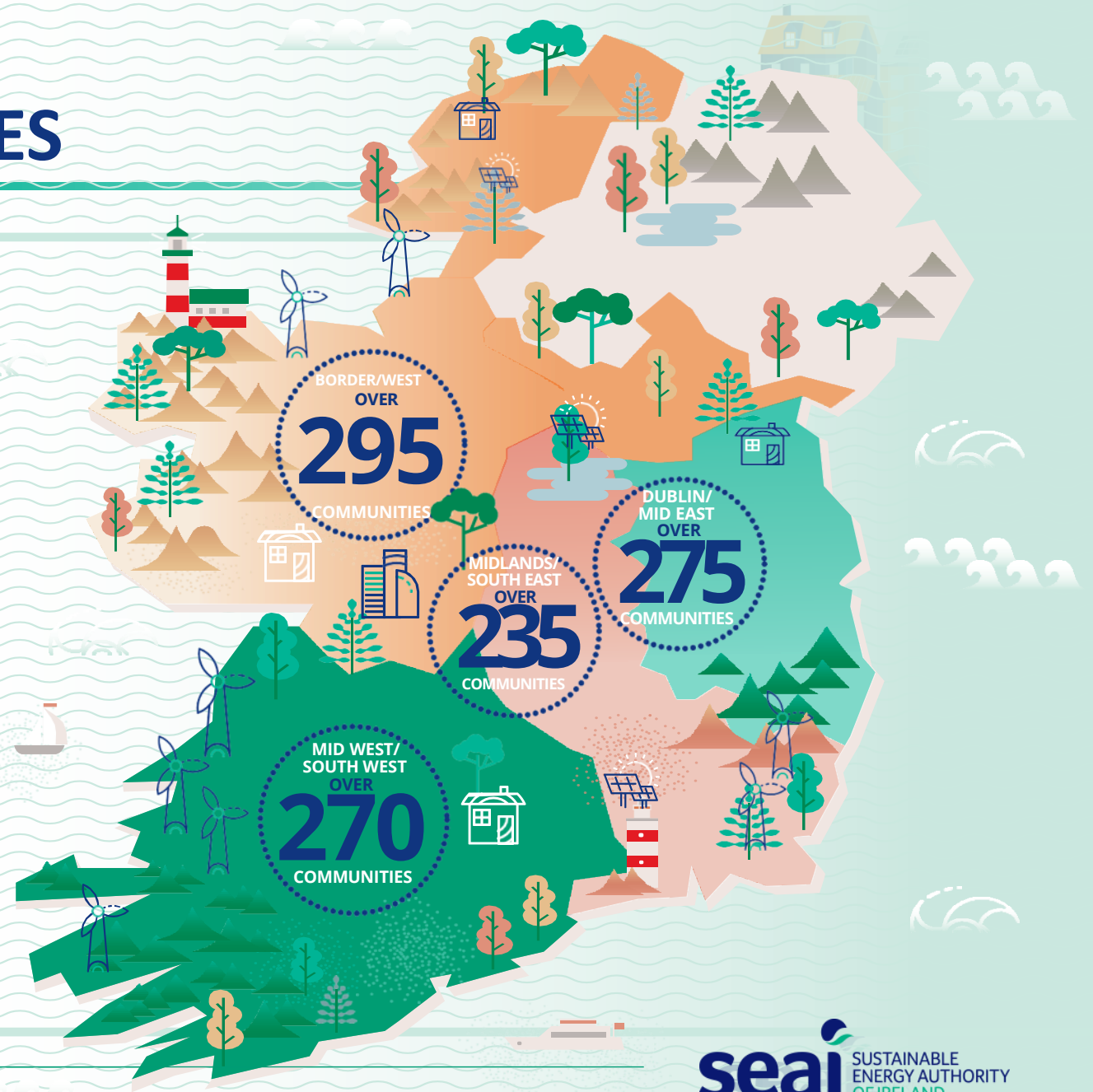
18 Local Authorities
Bridge funding
support



118
COMMUNITIES

Are currently working on their Energy Master Plans

↓ Find out more at www.seai.ie/sec





What Makes a SEC?



Potential Stakeholders within a SEC:

Community Council	Sports Clubs	Housing Groups
Community Groups	Private Individuals	Enterprise and Businesses
Tidy Towns	Resident Groups	Farmers
School(s)	Active Retirement Groups	Service Providers

- **No limitation on** who makes up the stakeholders, but it needs to be a **fair representation of the Community and Area.**



Answer the Question – 'What can we do' – a 100% funding

- **'Learn'.**
 - This can be used for Community Energy Information Sessions.
 - Help understand the technologies and available solutions.
- **Like Minded Individuals.**
 - Buying power.
 - Support within the community.
- **Be Ready for Funding- Climate Action Fund/ LEADER/ Community Benefit Fund**
 - Application Ready.
 - Little to no additional expenses.

SEAI Mentors

Mentors assist SECs in connecting with active organisations in their local community to increase their reach and achieve common goals together.

These mentors:

- Guide communities through the Learn → Plan → Do stages: joining the network, applying for Energy Master Plan (EMP) funding, and implementing projects.
- Provide support through in-person/online events, workshops, templates, and resources.
- Assist with community charter development, EMP grant applications, procurement, and broader energy strategy.





Stages in your SEC Journey



LEARN

Join the Sustainable Energy Community network



1

Apply to join

2

Meet your mentor

3

Access learning and peer support

PLAN

Quantify current energy use and Identify opportunities



4

Apply for Energy Master Plan grant

5

Assign Energy Master Plan technical expert

6

Community launch of Energy Master Plan

DO

Implement your plan and Take Action



7

Prepare your project

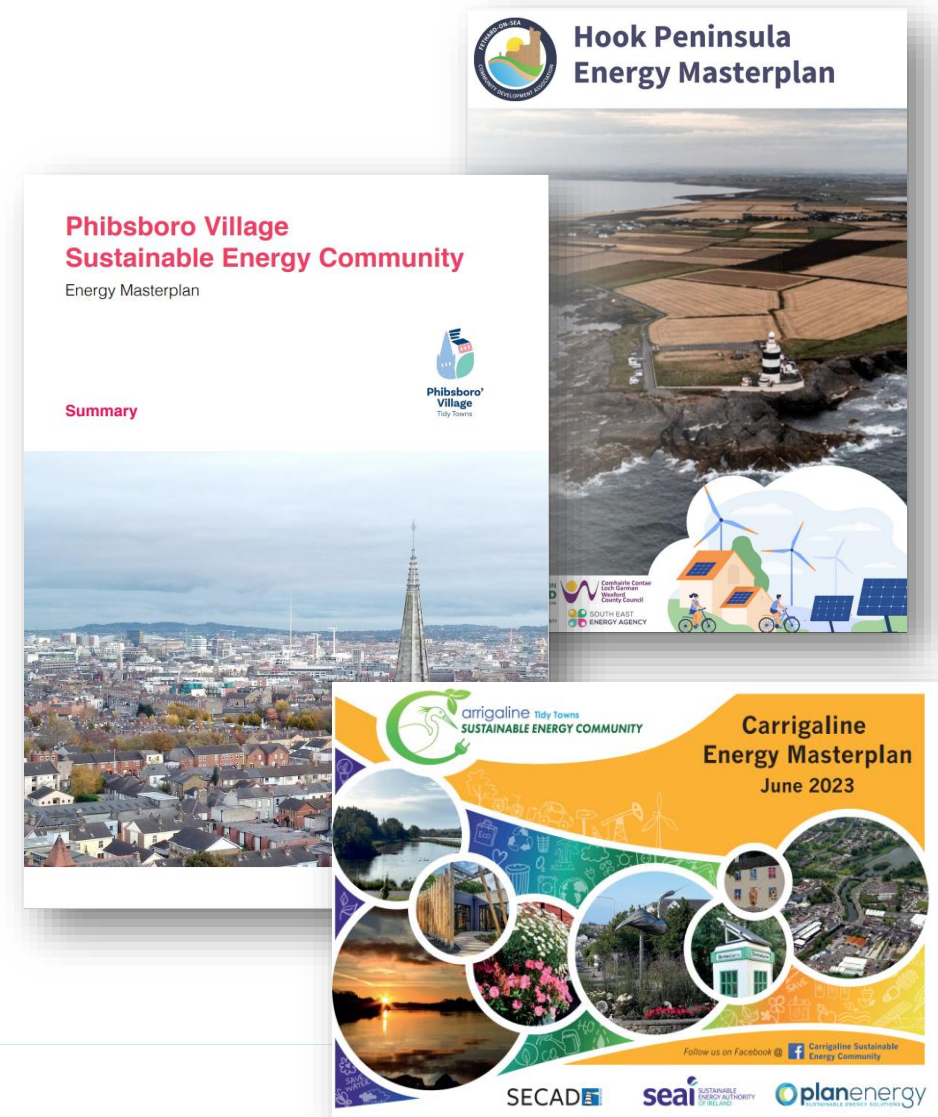
8

Access further grant support

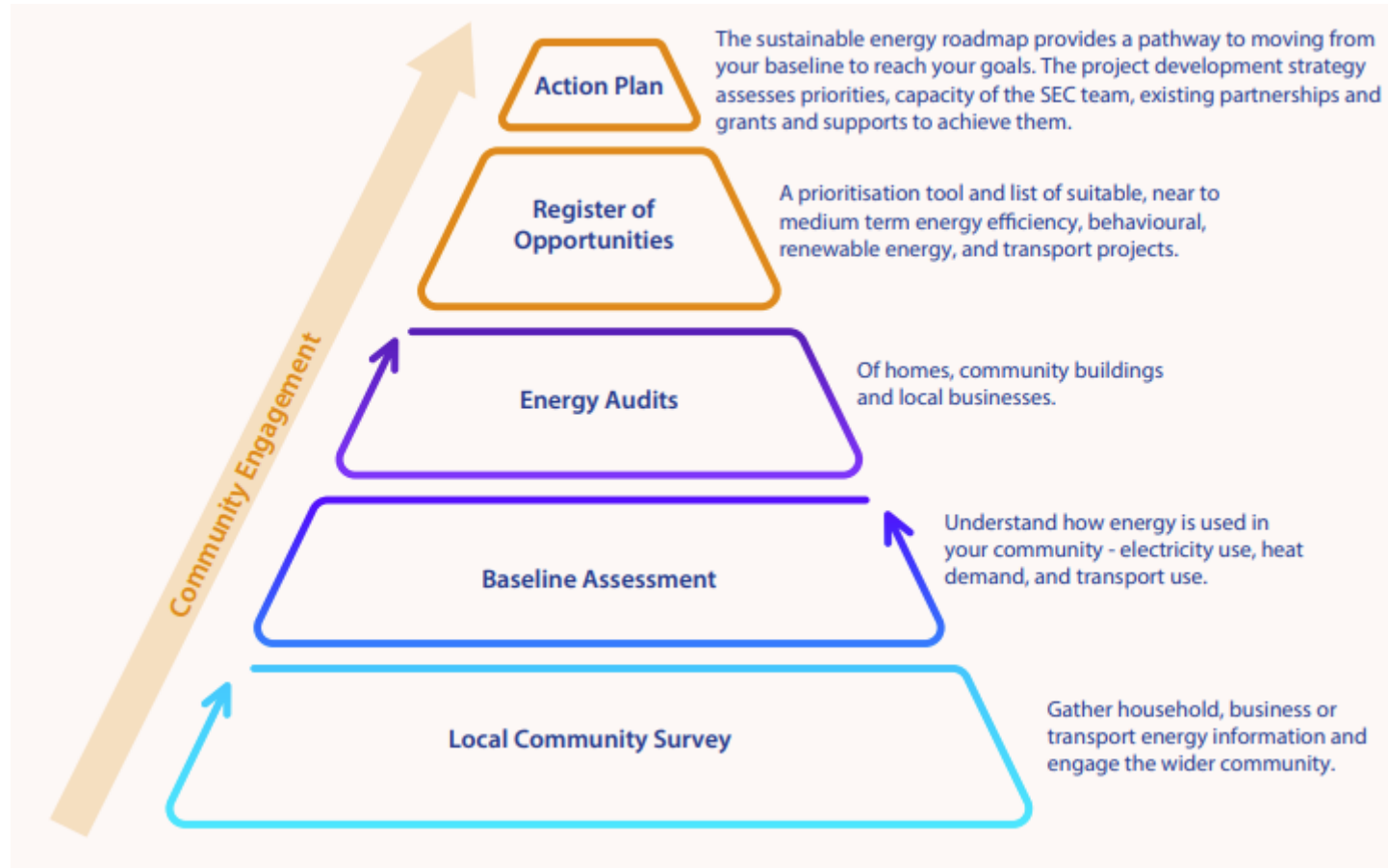
Plan Stage



- An Energy master Plan (EMP) helps communities:
- understand how energy is used locally through a comprehensive baseline assessment (electricity use, heat demand and transport use), across key sectors.
- identify and prioritise practical opportunities to measurably improve on this baseline.
- have a clear, near to medium-term action plan to avail of these opportunities and reach community goals.



Plan Stage



Plan Stage

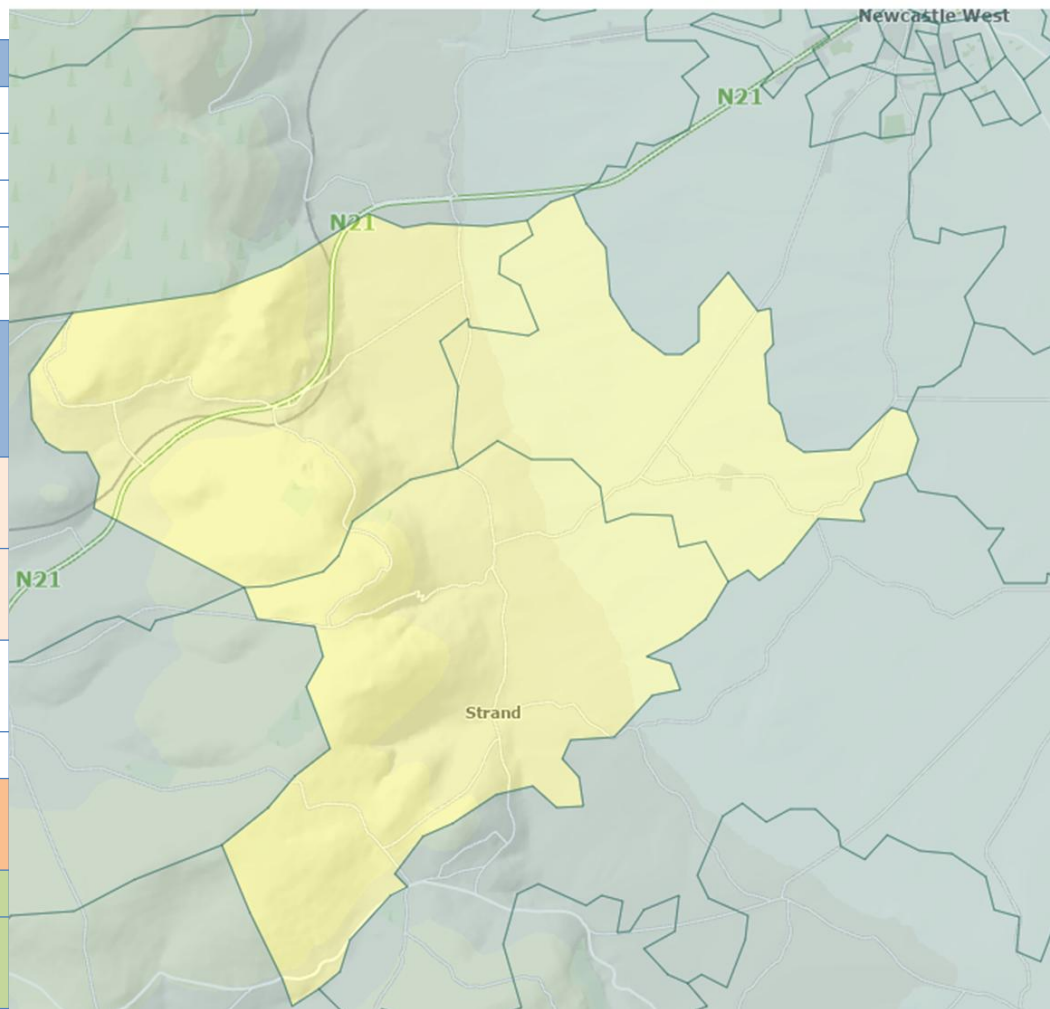


- SEAI will provide a 100% grant to cover the costs of an external consultant to work with an SEC to develop a community Energy Master Plan.
- The grant is retrospectively paid, is open for applications all year round, and ranges in value depending on the scale of SEC.
- 21 Local Authorities have signed up to advance funding for communities to aid in the preparation of the EMP.
- Application turn-around time is 1-2 months, and the grant offer is valid for 12-months.

Level 04	Large town, city, region, national Community Annual Energy Spend: Over €20,000,000
	EMP Funding €25,000
Level 03	Town, urban area Community Annual Energy Spend: Up to €20,000,000
	EMP Funding €20,000
Level 02	Village, small town, island Community Annual Energy Spend: Up to €2,000,000
	EMP Funding €15,000
Level 01	Street, small village, multi-unit development(s) Community Annual Energy Spend: Up to €500,000
	EMP Funding €10,000



Monagea SEC Area



Census 2022	Value
Population	896
Homes (total)	336
Homes (non vacant)	316
Cars	535

Estimate of annual energy spend for homes and cars	Value
Average spend for home energy	€3,600
Average spend for transport fuel	€2,300
Annual spend for homes (non vacant)	€1,137,600
Annual spend for cars	€1,230,500
Total annual energy spend homes and cars	€2,368,100
SEC Level	Level 3
EMP funding	€20,000

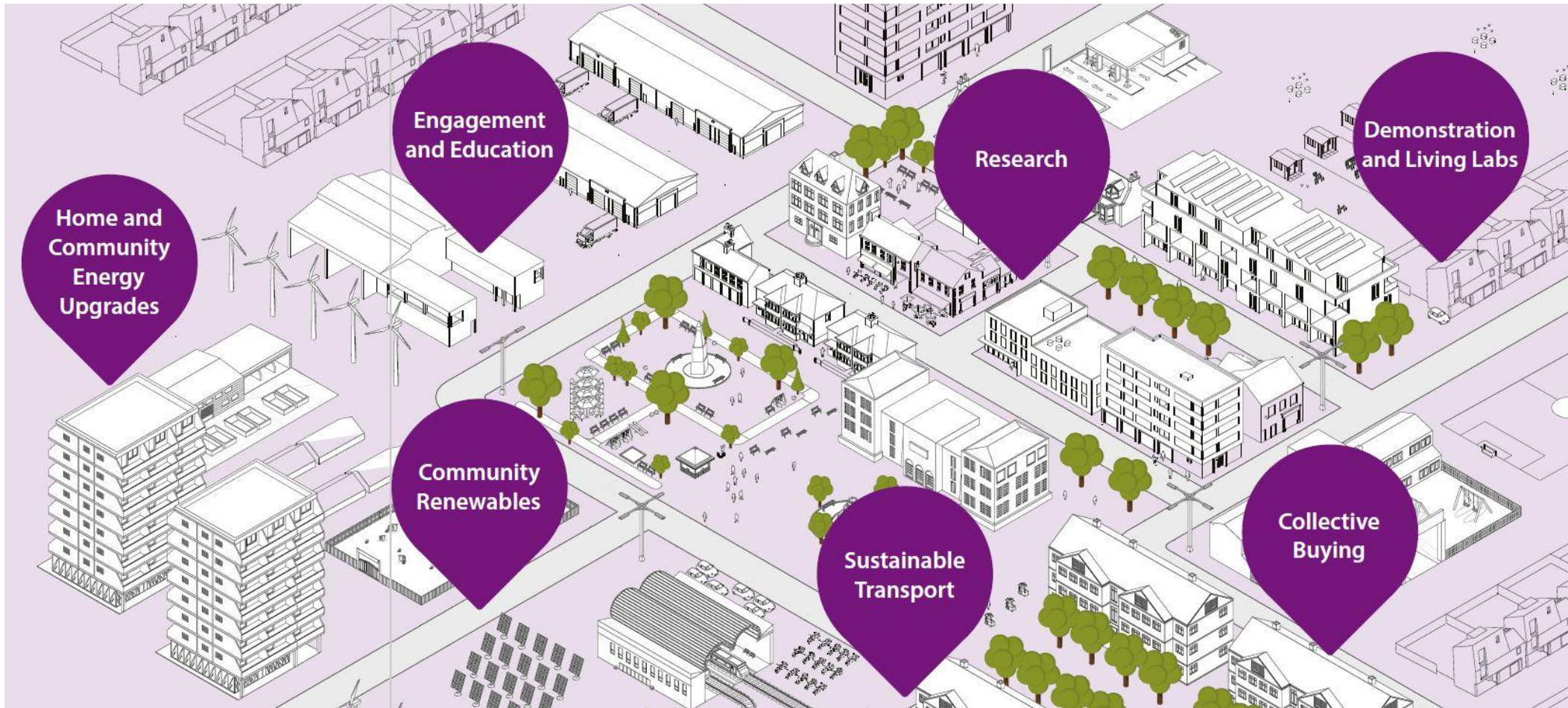
Estimate of annual energy spend for business	Annual spend	No. of	Total energy spend
Small business	€30,000	0	€0
Medium business	€80,000	0	€0
Large business	€120,000	0	€0
Total annual energy spend for business			€0

Total annual energy spend for SEC	€2,368,100
SEC Level	Level 3
EMP funding	€20,000



Pathways to Action

What are communities doing in the DO?



SEAI Grant Pathways – Home Energy Upgrades



Wexford SEC

WEXFORD TOWN
SUSTAINABLE ENERGY
COMMUNITY

wexford
local development
Hubbert Ashill Leah Gorman

Wexford
County Council

You may qualify for a 100% fully funded home energy upgrade

A fully funded home energy upgrade grant is offered by the Sustainable Energy Authority of Ireland, the government body tasked with upgrading energy efficiency in 650,000 Irish homes.

The Scheme aims to make homes warmer, healthier, easier to live in and cheaper to run. The value of your home may also increase with the upgrade.

You are invited to attend an information evening at St. Joseph's Community Centre, Wexford on **Tuesday 30th April 2024 from 8:15pm-10pm** where you can learn more about eligibility, why you should apply, and how to get started.

Warmer Homes Grant

- Working with Southend region of Wexford Town. Hosting local information evenings and 1:1 consultations with homeowners who qualify for the Warmer Homes Grant 100% fully funded. 100 application submitted in 2024 with close to 30 upgrades completed already.

Arklow SEC

ARKLOW INSULATION MEITHEAL

ARKLOW SEC

Do you want to lower your heating bills? Upgrading your attic and cavity wall insulation is the first step to a warmer home with lower costs. Join our insulation meitheal to avail of a shared service for people in Arklow.

1. COMPETITIVE PRICING
2. SHARED SERVICE
3. ADVICE & SUPPORT

REGISTER YOUR INTEREST

You can express your interest by filling out a google form using the QR code or join us in Arklow Library on the 27th of February at 7.00pm to learn more.

27th February 19:00
Arklow Library
Information Evening

Arklow SEC | secarklow@gmail.com

Insulation Meitheal

- Working with homeowners to upgrade attic, cavity or external insulation
- Group buying scheming to maximise the cost effectiveness for homeowner.
- The old Irish term 'Meitheal', signifies neighbours coming together to help in their community

Fivealley SEC, Offaly



- Solar Meitheal
- 58 homes within 10km radius
- Bord na Mona match funding to each SEAI grant- up to 4kW.

SEAI Grant Pathways – Community Building Upgrades



Cooley Peninsula SEC, Louth



SEAI Community Energy Grant

- 11 small bungalows and 1 community building were upgraded (building fabric and renewable energy generation). The homes were brought up from a D energy rating to a B2.

<https://www.youtube.com/watch?v=vcl3yKVJNzM>

The Yard Hub SEC



Abbeysrule, Longford

- Rural Regeneration & Development Fund, JTF, Longford County Council, Waterways Ireland.
- Redevelopment of a derelict 19th Century building to NZEB (Near Zero Energy Building) standards.

<https://youtu.be/o60fYMsDdpY>

Glinsk SEC, Galway



- Glinsk achieved a full retrofit and heating upgrade of the local community centre.
- The SEC raised over €350,000 through an innovative fundraiser with the first prize being a 6.4 kW Solar PV system with 10 kW battery storage.
- <https://www.youtube.com/watch?v=SxtqwD9VBkM>

<https://www.youtube.com/watch?v=SxtqwD9VBkM>

Grant Pathways – EU Projects



Triple SEC (Connecting Cabra, Cosybatter , Phibsboro Village SECs)



- European Commission Citizen Led Renovation
- Provides Triple SEC with holistic support from project management, ecosystem building, and business plan drafting to the technical design and community communication and engagement strategies. Development of a number of guide documents and pilot initiatives.
- e.g. Retrofit Walk and Talk Guide

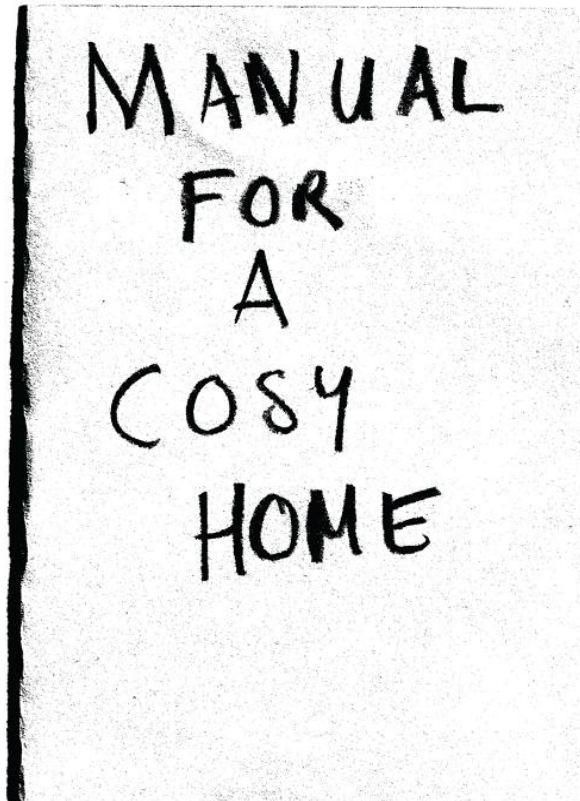
Midlands Renewable Energy Community

- EU JTP Groundwork: Enabling renewable energy communities in JTF regions from the bottom up
- Local impact to International Partnerships and collaboration
- Presented to JTP project to Irish Midlands Communities and
 - consortium of JT stakeholders, including communities, in the region of Łódź, Poland.





Creative Ireland Programme



Energy Saving:

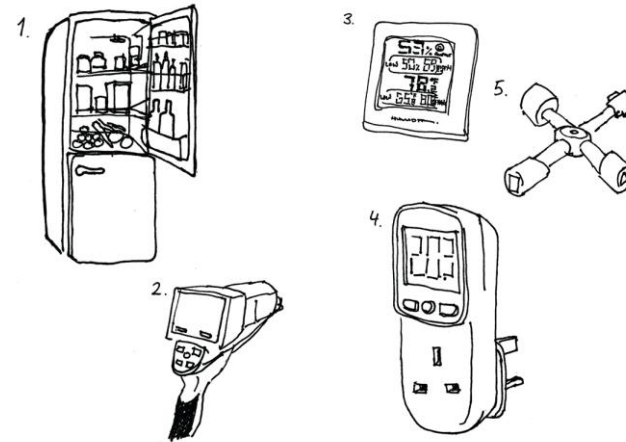
1. Solar Lights
2. Use Appliances At Night
3. Avoid Putting Fridges Against Wall
4. Switch Timer On Heating

Solar lights use energy from the sun to charge during the day and automatically turn on at night. By using solar lights, you can reduce electricity consumption because they don't rely on your home's power supply.

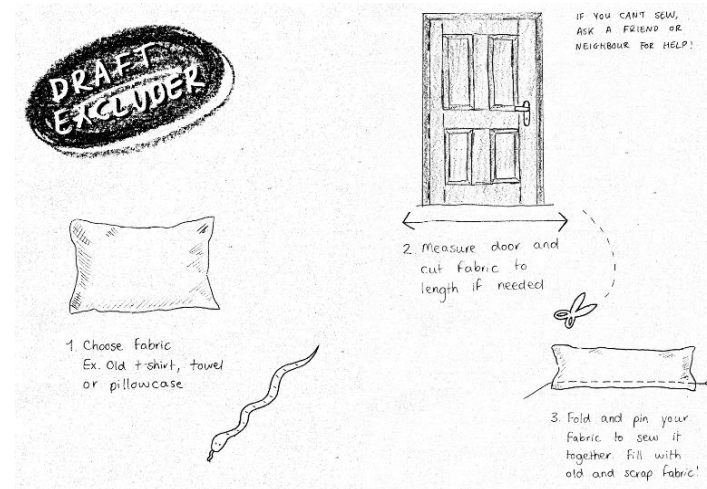
Some energy companies charge lower rates for electricity used during off-peak hours, typically at night. Running energy-hungry appliances like dishwashers, washing machines, and dryers during these times can lower your energy costs. It spreads out demand on the grid and takes advantage of cheaper rates.

Fridges need good ventilation to work efficiently. If you place a fridge too close to the wall, it blocks airflow, making the fridge's motor work harder to stay cool. This increases energy usage.

A timer on your heating system ensures that the heating is only on when you need it. Instead of running it all day, you can set it to turn on before you wake up or arrive home.



Creative Climate Action



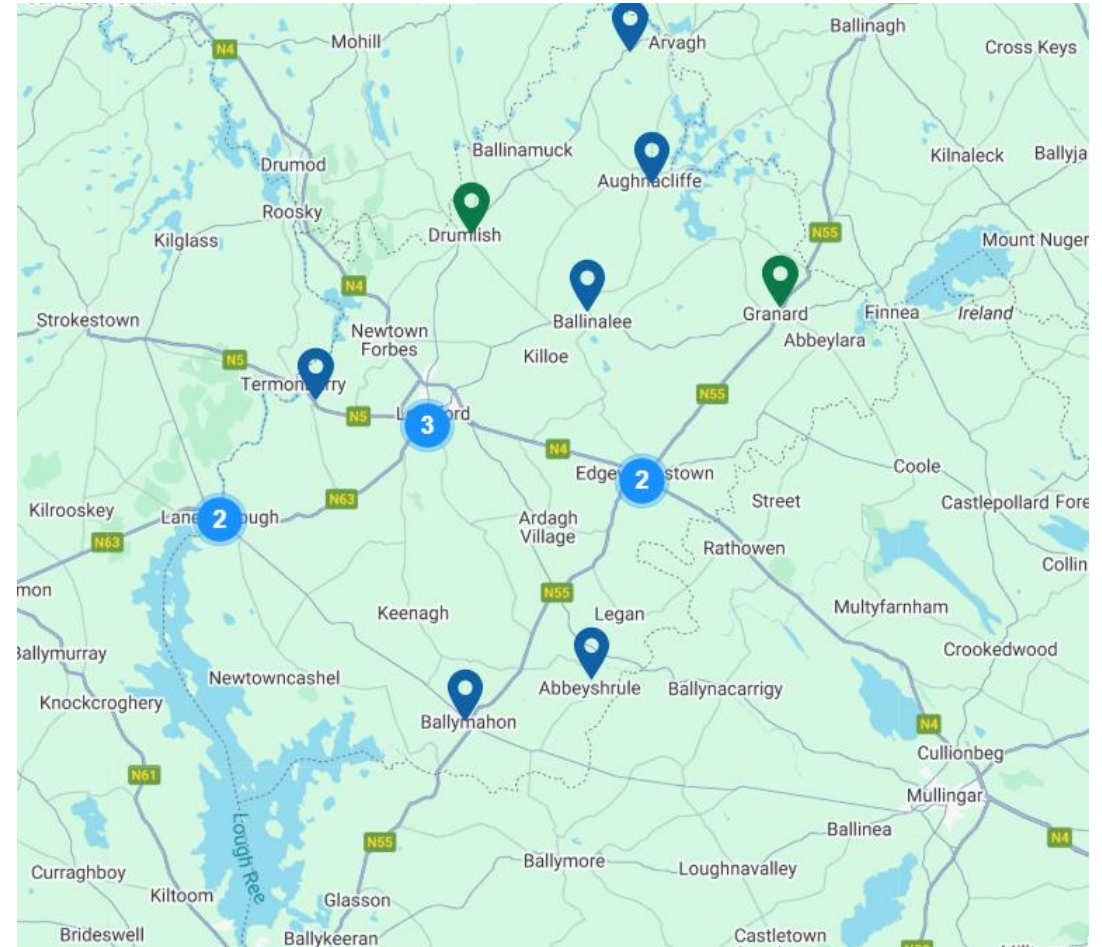
Context Studio
X
Connecting Cabra

<https://www.fromplantodo.ie/renters-booklet>

How to Join the SEC network



- Consider joining an SEC: Check the [SEC network map](#) to find a local SEC
- If nothing in place, start your own group and recruit like-minded people to join in your community.
- Register your community by filling out the [online application](#)
- Receive access to resources and supports to get your started.
- You will receive direct support from your dedicated SEAI mentor.
- Opportunity to learn from and engage with your peer network
- Search seai.ie/sec



Keep up to date



[SEC Newsletter](#)



Thank you for listening

