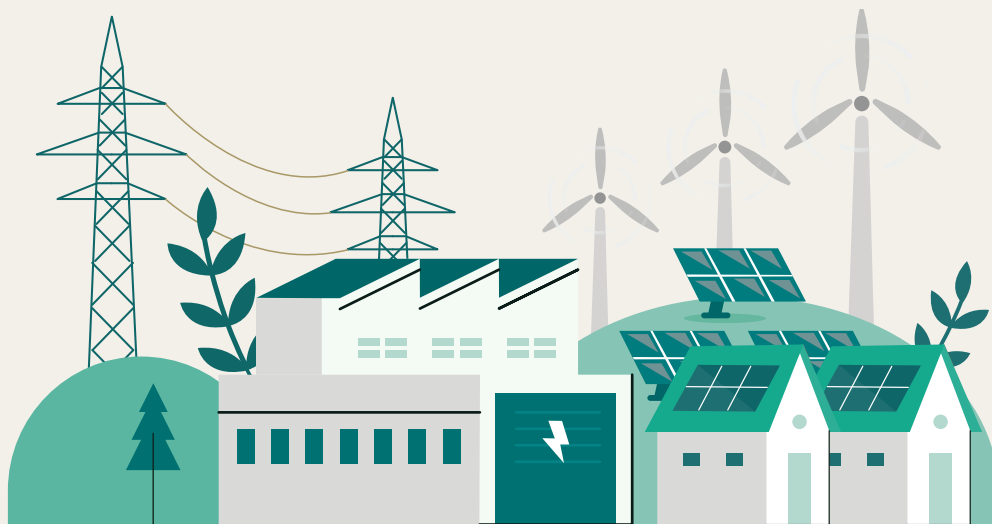


Central Dublin Substation Project Update

Have Your Say

Public Information





What is the Central Dublin Substation Project?

EirGrid manages Ireland's high-voltage electricity grid, which brings power around the country from where it's generated to where it's needed.

Central Dublin currently gets its power from existing transmission substations in Finglas, Ringsend and Inchicore. It is expected that these existing transmission stations will reach full capacity in the coming years.

Dublin's demand for electricity has grown and will continue to grow as we move to:

- using electricity for household heat pumps,
- supporting new residential and commercial developments,
- using more electric vehicles, and
- powering our public transport services.

To address this demand, a new transmission substation will be built, subject to planning permission, in East Wall, aimed for completion by 2030.

What is a substation?

An electricity substation is a key part of power grid infrastructure. It takes high-voltage electricity from power stations and reduces it to a safer, lower voltage. This allows the power to then be transmitted to homes and businesses. Substations help to control the flow of electricity, ensuring a safe and stable supply.



As part of our efforts to identify a suitable location, EirGrid examined a number of potential sites across this area.

This process involves a number of studies and assessments to determine which is the most suitable site. Some sites were either unsuitable or the relevant landowner had their own plans, so this site was chosen.

Project Benefits



Economic

Contribute to the regional economy and support increased investment in the area.



Community

Deliver community benefits in the areas that facilitate the project infrastructure.



Local

Helping to meet increasing local transport, employment and housing requirements.



Competition

Apply downward pressure on the cost of electricity.



Sustainability

Help Ireland's transition to a low carbon energy future.



Security of supply

Improve security of electricity supply across the island of Ireland.



What is happening now?

EirGrid held three information events in the East Wall area in June 2024 to present the proposals to the community. Throughout these sessions, we collected valuable feedback from you regarding the appearance of the station, the impact of the substation on the general environment, safety, and concerns about noise levels.

In June 2024, EirGrid published the Best Performing Option for an electricity substation in the East Wall area.

Later this year, EirGrid will apply for planning permission for the Central Dublin Substation. Before we do this, we are seeking your observations into the final design features.

This booklet outlines the changes that have been made to the proposals following that feedback. It also contains concept illustrations showing the boundary wall treatments and the cladding options being considered by EirGrid.

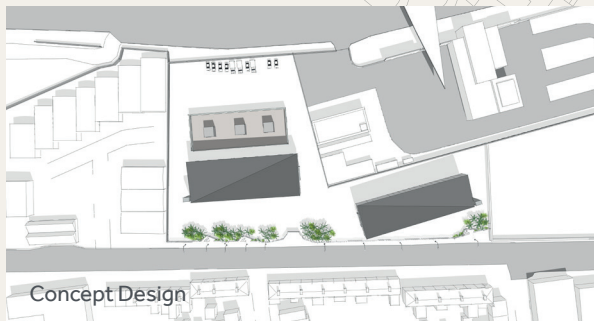
The deadline for feedback is Wednesday 9th of July. Information on how you can make a submission can be found at the end of this document.

Taking Action: Designing for Everyone

EirGrid strictly follows all best practice international guidelines to ensure the infrastructure we deliver is safe for people who may be living or passing nearby.

We have taken your feedback into account and where possible have addressed the issues that were raised during our engagement with the community.

We are now working to finalise the design, and are considering a number of options. These options are presented in the following sections.

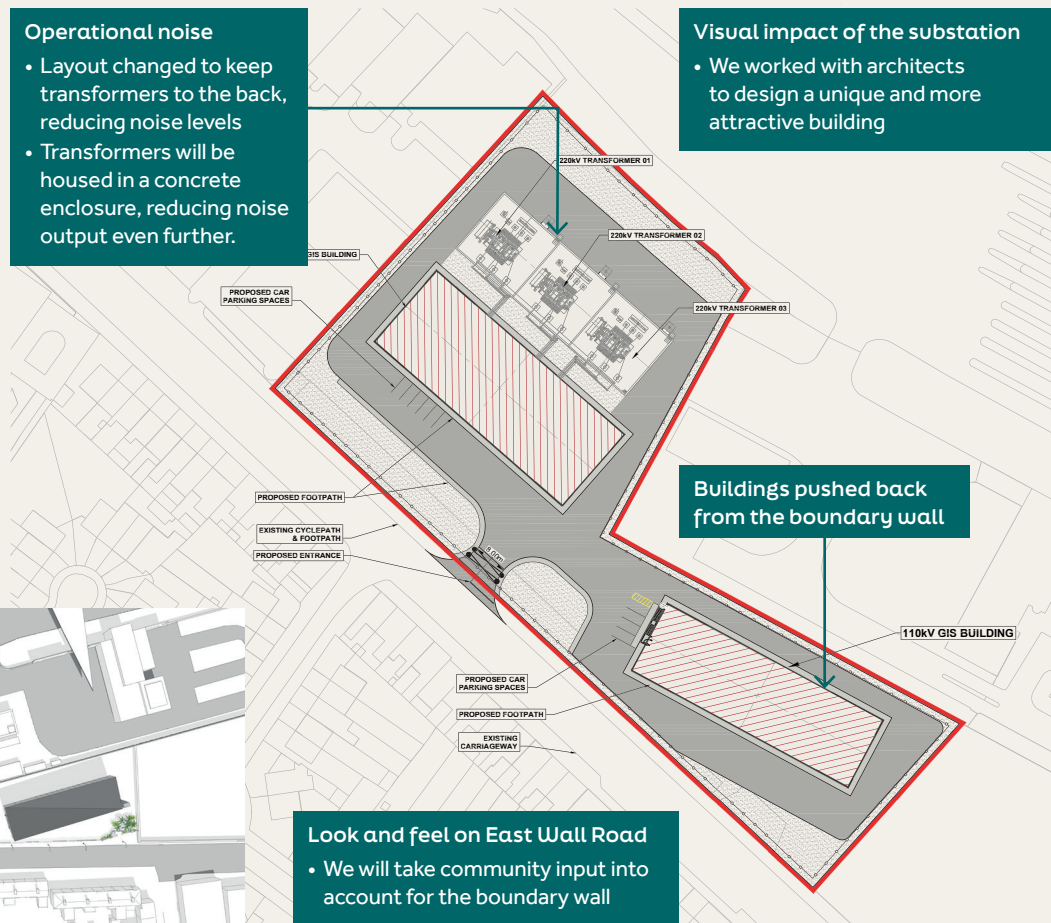


Operational noise

- Layout changed to keep transformers to the back, reducing noise levels
- Transformers will be housed in a concrete enclosure, reducing noise output even further.

Visual impact of the substation

- We worked with architects to design a unique and more attractive building



Look and feel on East Wall Road

- We will take community input into account for the boundary wall

A Shared Vision: The Final Design

EirGrid recognises the importance of the communities that host our infrastructure. Before we submit the final design for planning, we want to get your opinion on some of the visual features of the Central Dublin Substation, to take into account in our ongoing design process with ESB Networks and Dublin City Council.

At the end of this brochure you will find a feedback form that you can send to EirGrid free of charge with your observations.

The following pages detail some of the options being considered by EirGrid for the final station design.

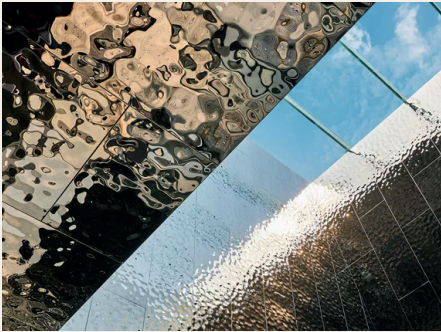
These include:

- **Cladding options for the two substation buildings**
- **Features and treatments for the boundary wall and public realm space on East Wall Road**
- **Community art project proposal**

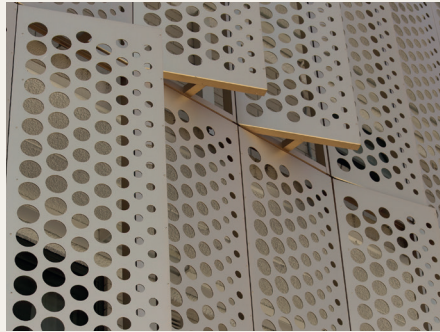


Concept Design

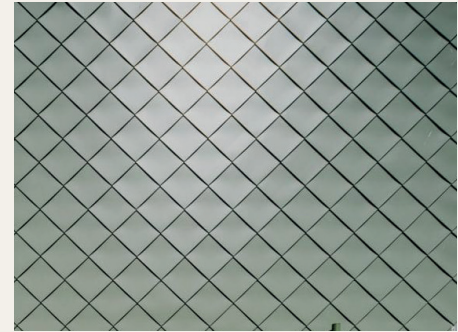
Materiality



Stainless Steel Ripple Sheets



Perforated Aluminium



Zinc

Reference Projects



CTLES Bussy-Saint-Georges, Paris
Stainless Steel



Larkin Street Substation, San Francisco
Perforated Aluminium Panels



Heatworks Energy Centre, Tallaght, Dublin
Zinc

Boundary Treatment

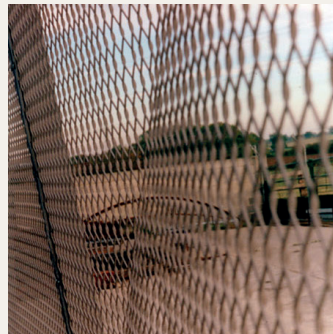


Concept Design

Reference Images



Corrugated Metal



Mesh



Bladed Fin Fencing

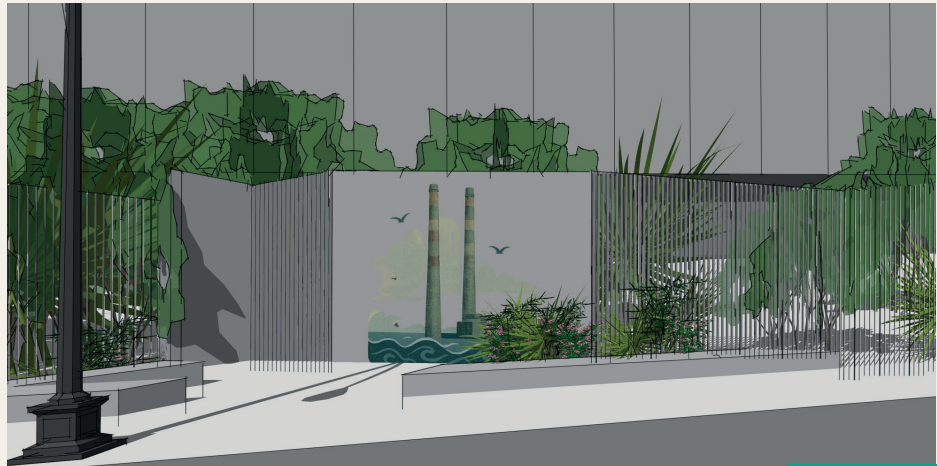


Aluminium

Community Art Project

In addition to the above options, another suggestion was to include a space along the boundary wall to host a community art project. EirGrid will work to determine a suitable project alongside local services, youth projects, artists, and community groups to develop a collaborative and meaningful art piece, if this is what the community decide.

Community art projects give communities a voice, allowing residents to visually express shared experiences, identities, and hopes for the community.



Concept Design

Uisce Eireann Community
Art Project, Athlone



What happens next?

Information Events

EirGrid will hold drop-in information events in the Sean O'Casey Community Centre over the course of this consultation. This will provide an opportunity for us to present this information to you in person and to provide an opportunity for you to speak to members of the project team.

The dates of these events are as follows:

Thursday 26th June 4pm-8pm

Monday 30th June 11am-3pm

Friday 4th July 11am-3pm

You can also drop in to meet our Community Liaison Officers, Liz Dillon and Stephen Quinn at our informal community liaison clinic on 9th July 11am-2pm. You don't need an appointment to attend.

Your feedback will be taken into account along with feedback from the local authority and other stakeholders. Once all of this feedback has been collated, EirGrid will complete the design for the Central Dublin Substation. We will apply for planning permission later this year, it is envisaged that construction will begin in 2027.

Have Your Say

We would like to hear your feedback on the proposed design options outlined in this brochure. **The deadline for submitting your feedback is Wednesday 9th July.** You can make a submission to the consultation and provide feedback in a range of ways.

- Via feedback form at one of our in-person information events
- By FreePosting the enclosed feedback form
- Via email to Dublin@EirGrid.ie

If you would prefer to make a more detailed submission by FreePost, our address is:

Central Dublin Substation Project
FREEPOST FDN 5312
EirGrid PLC, The Oval
160 Shelbourne Road
Dublin 4, D04 FW28

If you have any further queries please contact our dedicated Community Liaison Officers.



Liz Dillon
Community Liaison Officer
Liz.Dillon@eirgrid.com
087 188 7982



Stephen Quinn
Community Liaison Officer
stephen.quinn2@eirgrid.com
087 001 8084

June/July 2025 – final consultation

Summer 2025 – planning
permission application

2027 – Construction begins
(subject to planning)

Community Benefit Fund opens

2027 - 2030 – Construction completed

Feedback Form

Please return this postcard before 9 July to have your say.

Which of the proposed cladding materials would you most like to see being used for this project?

Would you be in favour of including a community art project on the boundary wall?

☐

Yes

☐

No

☐

Unsure

Do you have any observations on the proposed boundary treatment?

Do you have any general comments or feedback on the Central Dublin Substation Project?

Central Dublin Substation Project
FREEPOST FDN 5312
EirGrid PLC, The Oval
160 Shelbourne Road
Dublin 4,
D04 FW28

