



EirGrid Customer Connections Forum

Thursday 24th November 2011

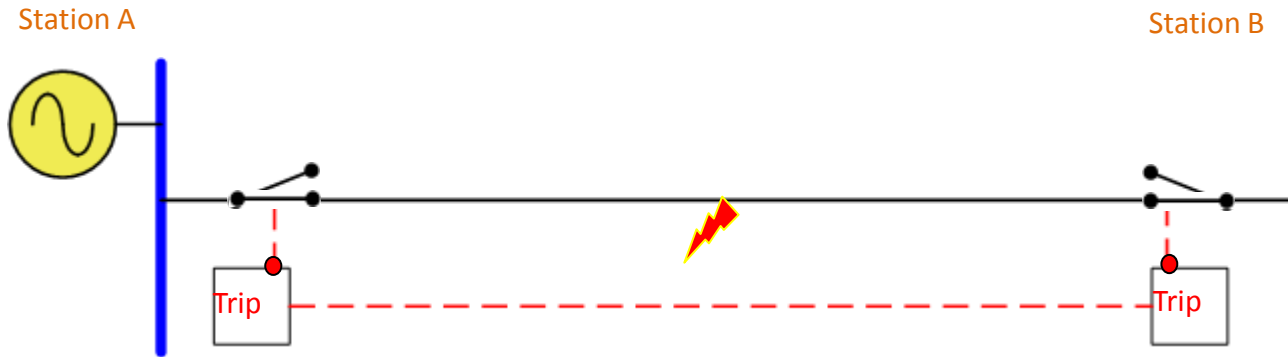
Short Circuit Reinforcements Review

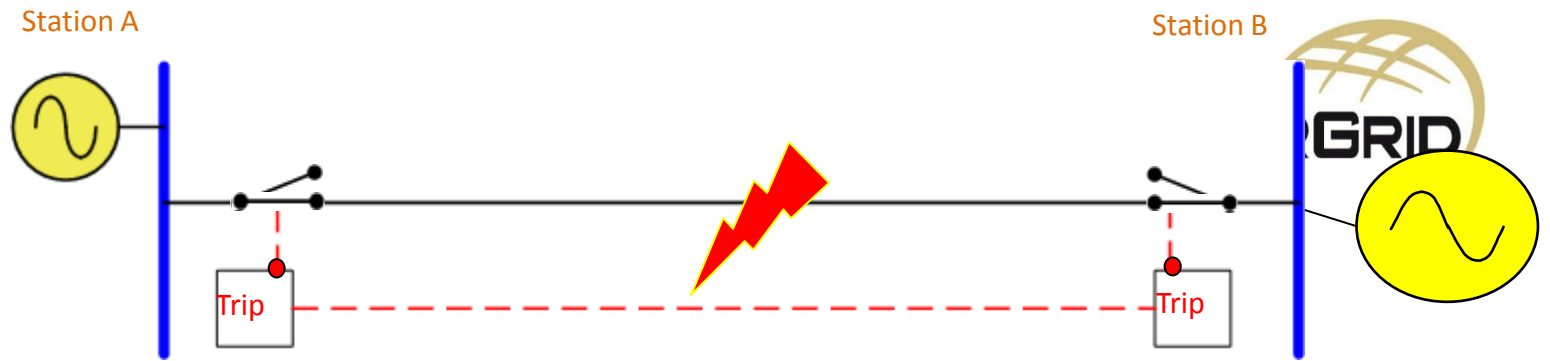
Cormac McCarthy
Transmission Access Planning

Overview

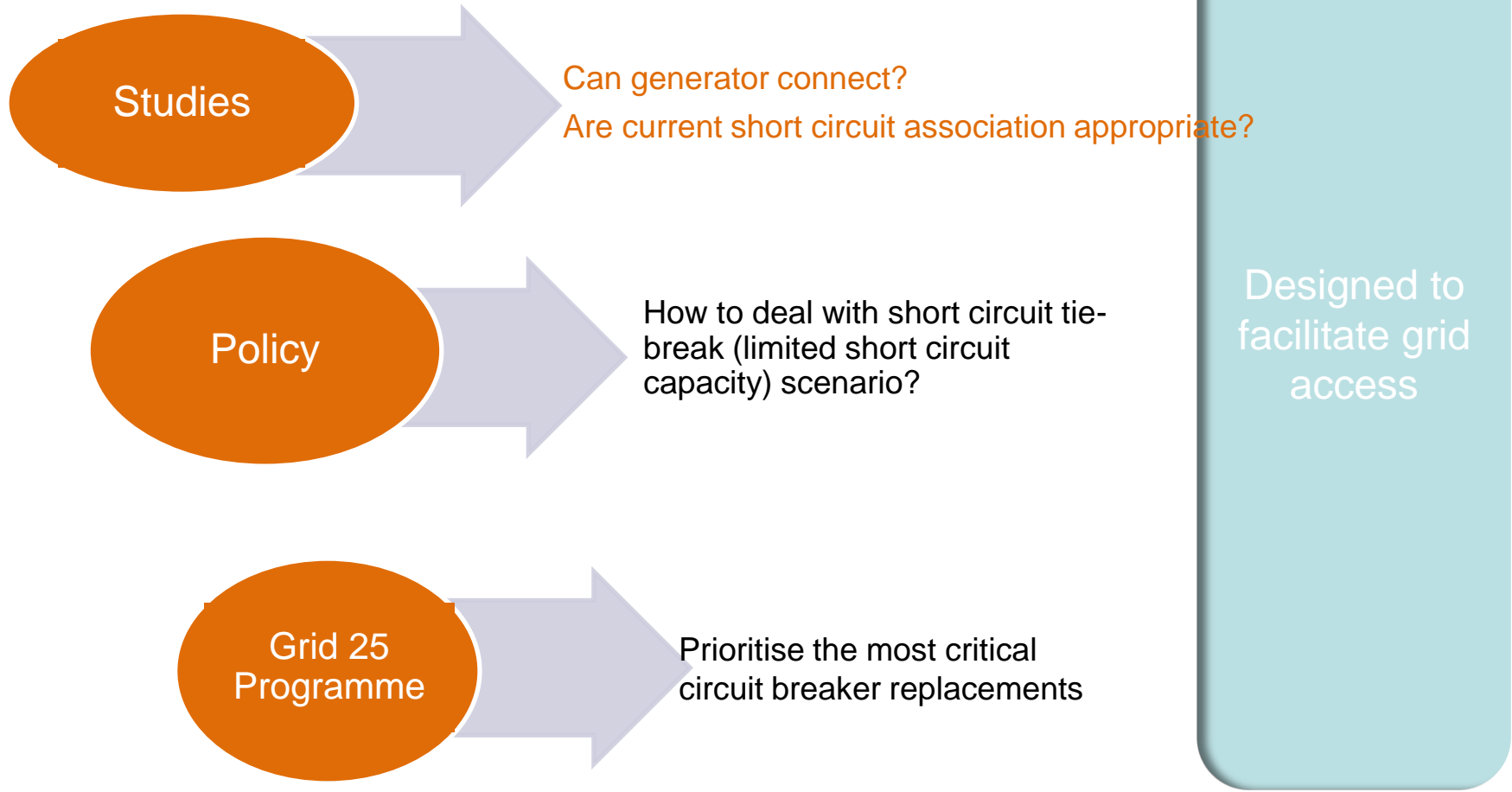


- Recap
 - What is a short circuit and why it is relevant to generators
 - Why review short circuit reinforcements
- 3 key strands
- Progress to date
- Next steps





3 Key Strands to the Review



Studies - Process



- Annually model actual expected generator connection dates
- 2 – 4 year view
- Will consider interim operational workarounds. If operational workaround not feasible then connections delayed
- “Early warning system”
 - Approval for Energisation
- Key input - forecast generator connection dates

Studies - Progress to date



- Wrote to customers
- Compiled list of expected connection dates
- Met with some individual customers

- Performed studies
 - 290 generators – 7500 MW
 - In 2012 – 42 generators – 920 MW

Studies - Progress to date (cont'd)



- Identified short circuit issues over the next few years
- Progressing capital approvals
- For 2012, there are some potential issues
- Reviewing whether operational workarounds are acceptable

Policy – Short Circuit Tie Break



- Who to allow to connect if limited short circuit capacity
 - Those with a recent connection agreement but otherwise able to connect versus those with a long standing connection agreement but not due to connect for a number of years
- Policy needs to be transparent & objective

Grid 25 programme



- Goal is to avoid delaying connections by identifying binding short circuit issues and circuit breakers that must be replaced to overcome these
- Recognise finite annual capability to replace circuit breakers due to outage considerations
- Endeavouring to prioritise the most important circuit breakers first

Next Steps



- Continue to progress reinforcement projects
- Finalise review of 2012
- Write to 2012 connecting generators (Q4 2011)
- Short circuit tie-break policy proposal (Q1 2012)
- Review post 2012
- Communicate post 2012 findings (Q1 2012)

Summary



- Annual Review
 - 2 – 4 year outlook
- This study
 - Write to 2012 connecting generators (Q4 2011)
 - Communicate post 2012 findings (Q1 2012)
- Importance of accurate forecast connection dates



Thank you