



# East Meath-North Dublin Grid Upgrade

Capital Project CP1021  
Step 4 Consultation  
7 September 2022 to 30 November 2022



East Meath-North Dublin Upgrade - Step 4 Consultation

## East Meath - North Dublin Grid Upgrade

### Step 4 Consultation Overview

Community Forum Meeting #2  
6 September 2022





# Introduction to EirGrid

- EirGrid operates and develops the electricity grid in Ireland. We send power from where it is generated to where it is needed.
- We are owned by the Irish Government, and we are a regulated utility. This means we operate solely for the benefit of the electricity user.
- We do not generate electricity – we bring it from generators across the grid. We also operate some interconnectors with neighbouring electricity grids.



# Introduction to EirGrid

- We run the wholesale electricity market. This ensures electricity is always available at the most economic price possible.
- We do not own the electricity grid, and have no vested interest in adding to it.
- We only upgrade or add to the grid in response to government policy, or where it is an essential response to secure Ireland's electricity supply.

# What is the East Meath-North Dublin Grid Upgrade

## The East Meath-North Dublin Grid Upgrade:

Will add a high-capacity 400 kV underground cable electricity connection between Belcamp Substation in Dublin and Woodland Substation in Meath;

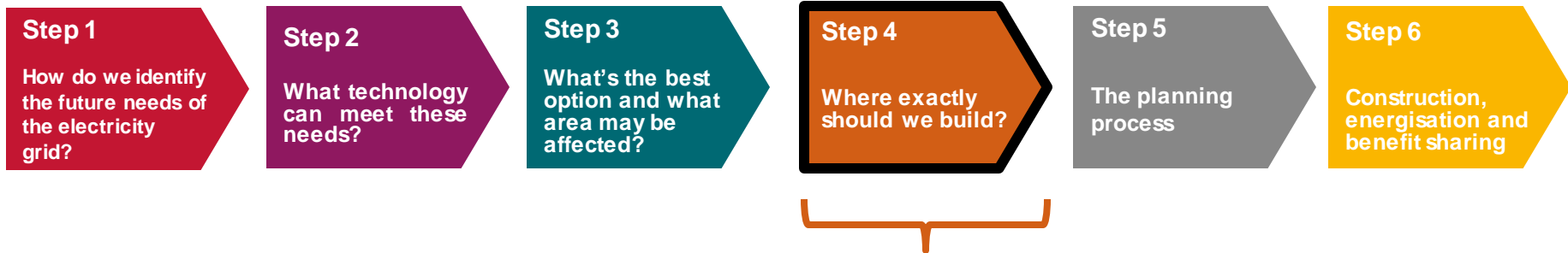
Will strengthen the electricity network in the east of Meath and the north of Dublin to improve the transfer of power across the existing transmission network.

## We need to upgrade and strengthen the network to:

- address the increased electricity demand in east Meath and north Dublin due to economic development and population growth,
- reduce the use of and reliance on fossil fuels for electricity generation,
- facilitate further development of renewable energy generation, onshore and offshore, and;
- assist in achieving climate action targets of having up to 80% of electricity coming from renewable sources by 2030.

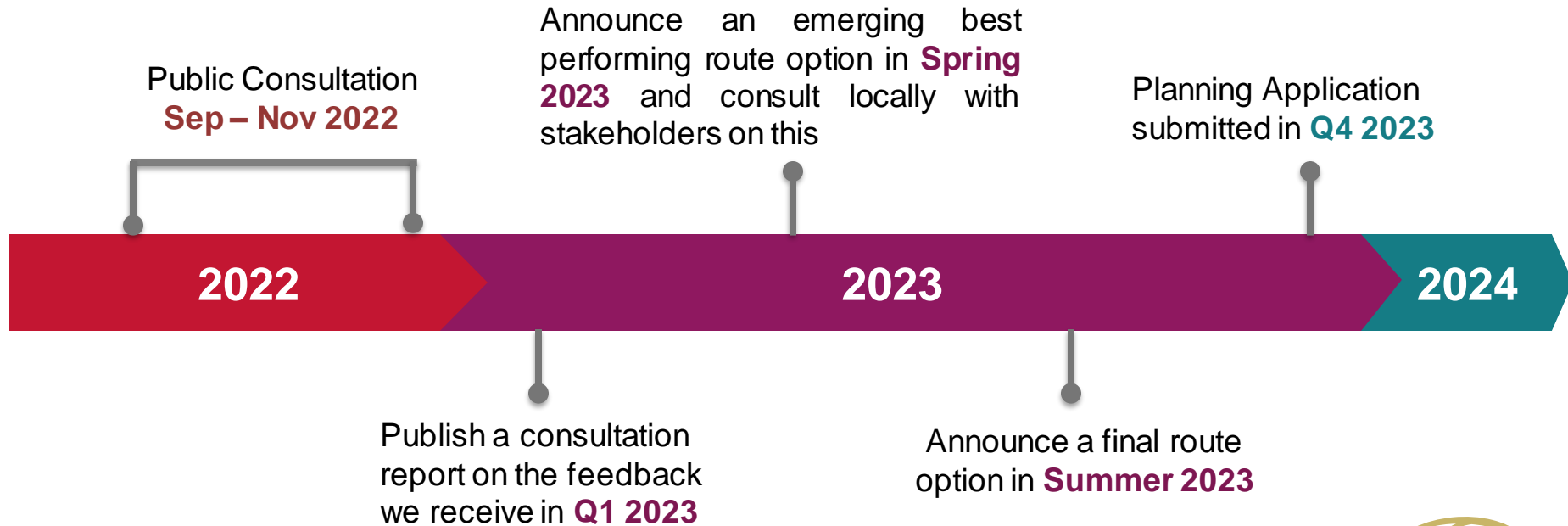


# What step is the project at?



We are inviting you to give feedback on the **four** route options

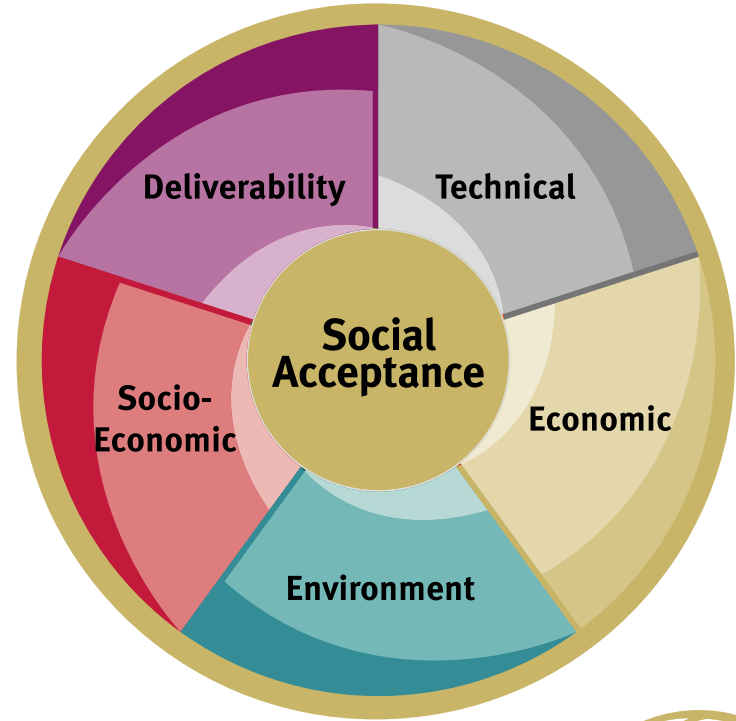
# What will happen in Step 4?



# Step 4 Studies

We are doing further investigations and assessments which build on those we completed in Steps 1, 2 and 3.

We are assessing and comparing the route options during these investigations under five categories



# How do we plan route options?

- | Avoid motorways, and maximise the use of national, regional and local roads being cognisant of the width and quality of the road;

- | Avoid town centers and industrial estates and minimise impact on communities where possible;

- | Avoid going off-road, through private land and through agricultural land where possible;

- | Avoid sensitive natural and built heritage locations including protected areas;

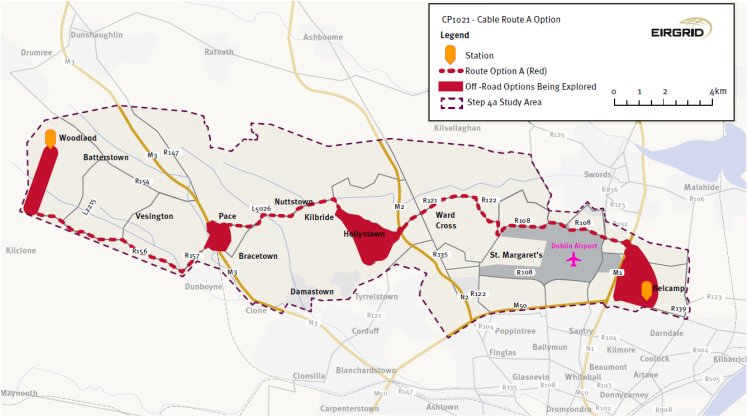
- | Avoid clusters of other services in the road such as water, gas and drainage;



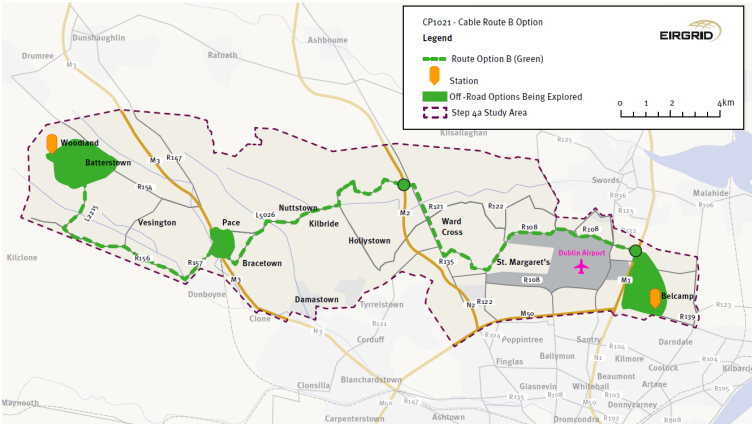
# Common to all routes

- All route options:
  - Start from Woodland substation
  - Travel to Belcamp substation
  - Cross a motorway: M1, M2, M3
  - Have off-road corridors
- Further route options could be considered by combining sections of each of the proposed routes.

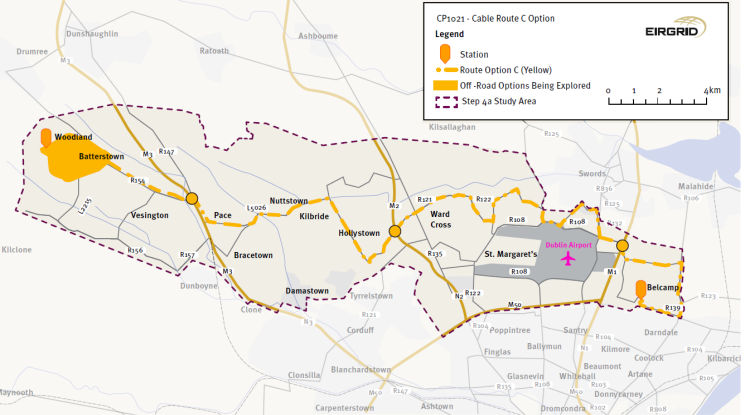
# Option A (Red)



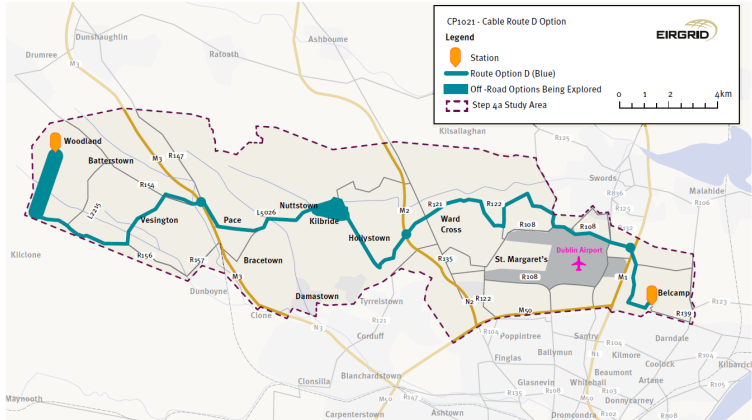
# Option B (Green)

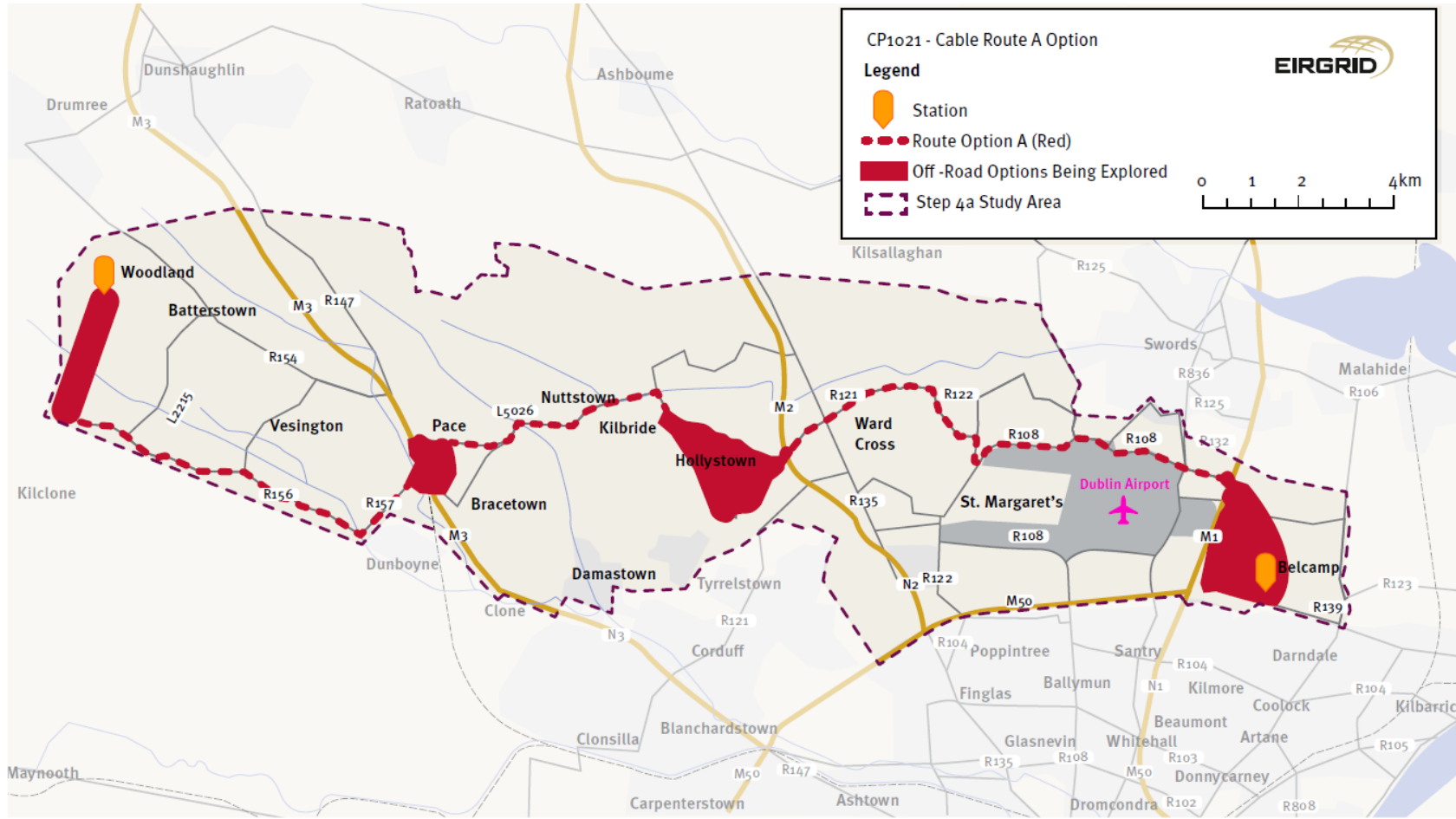


# Option C (Yellow)



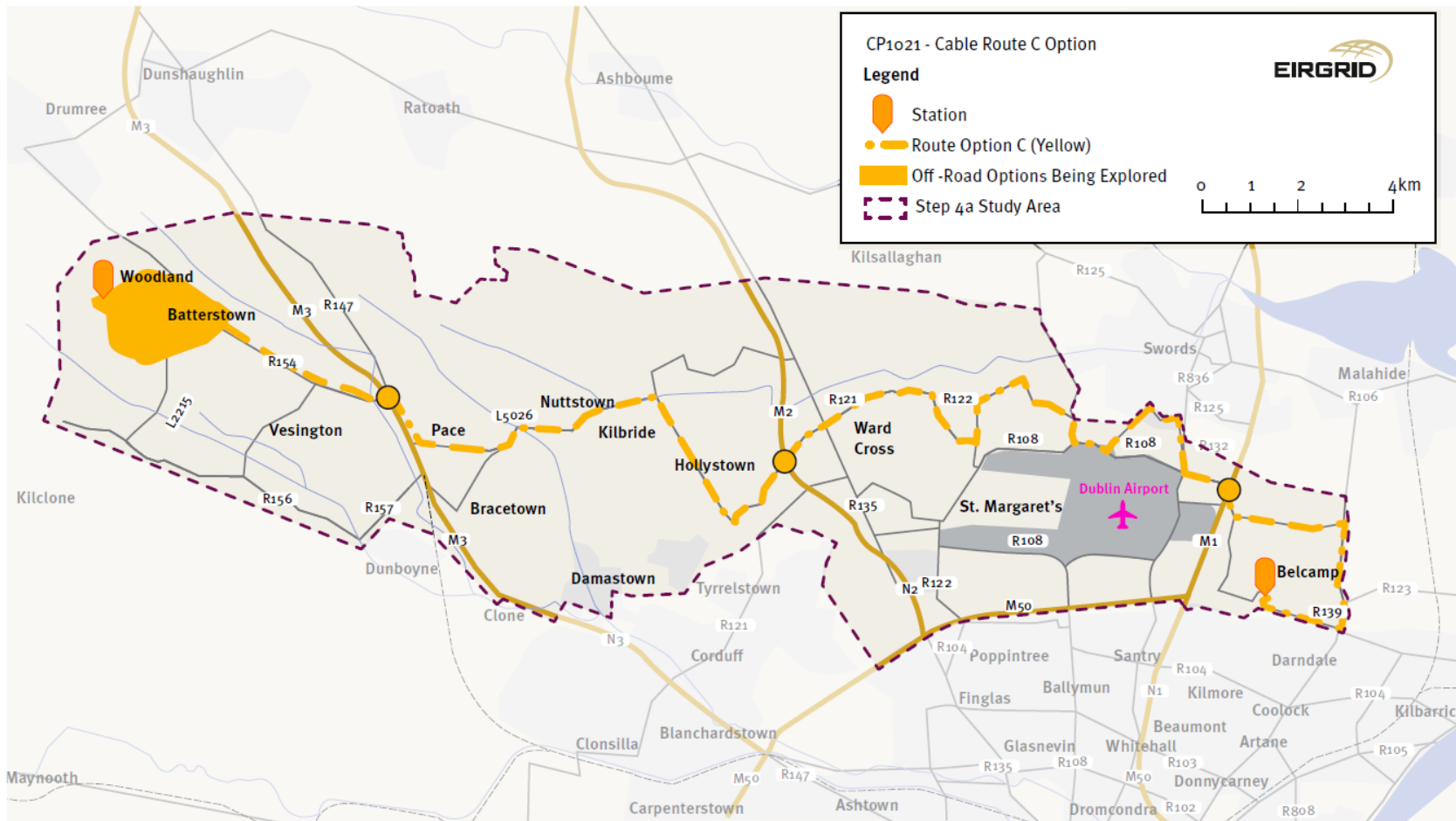
# Option D (Blue)



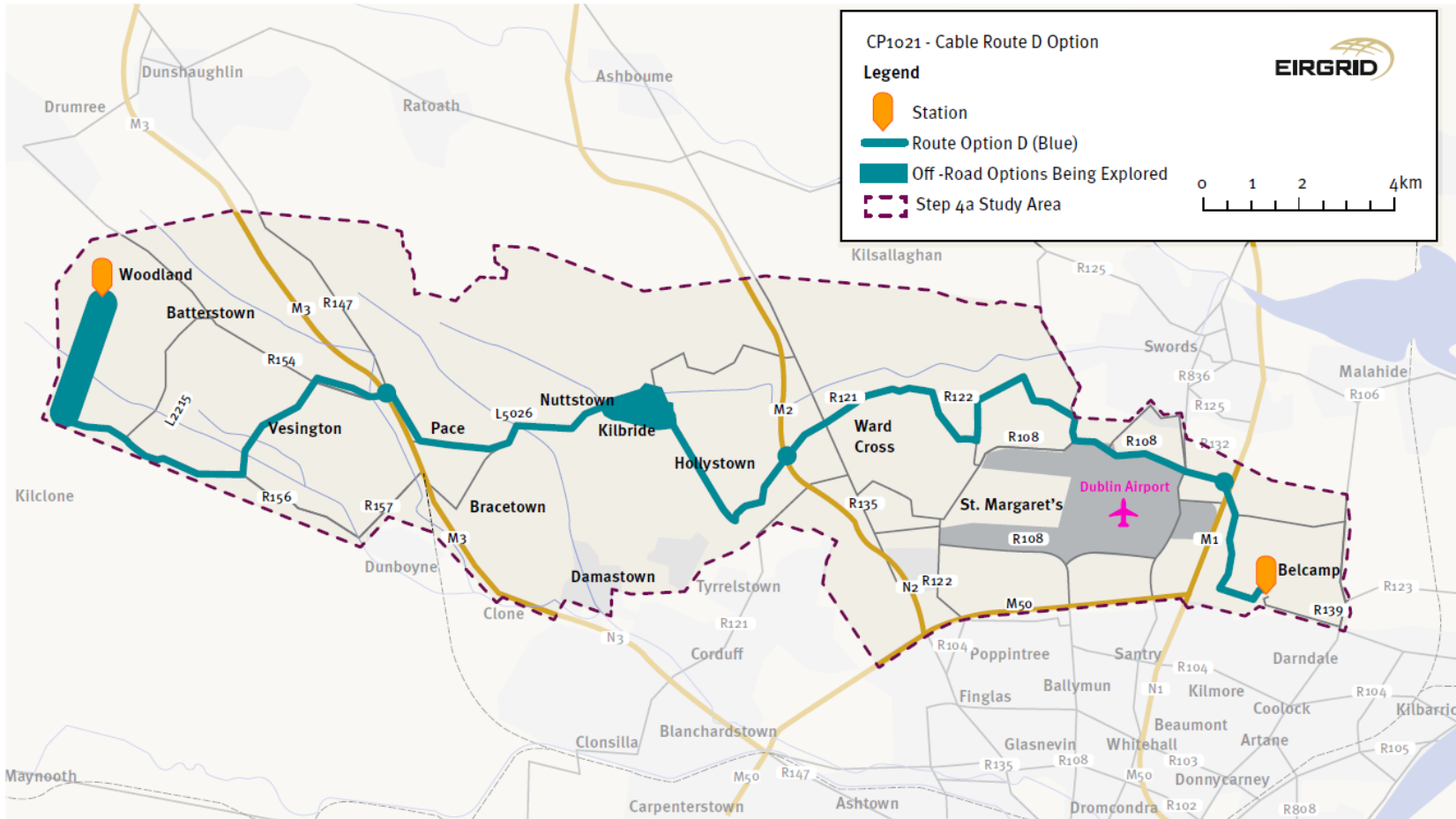


Option A  
(Red)



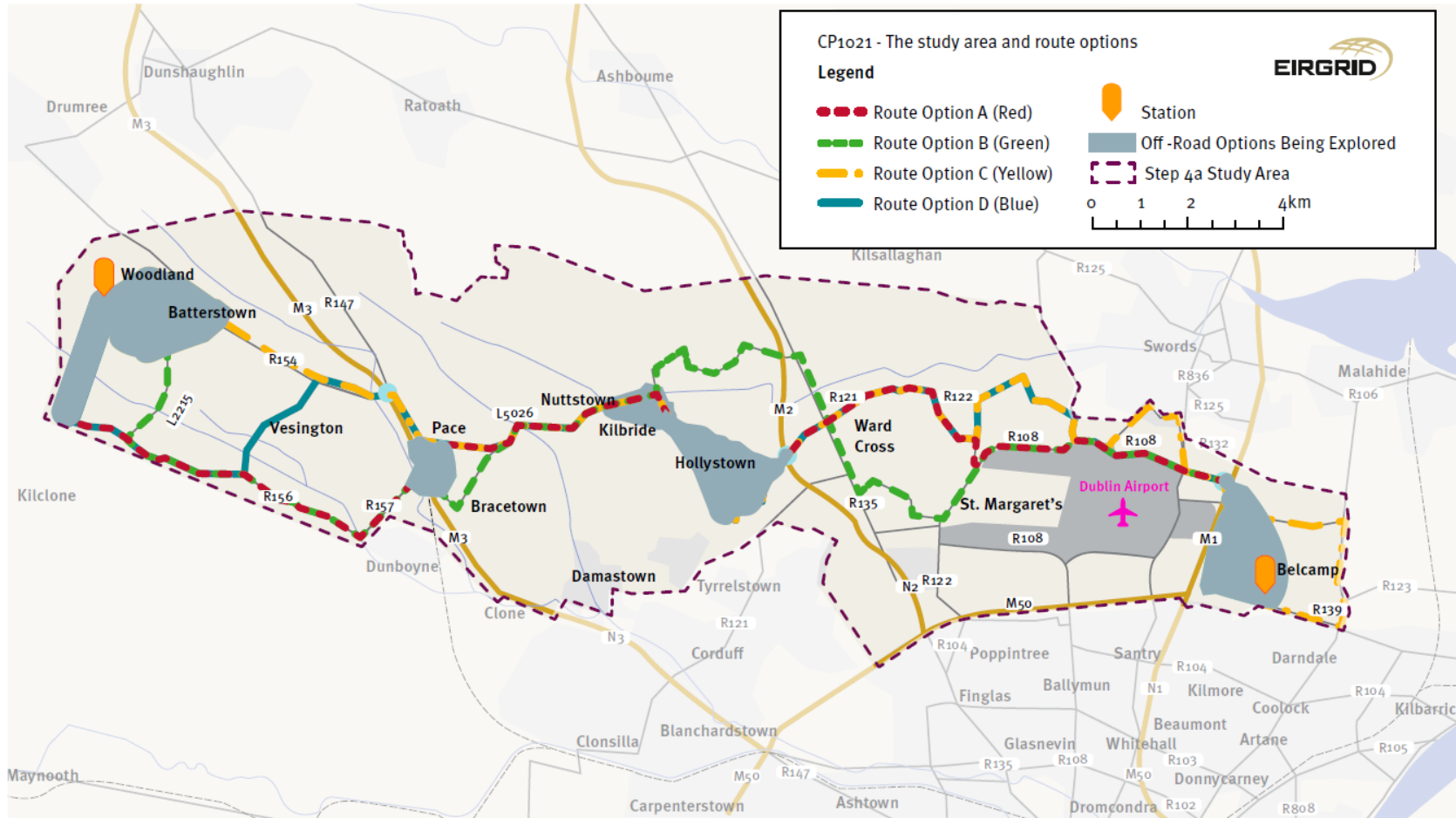


Option C  
(Yellow)



Option D  
(Blue)





All Route Options

# Overview of proposed route options

Option	Estimated overall length (km)	Estimated off-road sections (km)	Environmental impact	Social impact and potential disruption during construction	Other points
Option A (Red)	37	9	Low-Moderate	Low-Moderate	Shortest route but affects the most amount of agricultural land of all options.
Option B (Green)	38	7	Low-Moderate	Low-Moderate	Second shortest route and avoids Hollystown.
Option C (Yellow)	43	2	Moderate	Moderate	Longest route. Goes through Batterstown village and southern suburbs of Swords. Least agricultural land.
Option D (Blue)	41	4	Low-Moderate	Low-Moderate	Second longest route length, second lowest amount of agricultural land. Avoids Kilbride village.

# What does underground cabling look like?



Figure 1



Figure 2



Figure 3



Figure 4



Figure 5

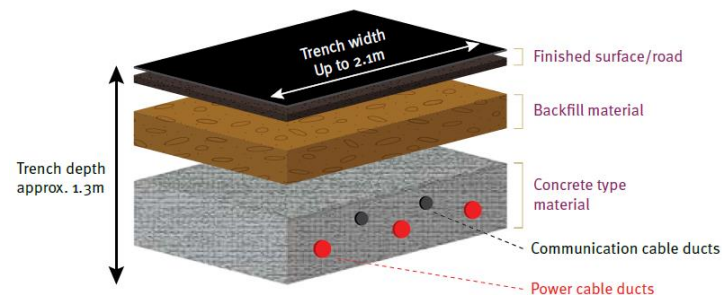


Figure 6



# Typical Road Reinstatement

# What benefits is this project facilitating?

## Benefits of the East Meath-North Dublin Grid Upgrade



### Competition

Apply downward pressure on the cost of electricity.



### Sustainability

Help facilitate Ireland's transition to a low carbon energy future.



### Security of Supply

Improve electricity supply for Ireland's electricity consumers.



### Economic

Contribute to the regional economy and support foreign direct investment.



### Community

Deliver community benefit in the areas that facilitate the project infrastructure.



We're getting ready to upgrade your electricity grid and want to hear what you think.



# Communications and Engagement

- 12-week consultation from 7 Sept - 30 Nov 2022
- 4 Route Options: **Red Green Yellow Blue**
- All advertising, engagements & communications will point to 2 central locations where all content will be published:
  - Consultation portal: **[consult.eirgrid.ie](https://consult.eirgrid.ie)**
  - EirGrid Website: **[eirgrid.ie/eastmeathnorthdublin](https://eirgrid.ie/eastmeathnorthdublin)**

## Ways to Have Your Say:

- [Consult.eirgrid.ie](https://consult.eirgrid.ie) to host all submissions
- Free post questionnaire delivered to residents within study area (circa 12K)
- Project email address [EastMeathNorthDublin@eirgrid.com](mailto:EastMeathNorthDublin@eirgrid.com)
- Traditional post (freepost)



# Consultation Activity Overview



# Submit Your Feedback



- Make a submission or complete the questionnaire at: [consult.eirgrid.ie](https://consult.eirgrid.ie)



- Send an email to [EastMeathNorthDublin@eirgrid.com](mailto:EastMeathNorthDublin@eirgrid.com)



- Send your submission by post:  
**East Meath North Dublin Grid Upgrade,  
EirGrid, Freepost FDN 5312,  
160 Shelbourne Road,  
Ballsbridge, D04 FW28**

- **Contact your Community Liaison Officer:**  
**Eoghan O'Sullivan 087 2477732**





Thank You