

EMT Model Specification BESS PPM

Version 1.0

July 2025



The Oval, 160 Shelbourne Road, Ballsbridge, Dublin D04 FW28
Telephone: +353 1 677 1700 | www.eirgrid.com

Contents

1. Introduction	5
1.1. Scope & Purpose	5
1.2. Abbreviations.....	6
2. Intended Use	7
2.1. Context.....	7
2.2. Studies	7
2.3. Model	7
3. Components	8
3.1. Plant Specific.....	8
3.2. Electrical Components of the Plant	8
3.3. Control and Protection of the Plant	8
3.4. Co-located (hybrid) Sites	10
4. Structure	10
4.1. Model Structure Requirements.....	10
4.2. Requirements for Layer 1.....	10
4.3. Requirements for Layer 2.....	10
4.4. Requirements for Layer 3.....	11
4.5. Additional requirements for all Layers	12
4.6. Co-located (hybrid) Sites	12
5. Accuracy	13
5.1. System Accuracy	13
5.2. Electrical Components Accuracy	13
5.3. Control & Protection Accuracy	14
5.4. Aggregation.....	15
6. Usability	15
6.1. Simulation Software Requirements	15
6.2. PSCAD Requirements	16
6.3. EMTP Requirements	16
6.4. Packaging & Compatibility	16
6.5. Model Inputs, Configuration & Tuning	17
6.6. Simulation Performance & Stability.....	18
6.7. Diagnostics & Outputs.....	18

7. Documentation	20
7.1. Introduction	20
7.2. Model Overview and File Integrity	20
7.3. Model Configuration and Technical Content	20
7.4. Model Design Documentation	21
7.5. Model Test Case Requirements	21
8. Delivery & Maintenance	22
8.1. General.....	22
8.2. Model Delivery Timeline & Scope of Delivery.....	22
8.3. Model Maintenance	23
8.4. Model Checklist	23
9. References	24
10. Appendix	25
10.1. Appendix A: Model Checklist	25

Revision	Date	Description	Comments
V1.0	14/07/25	First release	

COPYRIGHT © EirGrid

All rights reserved. No part of this work may be modified or reproduced or copied in any form or by means - graphic, electronic or mechanical, including photocopying, recording, taping or information and retrieval system, or used for any purpose other than its designated purpose, without the written permission of EirGrid

1. Introduction

1.1. Scope & Purpose

This document has been published by the TSO to provide clarity on the electromagnetic transient (EMT) modelling requirements for **Battery Energy Storage System (BESS) Power Park Modules (PPM)** in Ireland, as specified in Grid Code clause PC.A8 (Modelling Requirements for Users) [1.], in compliance with European legislation EU 2016/631 reflected in the Network Code for grid connection of generators (Requirements for Generators (RfG) [2.]). The contents of this document are also in alignment with the recommended amendments to the existing Network Codes submitted by ACER to the European Commission in December 2023 (RfG 2.0) [3.], and expected to be approved in 2025.

As the Ireland and Northern Ireland power system moves towards a net zero carbon operation; the number of Inverter-Based Resources (IBR) is expected to increase, with the amount of synchronous generation in the grid to decline, which will significantly change the dynamic characteristics of the All Island power system. These changes give rise to the potential of harmful control interactions between the devices and between the devices and the network, leading to risks of oscillations and inverter stability. These phenomena cannot be accurately and reliably studied using traditional RMS/Phasor domain models and require detailed EMT simulation. In order to plan and operate the All Island power system in a secure and reliable manner, the TSO requires all Users connected to, or applying for a connection to, the Transmission System to provide EMT models of their Plant following the specifications described in this document (GC PC.A8.1)¹. The document is intended to be read in conjunction with the Grid Code. Terms used in the document are in line with those specified in the Grid Code.

The objective of this document is to provide clear and consistent guidance with regards to the level of detail, model type, model accuracy, performance, usability and interoperability requirements for EMT models of BESS plants in Ireland. Provision of EMT models compatible with these specifications will enable the TSO to effectively setup and integrate the individual BESS plant model into a larger EMT network model and conduct wide-area simulation studies related to power system security and stability as well as to investigate recent sub-synchronous oscillations (SSO) incidents experienced in the All Island power system. The specifications described in this document are aligned with EMT model specifications already in place in other jurisdictions (see section 9. References), reflecting industry best practice. The BESS plant owner is responsible for ensuring that the EMT model submitted to the TSO is developed and configured to meet the specifications described in this document and is accompanied by documentation demonstrating that it represents the overall BESS plant, seen at the Point of Connection (PoC), as accurately as possible (GC PC.A8). This document applies to one specific type of equipment – the principal type within the plant. If the plant includes additional equipment or extensions of a different type (e.g. hybrid plant), these shall comply with the relevant specification outlined in a separate document.

This document describes:

- Intended use of the models.
- Components that must be included in the model.
- Structure of the model.
- Accuracy requirements for the model.
- Usability of the model.
- Requirements for model documentation.
- Requirements for delivery and maintenance/support of the model over the lifetime of the plant.
- Model checklist.

Requirements for model validation are described in a separate document.

¹ It should be noted that the model specifications described in this document are not subject to regulatory approval.

1.2. Abbreviations

AC	Alternative Current
BESS	Battery Energy Storage System
BMS	Battery Management System
CB	Circuit Breaker
DC	Direct Current
DLL	Dynamic Link Library
EMT	Electromagnetic Transients
FFR	Fast Frequency Response
FRT	Fault Ride Through
HMI	Human Machine Interface
IBR	Inverter Based Resource
IGBT	Insulated-Gate Bipolar Transistor
MSS	Minimum System Strength
PED	Pre-Energisation Data
PLL	Phase-Locked Loop
PoC	Point of Connection
PPC	Power Plant Controller
PPM	Power Park Module
RAS	Remedial Action Scheme
RMS	Root Mean Square
RoCoF	Rate of Change of Frequency
SCR	Short Circuit Ratio
SLD	Single Line Diagram
SMIB	Single Machine Infinite Bus
SoC	State of Charge
SSCI	Sub-Synchronous Control Interaction
SSO	Sub-Synchronous Oscillation
SSR	Sub-Synchronous Resonance
SSTI	Sub-Synchronous Torsional Interaction
TOV	Temporary Over-Voltage
TSO	Transmission System Operator
X/R	Reactance over Resistance ratio

2. Intended Use

2.1. Context

BESS_INT_1

As the Ireland and Northern Ireland power system moves towards a net zero carbon operation; the number of Inverter-Based Resources (IBR) is expected to increase, with the amount of synchronous generation in the grid to decline, which will significantly change the dynamic characteristics of the All Island power system. These changes give rise to the potential of harmful phenomena between the devices and between the devices and the network, leading to potential instability issues. These phenomena can only be studied with detailed electromagnetic transients (EMT) models.

2.2. Studies

BESS_INT_2

The EMT models provided as part of this specification will be integrated into a broader EMT network model, the scale of which will depend on the phenomena studied, ranging from studies of local phenomena to large-scale network simulation studies.

BESS_INT_3

The EMT model will be used for integration studies, post event analysis, and interaction studies **during the entire life of the plant.**

BESS_INT_4

The model will be used to carry out dynamic performance analysis and interactions studies including, but not limited to, the following list:

- Power system stability studies (for example voltage, frequency, rotor angle).
- Dynamic controls interactions studies (power oscillation, control loop interaction).
- Sub-synchronous phenomena analysis (including SSTI, SSR, SSCI).
- Harmonic stability analysis (harmonic instability, ferroresonance).
- Small disturbances (setpoint step changes).
- Transformer energisation studies.
- AC fault performance studies (for example, fault recovery, transient short circuit current analysis,)
- Protections performance studies
- Power quality studies² (for example harmonic voltage amplification, phase imbalance, flicker, harmonic amplification).
- Black-start or islanding operation studies (if applicable).

2.3. Model

BESS_INT_5

² It should be noted that the EMT model is not intended to be used to assess harmonic emissions and compliance with harmonic voltage distortion limits allocated by the TSO. A different model (frequency domain) is required for those purposes.

The model must be capable of simulating the **dynamic behaviour of the connected plant**, as seen at the Point of Connection (PoC), under normal operating conditions, small disturbances (e.g. voltage step change) and large disturbances (e.g. balanced/unbalanced system faults, voltage disturbances and frequency disturbances).

BESS_INT_6

The model must be capable to be used for the numerical calculation of the frequency dependent impedance of the plant at the connection point (impedance amplitude and impedance phase angle) in the frequency range that the model is valid as defined in section 5.1.

3. Components

3.1. Plant Specific

BESS_COM_1

The EMT model must be specific to the equipment and the site; **generic models or parameters are not acceptable.**

BESS_COM_2

The model characteristics provided (electrical model, parameters, topology of the plant, etc ...) must reflect the actual characteristics of the plant and not the manufacturer's default characteristics.

3.2. Electrical Components of the Plant

BESS_COM_3

The model must include all the high-voltage **electrical components** (as specified by IEC 60038) and equipment of the plant up to the PoC, in the “Connected Plant” area described by Figure 1. A non-exhaustive list is given hereafter:

- Power storage unit (e.g. battery, super-capacitor).
- Power converter between power storage unit and collector grid, including DC-DC converter and DC link.
- Power transformer(s), with tap changer (if applicable).
- Underground cables and overhead lines included in the plant.
- All circuit breakers including grading capacitor and insertion resistor when applicable.
- Harmonic filters, if applicable.
- Measuring equipment.
- Additional active power or reactive power control devices (e.g. AC and DC chopper, STATCOM, capacitor banks, shunt reactor), if applicable.
- Surge arresters.
- Neutral grounding devices (if applicable).

3.3. Control and Protection of the Plant

BESS_COM_4

The model must include all the relevant **control processes** of the plant (at plant level and at unit level). For Plant controller, Power storage controller and Converter controller, a minimum list of functions to be included is listed below (when applicable):

- Control involved in Fault Ride Through (FRT) functionality.
- Battery strings/Battery Management System (BMS).
- Active power control.
- Frequency control.
- Synthetic inertia control (if applicable).
- Reactive power control.
- Voltage control.
- Transformer tap changer control.
- Control of additional active power and/or reactive power control devices (e.g. AC chopper, STATCOM, capacitor banks, shunt reactor).
- Special control features, when applicable (e.g., grid forming control and/or weak grid control, power oscillation damping (sub and super synchronous)).

BESS_COM_5

The model must include all the relevant **protection processes** of the plant (at the unit level and the plant level). A minimum list of functions includes, when applicable:

- Protection involved in FRT functionality.
- Over/Under Voltage protection.
- Harmonic protection.
- Islanding protection.
- Overcurrent protection.
- Over/Under Frequency protection.
- Rate of Change of Frequency (RoCoF) protection.
- Power storage protection.
- Negative phase sequence (voltage unbalance) protection.
- Any Remedial Action Schemes (RAS) that have been deemed to have material impact on the system.
- Any protection which can influence dynamic behaviour or FRT performance in the simulation period should be included.

All protection systems included in the models must be consistent with the plant's performance standard.

Any protection (or control) functions capable of blocking or interrupting the output of the converters must be accurately represented in the model.

BESS_COM_6

All Phase-Locked Loop (PLL) controllers included in the plant must be modelled as implemented in the actual equipment.

BESS_COM_7

The EMT model must include all specific measurement methods, hardware filters, communications time delays between the different devices, if applicable, and any others specific implementation details which may impact the dynamic behaviour of the plant.

BESS_COM_8

All setpoints (active and reactive power, voltage, frequency, etc ...) available to the TSO from the real plant must be represented in the model. Additional relevant setpoints and parameters that may impact the dynamic behaviour of the plant shall also be included. All operating control modes and activation of specific control and protection functions shall be available in the model as for the real plant on site.

3.4. Co-located (hybrid) Sites

BESS_COM_9

In the particular case of co-located (hybrid) sites, i.e. when a connection project involves different technologies behind the same PoC, each technology type must be modelled using the relevant EMT model specifications published by the TSO that correspond to it. Both technology types still must be included in the same EMT model (see sections 4. Structure and 8. Delivery & Maintenance).

4. Structure

4.1. Model Structure Requirements

BESS_STR_1

This section describes the harmonised model structure requirements. The EMT plant model must be organised in three layers, as described next.

4.2. Requirements for Layer 1

BESS_STR_2

Purpose: Layer 1 defines the external electrical interface between the connected plant model and the simulated transmission system. It contains the PoC and the logic for current and voltage exchange with the grid equivalent.

Description: A high-level system representation with two elements visible - connected plant and grid equivalent - with a PoC busbar between the two - as illustrated in Figure 1.

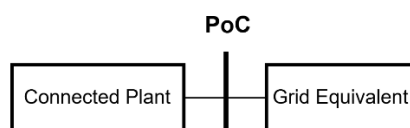


Figure 1: Layer 1 of the EMT model structure

4.3. Requirements for Layer 2

BESS_STR_3

Purpose: Layer 2 acts as a bridge between the TSO interface and the internal connected unit(s). It manages plant-level control actions, interprets TSO commands, and aggregates unit-level feedback.

Description: A representation of key elements of the installation - plant controller & protection, connected unit(s), collector grid and any additional equipment (if applicable) - as represented in Figure 2.

- This is the layer where all setpoints, control modes, and loop (de)activations are managed.

- Communication with the TSO (in simulation or real operation) is modelled at this layer - as specified in section 6.5.
- A user-accessible HMI interface (virtual panel) must be included for testing the visibility of:
 - Setpoints (P, Q, V, PF, f)
 - Plant status and mode selection
 - Controller toggles (flags) (e.g., ride-through enable, fault mode)

The following must be provided in this layer:

- Plots and monitoring signals representative of global plant behaviour.
- A single point of access to adjust all variable control parameters (ramp rates, droop, delays, etc.).

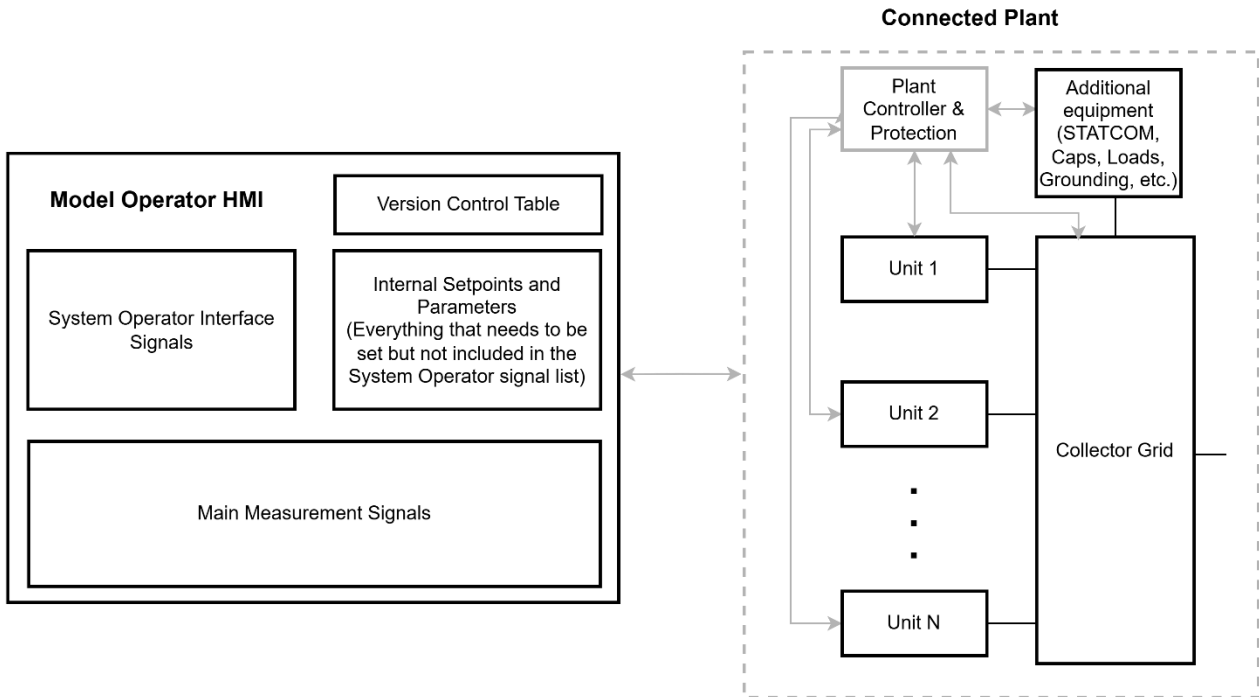


Figure 2: Layer 2 of the EMT model structure

4.4. Requirements for Layer 3

BESS_STR_4

Purpose: Layer 3 provides internal modelling of each individual connected unit(s) and its contribution to total plant performance. This includes electrical, physical (thermal, mechanical, etc.) and control functions - as represented in Figure 3 (see also section 5.4 in relation to aggregation).

Description: A detailed representation of each connected unit(s), as represented in Figure 3, includes:

- Power Generation subsystem (e.g., PV panel, battery, turbine), with associated controller.
- Converter, with associated controller.
- Device-level protection, limiters, and startup/shutdown logic.
- Any unit Transformer and Circuit breaker.

Units are connected to a shared Collector Grid with components modelled in detail:

- Cable impedances, grounding network, switches, auxiliary loads/devices.

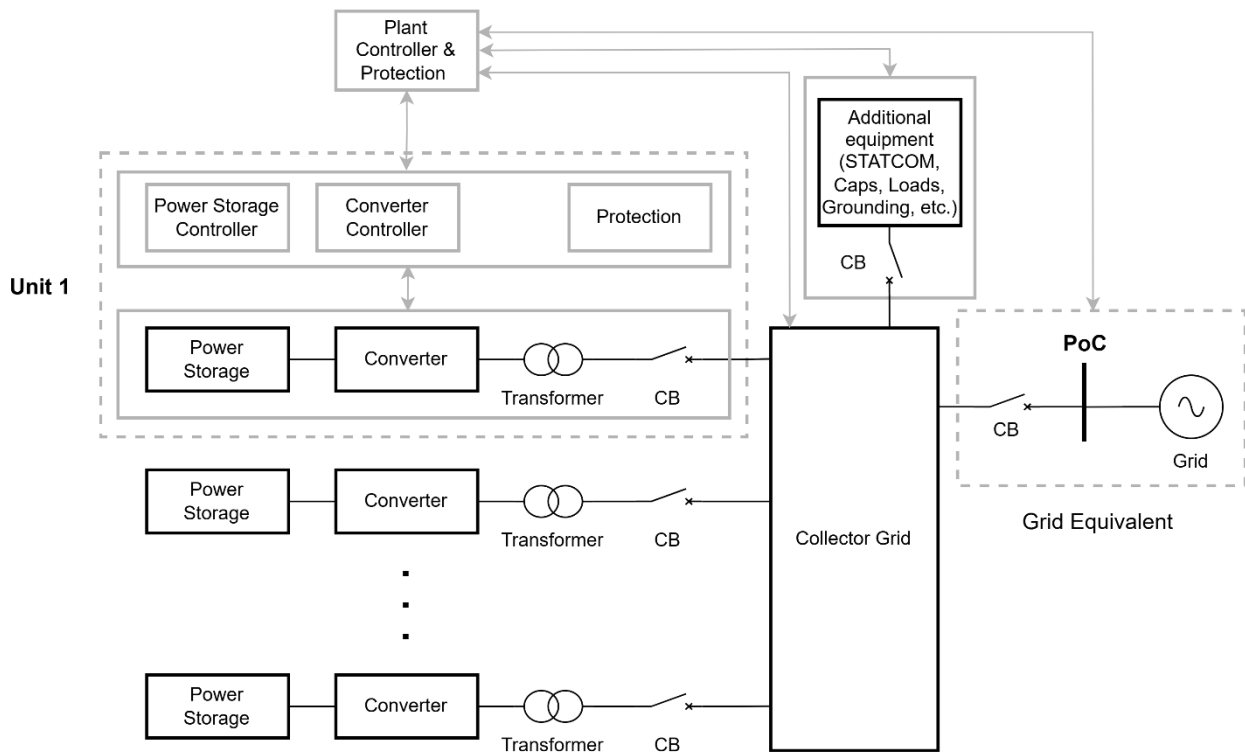


Figure 3: Layer 3 of the EMT model structure

4.5. Additional requirements for all Layers

BESS_STR_5

All setpoints and variable parameters must be grouped for access and editing within Layer 2.

BESS_STR_6

Layer 3 units must respond to Layer 2 signals in real time, maintaining numerical stability and control coherence.

BESS_STR_7

If any part of Layer 3 is masked, its interfaces and adjustable parameters must remain accessible via Layer 2.

BESS_STR_8

Diagnostic signals, trip indicators, and measurement outputs must be routed to Layer 2 or higher.

4.6. Co-located (hybrid) Sites

BESS_STR_9

In the particular case of co-located (hybrid) sites, all technology types must still be included in the same EMT model and positioned inside the "Connected Plant" represented in Layer 2.

5. Accuracy

5.1. System Accuracy

BESS_ACU_1

The model must be adequate for analysis of oscillatory behaviour of controls in sub-synchronous and super-synchronous ranges **from 0.2 Hz to 2.5 kHz**.

BESS_ACU_2

The model needs to be numerically stable for operating conditions described in the Grid Code and for any studies listed in section 2. Intended Use (including the full range of SCR and X/R values at the connection point provided by the TSO as pre-energisation data (PED)).

BESS_ACU_3

All systems/components with time constant less than 100 seconds should be included in the model. For instance, and not limited to, control and protection logics, onload tap changer controllers, and any other thermal, voltage or frequency related controller.

BESS_ACU_4

The model must be numerically stable and accurate for a minimum **100 seconds** following any set point changes or system incidents/faults.

5.2. Electrical Components Accuracy

BESS_ACU_5

Power Storage: Represented with a controlled voltage source and a resistance that depend on the function of the State of Charge (SoC) of the battery.

BESS_ACU_6

Converter: The converter model type choice (i.e. with detailed representation of semi-conductor devices or simplified/average model) is the responsibility of the model developer. The selected representation must be suitable for the prescribed validity frequency range (section 5.1), type of studies listed (section 2.2) and the simulation time step range (section 6.6) defined in this document. If an average model is selected by the model developer, this representation must average the switching frequency of the plant's dynamics so that fast control loops are preserved and only the switching dynamics and any pulse width modulation are omitted. This average model representation must still be able to correctly represent the dynamics between the DC side and the AC side of the plant (e.g. DC link dynamics, mechanical dynamics of wind turbines or photovoltaic cell dynamics), which must be documented by the plant owner.

BESS_ACU_7

Transformer model requirements:

- Magnetizing saturation of the transformers must be included.
- Frequency dependency of transformer damping shall be included, the calculation methodology should be documented and parameters used should be accessible. The methodology described in the CIGRE reference [14.] can be used.

BESS_ACU_8

Cables and overhead lines must use frequency-dependent models, although fixed frequency distributed line/cable model or lumped-circuit models could be accepted if they accurately represent the plant's response for the frequency range of validity of the model which is predefined above in section 5.1 and compliant with the simulation time step range predefined in section 6.6.

BESS_ACU_9

Switching devices/Circuit Breakers: a simplified representation of a Point-on-Wave control device (where applicable) is accepted.

BESS_ACU_10

Harmonic filters could be represented with lumped R/L/C components.

BESS_ACU_11

Measuring Equipment: The appropriate representation of measuring equipment should be compatible with the prescribed validity frequency range (section 5.1) and type of studies (section 2.2) listed in this document.

BESS_ACU_12

Additional **active power or reactive power control devices** (e.g. AC and DC chopper, BESS, STATCOM, capacitor banks, shunt reactor), if applicable: they need to respect the same level of requirements as the main equipment.

BESS_ACU_13

Surge arresters: they must be represented if they have an impact on the dynamic performance of the system especially during the Temporary Over-Voltages (TOVs).

BESS_ACU_14

Neutral grounding devices: they should always be included, with saturation characteristics included if relevant.

BESS_ACU_15

General requirement: **Stray capacitances** shall be included if needed, to comply with the prescribed validity frequency range and type of studies listed.

5.3. Control & Protection Accuracy

BESS_ACU_16

The "**real code**" (standard IEEE/CIGRE DLL vendor agnostic format and interface modelling method, as defined by Cigre TB 958 [13.]) must be included in the model for all control and protection functions, including signal processing.

BESS_ACU_17

Communication and processing time delays:

- All intentional or inherent latencies (e.g., signal transmission delays between different control and protection layers) must be modelled.

BESS_ACU_18

The actual **signal processing methods**, as implemented in the plant, must be included in the model:

- For example: RMS calculations, all filtering processes or any other type of frequency/angle estimation and all derived quantities based on instantaneous current and voltage measurements.
- These signal processing methods shall not be based on the native control block of the simulation tool, **only "real code" (with the format and interface defined in [13.]) of the processing method is accepted.**

5.4. Aggregation

BESS_ACU_19

In order to reduce the size of the model and increase the speed of the simulation, **the plant model must be fully aggregated by default** (GC PC.A8.2.1). In this representation, all components of the same “type” (i.e. identical model, type and performance) are aggregated and represented as one equivalent component (Figure 4). The following additional requirements apply:

- Descriptive information on the aggregation method and assumptions shall be provided.
- The response of the aggregated model measured at the PoC must be equivalent to that of the full detailed model. Documentation demonstrating the equivalence between both representations must be provided.
- The aggregated model shall be scalable.
- For hybrid facilities with several different types of generation units, a full aggregation of each unit type must be performed separately.

BESS_ACU_20

A detailed model “variant” shall be provided if the plant owner can demonstrate that a fully aggregated model is insufficient for accurately preserving the plant’s dynamic and transient properties within the scope of this specification. In certain cases, such as large BESS with extensive collector grid, the TSO may request by default the submission of both model “variants”: (i) fully aggregated and (ii) full detailed.

BESS_ACU_21

Main plant transformer and reactive compensation devices up to the PoC (e.g. switched shunts, harmonic filters, etc) must be individually represented regardless of the aggregation type.

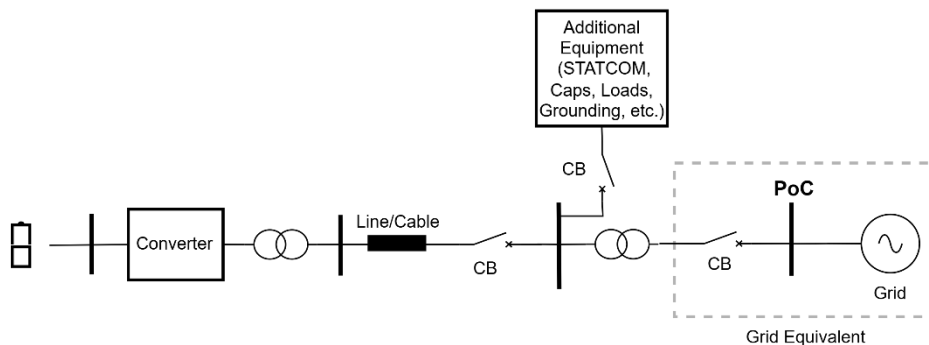


Figure 4: Fully aggregated model

6. Usability

6.1. Simulation Software Requirements

BESS_USA_1

The EMT model shall run on the EMT simulation software specified by the TSO (Grid Code PC.A8.8). No additional toolboxes shall be required to run the model without agreement with the TSO.

This EMT model specification is intended to be “**software agnostic**”, however some commercial tools have specific features that can affect the compatibility and performance of the model. The following sub-sections address software specific requirements. Both software platforms listed below are acceptable.

6.2. PSCAD Requirements

BESS_USA_2

If the PSCAD software is used to deliver the model, the specific requirements must be fulfilled:

- Be compatible with PSCAD version 5 or the version specified by the TSO.
- Be compatible with Intel Fortran Compiler version 19.2 and higher, and Visual studio 2019 and newer, compatible with 32-bit and 64-bit systems. It must also be executable with other versions of Intel Fortran – models that require GNU FORTRAN exclusively will not be accepted.
- Support the PSCAD “time snapshot” and “multiple run” features. In case the “snapshot” function is used, the model must provide the same response with or without snapshot usage.
- Not utilise multiple layers in the PSCAD environment, including ‘disabled’ layers.

6.3. EMTP Requirements

BESS_USA_3

If the EMTP software is used to deliver the model, the specific requirements must be fulfilled:

- Be compatible with EMTP version 4.5 or the version specified by the TSO.
- The use of masks is encouraged to facilitate the usability of the model.

6.4. Packaging & Compatibility

BESS_USA_4

It must be possible to copy the connected plant model, as defined in Layer 1 (Figure 1), and paste it into any other schematic implemented within the same EMT software without requiring any manual adaptation by the user to integrate the model into the new environment.

BESS_USA_5

Any number of the connected plant models can be placed in the same scheme with the following rules:

- Multiple instances of the connected plant model should be able to run with or without parallel computing.
- It should be done without any manual adaptation of the model required by the user of the different instances in the simulation environment.

BESS_USA_6

The model should produce the same results and behaviour whether it is used on its own or alongside models from other manufacturers within the same scheme, as long as they are not electrically connected in that scheme.

BESS_USA_7

Model package definition: When detailed model is required, there can be two types of models in the model package - (i) fully aggregated and (ii) full detailed - the description of the difference between the two models is explained in Accuracy section (5.4 Aggregation). All the requirements below apply to both types

of models in the model package. If both model variants are provided, they should be delivered in separate folders, one folder with all the necessary files for each model variant.

The model package shall also include a simplified model of the AC grid that can be adapted to the site-specific PoC and equipment configuration. No specific requirement on the type of model is made for the AC grid.

BESS_USA_8

The submitted **simulation model package** must include all files required to run a simulation, including a "model test case", and the model documentation defined in section 7.

- All control and protection functions must be provided in the "real code" format specified in the Cigre/IEEE TB 958 [13.] and interfaced with the plant model.
- Precompiled elements are forbidden (such as .lib, .obj, etc.), **only DLL files are accepted for control and protection functions.**
- The models should be configured to run without any manual adaptation by the user. For instance, location of any external references and files shall be specified with relative paths.
- When a new model version is submitted, the model package must contain all files required to run the simulation and the user guide documentation, the model design documentation should be resubmitted in case of changes to the model.
- All submitted files in the model package shall be identified with a name that includes a unique version identifier. When the model package is resubmitted for whatever reason (e.g. following an update), all corresponding files must be renamed with a new unique identifier.

BESS_USA_9

All electrical components listed in section 3.2 shall be open and accessible.

All "black-boxed" control and protection functions (i.e. real code interfaced with Cigre/IEEE standard [13.]) must follow the same guidelines as all files submitted in the simulation model package described above.

6.5. Model Inputs, Configuration & Tuning

BESS_USA_10

The use of global variables defined in the simulation environment is forbidden. If global variables need to be defined, it is required to use an external configuration file (.txt or .csv) for the connected plant.

BESS_USA_11

Interface signals and parameters must be tuneable via the model operator HMI in Layer 2 (Figure 2). This functionality must be supported during both initialization and dynamic simulation, enabling seamless set-point changes at runtime without compromising numerical stability or control accuracy. Where applicable, all models must allow adjustment – both prior to and during a simulation run – of, at a minimum, the following parameters:

1. List of signals required by TSO, as specified in <https://www.eirgrid.ie/grid/grid-codes-and-compliance-overview/grid-code-compliance-testing/power-park-modules-ppm>
2. Internal setpoints and/or parameters not included in the signal list, for example:
 - DC link voltage and current
 - Active and reactive currents
 - Quantity determining FRT activation
 - Set-point for active power
 - Set-point for reactive power, voltage or power factor

3. Control and protection modes and associated activation as listed in section 3.3

BESS_USA_12

The model should be submitted with all available Frequency Reserve Modes and setpoints defined to reflect the actual configuration of the plant on site.

By default, Mode 1 must be active, and the user must be able to select or switch the active mode both before simulation start and during runtime.

Any user-settable option must reflect real hardware capabilities and must only expose control configurations that are valid at the actual site being modelled.

BESS_USA_13

A table with version tracking shall be implemented in Layer 2 (Figure 2) of the model with reference to each model updated and changes made.

BESS_USA_14

It must be possible to parametrize the model so it can reproduce any operating point of the plant (active power, reactive power, and voltage) in line with the grid code requirements.

6.6. Simulation Performance & Stability

BESS_USA_15

The model must be capable of self-initialization. EMT models should initialize and ramp to the expected output without external input/actions from the user. Any slower control functions which are included (such as switched shunt controllers, transformer tap changers and other power plant controllers) should also accept initial condition variables if required.

BESS_USA_16

The model must initialise and reach stable steady-state to any user defined and valid operating point in **less than 3 seconds of simulation time** for the full operating range of the plant (MW and MVAR).

The voltage (RMS), frequency, active and reactive power measured at the PoC should remain constant ($\leq 0.1\%$ oscillatory behaviour) after the initialisation period during dynamic solution runs with no disturbances.

BESS_USA_17

The model must be adequate for **simulation time steps within a range from 10 μ s to 50 μ s, with 10 μ s steps**. The model must not be restricted to running at one single defined time step and must allow the TSO to have the flexibility to change the simulation time step. Any accuracy limitations at larger time steps must be clearly flagged to the TSO in the model documentation.

BESS_USA_18

Any unstable operation of the dynamic behaviour of the plant shall not result in crashing of the simulation, and any mechanism (protection etc.) that ceases the unstable operation shall reflect the actual power plant response.

6.7. Diagnostics & Outputs

BESS_USA_19

Appropriate and clear warnings must be generated whenever the operating point violates defined thresholds or enters invalid operating condition.

BESS_USA_20

The EMT model must provide at each marked node (see Figure 5), at a minimum, the following measurement signals (according to IEC 61400-21-1) and internally calculated by the measuring system of the plant:

- $V(t)$, $I(t)$: 3 phase instantaneous and RMS voltage and current
- V_{pos} , V_{neg} , V_{zero} : Positive, negative and zero sequence voltages
- I_{pos} , I_{neg} , I_{zero} : Positive, negative and zero sequence currents
- I_{posd} , I_{posq} : Positive sequence current on d and q axes
- P , Q : Active and reactive power
- P_{pos} , Q_{pos} : Positive sequence active and reactive power
- $freq$: Measured absolute frequency
- RoCoF: Calculated rate-of-change-of-frequency
- PLL input and output signals: frequency and angle
- Output of possible active power damping functions such as sub-synchronous damping controllers (if applicable)
- All voltage signal values will be provided in kV, current kA, active power in MW, reactive power in MVAR and measured frequency in Hz

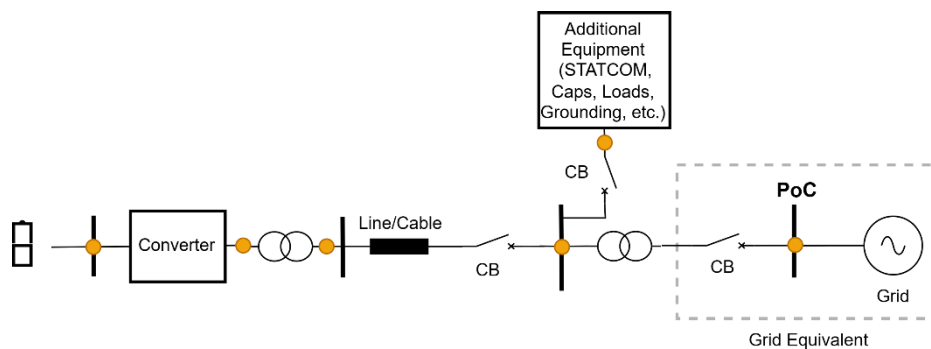


Figure 5: Measurement nodes in the EMT model

BESS_USA_21

The following output signals must be available from the operator HMI in Layer 2 (Figure 2):

- Positions of all circuit breakers, grid connection, each feeder and the connected plant.
- Transformer tap changer position when applicable.
- Control mode in operation (e.g. Frequency Reserve Mode 1/2/.../5).
- Diagnostic signals (e.g., flags to show which protection has been activated and whenever the operating point violates defined thresholds or enters invalid operating conditions) and should clearly identify why a model trips during simulations. Note that this refers only to those error/status codes which translate into a distinct electrical system response at the low voltage (LV) terminals of the plant, for example, normal, fault, stop, low voltage ride-through (LVRT) or high voltage ride-through (HVRT) activation, unstable mode identification.

7. Documentation

7.1. Introduction

BESS_DOC_1

The delivery of all EMT models must be accompanied with **appropriate documentation** with sufficient detail as specified by the TSO in this document (Grid Code PC.A8.3). The Model User Guide and a Model Design Documentation apply to both model variants specified in the Model Package (fully aggregated and, when applicable, full detailed - see section 5.4).

The following subsections specify the minimum information that must be included in the model documentation.

7.2. Model Overview and File Integrity

BESS_DOC_2

The **Model User Guide** must include:

- The documentation Vendor name and version of the model.
- Version history of the plant model - including versioned filenames and a brief change log.
- Software requirements and version compatibility.
- Mapping of converter (if applicable) or plant firmware version to EMT model version.
- List and description of all the files being submitted in the Model Package.
- Declaration by the plant owner confirming site-specific representation.
- Guidance on simulation platform setup.
- Clear mapping of implemented vs. missing plant functions.
- Any missing logic must be flagged and justified to the TSO.
- Instructions for setup and initialization.
- Description of any possible limitations of the model for the required time step range defined in section 6.6.
- Instructions to change control modes (including all the intermediate steps) and parameter settings.
- List of model parameters, highlighting parameters affecting ride-through and grid support services, if applicable.
- Mapping of differences between on-site values and model parameters (with explanations) when applicable.
- Model applicability boundaries, including minimum system strength (SCR) below which the model is no longer stable and, minimum/maximum X/R ratio outside which the model is no longer stable.
- Description of the test case and all the simulation waveforms

7.3. Model Configuration and Technical Content

BESS_DOC_3

Aggregation approach: Clearly describe plant-level aggregation method, assumptions and limitations. When only an aggregated model version is provided, the model documentation must demonstrate the equivalence

between the "fully aggregated" and the "full detailed" model responses over a representation range of operating conditions.

BESS_DOC_4

Full list including description of interface signals, model parameters and output signals available in the model operator HMI (Layer 2 - Figure 2):

- Description of each signal including signal name, unit, measurement points for output signals, base value, and variable type
- Valid input ranges for interface signals and model parameters.
- Relevance of parameters and interface signals depending on the selected control mode.

7.4. Model Design Documentation

BESS_DOC_5

Model Design documentation must be provided with the following:

- Plant single-line diagram (SLD) showing main components up to the PoC.
- Main circuit parameters and P,Q,U capabilities of the plant.
- Lengths, electrical and geometrical data of all high voltage cables and overhead lines required for EMT simulation modelling.
- Interface signal list for the exchange between the connected plant and the system operator.
- Control and protection philosophy of the plant (including auxiliary devices as defined in the section 3. Components and Figure 3) and unit level.
- Transformer nameplate and saturation data, power frequency impedances calculated from short circuit and open circuit tests for all applicable tap changer positions
- Surge arrester data sheet
- Harmonic filter data sheet (if applicable)

7.5. Model Test Case Requirements

BESS_DOC_6

The delivery of the EMT model must be accompanied by a **test case** such that the model can be tested before being integrated into the wide area model of the All Island network (Grid Code PC.A8.8). The "test case" must illustrate how to use the model variants (fully aggregated and, if applicable, full detailed) with clear guidelines and results to compare.

- The test case model must be configured according to the site-specific real equipment configuration and parameters up to the PoC.
- The test case must use a Single Machine Infinite Bus (SMIB) representation of the power system, as seen at the PoC using the Minimum System Strength (MSS) data provided by the TSO.
- A table with interface signals and model parameters used for each step of the test case must be provided.
- Time step used for the simulation must be clearly indicated.
- All waveforms of signals must be accessible from the model operator HMI (Layer 2 - Figure 2).

BESS_DOC_7

Case simulated: 100 milliseconds solid single phase-A to ground fault at PoC of the connected plant. The fault is applied at the maximum of phase a voltage.

BESS_DOC_8

The grid model and its parameters used are the ones supplied with the model package.

8. Delivery & Maintenance

8.1. General

BESS_MAI_1

Model providers should confirm that they have model maintenance and support frameworks in place with vendors / suppliers for the duration of the designed asset operational lifetime to provide model updates and technical supports to Asset Owner and the TSO, as per Grid Code clause PC.A8.7. Should this requirement be not achievable either in practical or commercial terms, then further discussions with the TSO are required to seek alternative means of continued model maintenance and support.

BESS_MAI_2

Technical support from the model supplier must be made available to support the TSO in setup and running simulation analysis and solve any relevant issues in case of non-compliance with any item of this EMT model specification.

- If any conflict is detected, it must be resolved through the system operator's procedure (e.g., meeting or email), always respecting model and data confidentiality.
- The duration of the model support shall be available as long as the plant is connected to the grid.

BESS_MAI_3

If the plant includes additional equipment or extensions of a different type - hybrid plant - (e.g. STATCOM, synchronous condenser, or auxiliary generation, energy storage, etc.), these components shall be represented according to their own applicable specification described in a separate document.

A single joint model is expected to represent the complete plant. However, this may be provided as a set of separate but interconnected models, as long as the interaction and integration between all components is correctly captured and aligned with system-level behaviour.

8.2. Model Delivery Timeline & Scope of Delivery

BESS_MAI_4

Preliminary model:

- comprises only the simplified model and documentation (user guide) with preliminary settings of the plant;
- 12 months before first energization of the plant.

BESS_MAI_5

Final model:

- Fully aggregated and, if applicable, full detailed variant model and documentation (user guide + design);
- with final settings as implemented on site as default;
- 3 months before first energization of the plant.

8.3. Model Maintenance

BESS_MAI_6

All Models provided by the TSO must be maintained and updated to accurately reflect the operational performance of the User's plant **over the lifetime of the plant** (Grid Code PC.A8.7).

Every time there is a modification on site (e.g. equipment, control and protection hardware and software, settings or interface signals), minor or major, that has material impact on the behaviour of the plant in steady state or during transients, a complete model package must be resubmitted in a timeframe agreed with the TSO (typically, no later than 1 month after modifications have been implemented on site).

BESS_MAI_7

Any update of the model submitted shall comply with the most up-to-date EMT model specification published by the TSO.

BESS_MAI_8

The TSO may from time-to-time request that the models be updated to be compatible with changes in the TSO's computing environment, namely software version and/or compiler version. The plant owner shall ensure that such updated models are provided without undue delay or in any event, within 90 Business Days of the date of the request. (Grid Code PC.A8.8)

8.4. Model Checklist

BESS_MAI_9

A complete checklist (see Appendix A: Model Checklist) must be submitted to the TSO confirming compliance with the specifications described in this document.

9. References

- [1.] EirGrid Grid Code v14.2 (July 2024)
- [2.] Commission Regulation (EU) 2016/631 of 14 April 2016 establishing a network code on requirements for grid connection of generators
- [3.] [ACER proposes amendments to the electricity grid connection network codes | www.acer.europa.eu](http://www.acer.europa.eu)
- [4.] NERC Reliability Guideline: Electromagnetic Transient Modelling for BPS-Connected Inverter Based Resources - Recommended Model Requirements and Verification Practices (March 2023)
- [5.] Electranix PSCAD Model Requirements Rev 12 (September 2022)
- [6.] CAISO EMT Modelling Requirements (April 2021)
- [7.] FINGRID Modelling instruction for PSS/E and PSCAD models (January 2024)
- [8.] AEMO Power System Modelling Guidelines (July 2023)
- [9.] REE Requisitos de los modelos EMT (June 2023)
- [10.] NGESO Guidance Notes for Electro-Magnetic Transient (EMT) Models (January 2023)
- [11.] ENERGINET REQUIREMENTS FOR GENERATORS (RFG) - SIMULATION MODEL REQUIREMENTS (September 2024)
- [12.] French Grid code for PPM - "Cahier des charges des capacités constructives - Conditions générales - Parc non synchrones de générateurs" Section 3.11.2 available online: https://servicesrte.com/files/live//sites/services-rte/files/documentsLibrary/20241225_DTR_7401_f
- [13.] CIGRE/IEEE Technical Brochure 958 "Guidelines for use of real-code in EMT models for HVDC, FACTS and inverter based generators in power systems analysis". February 2025. Available online at: <https://www.e-cigre.org/publications/detail/958-guidelines-for-use-of-real-code-in-emt-models-for-hvdc-facts-and-inverter-based-generators-in-power-systems-analysis.html>
- [14.] CIGRE Technical Brochure 766 "Network modelling for harmonic studies". April 2019. Available online at: <https://www.e-cigre.org/publications/detail/766-network-modelling-for-harmonic-studies.html>

10. Appendix

10.1. Appendix A: Model Checklist

This appendix is a EMT model checklist which must be completed by the plant owner and submitted alongside the EMT model.

Plant model identification		
Model submission Date		
Plant project name		
Primary contact information for model related questions		
List of EMT model files submitted		
List of documents submitted		
Plant model specification checklist		
2. Intended use		Model Complies? (Y, N, N/A, comments)
2.1	BESS_INT_1	
2.2	BESS_INT_2	
2.2	BESS_INT_3	
2.2	BESS_INT_4	
2.3	BESS_INT_5	
2.3	BESS_INT_6	
3. Components		Model Complies? (Y, N, N/A, comments)
3.1	BESS_COM_1	
3.1	BESS_COM_2	
3.2	BESS_COM_3	

3.3	BESS_COM_4	
3.3	BESS_COM_5	
3.3	BESS_COM_6	
3.3	BESS_COM_7	
3.3	BESS_COM_8	
3.4	BESS_COM_9	
4. Structure		Model Complies? (Y, N, N/A, comments)
4.1	BESS_STR_1	
4.2	BESS_STR_2	
4.3	BESS_STR_3	
4.4	BESS_STR_4	
4.5	BESS_STR_5	
4.5	BESS_STR_6	
4.5	BESS_STR_7	
4.5	BESS_STR_8	
4.6	BESS_STR_9	
5. Accuracy		Model Complies? (Y, N, N/A, comments)
5.1	BESS_ACU_1	
5.1	BESS_ACU_2	
5.1	BESS_ACU_3	
5.1	BESS_ACU_4	
5.2	BESS_ACU_5	
5.2	BESS_ACU_6	
5.2	BESS_ACU_7	
5.2	BESS_ACU_8	

5.2	BESS_ACU_9	
5.2	BESS_ACU_10	
5.2	BESS_ACU_11	
5.2	BESS_ACU_12	
5.2	BESS_ACU_13	
5.2	BESS_ACU_14	
5.2	BESS_ACU_15	
5.3	BESS_ACU_16	
5.3	BESS_ACU_17	
5.3	BESS_ACU_18	
5.4	BESS_ACU_19	
5.4	BESS_ACU_20	
5.4	BESS_ACU_21	
6. Usability		Model Complies? (Y, N, N/A, comments)
6.1	BESS_USA_1	
6.2	BESS_USA_2	
6.3	BESS_USA_3	
6.4	BESS_USA_4	
6.4	BESS_USA_5	
6.4	BESS_USA_6	
6.4	BESS_USA_7	
6.4	BESS_USA_8	
6.4	BESS_USA_9	
6.5	BESS_USA_10	

6.5	BESS_USA_11	
6.5	BESS_USA_12	
6.5	BESS_USA_13	
6.5	BESS_USA_14	
6.6	BESS_USA_15	
6.6	BESS_USA_16	
6.6	BESS_USA_17	
6.6	BESS_USA_18	
6.7	BESS_USA_19	
6.7	BESS_USA_20	
6.7	BESS_USA_21	
7. Documentation		Model Complies? (Y, N, N/A, comments)
7.1	BESS_DOC_1	
7.2	BESS_DOC_2	
7.3	BESS_DOC_3	
7.3	BESS_DOC_4	
7.4	BESS_DOC_5	
7.5	BESS_DOC_6	
7.5	BESS_DOC_7	
7.5	BESS_DOC_8	
8. Delivery & Maintenance		Model Complies? (Y, N, N/A, comments)
8.1	BESS_MAI_1	
8.1	BESS_MAI_2	
8.1	BESS_MAI_3	
8.2	BESS_MAI_4	

8.2	BESS_MAI_5	
8.3	BESS_MAI_6	
8.3	BESS_MAI_7	
8.3	BESS_MAI_8	
8.4	BESS_MAI_9	