



Find out more about EirGrid's work

Fingal to East Meath Grid Reinforcement Project

Who is EirGrid and what do we do?

EirGrid is responsible for managing and operating Ireland's electricity grid, which supplies power to homes, farms, businesses, schools and hospitals.

Our goal is to ensure a safe and reliable electricity supply while preparing for a low-carbon future.

To achieve this, EirGrid is making significant upgrades and improvements to the electricity grid across Ireland.

We are committed to keeping communities involved and informed throughout the process, considering their feedback as we strengthen the grid.

What's happening now?

EirGrid is making plans to ensure we can continue to meet growing electricity demand in the rapidly developing areas of Fingal and East Meath. This will involve building new infrastructure to link the high-voltage transmission system with the lower-voltage distribution system that delivers electricity to homes and businesses.

In late 2024, EirGrid held a public consultation to discuss grid enhancement projects with local communities and businesses.

After assessing the various options based on consultation feedback and environmental, economic, and technical factors, Zone 1 (as shown in map) and Gas-Insulated Switchgear Substation technology, typically housed indoors in dedicated buildings, have been identified as the preferred options moving forward.

You can find out more about the studies, assessment criteria, and EirGrid's consultation report that have informed the zone and technology selection at EirGrid.ie/fingaleastmeath.

We will now focus on identifying specific sites within Zone 1, and routes for connection into existing assets and the proposed substation in the Rathoath area. We will continue to seek community input as part of our planning process and will be back in touch soon.

Community Forum

EirGrid is creating a Community Forum for the Fingal to East Meath Grid Reinforcement Project to ensure local input. The forum will facilitate discussions on how we communicate and engage with the public; what we need to consider in developing the project; and how we can deliver meaningful community benefit to the area. Interested individuals can find out more and express interest in joining the forum on our website.

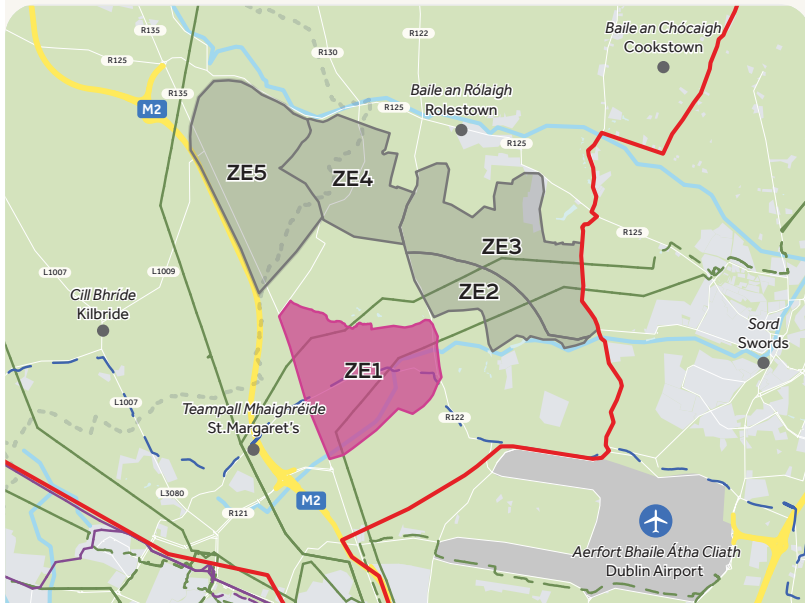
Further Information

If you have any queries or local information you wish to share, please contact:



Grainne Duffy

Community Liaison Officer
Grainne.Duffy@EirGrid.com
085 887 4798



Project Benefits



Economic

Contribute to the regional economy and support increased investment in the area



Community

Deliver community benefits in the areas that facilitate the project infrastructure



Local

Helping to meet increasing local transport and housing requirements



Competition

Apply downward pressure on the cost of electricity



Sustainability

Help Ireland's transition to a low carbon energy future



Security of supply

Improve security of electricity supply across the island of Ireland





Tuilleadh eolais faoi obair EirGrid

Tionscadal Atreisthe Eangach Fhine Gall go hEangach na Mí Thoir

Cé hiad EirGrid agus Céard a Dhéanaimid?

Tá EirGrid freagrach as eangach leictreachais na hÉireann a bhainistiú agus a oibriú, lena soláthraítear cumhacht do thithe, d'fheirmeacha, do ghnólachtaí, do scoileanna agus d'ospidéal.

Is é ár gcuspóir soláthar leictreachais sábháilte agus iontaofa a chinntiú agus muid ag ullmhú do thodhchaí ísealcharbóin.

Chun an méid sin a bhaint amach, tá uasghráduithe agus feabhsuithe suntasacha á ndéanamh ag EirGrid ar an eangach leictreachais ar fud na hÉireann.

Táimid tiomanta do phobail a choinneáil rannpháirteach agus ar an eolas le linn an phróisis, agus a n-aiseolas á mheas againn de réir mar a neartaímid an eangach.

Cad atá ag tarlú anois?

Tá pleananna á ndéanamh ag EirGrid lena chinntiú gur féidir linn leanúint ar aghaidh ag freastal ar an éileamh méadaitheach leictreachais i gceantair Fhine Gall agus na Mí Thoir atá ag forbairt go tapa. Is éard a bheidh i gceist leis seo bonneagar nua a thógáil chun an córas tarchurtha ardvoltais a nascadh leis an gcóras dáilte ísealvoltais a sheachadann leictreachas chuig tithe agus gnólachtaí.

I dtreo dheireadh 2024, reáchtáil EirGrid comhairliúcháin poiblí chun tionscadail feabhsaithe eangai a phlé le pobail agus gnólachtaí áitiúla.

Tar éis measúnú a dhéanamh ar na roghanna éagsúla bunaithe ar aiseolas comhairliúcháin agus ar thosca comhshaoil, eacnamaíocha agus teicniúla, sainithníodh Crios 1 (mar a thaispeántar ar an léarscáil) agus teicneolaíocht an Fhostáisiúin Lascthreamh Ghás-Insíthe, a bhíonn lonnaithe laistigh i bhfoirgnimh thiomnaithe de ghnáth, mar na roghanna is fearr amach anseo.

Is féidir leat tuilleadh eolais a fháil faoi na staidéir, na critéir mheasúnaithe agus tuarascáil chomhairliúcháin EirGrid a chuir bonn eolais faoin roghnú creasa agus teicneolaíochta ag EirGrid.ie/fingaleastmeath.

Díreoimid anois ar láithreáin shonracha a shainithint laistigh de Chrios 1, agus bealaí chun nascadh le sócmhainní atá ann cheana féin agus leis an bhfostáisiún atá beartaithe i gceantar Ráth Tó. Leanfaimid orainn ag lorg ionchur ón bpobal mar chuid dár bpróiseas pleanála agus beimid i dteagmháil arís go luath.

Fóram Pobail

Tá EirGrid ag cruthú Fóram Pobail do Thionscadal Atreistí Eangach Fhine Gall go hOirthear na Mí chun ionchur áitiúil a chinntiú. Éascóidh an fóram plé ar an gcaoi a ndéanaimid cumarsáid agus teagmháil leis an bpobal; an méid is gá dúinn a chur san áireamh agus an tionscadal á forbairt againn; agus conas is féidir linn leas fóinteach an phobail a chur ar fáil don cheantar. Is féidir le daoine aonair a bhfuil suim acu ann níos mó a fháil amach agus spéis a léiriú trí pháirt a ghlacadh san fhóram ar ár suíomh Gréasáin.

Tuilleadh Eolais

Má tá aon cheist agat nó aon eolas áitiúil is mian leat a roinnt, déan teagmháil le:



Grainne Duffy

Oifigeach Idirchaidrimh Pobail

Grainne.Duffy@EirGrid.com

085 887 4798

Buntáistí an Tionscadail



Geilleagrach

Rannchuidiú leis an ngeilleagar réigiúnach agus tacú le hinfeistiú méadaithe sa cheantar



Pobal

Sochar pobail a chur ar fáil sna ceantair a éascaíonn bonneagar an tionscadail



Áitiúil

Ag cabhrú le freastal ar riachtanais méadaithe iompair áitiúil, fostaíochta agus tithíochta



Iomaíocht

An costas a bhaineann le leictreachas a bhrú síos



Inbhuanaitheacht

Cabhrú le hÉirinn aistriú chuig todhchaí fuinnimh ísealcharbóin



Slándáil an tsoláthair

Feabhas a chur ar shlándáil an tsoláthair leictreachais ar fud oileán na hÉireann

