

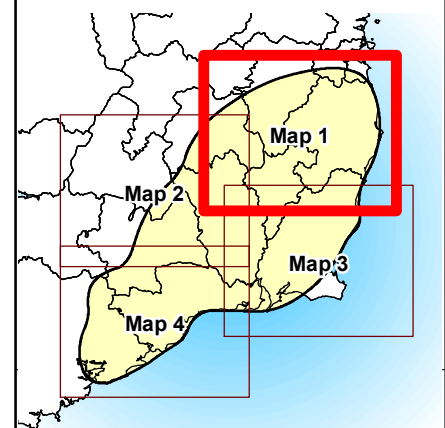
Legend

- Study Area
- Project Nodal Point
- Major Town/City

CORINE 2006

Level 2 Classification

- 11. Urban fabric
- 12. Industrial, commercial
- 13. Mines, dumps, construction
- 14. Artificial non-agricultural
- 21. Arable land
- 23. Pastures
- 24. Heterogeneous agricultural
- 31. Forest
- 32. Scrub and/or herbaceous
- 33. Open spaces
- 41. Inland wetlands
- 42. Coastal wetlands
- 51. Continental waters
- 52. Marine waters



Client



THE GRID LINK PROJECT

Title

Land Use (CORINE)
(Map 1 of 4)

Figure 8.3.1 (1 - 4)

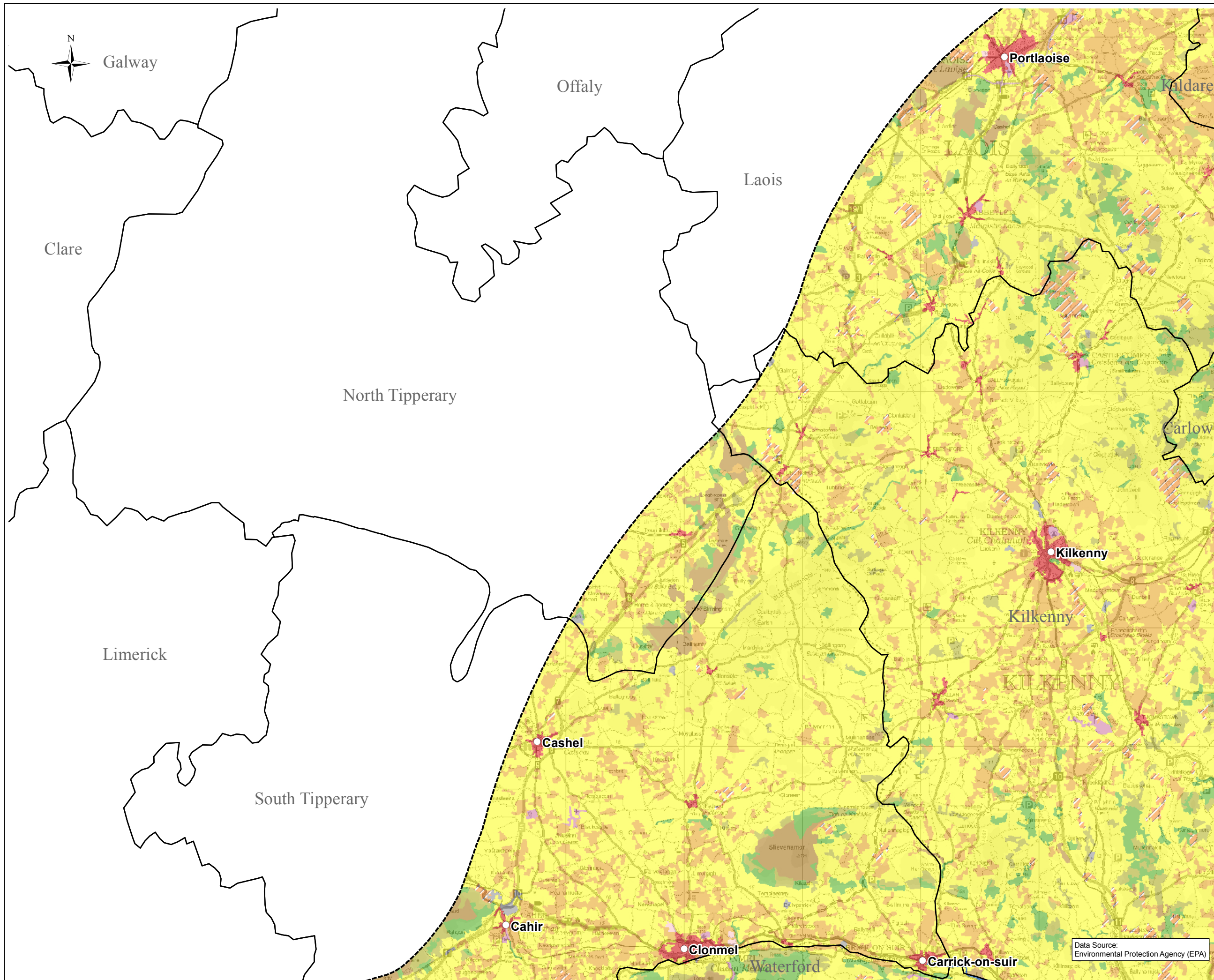
RPS West Pier Business Campus, T +353 (0) 1 4882900
Dun Laoghaire, F +353 (0) 1 2835678
Co Dublin, Ireland. E ireland@rpsgroup.com
W rpsgroup.com/ireland

Issue Details			
Drawn By: S. Khan	Project No.	MDR835	
Checked By: A. Gaughran	File Ref:	MDR0835Arc_EV0019F02	
Approved By: A. Gaughran	Drawing No.	EV0019	Rev: F02
Scale: 1:300,000 @ A3	Date:	20/08/2012	

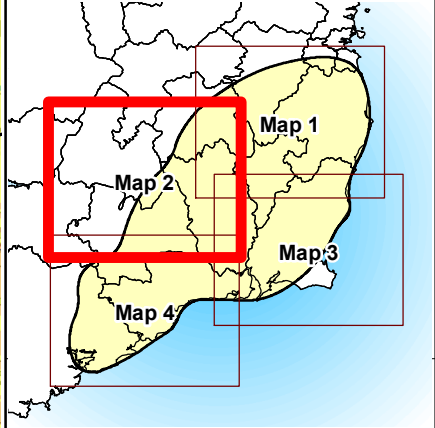
NOTE:

1. This drawing is the property of RPS Group Ltd. It is a confidential document and must not be copied, used, or its contents divulged without prior written consent.
2. Ordnance Survey Ireland Licence EN 0005012 ©Copyright Government of Ireland.

Data Source:
Environmental Protection Agency (EPA)



- Legend**
- Study Area
 - Project Nodal Point
 - Major Town/City
- CORINE 2006**
- Level 2 Classification**
- 11. Urban fabric
 - 12. Industrial, commercial
 - 13. Mines, dumps, construction
 - 14. Artificial non-agricultural
 - 21. Arable land
 - 23. Pastures
 - 24. Heterogeneous agricultural
 - 31. Forest
 - 32. Scrub and/or herbaceous
 - 33. Open spaces
 - 41. Inland wetlands
 - 42. Coastal wetlands
 - 51. Continental waters
 - 52. Marine waters



Client

THE GRID LINK PROJECT

Title **Land Use (CORINE) (Map 2 of 4)**

Figure 8.3.1 (1 - 4)

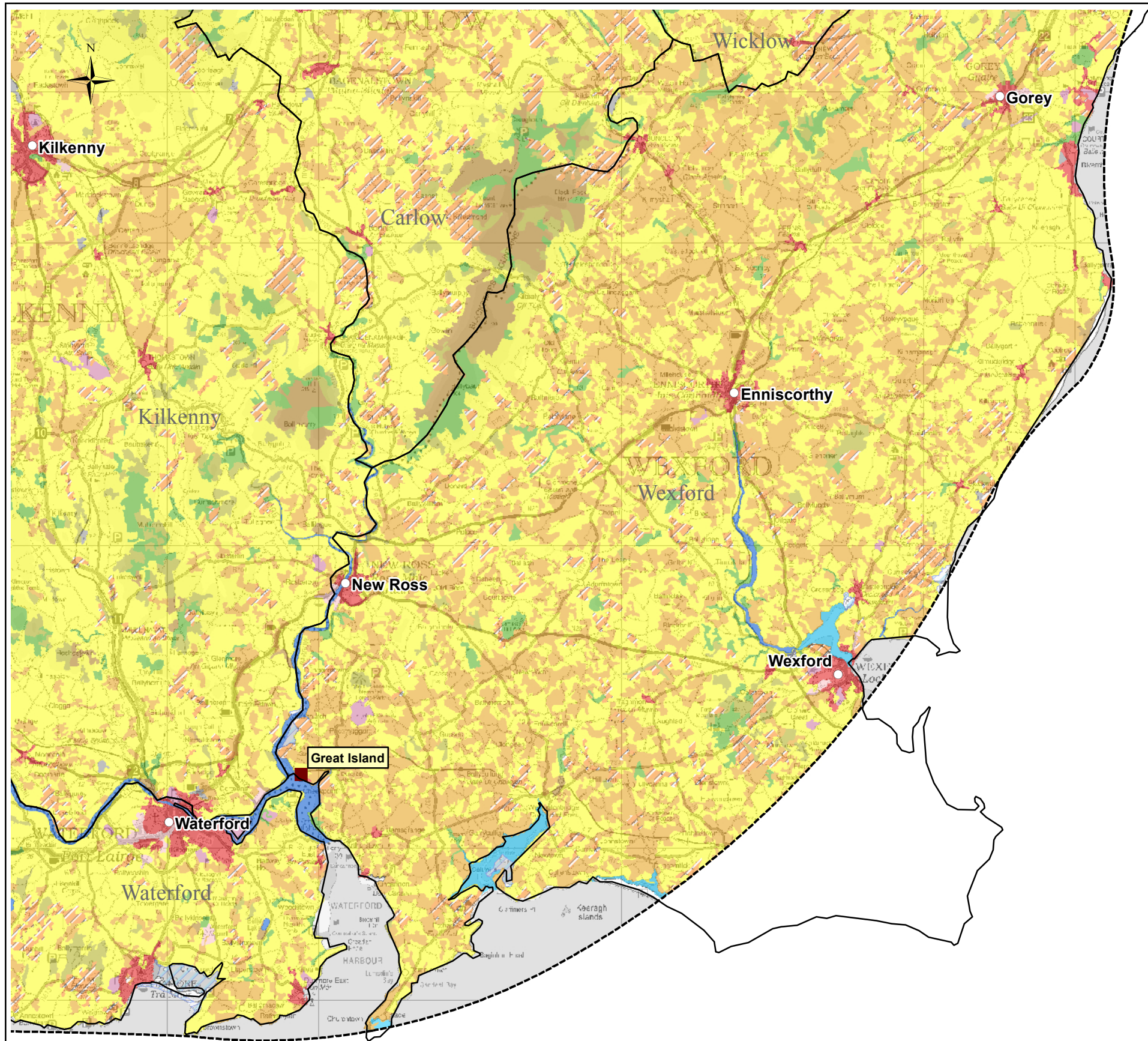
West Pier Business Campus, T +353 (0) 1 4882900
 Dun Laoghaire, F +353 (0) 1 2835678
 Co Dublin, Ireland. E ireland@rpsgroup.com
 W rpsgroup.com/ireland

Issue Details			
Drawn By: S. Khan	Project No.	MDR835	
Checked By: A. Gaughran	File Ref:	MDR0835Arc_EV0019F02	
Approved By: A. Gaughran	Drawing No.	EV0019	Rev: F02
Scale: 1: 300,000 @ A3	Date:	20/08/2012	




NOTE:

1. This drawing is the property of RPS Group Ltd. It is a confidential document and must not be copied, used, or its contents divulged without prior written consent.
2. Ordnance Survey Ireland Licence EN 0005012 ©Copyright Government of Ireland.

Data Source: Environmental Protection Agency (EPA)












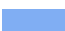




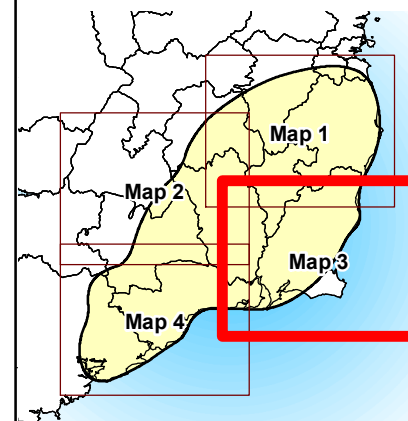
Legend

-  Study Area
-  Project Nodal Point
-  Major Town/City

CORINE 2006

Level 2 Classification

-  11. Urban fabric
-  12. Industrial, commercial
-  13. Mines, dumps, construction
-  14. Artificial non-agricultural
-  21. Arable land
-  23. Pastures
-  24. Heterogeneous agricultural
-  31. Forest
-  32. Scrub and/or herbaceous
-  33. Open spaces
-  41. Inland wetlands
-  42. Coastal wetlands
-  51. Continental waters
-  52. Marine waters



Client



THE GRID LINK PROJECT

Title

**Land Use
(CORINE)
(Map 3 of 4)**

Figure 8.3.1 (1 - 4)

RPS West Pier Business Campus, T +353 (0) 1 4882900
 Dun Laoghaire, F +353 (0) 1 2835678
 Co Dublin, Ireland. E ireland@rpsgroup.com
 W rpsgroup.com/ireland

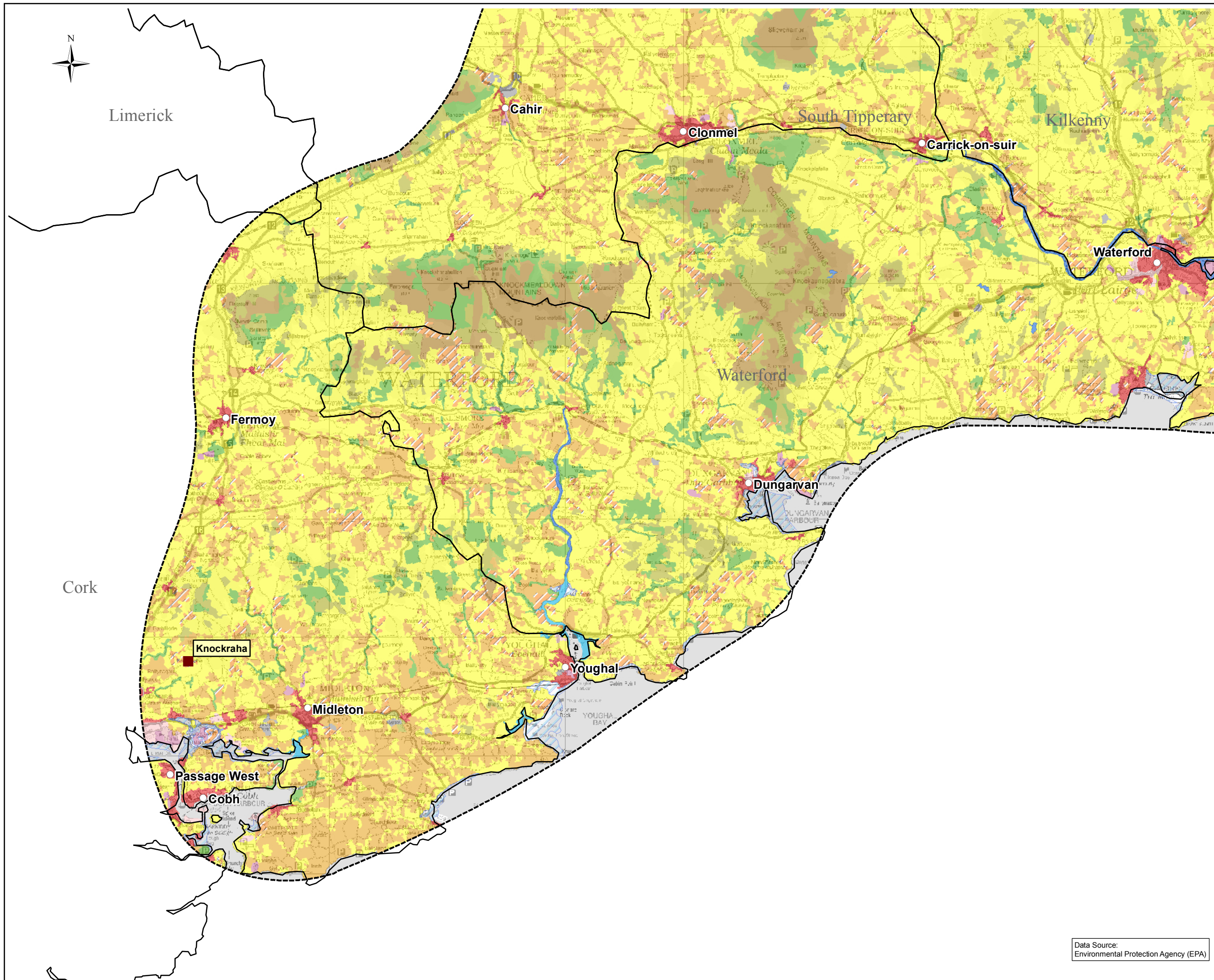
Issue Details

Drawn By: S. Khan	Project No.: MDR835
Checked By: A. Gaughran	File Ref: MDR0835Arc_EV0019F02
Approved By: A. Gaughran	
Scale: 1:300,000 @ A3	Drawing No.: EV0019
Date: 20/08/2012	Rev: F02

NOTE:

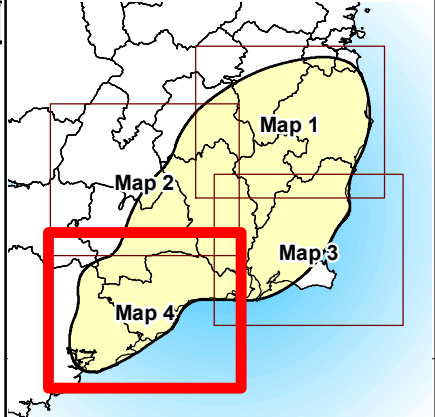
1. This drawing is the property of RPS Group Ltd. It is a confidential document and must not be copied, used, or its contents divulged without prior written consent.
2. Ordnance Survey Ireland Licence EN 0005012 ©Copyright Government of Ireland.

Data Source:
Environmental Protection Agency (EPA)



Legend

- Study Area
- Project Nodal Point
- Major Town/City
- CORINE 2006**
- Level 2 Classification**
- 11. Urban fabric
- 12. Industrial, commercial
- 13. Mines, dumps, construction
- 14. Artificial non-agricultural
- 21. Arable land
- 23. Pastures
- 24. Heterogeneous agricultural
- 31. Forest
- 32. Scrub and/or herbaceous
- 33. Open spaces
- 41. Inland wetlands
- 42. Coastal wetlands
- 51. Continental waters
- 52. Marine waters



Client



THE GRID LINK PROJECT

Title

**Land Use
(CORINE)
(Map 4 of 4)**

Figure 8.3.1 (1 - 4)



West Pier Business Campus, T +353 (0) 1 4882900
Dun Laoghaire, F +353 (0) 1 2835678
Co Dublin, Ireland, E ireland@rpsgroup.com
W rpsgroup.com/ireland

Issue Details

Drawn By: S. Khan	Project No.: MDR835
Checked By: A. Gaughran	File Ref: MDR0835Arc_EV0019F02
Approved By: A. Gaughran	
Scale: 1:300,000 @ A3	Drawing No.: EV0019
Date: 20/08/2012	Rev: F02

NOTE:

1. This drawing is the property of RPS Group Ltd. It is a confidential document and must not be copied, used, or its contents divulged without prior written consent.
2. Ordnance Survey Ireland Licence EN 0005012 ©Copyright Government of Ireland.

Data Source:
Environmental Protection Agency (EPA)