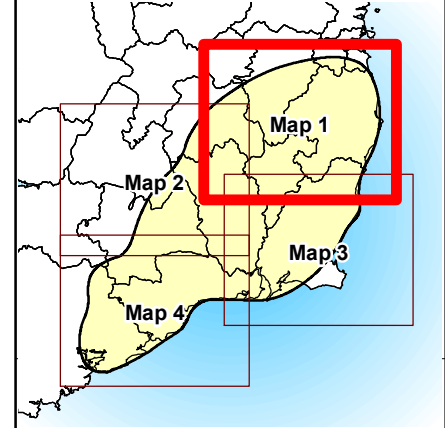


Legend

- Study Area
- Major Town/City
- Project Nodal Point
- Landfill
- Quarry (Active)
- Mines
- Tourist Attractions
- Rivers for Drinking Water (WFD data)
- Recreational Beaches (WFD data)
- Walking & Cycling Trails
- Bord na Mona Bogs
- Coillte Forest Properties

Data Source:
 Environmental Protection Agency (EPA)
 Geological Survey of Ireland (GSI)
 Coillte
 Bord na Mona




Client


THE GRID LINK PROJECT

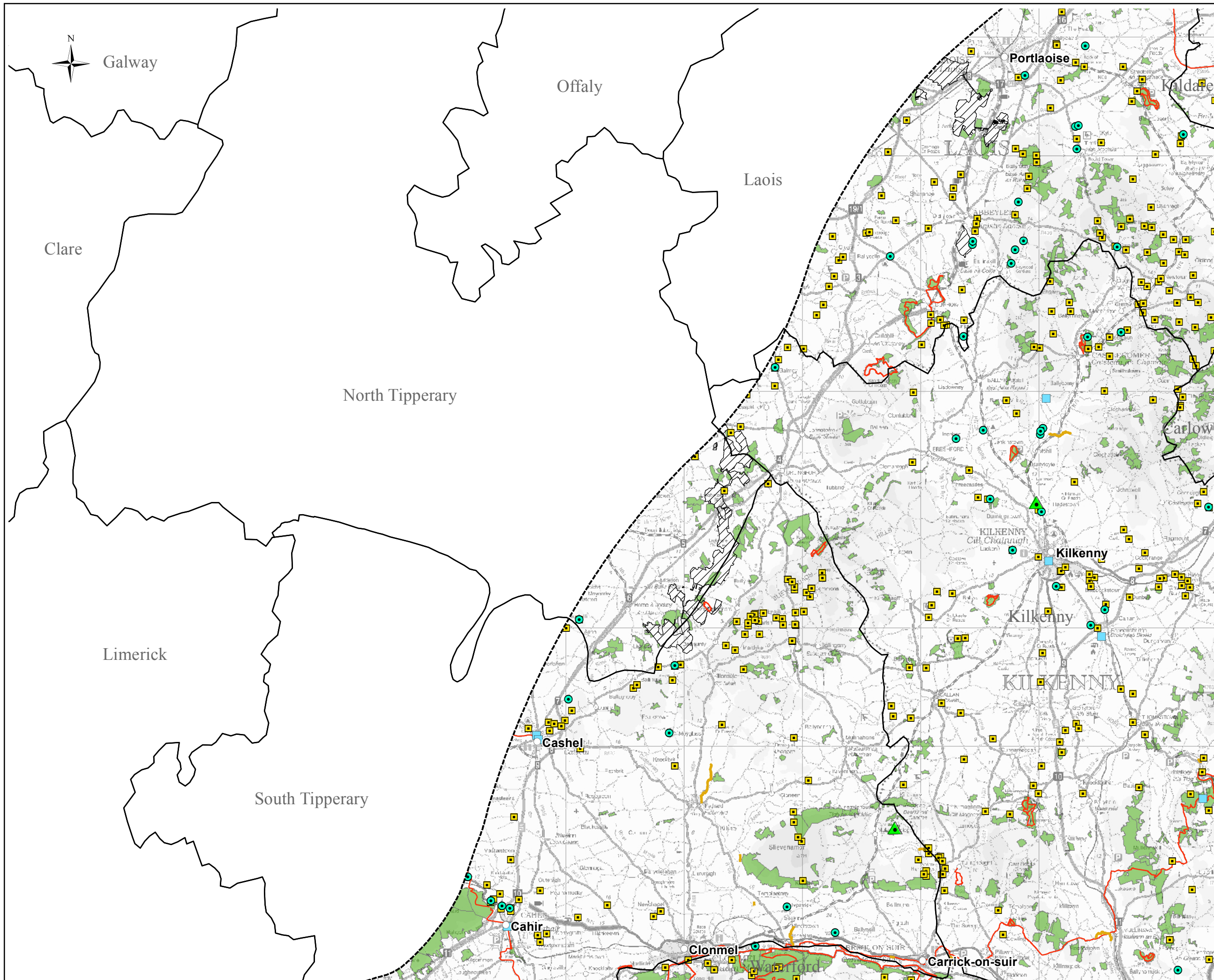
Title
Land Use (Other)
(Map 1 of 4)

Figure 8.3.2 (1 - 4)

 West Pier Business Campus, T +353 (0) 1 4882900
 Dun Laoghaire, F +353 (0) 1 2835678
 Co Dublin, Ireland, E ireland@rpsgroup.com
 W rpsgroup.com/ireland

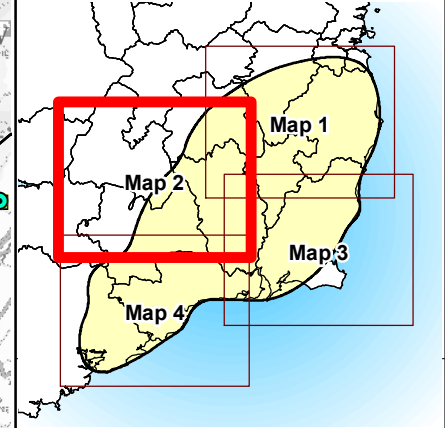
Issue Details			
Drawn By: S. Khan	Project No.	MDR835	
Checked By: A. Gaughran	File Ref:	MDR0835Arc_EV002F02	
Approved By: A. Gaughran	Drawing No.	Rev:	
Scale: 1:300,000 @ A3	EV0020	F02	
Date: 20/08/2012			

NOTE:
 1. This drawing is the property of RPS Group Ltd. It is a confidential document and must not be copied, used, or its contents divulged without prior written consent.
 2. Ordnance Survey Ireland Licence EN 0005012
 ©Copyright Government of Ireland.



- ### Legend
- Study Area
 - Major Town/City
 - Project Nodal Point
 - ▲ Landfill
 - Quarry (Active)
 - Mines
 - Tourist Attractions
 - Rivers for Drinking Water (WFD data)
 - Recreational Beaches (WFD data)
 - Walking & Cycling Trails
 - Bord na Mona Bogs
 - Coillte Forest Properties

Data Source:
 Environmental Protection Agency (EPA)
 Geological Survey of Ireland (GSI)
 Coillte
 Bord na Mona




Client


THE GRID LINK PROJECT

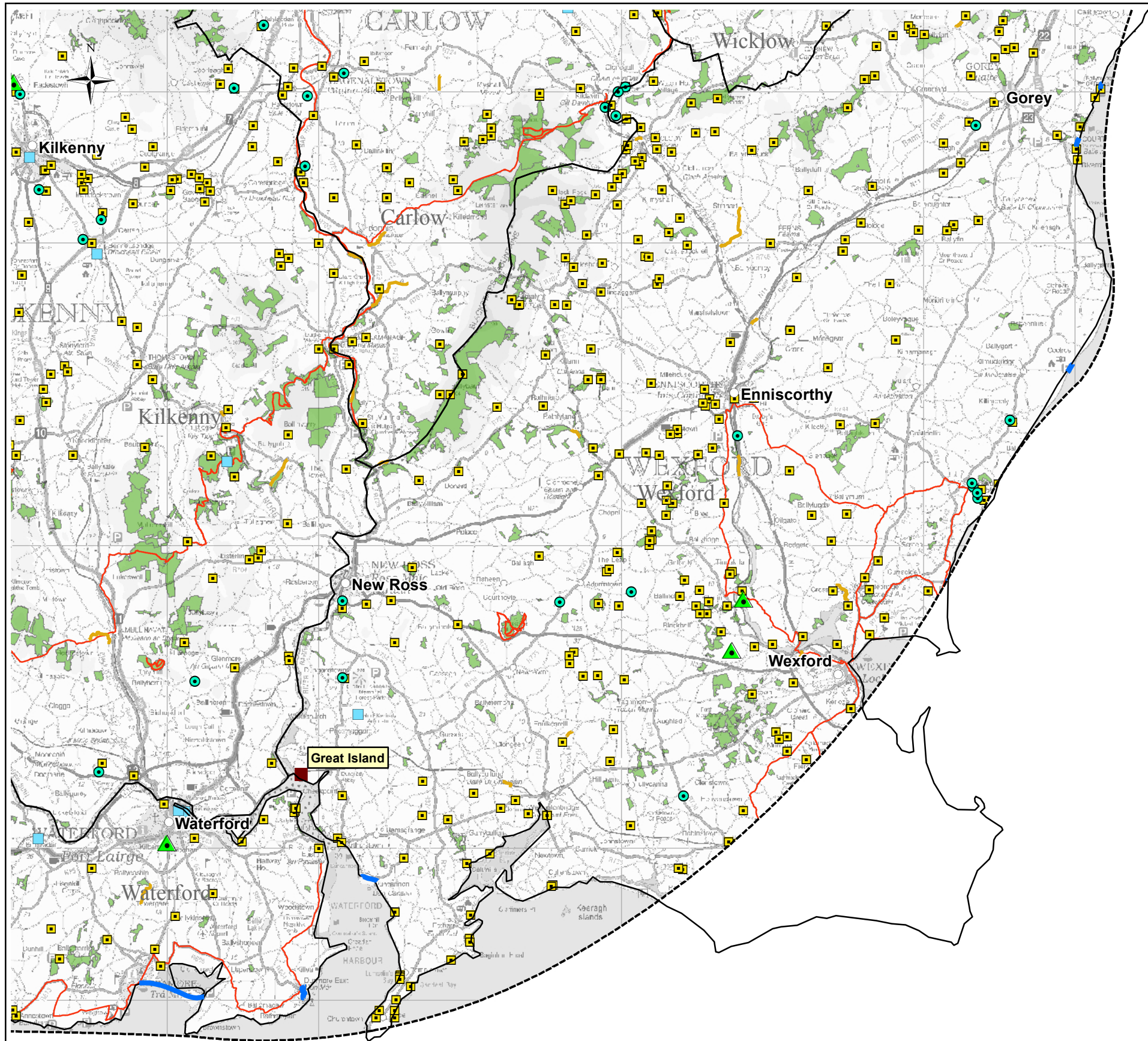
Title
Land Use (Other)
(Map 2 of 4)

Figure 8.3.2 (1 - 4)

 West Pier Business Campus, T +353 (0) 1 4882900
 Dun Laoghaire, F +353 (0) 1 2835676
 Co Dublin, Ireland, E ireland@rpsgroup.com
 W rpsgroup.com/ireland

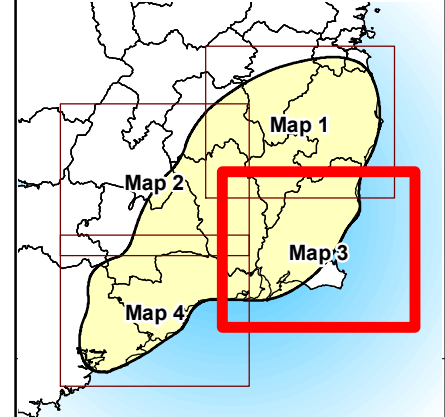
Issue Details			
Drawn By: S. Khan	Project No.	MDR835	
Checked By: A. Gaughran	File Ref:	MDR0835Arc_EV0020F02	
Approved By: A. Gaughran	Drawing No.	Rev:	
Scale: 1:300,000 @ A3	EV0020	F02	
Date: 20/08/2012			

NOTE:
 1. This drawing is the property of RPS Group Ltd. It is a confidential document and must not be copied, used, or its contents divulged without prior written consent.
 2. Ordnance Survey Ireland Licence EN 0005012
 ©Copyright Government of Ireland.



- ### Legend
- Study Area
 - Major Town/City
 - Project Nodal Point
 - Landfill
 - Quarry (Active)
 - Mines
 - Tourist Attractions
 - Rivers for Drinking Water (WFD data)
 - Recreational Beaches (WFD data)
 - Walking & Cycling Trails
 - Bord na Mona Bogs
 - Coillte Forest Properties

Data Source:
 Environmental Protection Agency (EPA)
 Geological Survey of Ireland (GSI)
 Coillte
 Bord na Mona



Client

THE GRID LINK PROJECT

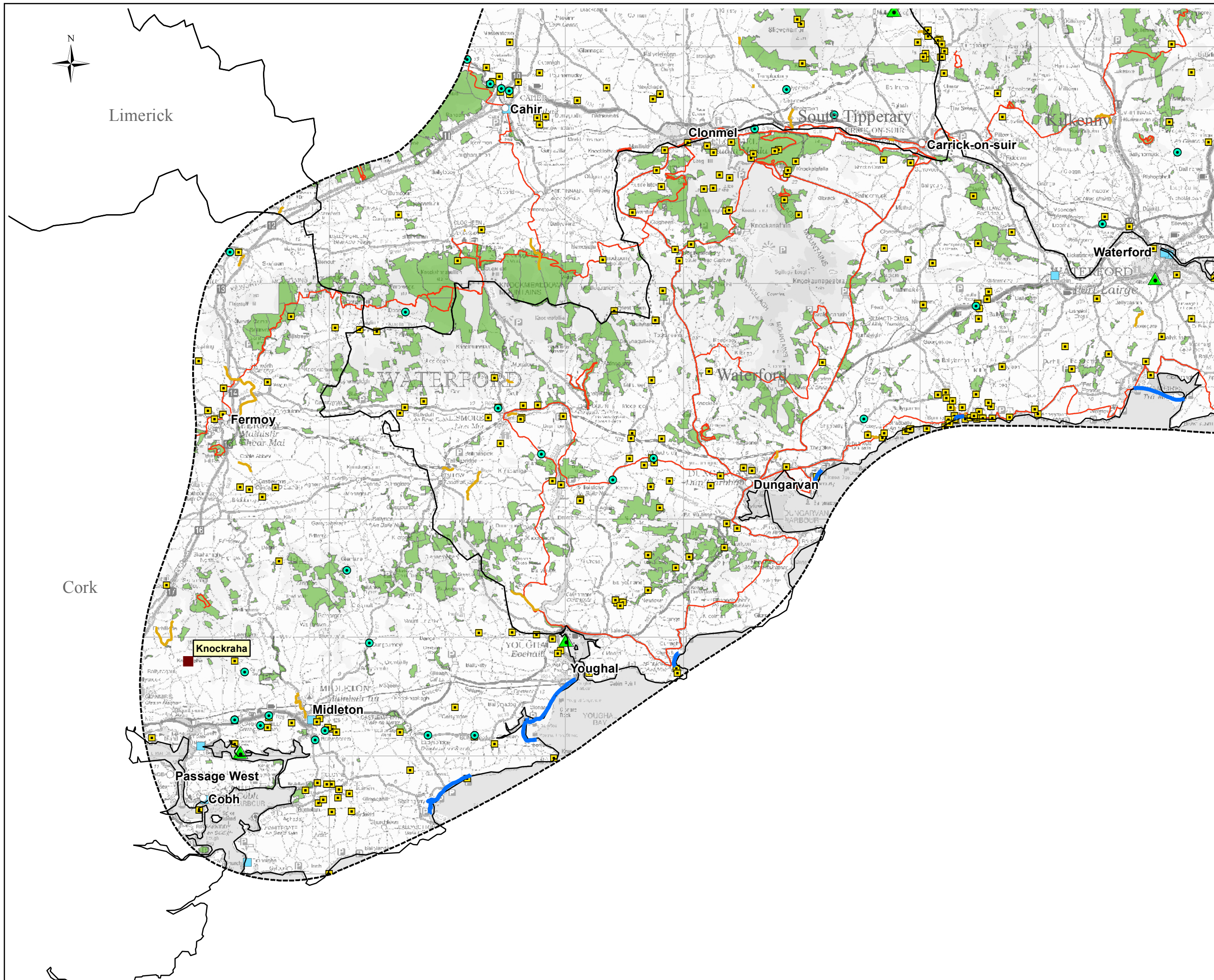
Title
**Land Use
 (Other)
 (Map 3 of 4)**

Figure 8.3.2 (1 - 4)

West Pier Business Campus, T +353 (0) 1 4882900
 Dun Laoghaire, F +353 (0) 1 2835678
 Co Dublin, Ireland, E ireland@rpsgroup.com
 W rpsgroup.com/ireland

Issue Details			
Drawn By: S. Khan	Project No.	MDR835	
Checked By: A. Gaughran	File Ref:	MDR0835Arc_EV0020F02	
Approved By: A. Gaughran	Drawing No.	Rev:	
Scale: 1:300,000 @ A3	EV0020	F02	
Date: 20/08/2012			

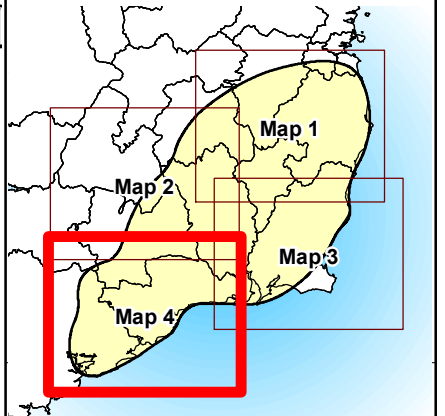
NOTE:
 1. This drawing is the property of RPS Group Ltd. It is a confidential document and must not be copied, used, or its contents divulged without prior written consent.
 2. Ordnance Survey Ireland Licence EN 0005012
 ©Copyright Government of Ireland.



Legend

- Study Area
- Major Town/City
- Project Nodal Point
- Landfill
- Quarry (Active)
- Mines
- Tourist Attractions
- Rivers for Drinking Water (WFD data)
- Recreational Beaches (WFD data)
- Walking & Cycling Trails
- Bord na Mona Bogs
- Coillte Forest Properties

Data Source:
 Environmental Protection Agency (EPA)
 Geological Survey of Ireland (GSI)
 Coillte
 Bord na Mona



Client



THE GRID LINK PROJECT

Title

**Land Use
(Other)
(Map 4 of 4)**

Figure 8.3.2 (1 - 4)



West Pier Business Campus, T +353 (0) 1 4882900
 Dun Laoghaire, F +353 (0) 1 2835678
 Co Dublin, Ireland. E ireland@rpsgroup.com
 W rpsgroup.com/ireland

Issue Details

Drawn By: S. Khan	Project No.: MDR835
Checked By: A. Gaughran	File Ref: MDR0835Arc_EV0020F02
Approved By: A. Gaughran	
Scale: 1:300,000 @ A3	Drawing No.: EV0020
Date: 20/08/2012	Rev: F02

NOTE:

1. This drawing is the property of RPS Group Ltd. It is a confidential document and must not be copied, used, or its contents divulged without prior written consent.
2. Ordnance Survey Ireland Licence EN 0005012 ©Copyright Government of Ireland.