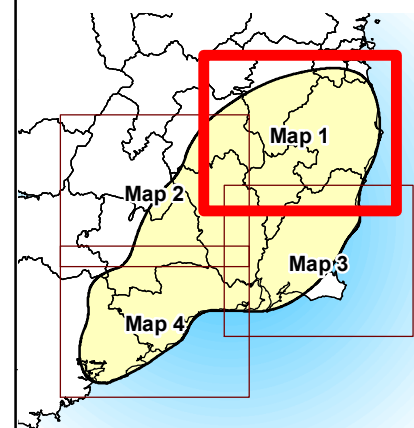


- ### Legend
- Study Area
  - Major Town/City
  - Project Nodal Point
  - Important Bird Areas
  - Bat Survey Sites (2000 - 2009)
  - Annex 1 Habitat (NPWS Data)
  - Annex 1 Habitat (SEA Report)
  - Natural Heritage Area (NHAs & pNHAs)
  - Ramsar Site

Data Source:  
 National Parks and Wildlife Service (NPWS)  
 Environmental Protection Agency (EPA)  
 Bat Conservation Ireland Ltd.  
 BirdWatch Ireland and Bird Life International




Client  


**THE GRID LINK PROJECT**

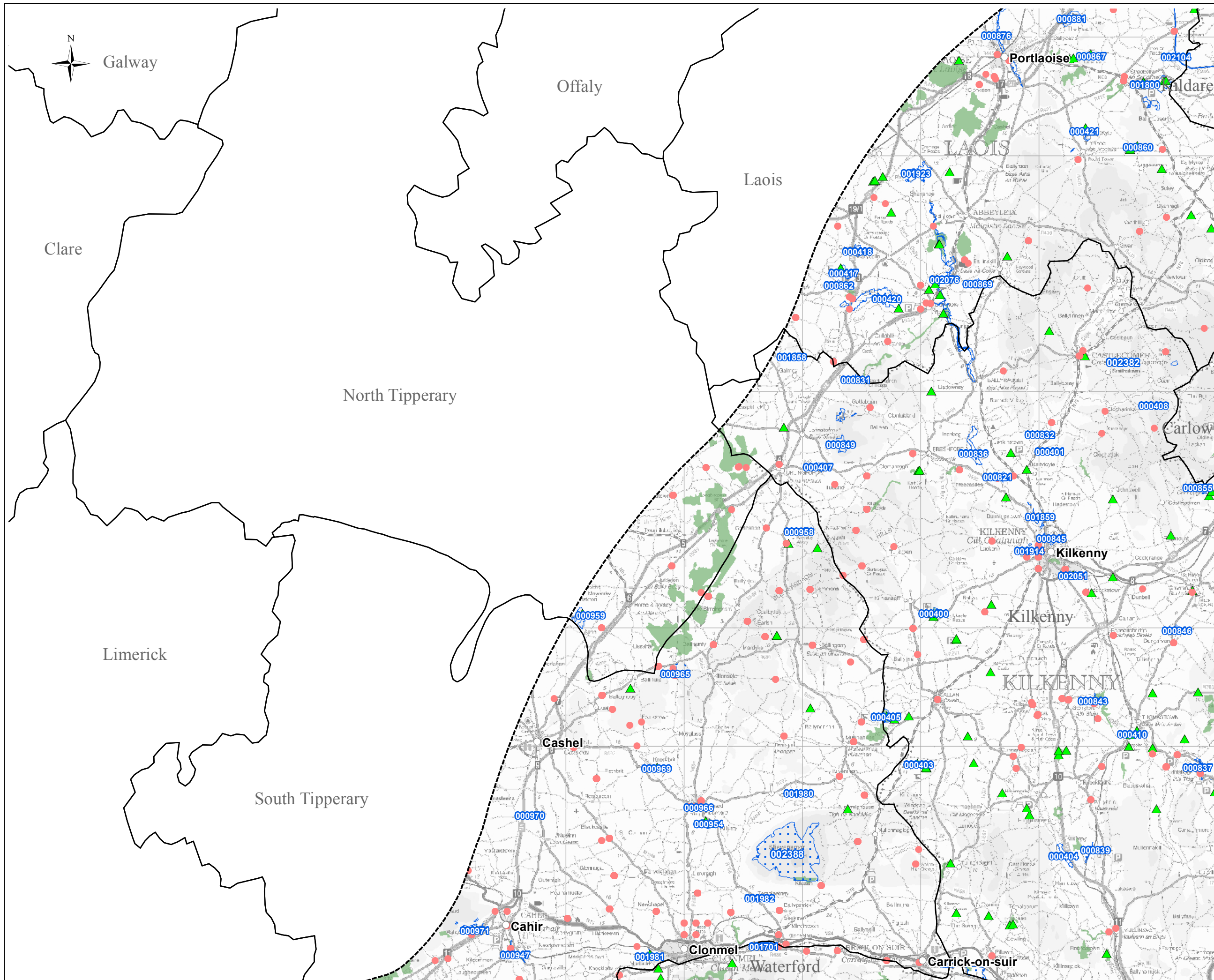
Title  
**Biodiversity Features (Terrestrial)**  
 (Map 1 of 4)

**Figure 8.6.2 (1 - 4)**

 West Pier Business Campus, T +353 (0) 1 4882900  
 Dun Laoghaire, F +353 (0) 1 2835676  
 Co Dublin, Ireland. E ireland@rpsgroup.com  
 W rpsgroup.com/ireland

Issue Details			
Drawn By: S. Khan	Project No.	MDR835	
Checked By: A. Gaughran	File Ref:	MDR0835Arc_EV0031F02	
Approved By: A. Gaughran	Drawing No.	EV0031	Rev: F02
Scale: 1:300,000 @ A3	Date:	20/08/2012	

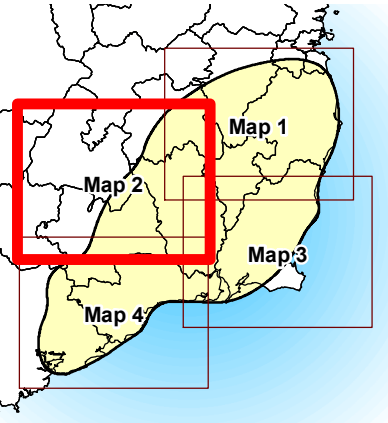
**NOTE:**  
 1. This drawing is the property of RPS Group Ltd. It is a confidential document and must not be copied, used, or its contents divulged without prior written consent.  
 2. Ordnance Survey Ireland Licence EN 0005012  
 ©Copyright Government of Ireland.



**Legend**

- Study Area
- Major Town/City
- Project Nodal Point
- Important Bird Areas
- Bat Survey Sites (2000 - 2009)
- Annex 1 Habitat (NPWS Data)
- Annex 1 Habitat (SEA Report)
- Natural Heritage Area (NHAs & pNHAs)
- Ramsar Site

Data Source:  
National Parks and Wildlife Service (NPWS)  
Environmental Protection Agency (EPA)  
Bat Conservation Ireland Ltd.  
BirdWatch Ireland and Bird Life International



Client



THE GRID LINK PROJECT

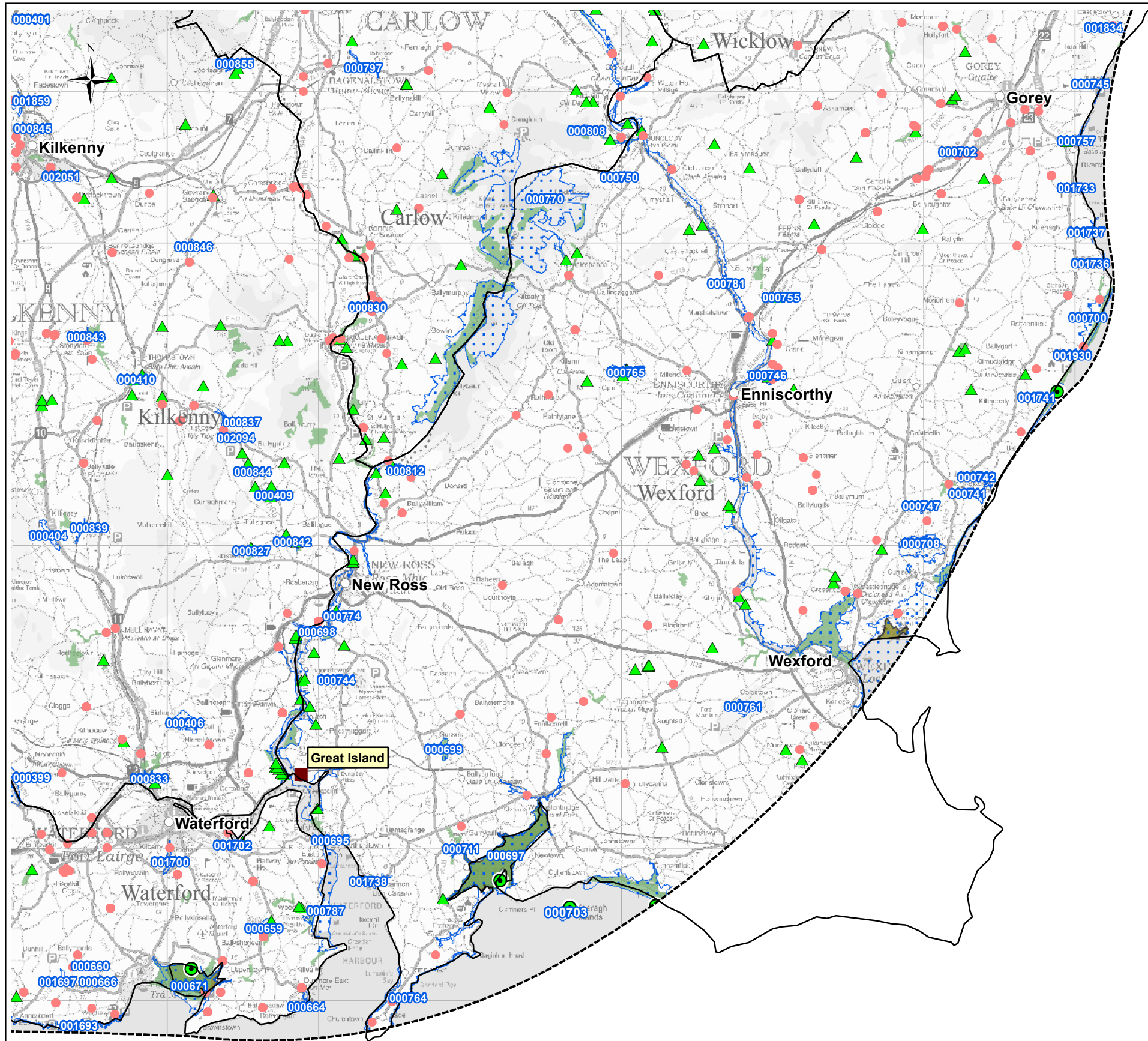
Title  
**Biodiversity Features (Terrestrial)**  
(Map 2 of 4)

Figure 8.6.2 (1 - 4)

**RPS** West Pier Business Campus, T +353 (0) 1 4882900  
Dun Laoghaire, F +353 (0) 1 2835678  
Co Dublin, Ireland. E ireland@rpsgroup.com  
W rpsgroup.com/ireland

Issue Details			
Drawn By: S. Khan	Project No.	MDR835	
Checked By: A. Gaughran	File Ref:	MDR0835Arc_EV0031F02	
Approved By: A. Gaughran	Drawing No.	EV0031	Rev: F02
Date: 20/08/2012			

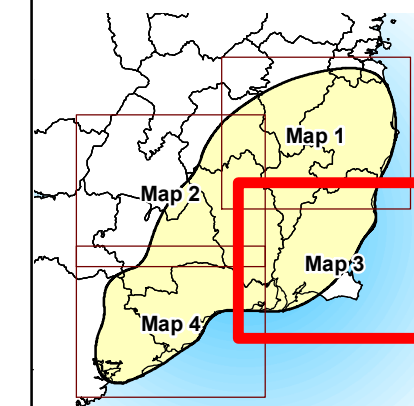
**NOTE:**  
1. This drawing is the property of RPS Group Ltd. It is a confidential document and must not be copied, used, or its contents divulged without prior written consent.  
2. Ordnance Survey Ireland Licence EN 0005012  
©Copyright Government of Ireland.



### Legend

- Study Area
- Major Town/City
- Project Nodal Point
- Important Bird Areas
- Bat Survey Sites (2000 - 2009)
- Annex 1 Habitat (NPWS Data)
- Annex 1 Habitat (SEA Report)
- Natural Heritage Area (NHAs & pNHAs)
- Ramsar Site

Data Source:  
 National Parks and Wildlife Service (NPWS)  
 Environmental Protection Agency (EPA)  
 Bat Conservation Ireland Ltd.  
 BirdWatch Ireland and Bird Life International



Client



THE GRID LINK PROJECT

Title

## Biodiversity Features (Terrestrial)

(Map 3 of 4)

Figure 8.6.2 (1 - 4)

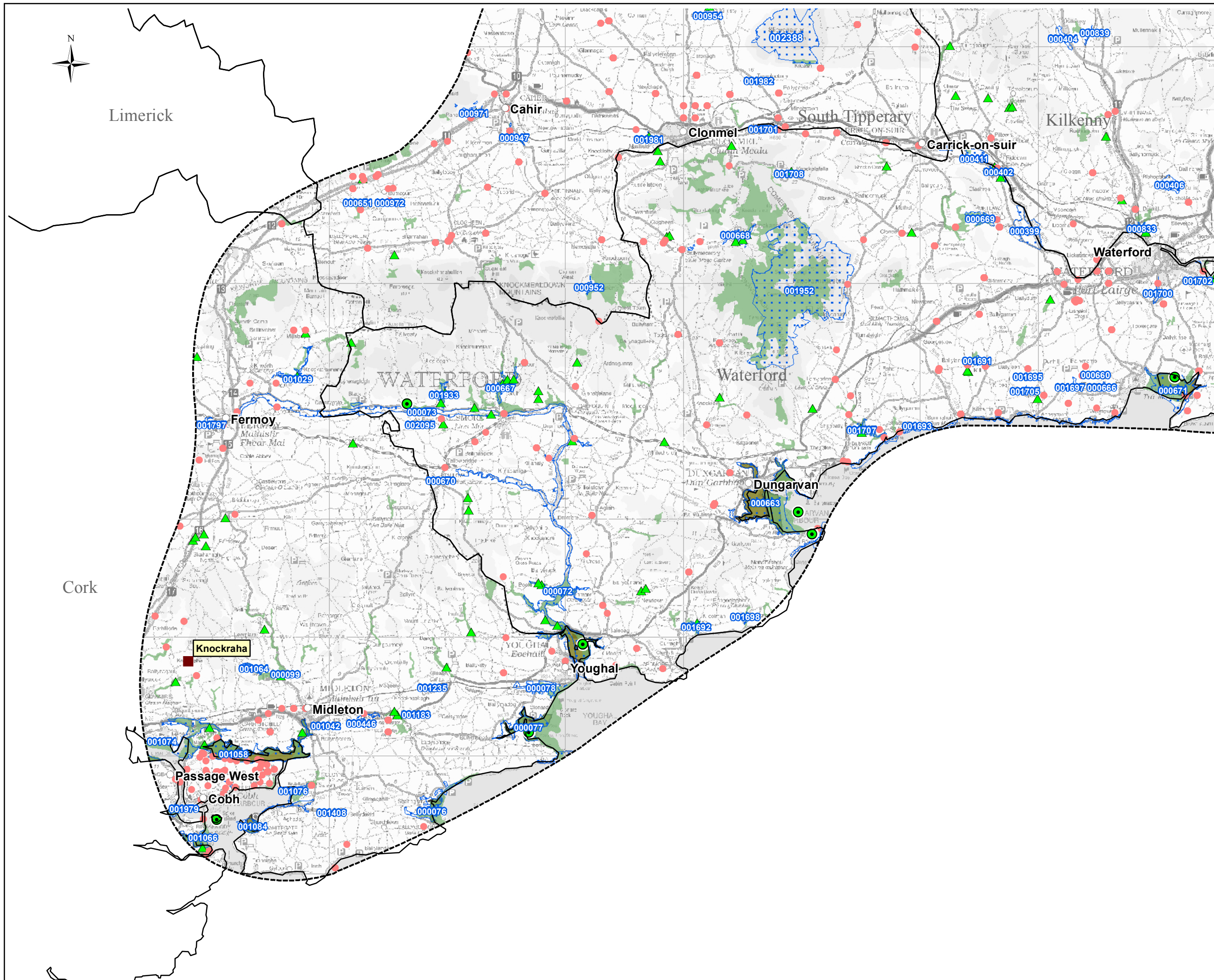
RPS West Pier Business Campus, T +353 (0) 1 4882900  
 Dun Laoghaire, F +353 (0) 1 2835678  
 Co Dublin, Ireland. E ireland@rpsgroup.com  
 W rpsgroup.com/ireland

### Issue Details

Drawn By: S. Khan	Project No. MDR835
Checked By: A. Gaughran	File Ref: MDR0835Arc_EV0031F02
Approved By: A. Gaughran	Drawing No. EV0031
Scale: 1:300,000 @ A3	Rev: F02
Date: 20/08/2012	

### NOTE:

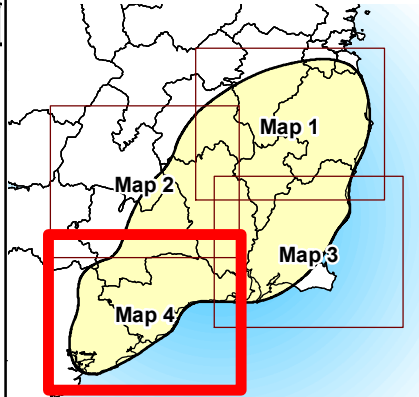
- This drawing is the property of RPS Group Ltd. It is a confidential document and must not be copied, used, or its contents divulged without prior written consent.
- Ordnance Survey Ireland Licence EN 0005012 ©Copyright Government of Ireland.



**Legend**

- Study Area
- Major Town/City
- Project Nodal Point
- Important Bird Areas
- Bat Survey Sites (2000 - 2009)
- Annex 1 Habitat (NPWS Data)
- Annex 1 Habitat (SEA Report)
- Natural Heritage Area (NHAs & pNHAs)
- Ramsar Site

Data Source:  
 National Parks and Wildlife Service (NPWS)  
 Environmental Protection Agency (EPA)  
 Bat Conservation Ireland Ltd.  
 BirdWatch Ireland and Bird Life International



Client



THE GRID LINK PROJECT

Title

**Biodiversity Features  
(Terrestrial)**  
(Map 4 of 4)

Figure 8.6.2 (1 - 4)

**RPS** West Pier Business Campus, T +353 (0) 1 4882900  
 Dun Laoghaire, F +353 (0) 1 2835678  
 Co Dublin, Ireland. E ireland@rpsgroup.com  
 W rpsgroup.com/ireland

**Issue Details**

Drawn By: S. Khan	Project No. MDR835
Checked By: A. Gaughran	File Ref: MDR0835Arc_EV0031F02
Approved By: A. Gaughran	
Scale: 1:300,000 @ A3	Drawing No. Rev:
Date: 20/08/2012	EV0031 F02

**NOTE:**

1. This drawing is the property of RPS Group Ltd. It is a confidential document and must not be copied, used, or its contents divulged without prior written consent.
2. Ordnance Survey Ireland Licence EN 0005012 ©Copyright Government of Ireland.