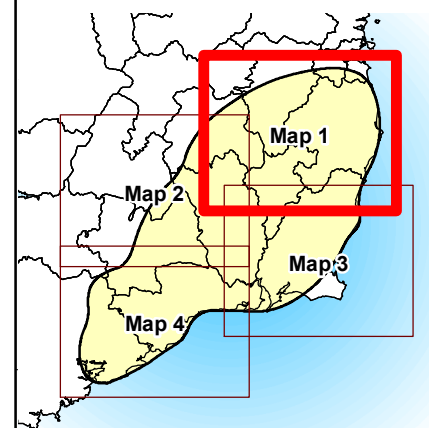


**Legend**

- Study Area
- Major Town/City
- Project Nodal Point
- Nutrient Sensitive Area
- Nutrient Sensitive River
- Salmonid River
- Freshwater Pearl Mussels
- Shellfish Areas

Data Source:  
Environmental Protection Agency (EPA)



Client

**THE GRID LINK PROJECT**

Title  
**Biodiversity Features (Aquatic)**  
(Map 1 of 4)

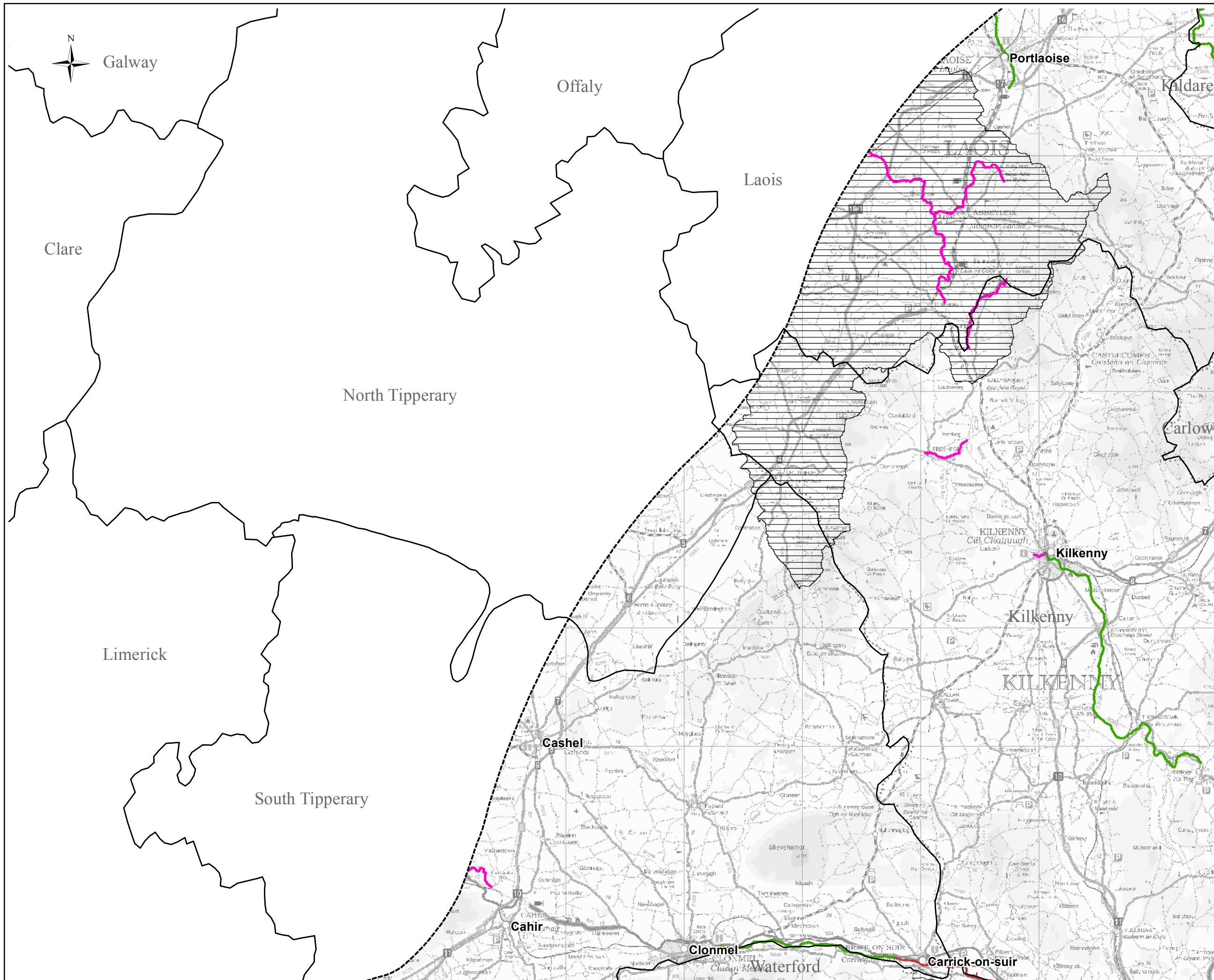
**Figure 8.6.3 (1 - 4)**

West Pier Business Campus, T +353 (0) 1 4882900  
Dun Laoghaire, F +353 (0) 1 2835678  
Co Dublin, Ireland. E ireland@rpsgroup.com  
W rpsgroup.com/ireland

Issue Details			
Drawn By: S. Khan	Project No.	MDR835	
Checked By: A. Gaughran	File Ref:	MDR0835Arc_EV0032F02	
Approved By: A. Gaughran	Drawing No.	EV0032	Rev: F02
Date: 20/08/2012			

**NOTE:**

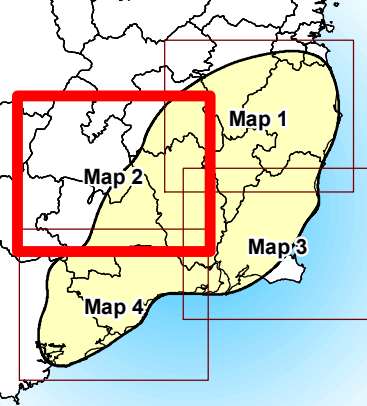
- This drawing is the property of RPS Group Ltd. It is a confidential document and must not be copied, used, or its contents divulged without prior written consent.
- Ordnance Survey Ireland Licence EN 0005012 ©Copyright Government of Ireland.



**Legend**

- Study Area
- Major Town/City
- Project Nodal Point
- Nutrient Sensitive Area
- Nutrient Sensitive River
- Salmonid River
- Freshwater Pearl Mussels
- Shellfish Areas

Data Source:  
Environmental Protection Agency (EPA)



Client



THE GRID LINK PROJECT

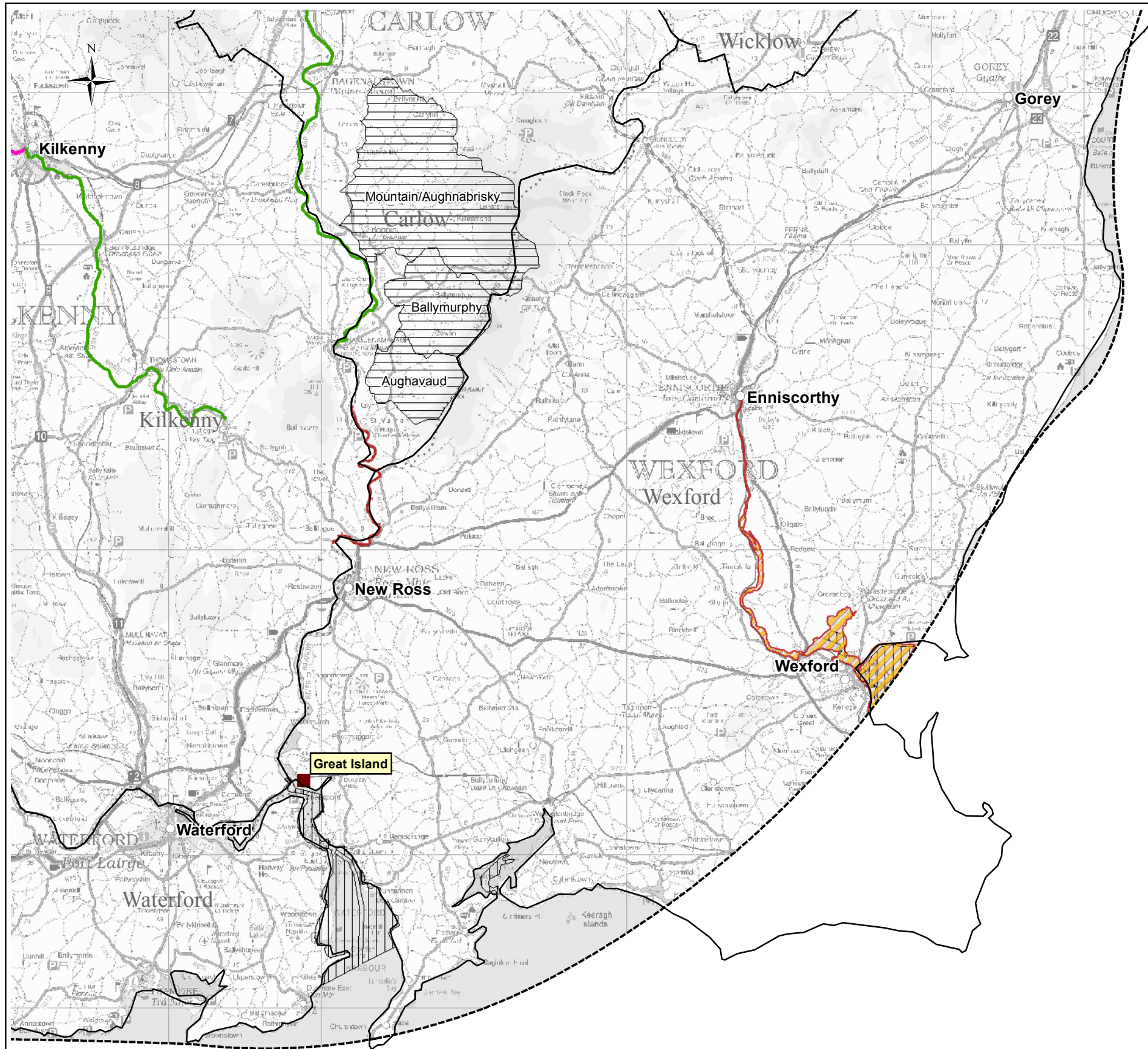
Title  
**Biodiversity Features (Aquatic)**  
(Map 2 of 4)

Figure 8.6.3 (1 - 4)

**RPS** West Pier Business Campus, T +353 (0) 1 4882900  
Dun Laoghaire, F +353 (0) 1 2835678  
Co Dublin, Ireland. E ireland@rpsgroup.com  
W rpsgroup.com/ireland

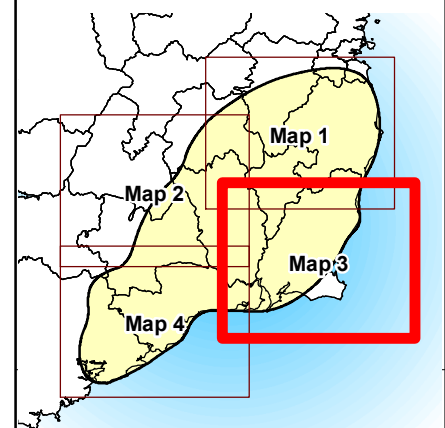
Issue Details			
Drawn By: S. Khan	Project No.	MDR835	
Checked By: A. Gaughran	File Ref:	MDR0835Arc_EV0032F02	
Approved By: A. Gaughran	Drawing No.	Rev:	
Date: 20/08/2012	EV0032	F02	

**NOTE:**  
1. This drawing is the property of RPS Group Ltd. It is a confidential document and must not be copied, used, or its contents divulged without prior written consent.  
2. Ordnance Survey Ireland Licence EN 0005012  
©Copyright Government of Ireland.



- ### Legend
- Study Area
  - Major Town/City
  - Project Nodal Point
  - Nutrient Sensitive Area
  - Nutrient Sensitive River
  - Salmonid River
  - Freshwater Pearl Mussels
  - Shellfish Areas

Data Source:  
Environmental Protection Agency (EPA)



**THE GRID LINK PROJECT**

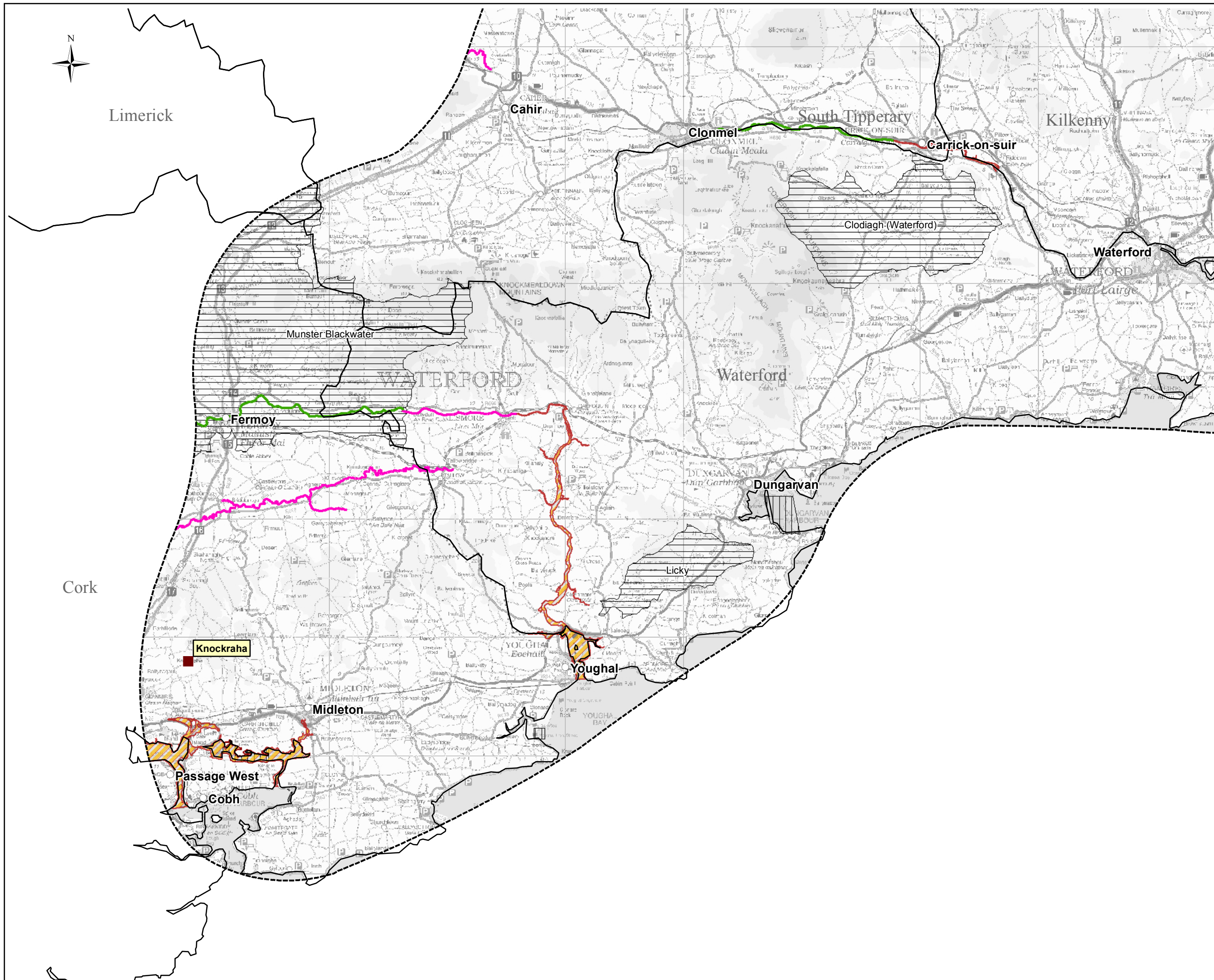
Title  
**Biodiversity Features (Aquatic)**  
(Map 3 of 4)

**Figure 8.6.3 (1 - 4)**

West Pier Business Campus, T +353 (0) 1 4882900  
Dun Laoghaire, F +353 (0) 1 2835678  
Co Dublin, Ireland. E ireland@rpsgroup.com  
W rpsgroup.com/ireland

Issue Details			
Drawn By: S. Khan	Project No.	MDR835	
Checked By: A. Gaughran	File Ref:	MDR0835Arc_EV0032F02	
Approved By: A. Gaughran	Drawing No.	Rev:	
Date: 20/08/2012	EV0032	F02	

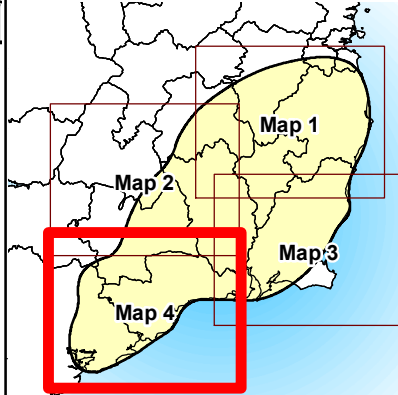
**NOTE:**  
1. This drawing is the property of RPS Group Ltd. It is a confidential document and must not be copied, used, or its contents divulged without prior written consent.  
2. Ordnance Survey Ireland Licence EN 0005012  
©Copyright Government of Ireland.



**Legend**

- Study Area
- Major Town/City
- Project Nodal Point
- Nutrient Sensitive Area
- Nutrient Sensitive River
- Salmonid River
- Freshwater Pearl Mussels
- Shellfish Areas

Data Source:  
Environmental Protection Agency (EPA)



Client



THE GRID LINK PROJECT

Title

**Biodiversity Features  
(Aquatic)  
(Map 4 of 4)**

Figure 8.6.3 (1 - 4)

**RPS** West Pier Business Campus, T +353 (0) 1 4882900  
Dun Laoghaire, F +353 (0) 1 2835678  
Co Dublin, Ireland. E ireland@rpsgroup.com  
W rpsgroup.com/ireland

**Issue Details**

<b>Drawn By:</b> S. Khan	<b>Project No.:</b> MDR835
<b>Checked By:</b> A. Gaughran	<b>File Ref:</b> MDR0835Arc_EV0032F02
<b>Approved By:</b> A. Gaughran	
<b>Scale:</b> 1: 300,000 @ A3	<b>Drawing No.:</b> EV0032
<b>Date:</b> 20/08/2012	<b>Rev:</b> F02

**NOTE:**  
1. This drawing is the property of RPS Group Ltd. It is a confidential document and must not be copied, used, or its contents divulged without prior written consent.  
2. Ordnance Survey Ireland Licence EN 0005012  
©Copyright Government of Ireland.