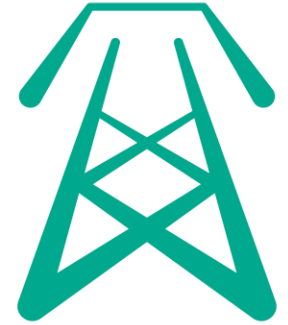


# Fingal to East Meath Grid Reinforcement

## Project Overview and Update

October 2024



# Who are EirGrid and What Do We Do?

- State-owned operators of Ireland's electricity transmission grid.
- We send power from where it is generated to where it is needed.
- We operate the wholesale electricity market.
- We operate electricity interconnectors with neighbouring countries.
- We do not generate electricity.
- We have a new role in offshore energy.



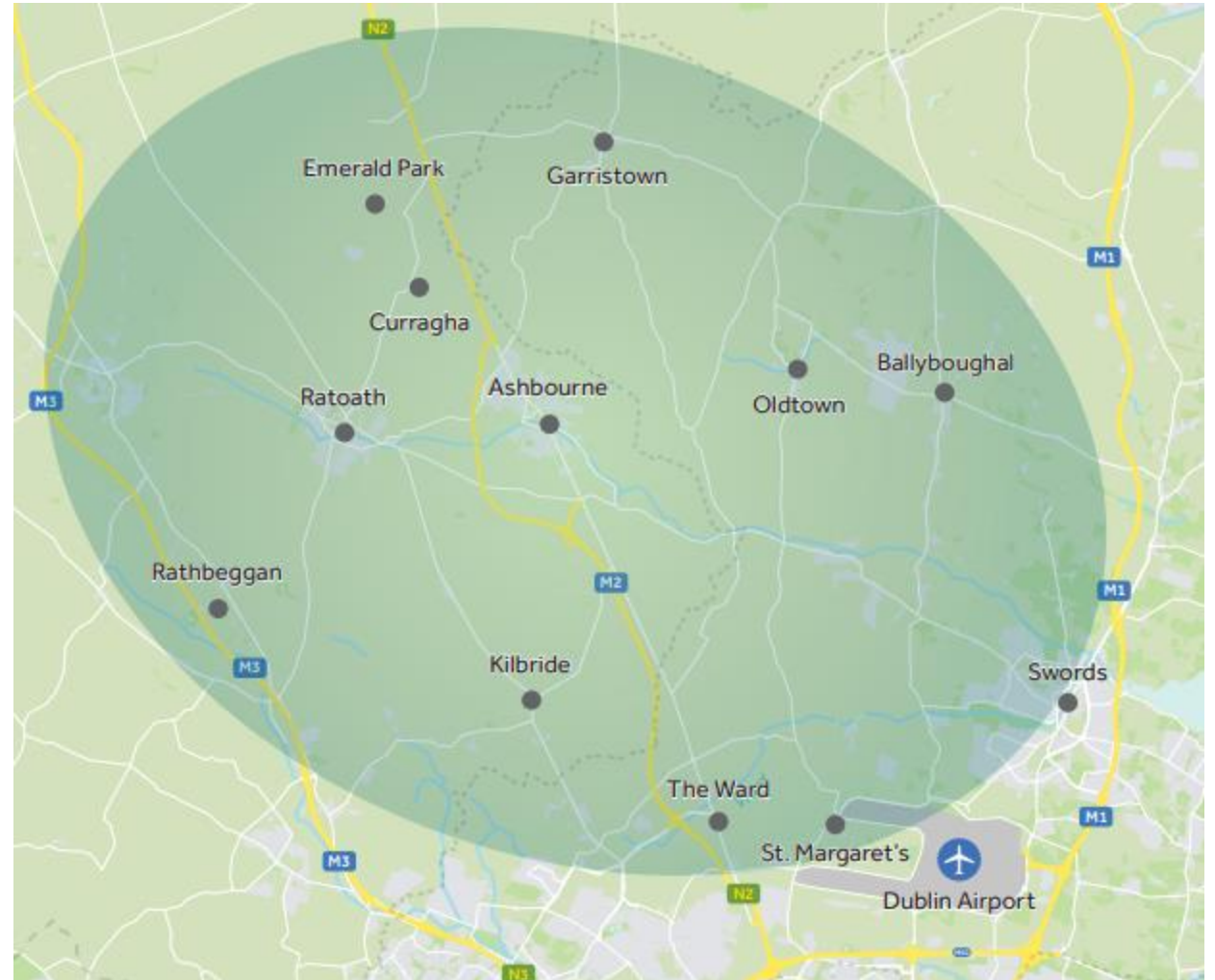
# Drivers for Fingal East Meath

**Current system nearing capacity** - Ensuring sustainable supply for communities, schools, and businesses

**Regional Growth:** East Meath and Fingal amongst fastest growing areas in Ireland (Census 2022)

**Increased electricity demand:**

- Residential and commercial expansion
- Electrification of heat and transportation
- Offshore renewable energy integration



# Project Benefits



## Economic

Contribute to the regional economy and support increased investment in the area.



## Community

Deliver community benefits in the areas that facilitate the project infrastructure.



## Local

Helping to meet increasing local transport, employment and housing requirements.



## Competition

Apply downward pressure on the cost of electricity.



## Sustainability

Help Ireland's transition to a low carbon energy future.

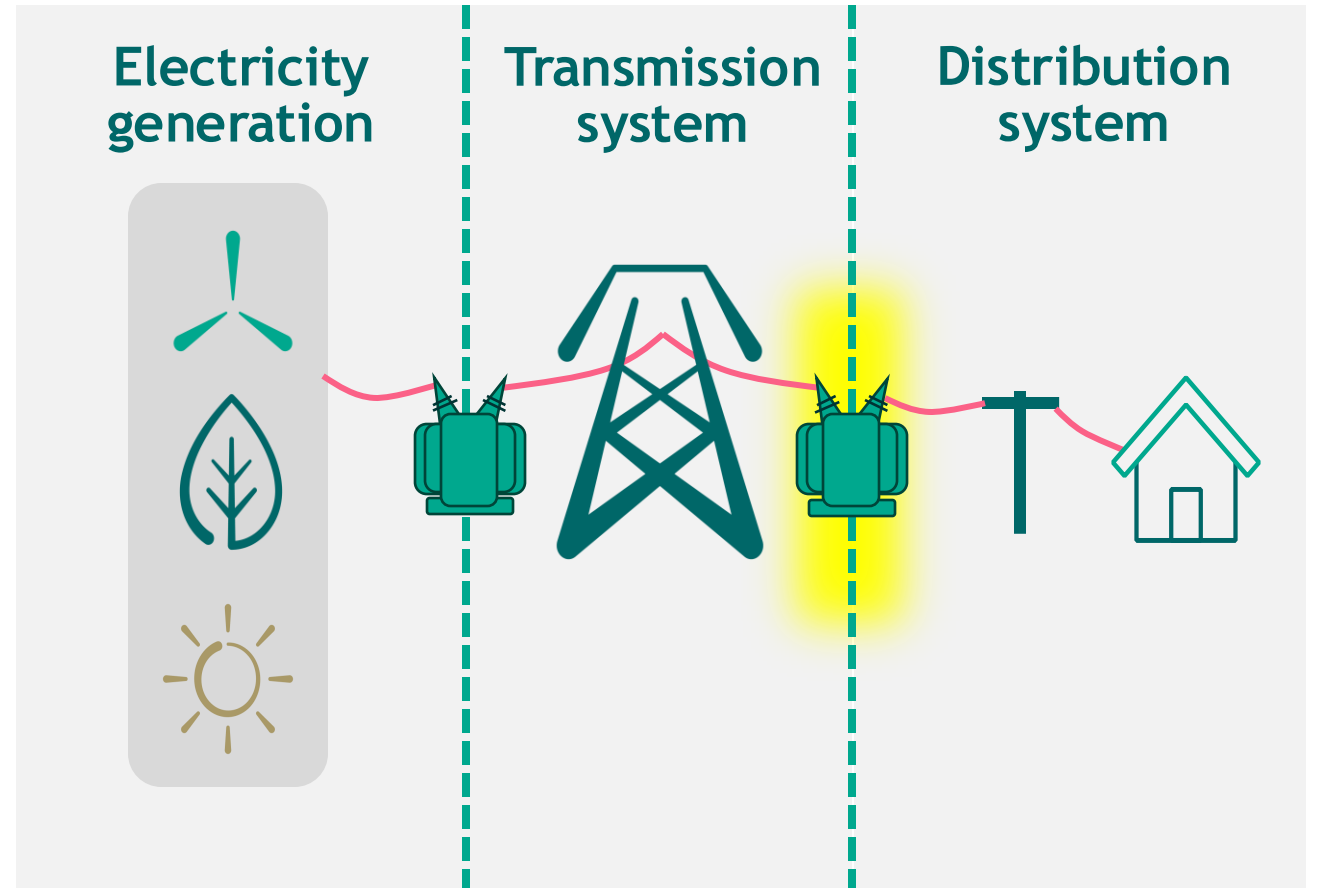


## Security of supply

Improve security of electricity supply across the island of Ireland.

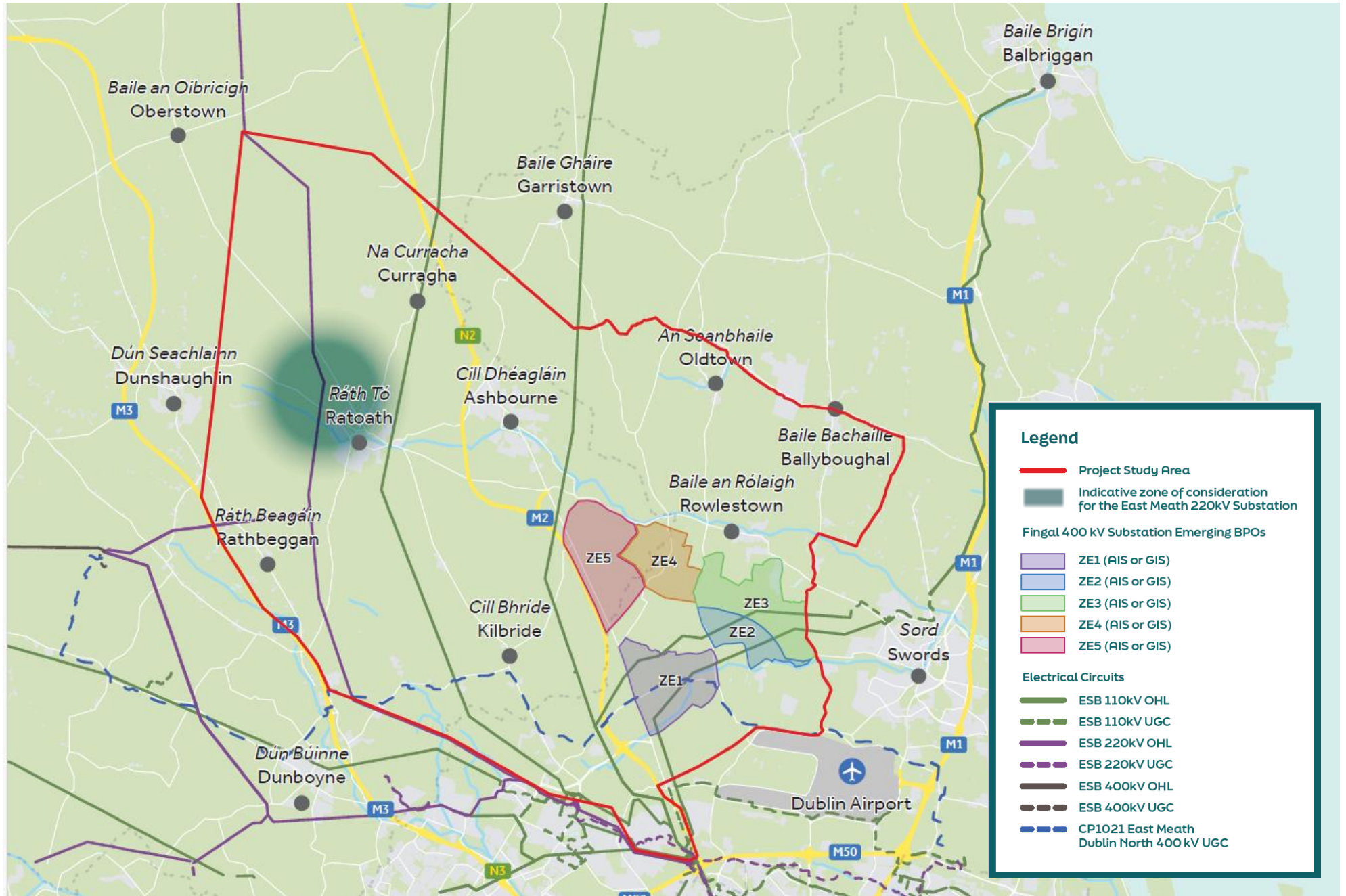
# What is Fingal East Meath?

- **New Fingal 400/220/110 kV substation** situated west of Swords, with new 400 kV loop-in circuits from the Fingal 400 kV substation to the proposed CP1021 East Meath-North Dublin 400 kV UGC;
- **New East Meath 220/110 kV substation**, in the vicinity of Ratoath, with new 220 kV loop-in circuits from the East Meath 220 kV substation to the Louth-Woodland 220 kV OHL; and
- **New 220 kV transmission circuit** between the proposed East Meath 220 kV substation and the Fingal 400 kV substation





# Project Study Area





# Substation technology options (AIS/GIS)



Example of gas insulated switchgear (GIS) substation - Kilpaddoge 220 kV Substation



Example of air insulated switchgear (AIS) substation - Cashla 220 kV Substation

Both technologies have distinct characteristics making them suitable for different scenarios based on land availability, future connection requirements, and regulatory compliance.



# Transmission circuit technology options (UGC/OHL)



Underground cable examples



Overhead line examples





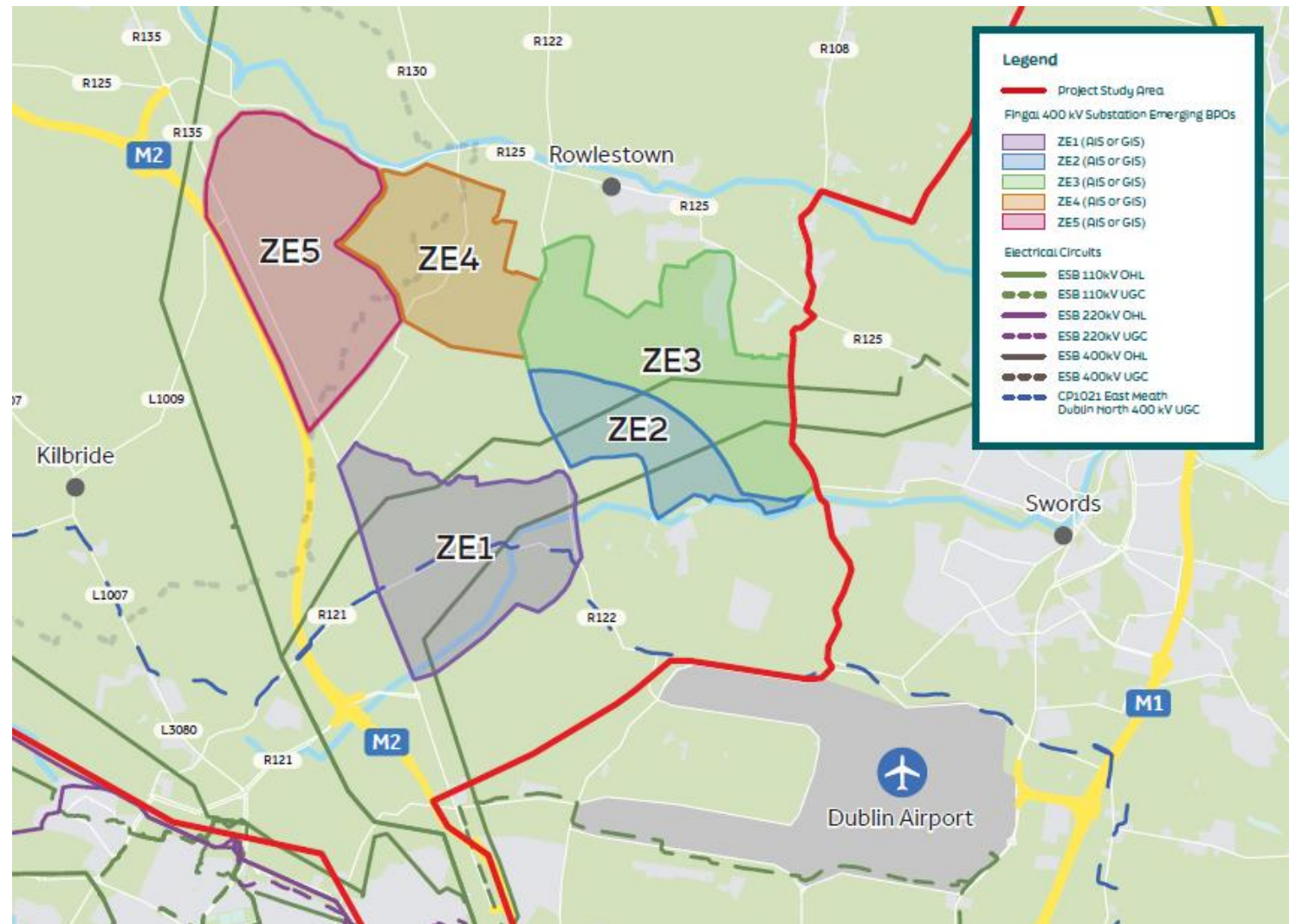
# What is happening now?



# Substation zones under consideration

- 5 substation zones
- 2 Technology Options (AIS and GIS)
- Detailed assessment of these Options using EirGrid's Multi-Criteria Analysis Guidelines:
  - Technical
  - Economic
  - Deliverability
  - Environmental
  - Socio - Economic

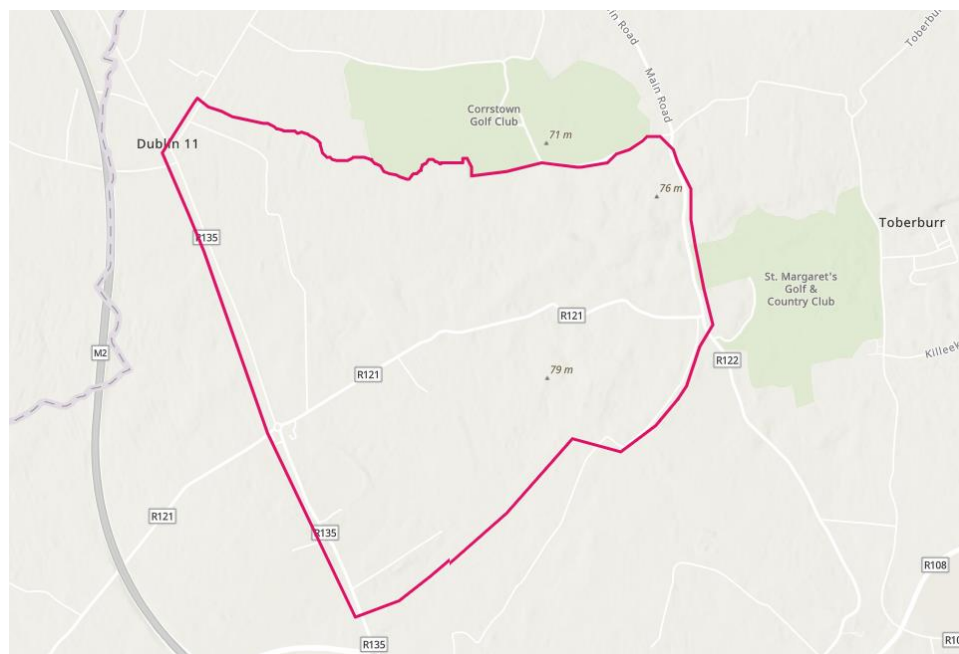
**Conclusion :** Total of 10 options being brought forward to Step 4



# Substation zones under consideration - Zone 1

## Zone 1 Situated in Fingal County Council border

- Regional Roads: Bordered by R135 on the West/R122 on East
- Closest to Proposed East Meath-North Dublin 400 kV Underground Cable development.
- Part of Zone 1 is located within the Dublin Airport Outer Public Safety Zone
- Boundary at (excluding) St. Margaret's Golf & Country Club on West and Corrstown on North

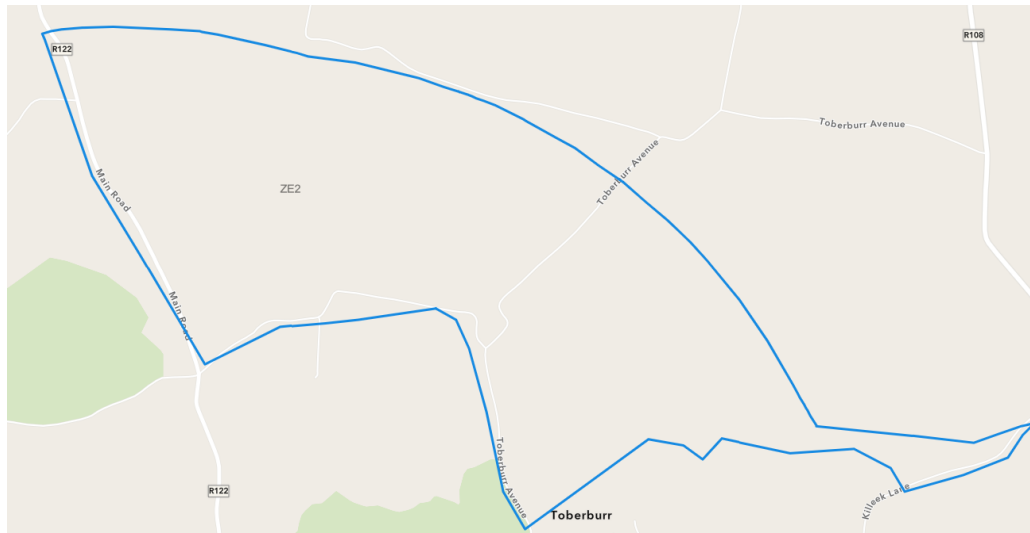




# Substation zones under consideration - Zone 2

## Zone 2 Situated in Fingal County Council border

- Regional Roads: Bordered by R122 on the west
- Part of Zone 2 is located within the Dublin Airport Outer Public Safety Zone
- To the North/East: Proximity to EirGrid's Proposed East Meath-North Dublin 400 kV Underground Cable development.



# Substation zones under consideration - Zone 3



## Zone 3 Situated in Fingal County Council border

- Regional Roads: Bordered by R122 on the west and R108 on East.
- Part of Zone 3 is located within the Dublin Airport Outer Public Safety Zone
- To the North: Residential areas and the town of Rath.
- To the South: Borders Zone 2





# Substation zones under consideration - Zone 4

## Zone 4 Situated in both Fingal and Meath County Council borders

- Regional Roads: Bordered by R122 on East and R125 on North
- To the South: 1km to North of Corrstown Golf club
- To the West: Borders Zone 5

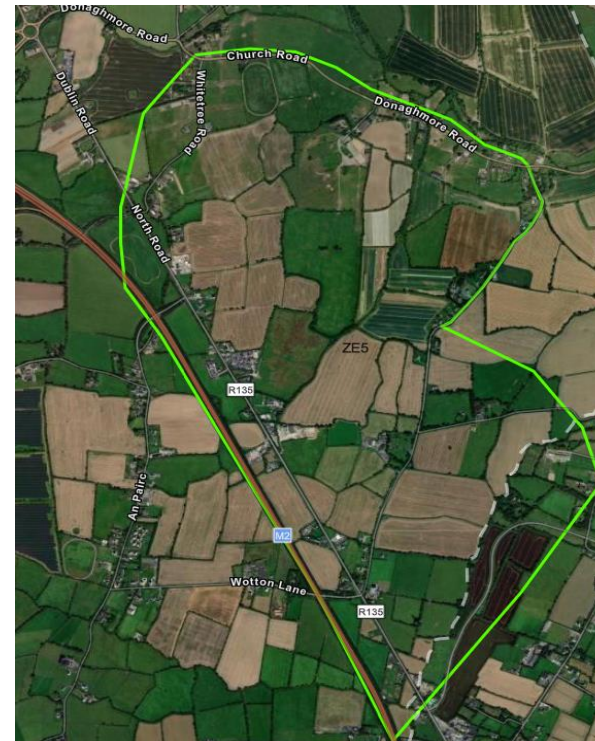
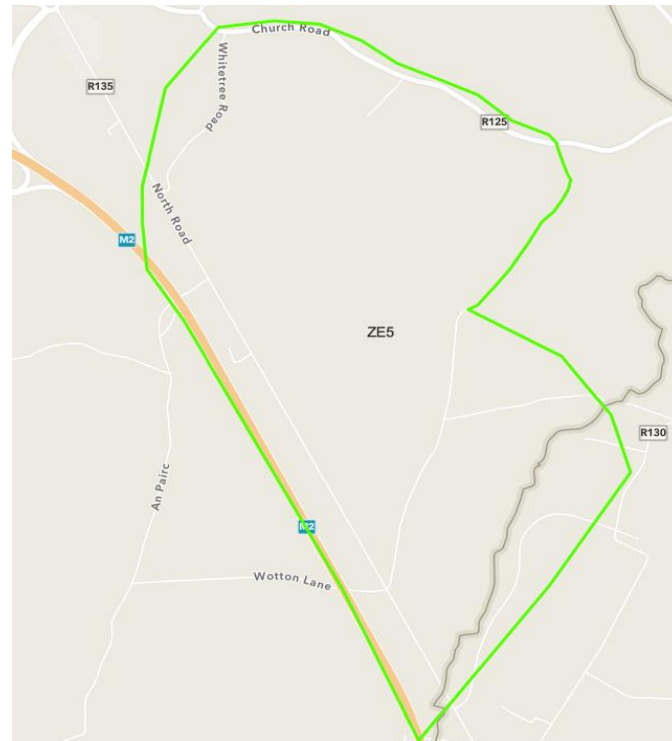




# Substation zones under consideration - Zone 5

**Zone 5 Largely situated in Meath County Council border**  
(500 m of the eastern boundary lies in Fingal)

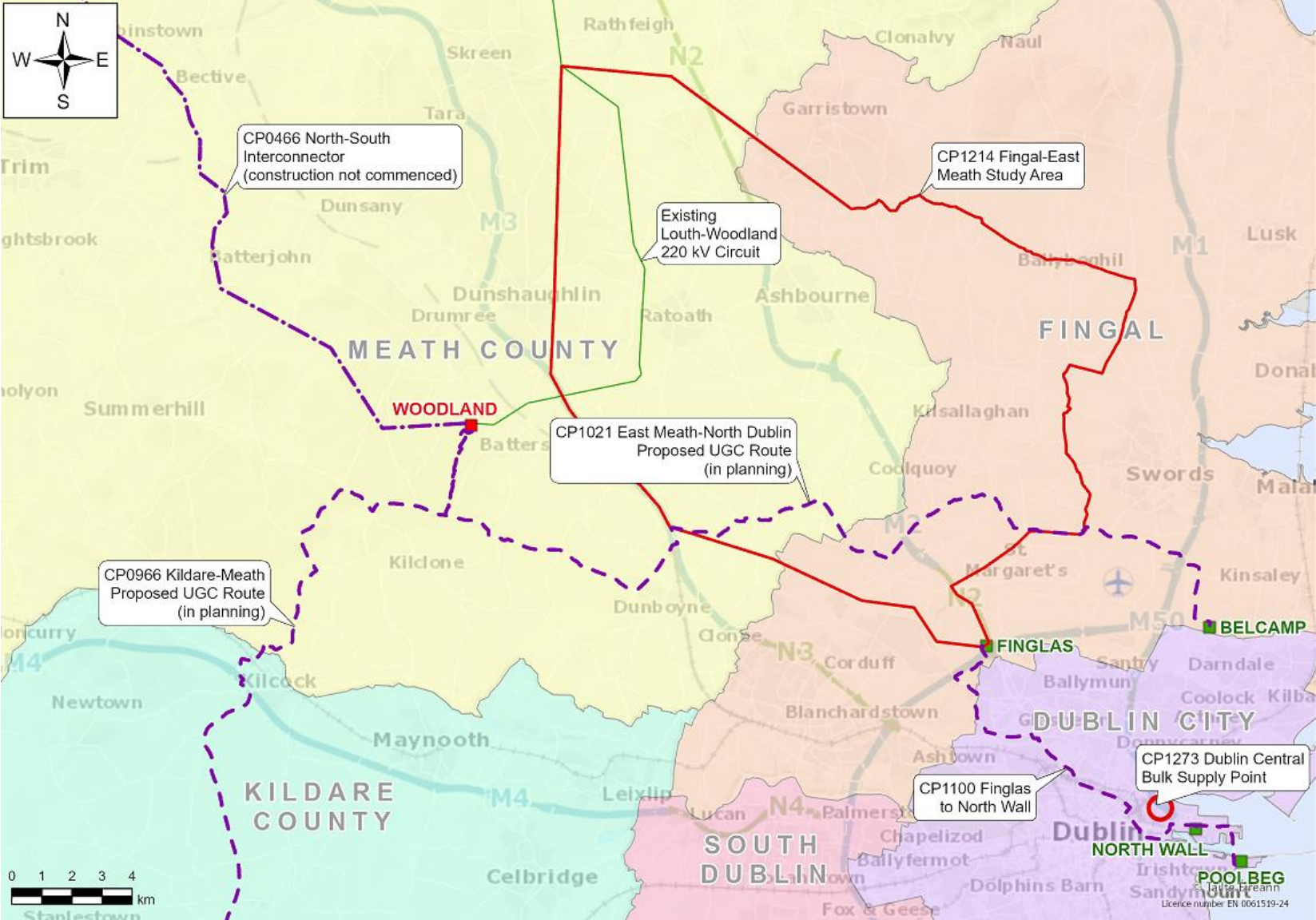
- Regional Roads: Bordered by M2 on West/Southwest. Bordered by R125 for part north. Bordered by Local Road on South.
- To the South: Residential areas



# Fingal to East Meath Grid Reinforcement

Other EirGrid Projects in the region

# Other EirGrid Projects in the region





# Fingal to East Meath Grid Reinforcement

Consultation information

# Information Events

Visit one of our face-to-face public information events being held at the following locations across the proposed routes to find out more and speak to experts within the team.



## **Wednesday 16th October,**

11.00am – 7.00pm

St. Margarets GAA, Ballystrahan, St. Margarets, Co. Dublin, K67 EY27



## **Tuesday 22nd October,**

11.00am – 7.00pm

Coolquoy Lodge, Coolquoy Common, The Ward, Co. Dublin, D11 W6NF



## **Tuesday 29th October,**

11.00am – 7.00pm

Roganstown Golf and Country Club, Roganstown, Swords, Co. Dublin, K67 P2E4

# Online Webinars

Attend an hour-long online webinar where we will present details of the project followed by an open Q&A.

The webinar will be held on **24th October 2024** at 7.00-8.00pm, on Zoom.

Find out more information and register for this webinar at [EirGrid.ie/FingalEastMeath](https://EirGrid.ie/FingalEastMeath)

# Step 3 Public Consultation, 8<sup>th</sup> October to 8<sup>th</sup> November 2024

You can get involved in the consultation and provide feedback in a range of ways:

- Attending an information event:
- EirGrid's consultation portal here: [Make a Submission](#)
- Email your submissions to [FEM@eirgrid.ie](mailto:FEM@eirgrid.ie)





Thank you

Q&A

