



Fingal to East Meath Grid Reinforcement

The Ward 400 kV Substation

Project Update May 2026

EirGrid.ie



Who is EirGrid and what do we do?

EirGrid is a state-owned company that develops, manages, and operates Ireland's electricity grid. We are responsible for the safe, secure, and reliable supply of Ireland's electricity, bringing power from where it is generated to the distribution network that supplies the electricity we use every day in homes, businesses, schools and hospitals.

EirGrid is responsible for leading the secure transition of the electricity grid to a sustainable, low-carbon future.



Fingal to East Meath Grid Reinforcement Project

East Meath and Fingal are among the fastest-growing regions in the country (as per Census 2022), and with this growth comes a greater requirement for electricity. EirGrid is planning new infrastructure to meet this need, so that electricity supply can be adequately futureproofed. This will help support residential development and economic growth across the region, and help the country reach its renewable energy targets.

The Fingal to East Meath Grid Reinforcement is a proposed project to accommodate the

continued growth in electricity demand in the region, which is being driven by several sectors.

This includes:

- residential housing;
- commercial and industrial development;
- electrification of heat (heat pumps) and transportation (electric vehicles and public transport); and
- the integration of offshore renewable energy connections.

The existing transmission infrastructure in the region is nearing its capacity limit. To ensure a reliable and sustainable electricity supply for communities, residents, schools, and businesses, new infrastructure is urgently needed.

Key to this project is the development of the new Ward 400 kV Substation and future connecting circuits in the Fingal area, to the west of Swords.



Project Benefits

This grid reinforcement project will provide additional capacity to deliver electricity where it's needed most in the future. It is a critical addition to the electricity network, supporting growth and economic development across the region. By strengthening the grid, these projects will help businesses, schools, hospitals, homes, and farms to maintain a secure supply of electricity, while also enabling the integration of more renewable energy sources.



Economic

The project will facilitate the integration of more renewable electricity onto the grid which will contribute to the regional economy and support increased investment in the area.



Sustainability

Help Ireland's transition to a low carbon energy future.



Security of supply

Improve security of electricity supply across the island of Ireland.



Community

Support communities that host project infrastructure by delivering meaningful local benefits.



Local

Help to meet increasing residential, employment and housing requirements.



What is happening now?

The Ward 400 kV Substation is being developed in line with EirGrid's 6-Step approach to Grid Development (outlined below), which guides the process of identifying and delivering the most effective solution to meet the outlined needs.

Currently, the development of this substation is in Step 4 of this process. The focus of Step 4 is to determine the best performing location to host the proposed substation.



The Ward 400 kV Substation

The Ward 400 kV Substation will take higher-voltage electricity (400 kV and 220 kV) and lower it to 110 kV. This electricity can then be safely distributed on the network to be used by homes, businesses and industry.

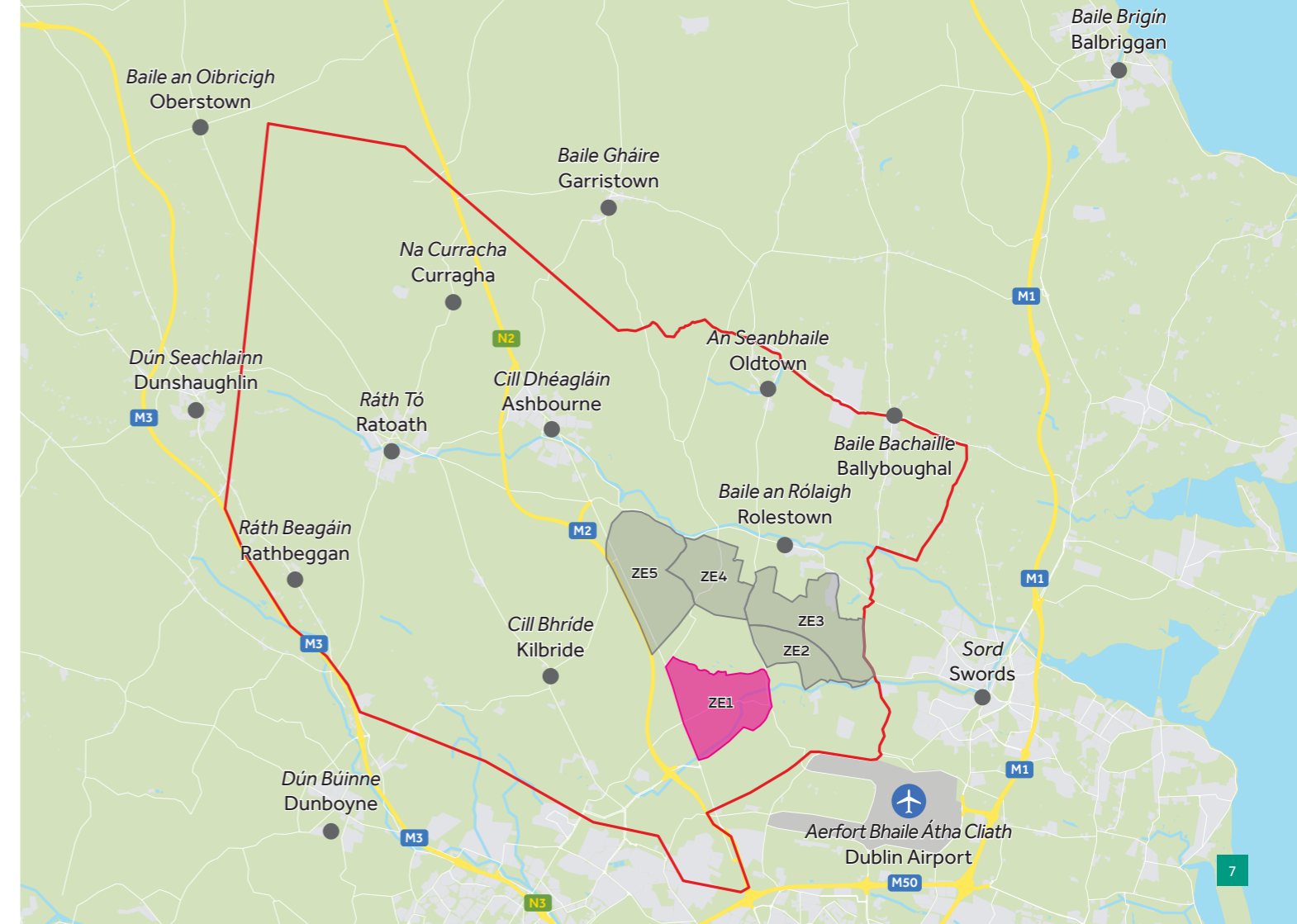
The project will include:

- A new 400/220/110 kV substation
- A connection (loop-in) to the consented East Meath–North Dublin 400 kV underground cable between Woodland and Belcamp substations (An Coimisiún Pleanála Ref: 319422).

In October and November 2024, EirGrid held a public consultation campaign to help determine the location and technology of this substation. This consultation, along with stakeholder and landowner engagement, environmental, economic, and technical factors, determined the most appropriate zone as ZE1.

Gas Insulated Switchgear (GIS) substation technology was selected as the most appropriate technology option. This was announced in February 2025.

Gas-insulated substations (GIS) are housed indoors in dedicated buildings, making them compact and less affected by environmental conditions, while air-insulated substations rely on open air around their equipment, so they are larger and more exposed to weather.



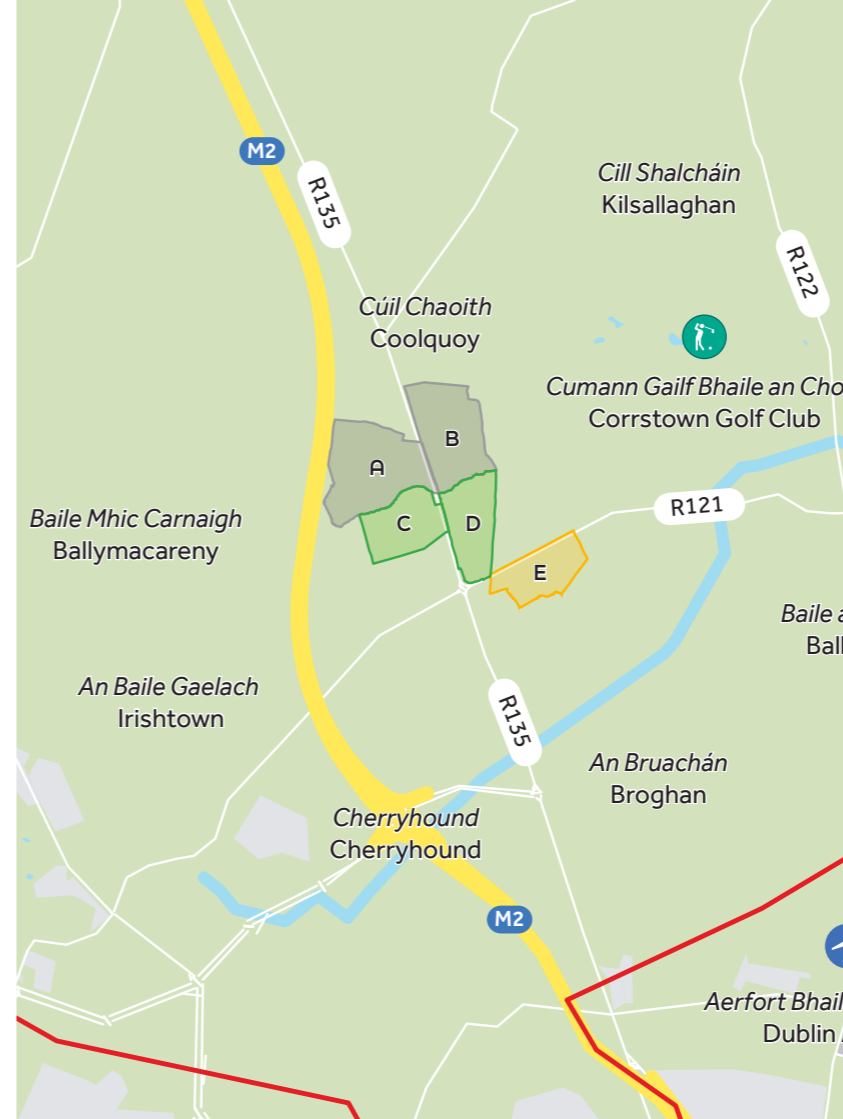
Through ongoing engagement with landowners, potential sites were identified in ZE1. A high level risk assessment was then carried out to confirm which sites might be suitable for the development of the Ward 400 kV Substation. A list of five potential sites was identified, shown as A-E in the map.

Given that the proposed consented East Meath-North Dublin 400 kV underground cable is situated farthest from Site A and Site B, and taking other constraints into account, both sites were deemed unsuitable and were not considered for further consideration.

Further engagement, a comprehensive Multi-Criteria Assessment (MCA) process **for sites C, D and E**, site investigations and surveys has resulted in the identification of Site E as the best performing option for the construction of the Ward 400 kV Substation. The reasons for this decision are listed below and full details on how this decision was reached are set out in **The Ward 400 kV Substation Step 4 Report** which is available on the EirGrid website.

- Site E has enough space for the substation and future expansion, with lower construction risk than other options.
- Site E is located beside the R121, which shortens connection distances to the consented East Meath-North Dublin 400 kV underground cable than the other options.
- Site E has no known flood risk.
- Only one existing Medium Voltage (MV) overhead line needs to be diverted at Site E, compared to larger and/or more complex lines at other sites like Site C.
- Site E has enough space for landscaping, screening, and biodiversity improvements, which would be harder to achieve at Sites C and D.

Important Point to Note: EirGrid will consult with the community and stakeholders on any future proposed circuits and route corridors to the Ward 400kV Substation.



Examples of GIS Substations



Public Information

Visit one of our face-to-face or online public information events, to find out more and speak to the EirGrid team:

Date	Time	Location	Registration
Tuesday 12th May	12-7 pm	St. Kevin's Football Club, The Ward, Dublin, D11 TF72	No registration required
Tuesday 19th May	7-8 pm	Zoom (online)	Scan QR below
Tuesday 26th May	12-7 pm	St. Kevin's Football Club, The Ward, Dublin, D11 TF72	No registration required



Scan Here to Register
for the Zoom Webinar
Tuesday 19th May



What happens next?

Following the Step 4 public information campaign, the project will move into Step 5, which involves the development, compilation and submission of a Strategic Infrastructure Development (SID) planning application to An Coimisiún Pleanála.

The preliminary design for the Ward 400 kV Substation and associated 400 kV loop-in circuits has commenced together with site surveys and investigations.

EirGrid has commenced engagement with key stakeholders (e.g., An Coimisiún Pleanála, Fingal County Council, etc.) as we look to finalise the planning application this process will continue over the next few months.





Further Information

If you have any queries,
please contact:



Gráinne Duffy

Community Liaison Officer
085 887 4798

Grainne.Duffy@eirgrid.com