

Grid 25 – Delivering Infrastructure

Sonya Twohig
Grid Development



Grid25: Critical Infrastructure

The Drivers

- Facilitating Regional Development
- Connecting New Generation
- Enabling competition
- Interconnection

The Programme

- 250+ Grid25 projects
- 44 projects greater than €10m
- 2,000 km of line upratings
- 1,150km of new line
- 14 new HV Stations



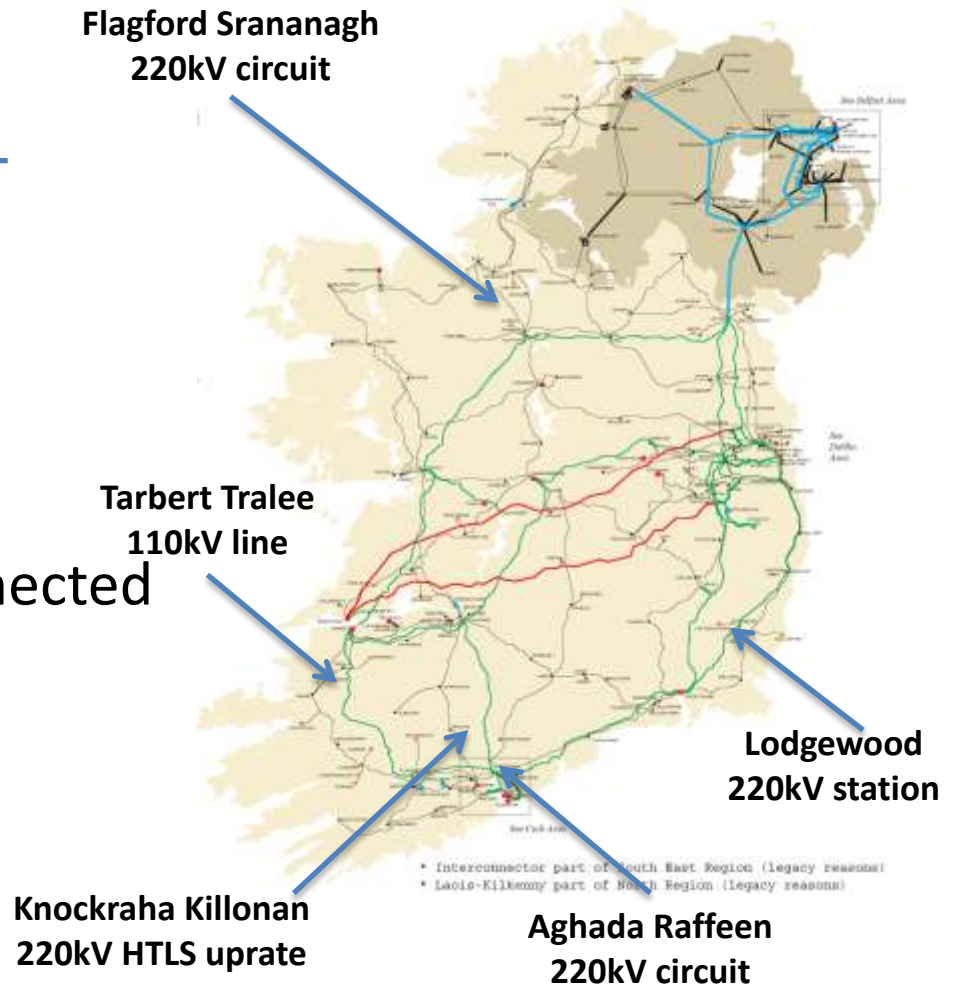
**€3.2bn Investment
3,000 Jobs***



Grid25: Progress to Date

Summary Achievements

- 200+km of new line built
- 700+km line uprated
- 3 new stations built
- 1,469MW new generation connected



* MW registered capacity

2013 Key Achievements

- Investment Decisions

- The North West Project
- Louth 220kV station refurbishment

- Planning Permission Granted

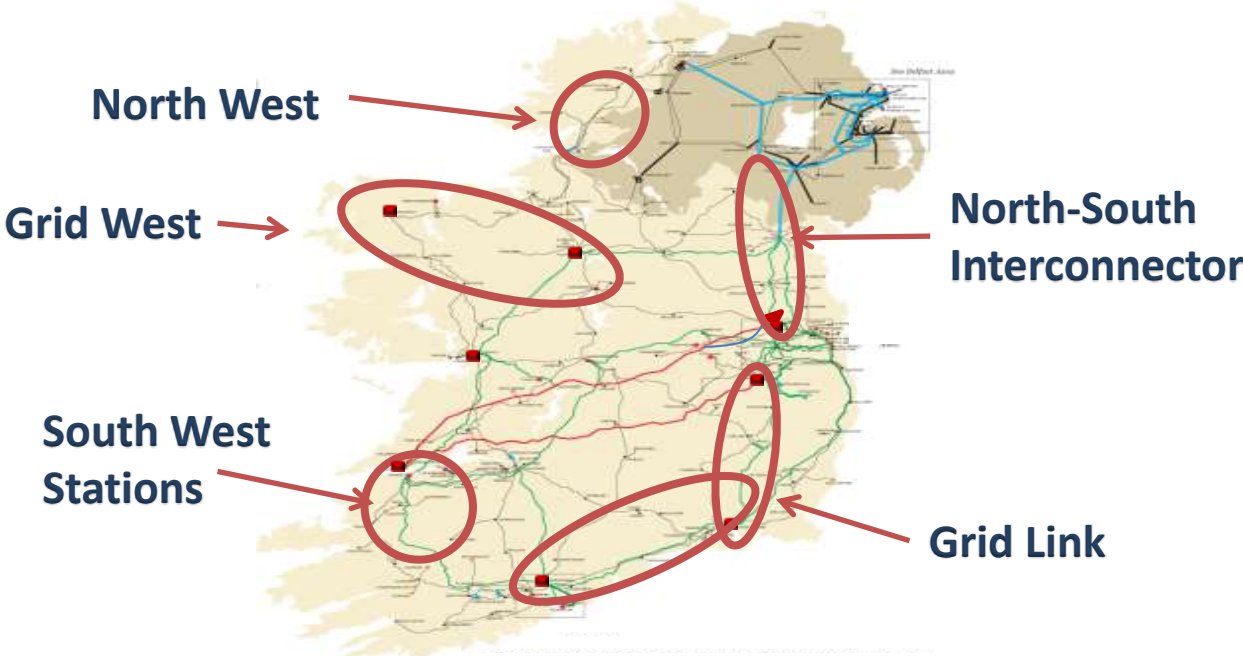
- Kinnegad - Mullingar 110kV circuit in January 2013
- Dublin North Fringe (220kV GIS station at Belcamp) February 2013
- Killonan 220kV GIS station July 2013
- Finglas 220kV Busbar Reconfiguration July 2013
- West Galway 110kV station October 2013

- Energisations

- Cloghran 110kV station in Co. Dublin on 31st March
- Athea 110kV station in Co. Limerick on 9th October
- Great Island 220kV GIS station in Co. Wexford on 25th October



Grid25: Major Backbone Projects



STAGE 1

Information Gathering

North West

Identify environmental & other constraints

Identify feasible options

Grid Link

STAGE 2

Evaluate Options

Grid West

Identification of preferred option (route corridor/site)

Identification of indicative line within corridor or site boundary

STAGE 3

Confirm Design

Consideration of all feedback from Stage 2

Conduct environmental studies and surveys

Confirmation of design of line/site proposal

Ongoing engagement with stakeholders

North South

STAGE 4

Prepare Planning Application

Complete reports and prepare planning application

Preparation of Environmental Impact Statement (EIS) or Environmental Report as required

Conclusion of Pre-application

STAGE 5

Planning Approval Granted

Preparation of construction plans

Serve Wayleave notice to landowners & agree access for construction

Commence

SW Stations

The Grid Link Project – Stage 1

STAGE 1

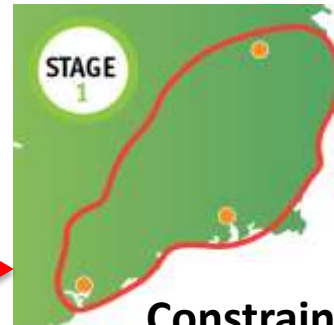
Information Gathering

- Identify Project Study Area
- Identify environmental & other constraints
- Identify feasible options (corridor/sites)
- Publication of Stage 1 Report
- Pre-application consultation with An Bord Pleanála

Public

- Public and stakeholder consultation on study area and constraints
- Public and stakeholder consultation on findings Stage 1 Report

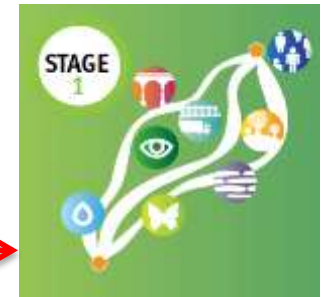
Study Area



Constraints



Corridor Options



Stage 1 Report

- Technical basis for the project
- Work carried out to date
- Technology Alternatives
- Sub-station Zones
- Route Corridor Options
- Evaluation Criteria
- Next Steps

Grid25: Key Challenges

- Public Acceptance
- Community Engagement
- Land Access
- Planning
- Stakeholder Support
- Uncertainty

Issues Include
•Overhead v Underground
•Health
•Environmental impact
•Community Gain\Benefit

Community Engagement Strategy

B LOCAL & COMMUNITY ENGAGEMENT

- Community Engagement Strategy
- Regional and local project offices
- Educational outreach
- Championing Business in the Community

Grid West Project – Community Engagement

- Emerging Preferred Corridor (EPC)

- Announced on the 7th October

- Open Days and Briefings

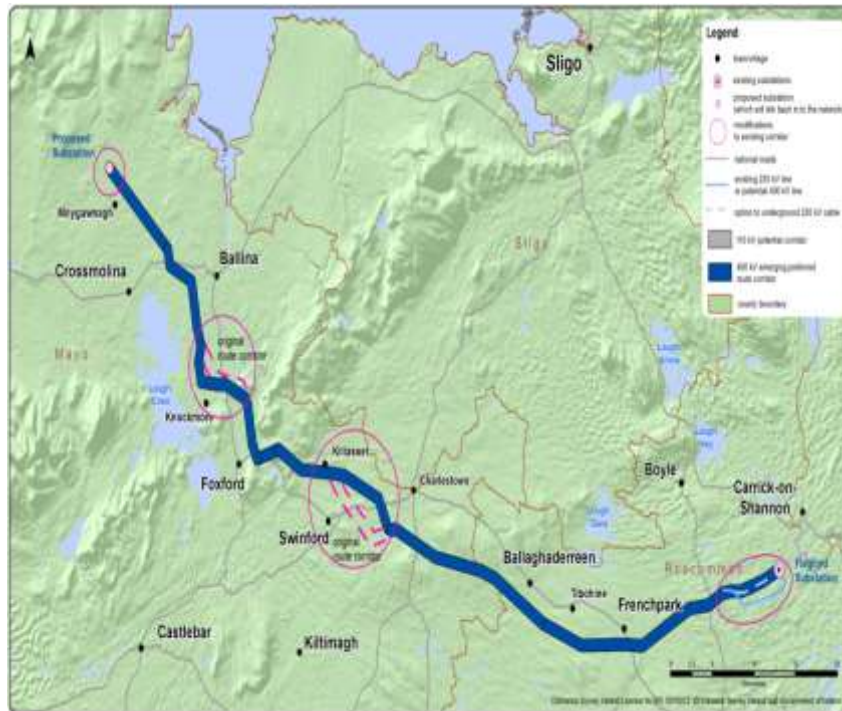
- TD and Councillor briefings held
- 5 public open days in October

- Landowner Engagement

- Meetings being arranged during November

- Project Information Office

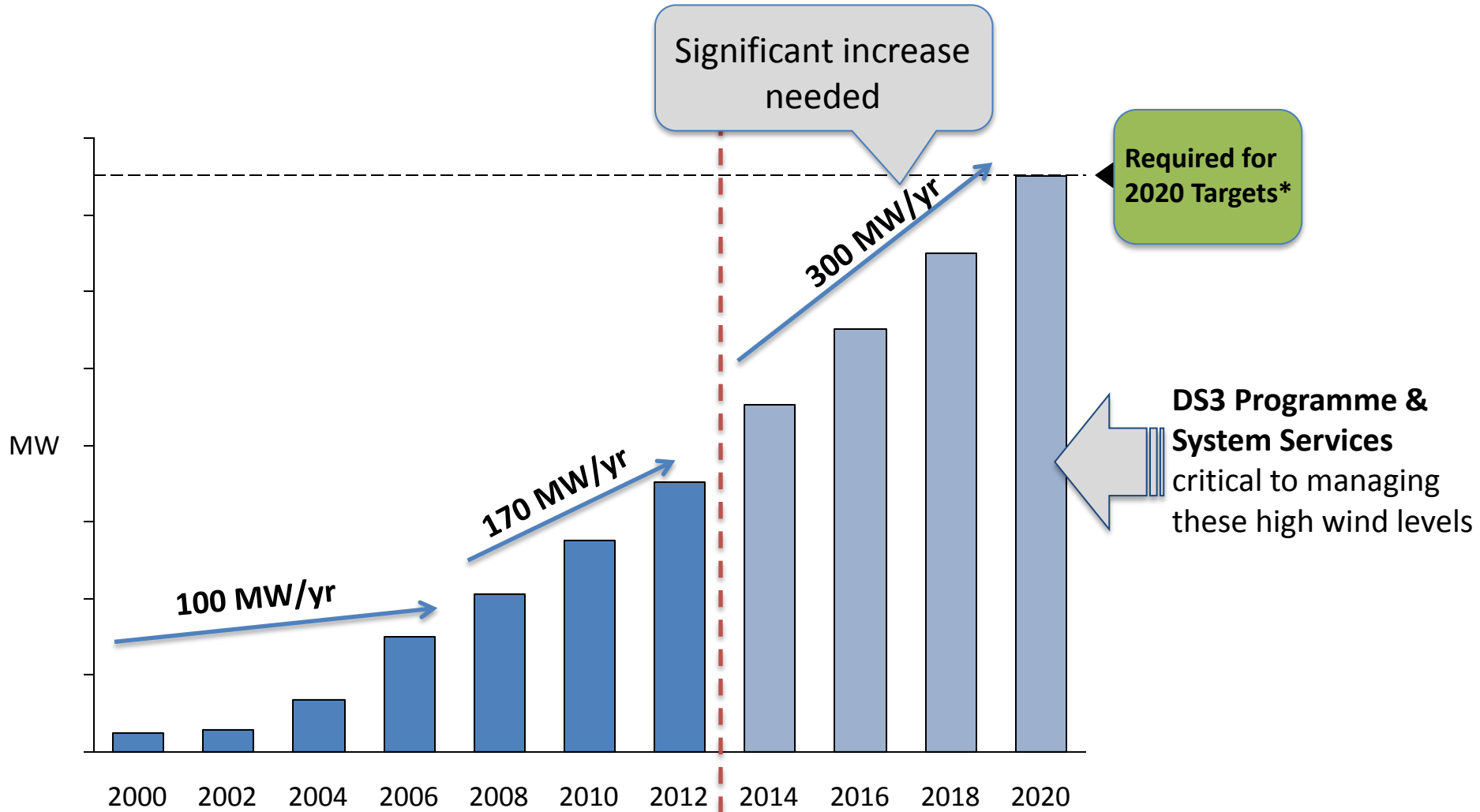
- EirGrid staff now based in Castlebar: a senior project engineer and a Community Liaison officer



Grid 25 Milestones for 2013

Project Milestones	2013 Targets	<i>Expected</i> December 2013
Planning Lodgements	6	6
Energisations	33	28

...However the rate of delivery needs to increase



* Approx 3,500 – 4,000MW of wind required to enable meeting 40% 2020 Target

