

Modified Access Routes April 2016

Tower 109 – LCT 13 & LCT 14

Figure 1



Table 1

Environmental Review Topic	Tower 109 Access Route Comment
Ecology	The access route delineated in purple crosses improved pasture and a single moderate value hedgerow to the west of tower location. This route will require the temporary clearance of a short section of moderate hedgerow. There is no change to the overall ecological impact evaluation as the impact remains imperceptible.
Cultural Heritage	There are no additional CH considerations for this location.
Traffic	Access to Tower 109 is still accessed via the L75031. No change to traffic movements.
Water/Soils/Geology	No significant issues with either access route option.
Agronomy	The access route delineated in purple will increase the length of access route crossing LCT-011, 012 & 013 and decrease the length of access route crossing LCT-014. There will be no change in impact on either land parcel LCT-011, 012 & 013 or LCT-014.

Tower 126 – LCT 056 & 056A

Figure 2

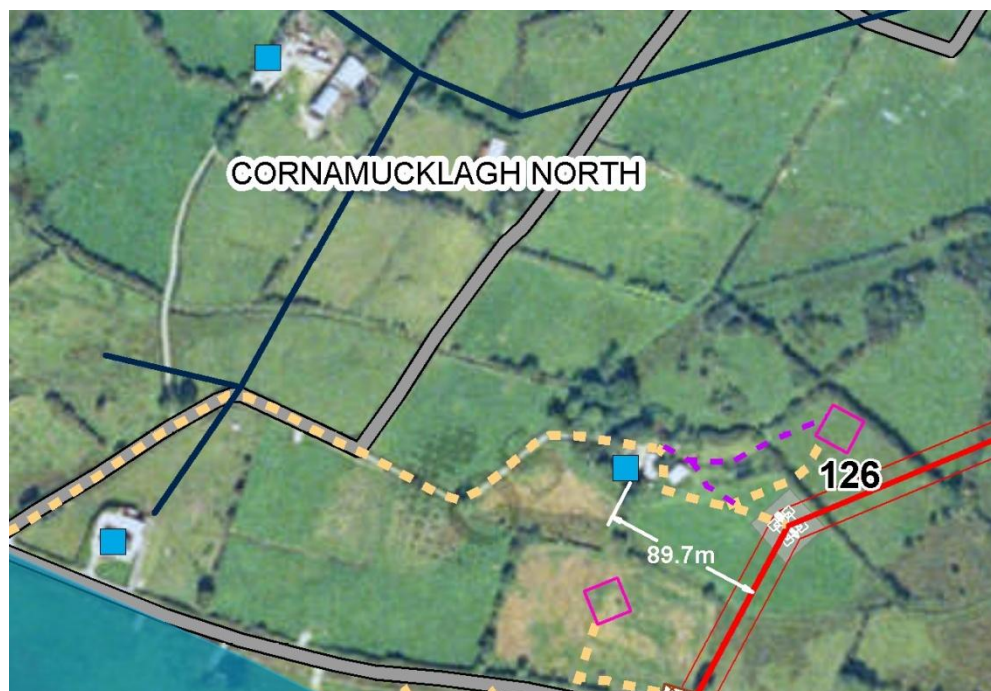


Table 2

Environmental Review Topic	Tower 126 Access Route Comment
Ecology	The access route delineated in purple avoids the requirement to remove a mature tree and also a hedgerow crossing at a reported badger sett. The route crosses improved agricultural land using an existing track and field entrance to the stringing location. There is no change to the overall ecological impact evaluation; the impact is evaluated as imperceptible in the local context.
Cultural Heritage	There are no additional cultural heritage issues regarding the alternative temporary access to Tower 126.
Traffic	Access to Tower 126 is still accessed via the L34201. No change to traffic movements.
Water/Soils/Geology	No significant issues with either access route option.
Agronomy	There is no significant difference between the access route delineated in purple and the access route as submitted in the application and there will be no change in the impact evaluation.

Tower 249 – LMC 155

Figure 3

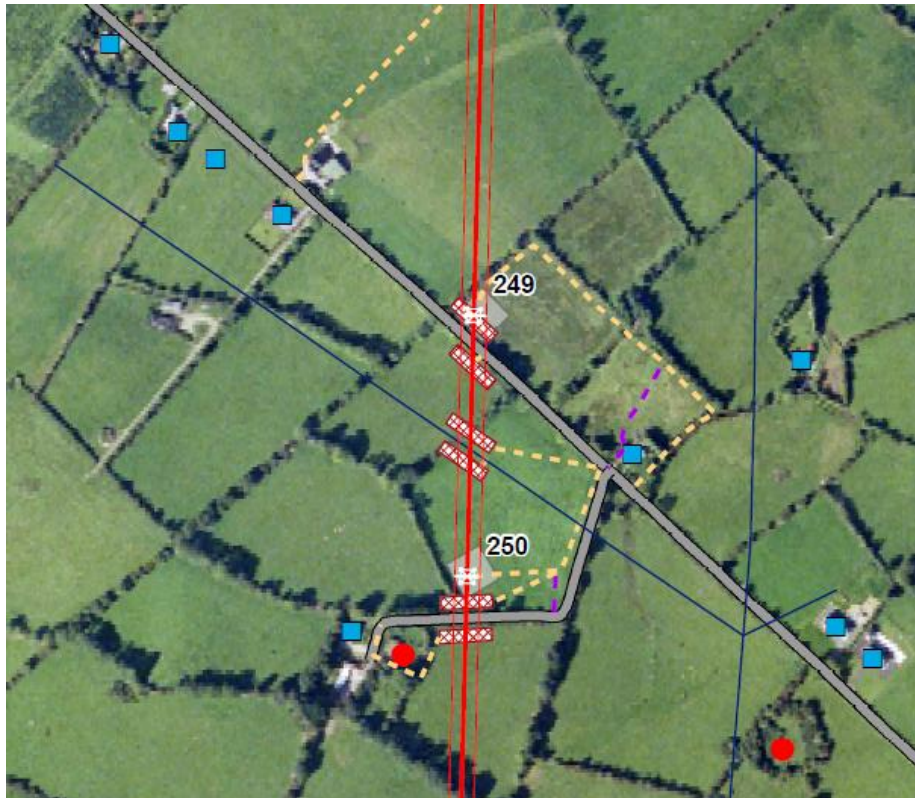


Table 3

Environmental Review Topic	Tower 249 Access Route Comment
Ecology	The access route delineated in purple uses an existing field entrance via a gate off the main road and crosses improved pasture to the tower location. There is no change to the overall ecological impact evaluation.
Cultural Heritage	There are no additional CH considerations for this location.
Traffic	Access to Tower 249 is still accessed via the L68011. No change to traffic movements.
Water/Soils/Geology	No significant issues with either access route option.
Agronomy	The access route delineated in purple utilises an existing entrance to the field and it crosses the field rather than using an existing laneway. The access route delineated in purple will not change the impact evaluation.

Tower 277 – LMC 128

Figure 4

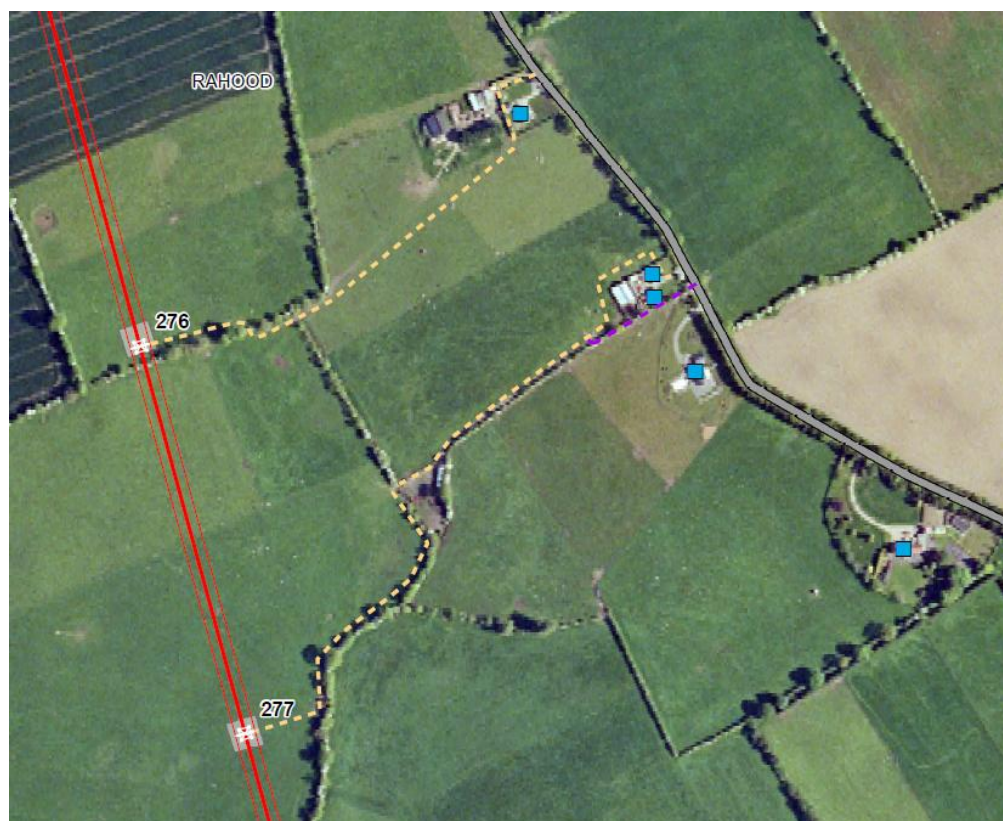


Table 4

Environmental Review Topic	Tower 277 Access Route Comment
Ecology	The access route delineated in purple uses an existing laneway entrance off the main road. It crosses improved pasture and an existing hedgerow gap to the tower location. There is no change to the overall ecological impact evaluation.
Cultural Heritage	The route delineated in purple is a minor adjustment to the original access route. As with the original, the route follows a townland boundary wall towards the tower location. There are no CH considerations for this location.
Traffic	Access to Tower 277 is still accessed via the L34021. No change to traffic movements.
Water/Soils/Geology	No significant issues with either access route option.
Agronomy	There is no significant difference with the access route delineated in purple. The access route delineated in purple will not change the impact evaluation.

Tower 289 – LMC 216

Figure 5



Table 5

Environmental Review Topic	Tower 289 Access Route Comment
Ecology	The access route delineated in purple uses an existing laneway entrance off the main road and follows the internal access roads within the estate. There is no change to the overall ecological impact evaluation.
Cultural Heritage	There are no additional cultural heritage considerations.
Traffic	The alternative access to Tower 289 is accessed via the same local road L3406. No change to traffic movements.
Water/Soils/Geology	No significant issues with either access route option.
Agronomy	There is no significant difference with the access route delineated in purple. The access route delineated in purple will not change the impact evaluation.

Tower 349 – LMC 050

Figure 6

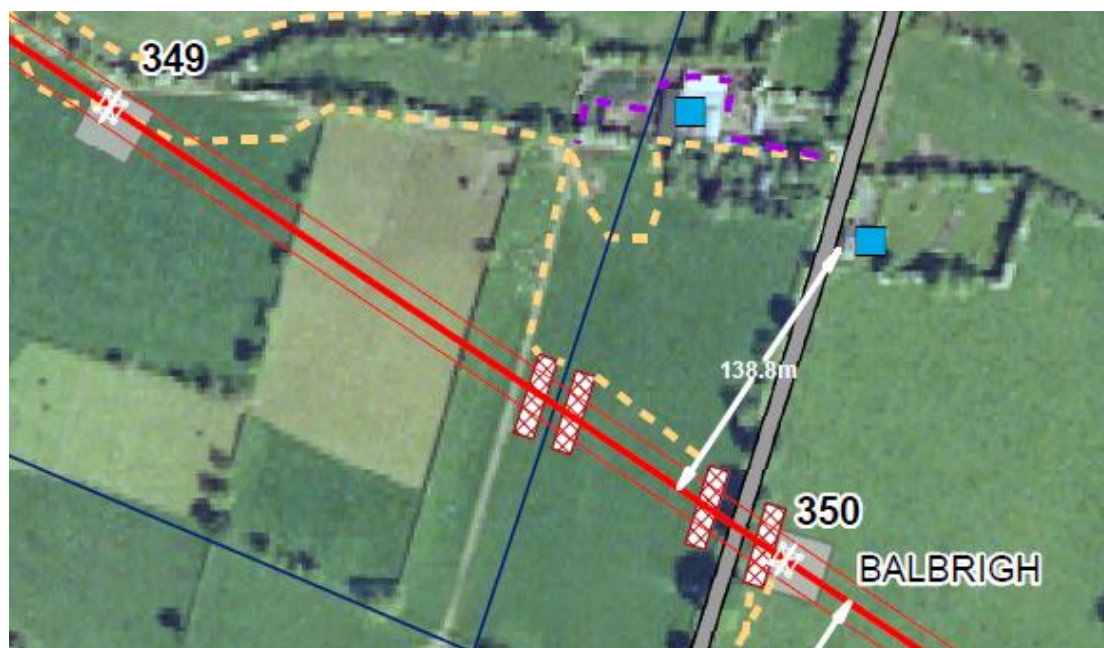


Table 6

Environmental Review Topic	Tower 349 Access Route Comment
Ecology	The access route delineated in purple uses an existing laneway entrance off the main road. It follows an existing farm access route and access track to improved agricultural grassland to the tower location. There is no change to the overall ecological impact evaluation.
Cultural Heritage	There are a number of farm buildings depicted on the 1 st Edition Map in the vicinity of both the modification and the existing route. Any extant vernacular features should be demarcated and avoided.
Traffic	Access to Tower 349 is still accessed via the L40071. No change to traffic movements.
Water/Soils/Geology	No significant issues with either access route option.
Agronomy	There is no significant difference with the access route delineated in purple. The access route delineated in purple will not change the impact evaluation.

Tower 400 – LMC 016

Figure 7



Table 7

Environmental Review Topic	Tower 400 Access Route Comment
Ecology	The access route delineated in purple uses an existing gated entrance. It crosses improved pasture and an existing hedgerow gap to the tower location. There is no change to the overall ecological impact evaluation.
Cultural Heritage	There are no CH considerations for this location.
Traffic	Access to Tower 400 is still accessed via the R125. No change to traffic movements.
Water/Soils/Geology	No significant issues with either access route option.
Agronomy	There is no significant difference with the access route delineated in purple. The access route delineated in purple will not change the impact evaluation.

Tower 170 LCT 135

Figure 8



Table 8

Environmental Review Topic	Tower 170 Access Route Comment
Ecology	The access route delineated in purple follows an existing laneway parallel to the main road. There is no change to the overall ecological impact evaluation.
Cultural Heritage	There are no additional CH considerations for this location.
Traffic	Access to Tower 170 is still accessed via the R181. No change to traffic movements.
Water/Soils/Geology	No significant issues with either access route option.
Agronomy	The access route delineated in purple utilises an existing entrance to the field and requires a slightly longer route length. The access route delineated in purple will not change the impact evaluation.

Guarding South of Road Span 150 - 151– LCT 091

Figure 9

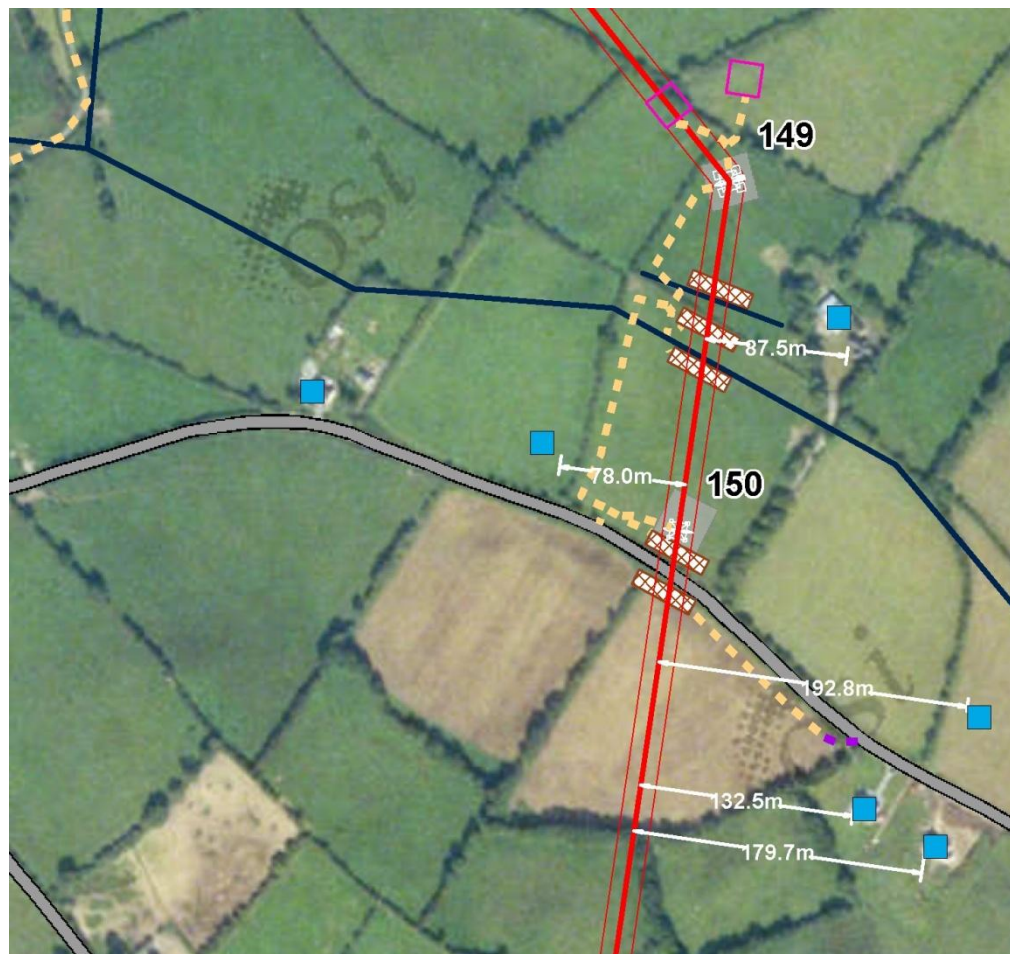


Table 9

Environmental Review Topic	Guarding South of Road Span 150 – 151 Access Route Comment
Ecology	The access route delineated in purple crosses improved pasture and utilises an existing entrance to the road. There is no change to the overall ecological impact evaluation, as the impact remains imperceptible.
Cultural Heritage	There are no additional CH considerations for this location.
Traffic	Access to guarding between Towers 150 and 151 south of the L7211 is still accessed via the L7211 No change to traffic movements.
Water/Soils/Geology	No significant issues with either access route option.
Agronomy	The access route delineated in purple utilises an existing entrance to the field and requires a slightly longer route length. The access route delineated in purple will not change the impact evaluation.

Tower 175 – LCT 141

Figure 10



Table 10

Environmental Review Topic	Tower 175 Access Route Comment
Ecology	The access route delineated in purple uses an existing farm entrance from the main road. The route delineated in purple avoids direct disturbance to a stone wall at the roadside. There is no change to the overall ecological impact evaluation.
Cultural Heritage	Access to tower 175 passes through the yards of a farmstead depicted on the 1st edition OS Map. There is no change to the overall cultural heritage evaluation.
Traffic	Access to Tower 175 is still accessed via the L4010. No change to traffic movements.
Water/Soils/Geology	No significant issues with either access route option.
Agronomy	The access route delineated in purple utilises an existing entrance to a farm yard – the impact on which is already assessed. The access route delineated in purple will not change the impact evaluation.

Guarding North of Road Span 185-186 – LCT 153

Figure 11

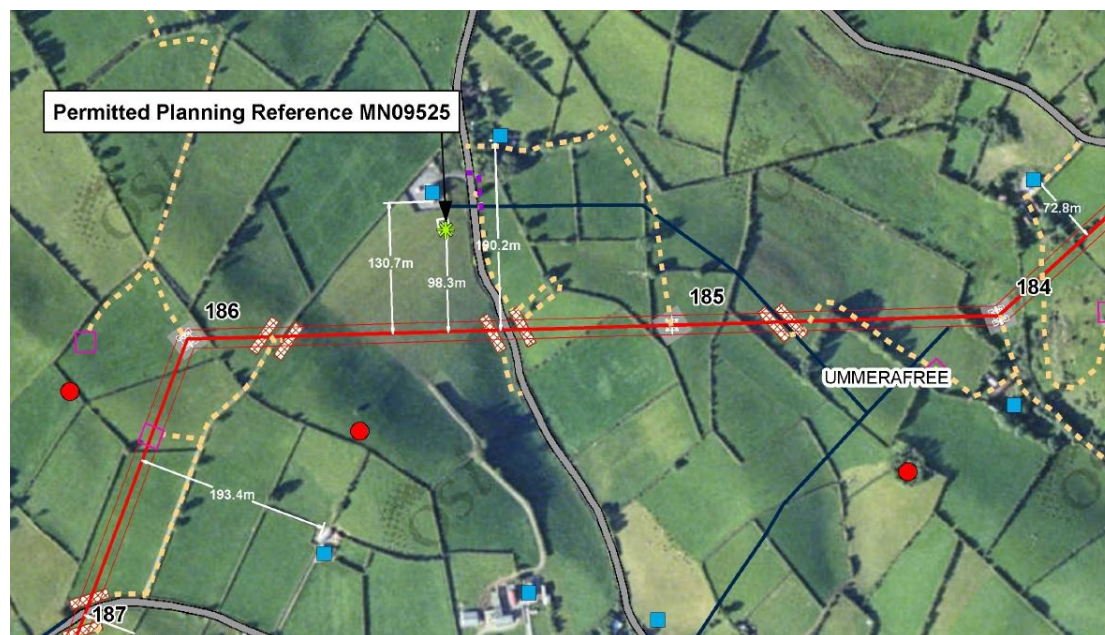


Table 11

Environmental Review Topic	Span 185-186 Access Route Comment
Ecology	The access route delineated in purple uses an existing field entrance from the main road. The route delineated in purple avoids direct disturbance to a low value hedgerow at the roadside. There is no change to the overall ecological impact evaluation.
Cultural Heritage	There are no additional CH considerations for this location.
Traffic	Access to guarding on east side of L40121 is still accessed via the L40121. No change to traffic movements.
Water/Soils/Geology	No significant issues with either access route option.
Agronomy	The access route delineated in purple utilises an existing entrance to the field and requires a slightly longer route length – staying close to the same field boundary. The access route delineated in purple will not change the impact evaluation.

Guarding North of Road Span 213-214 – LCT 206

Figure 12



Table 12

Environmental Review Topic	Guarding North of Span 213-214 Access Route Comment
Ecology	The access route delineated in purple uses an existing field entrance along the main road. This route avoids direct disturbance to a Sycamore and Ash treeline at the roadside with only minor trimming required. There is no change to the overall ecological impact evaluation.
Cultural Heritage	There are no additional CH considerations for this location.
Traffic	Access to guarding on east side of L7555 is still accessed via the L7555. No change to traffic movements.
Water/Soils/Geology	No significant issues with either access route option.
Agronomy	The access route delineated in purple utilises an existing entrance to the field and requires a slightly shorter route length. The access route delineated in purple will not change the impact evaluation.

Tower 250 and Guarding – LMC 154

Figure 13

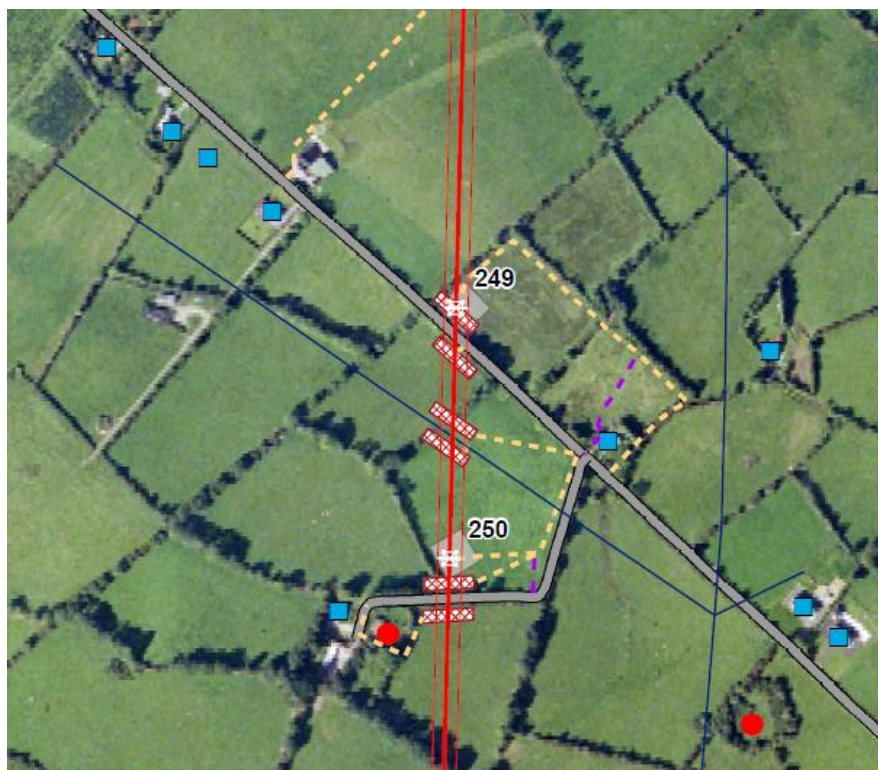


Table 13

Environmental Review Topic	Tower 250 and Guarding Access Route Comment
Ecology	The access route delineated in purple uses an existing field entrance off the public road and crosses improved agricultural grassland to the tower location, avoiding disturbance to low value hedgerow at the roadside. There is no change to the overall ecological impact evaluation.
Cultural Heritage	The access route delineated in purple is a minor adjustment to the access route originally shown in an area where there are no previously recorded archaeological or architectural heritage features at the location of the access route. There are no cultural heritage issues with the access route delineated in purple.
Traffic	Access to Tower 250 and guarding is still accessed via the L68016. No change to traffic movements.
Water/Soils/Geology	No significant issues with either access route option.
Agronomy	There is no significant difference with the access route delineated in purple. The access route delineated in purple will not change the impact evaluation.

Tower 254 & Guarding – LMC 149 & 150

Figure 14



Table 14

Environmental Review Topic	Tower 254 Access Route Comment
Ecology	The access route delineated in purple uses an existing field entrance from the public road and crosses improved pasture to the tower location. This route also uses an existing gap in hedgerow between two fields and avoids direct disturbance to a hedgerow at the roadside. There is no change to the overall ecological impact evaluation.
Cultural Heritage	The access route delineated in purple is a minor adjustment to the original route. The adjacent cross roads was used for local dances. There are no additional CH considerations for this location as a result of the access route delineated in purple.
Traffic	Access to Tower 254 and guarding is still accessed via the L28021. No change to traffic movements.
Water/Soils/Geology	No significant issues with either access route option.
Agronomy	There is no significant difference with the access route delineated in purple. The access route delineated in purple will not change the impact evaluation.

Tower 261 – LMC 139

Figure 15



Table 15

Environmental Review Topic	Tower 261 Access Route Comment
Ecology	The access route delineated in purple uses an existing gap in the hedgerow. This route avoids direct disturbance to a low value hedgerow at the roadside. There is no change to the overall ecological impact evaluation.
Cultural Heritage	The route delineated in purple is a minor adjustment to the access route. There are no cultural heritage issues with the access route delineated in purple.
Traffic	Access to Tower 261 and guarding is still accessed via the L68371. No change to traffic movements.
Water/Soils/Geology	No significant issues with either access route option.
Agronomy	The access route delineated in purple will be slightly longer than the original access route, however there will be no change in the impact evaluation.

Tower 305 – LMC 101

Figure 16



Table 16

Environmental Review Topic	Tower 305 Access Route Comment
Ecology	The access route delineated in purple uses an existing field entrance from the main road. The route delineated in purple avoids direct disturbance to a low value hedgerow at the roadside. There is no change to the overall ecological impact evaluation.
Cultural Heritage	The route delineated in purple enters into a field from the local road that leads into the old Gibbstown Estate. The entrance is an existing farm access. There are no cultural heritage issues with the access route shown in purple.
Traffic	Access to Tower 305 is still accessed via the L3409. No change to traffic movements.
Water/Soils/Geology	No significant issues with either access route option.
Agronomy	There is no significant difference with the access route delineated in purple. The access route delineated in purple will not change the impact evaluation.

Tower 308 – LMC 099

Figure 17

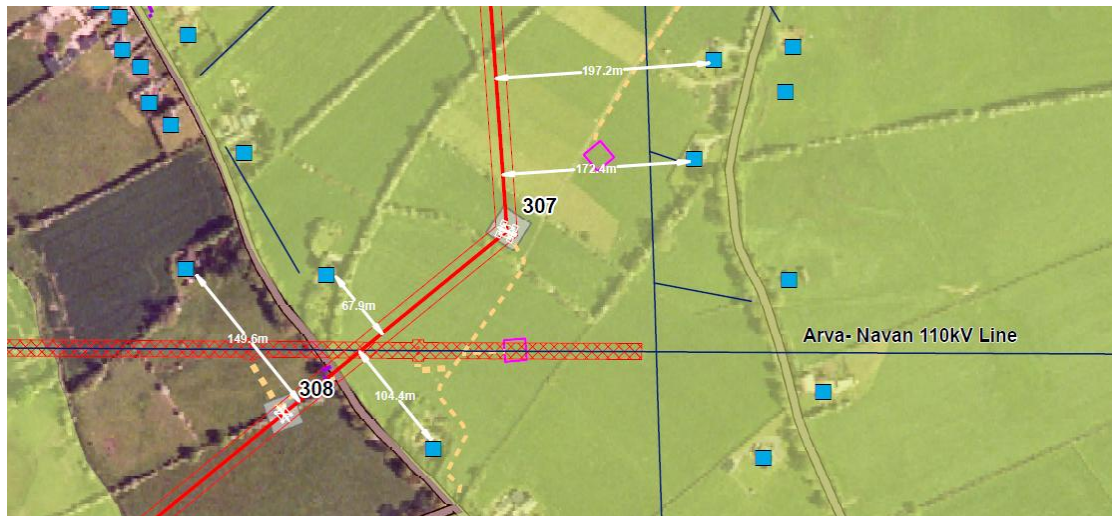


Table 17

Environmental Review Topic	Tower 308 Access Route Comment
Ecology	The access route delineated in purple uses an existing entrance off the main road. It crosses improved pasture to the tower location. There is no change to the overall ecological impact evaluation.
Cultural Heritage	There are no CH considerations for this location.
Traffic	Access to Tower 308 is still accessed via the L3409. No change to traffic movements.
Water/Soils/Geology	No significant issues with either access route option.
Agronomy	There is no significant difference with the access route delineated in purple. The access route delineated in purple will not change the impact evaluation.

Tower 351 and 352 – LMC 049

Figure 18



Table 18

Environmental Review Topic	Tower 351 and 352 Access Route Comment
Ecology	The access route delineated in purple connects to an existing entrance laneway off the public road. There is no change to the overall ecological impact evaluation.
Cultural Heritage	The route shown in purple is a minor adjustment to the original access route. Access to towers 351 & 352 are via the entrance to Balbray stud, or Balbrigh House as it appears on the 2nd ed. Map. The entrance is formally arranged, recessed and consists of a wrought iron ornamental gate with capped gate piers, adjoining a capped rubble stone wall. Care should be taken to avoid any impacts.
Traffic	Access to Towers 351 and 352 is still accessed via the L40071. No change to traffic movements.
Water/Soils/Geology	No significant issues with either access route option.
Agronomy	There is no significant difference with the access route delineated in purple. The access route delineated in purple will not change the impact evaluation.