

Module 1.8 Construction

(To include temporary access routes)

Modified Access Routes

Tower 127 – LCT57

Figure 1



Table 1

Environmental Review Topic	Tower 127 Access Route Comment
Ecology	The access route delineated in purple uses an existing field entrance along the main road and crosses improved pasture to the tower location. The access route delineated in purple avoids direct disturbance of low value hedgerow at the roadside. There is no change to the overall ecological impact evaluation.
Cultural Heritage	The original route, delineated in yellow, passed within the vicinity of a lime kiln which appears on the 1st edition OS map, but is no longer extant by the time of the 2nd edition survey. The access route delineated in purple avoids this area entirely. There are no cultural heritage issues with the access route delineated in purple.
Traffic	Access to Tower 127 is still accessed via the L3420. No change to traffic movements.
Water/Soils/Geology	No significant issues with either access route option.
Agronomy	The access route delineated in purple utilises an existing entrance to the field, requires a shorter length, and remains close to the field boundary. The access route delineated in purple will not change the impact evaluation.

Tower 142 – LCT 79B

Figure 2



Table 2

Environmental Review Topic	Tower 142 Access Route Comment
Ecology	The access route delineated in purple uses an existing field entrance along the main road and existing gaps in hedgerows to the north of tower location. This route avoids direct disturbance to low value hedgerow at the roadside. There is no change to the overall ecological impact evaluation.
Cultural Heritage	The access route delineated in purple is a minor adjustment to the access route originally shown in an area where there are no previously recorded archaeological or architectural heritage features. There are no cultural heritage issues with the access route delineated in purple.
Traffic	Access to Tower 142 is still accessed via the R183. No change to traffic movements
Water/Soils/Geology	No significant issues with either access route option.
Agronomy	The route delineated in purple will follow the boundary of an adjoining field for approximately 50m. The access route delineated in purple will not change the impact evaluation.

Tower 153 – LCT95

Figure 3



Table 3

Environmental Review Topic	Tower 153 Access Route Comment
Ecology	The access route delineated in purple uses an existing field entrance from the main road. The route delineated in purple avoids direct disturbance to a low value hedgerow at the roadside. There is no change to the overall ecological impact evaluation.
Cultural Heritage	The route delineated in purple enters into a field from the local road in the vicinity of a farmstead that appeared on the 1st Edition OS map but was no longer extant by the time of the 2nd Edition survey. The entrance is an existing farm access. There are no cultural heritage issues with the access route shown in purple.
Traffic	Access to Tower 153 is still accessed via the L3201. No change to traffic movements.
Water/Soils/Geology	No significant issues with either access route option.
Agronomy	The route delineated in purple will cross the affected field for an additional 50m (approximately), entering the field adjacent to a holding pen, thus potentially increasing the disturbance impact. The access route delineated in purple will not change the impact evaluation.

Guarding 206-207 – LCT196A

Figure 4



Table 4

Environmental Review Topic	Guarding 206-207 Access Route Comment
Ecology	The access route delineated in purple is within the margin of Corlea Bog. An existing field entrance from the main road is used, rather than crossing a low hedgerow. The route delineated in purple avoids direct disturbance to a hedgerow at the roadside. There is no change to the overall ecological impact evaluation.
Cultural Heritage	The route shown in purple is a minor adjustment to the original access route, in an area where there are no previously recorded archaeological or architectural heritage features. There are no cultural heritage issues with the access route delineated in purple.
Traffic	Access to guarding is via the same local road (L4903). No change to traffic movements
Water/Soils/Geology	No significant issues with either access route option.
Agronomy	The access route delineated in purple uses the farmyard entrance and will be slightly longer. While it is preferable to avoid the farmyard, it is not practical to do so, because there is no alternative field access at this point. The route delineated in purple will increase disturbance but does not increase the overall impact on the land parcel.

Tower 210 – LCT 202

Figure 5



Table 5

Environmental Review Topic	Tower 210 Access Route Comment
Ecology	The access route delineated in purple uses an existing field entrance along the main road, and this route avoids direct disturbance to a low value hedgerow at the roadside. There is no change to the overall ecological impact evaluation.
Cultural Heritage	The route delineated in purple is a minor adjustment to the access route in an area where there are no previously recorded archaeological or architectural heritage features. There are no cultural heritage issues with the access route delineated in purple.
Traffic	Access to Tower 210 is still accessed via the L49032. No change to traffic movements.
Water/Soils/Geology	No significant issues with either access route option.
Agronomy	The access route delineated in purple is approximately the same length as the original and therefore will not change the impact evaluation.

Tower 221 – LCT 217

Figure 6



Table 6

Environmental Review Topic	Tower 221 Access Route Comment
Ecology	The access route delineated in purple uses an existing field entrance along the main road, crosses improved pasture to the tower location and avoids direct disturbance to a low value hedgerow at the roadside. There is no change to the overall ecological impact evaluation.
Cultural Heritage	The route delineated in purple is a minor adjustment to the original access route, in an area where there are no previously recorded archaeological or architectural heritage features. There are no cultural heritage issues with the access route delineated in purple.
Traffic	Access to Tower 221 is accessed via the same local road (L3525). No change to traffic movements.
Water/Soils/Geology	No significant issues with either access route option.
Agronomy	The access route delineated in purple crosses the fields in a similar manner to the original access route, and because it is shorter, is preferred. There is no change in impact to this land parcel.

Tower 227 – LCT 229

Figure 7



Table 7

Environmental Review Topic	Tower 227 Access Route Comment
Ecology	The access route delineated in purple uses an existing field entrance along the main road, crosses improved pasture to the tower location and avoids direct disturbance to an ash treeline at the roadside. There is no change to the overall ecological impact evaluation.
Cultural Heritage	The route delineated in purple enters into a field from the local road in the vicinity of a farmhouse that appeared on the 1st Edition OS map, but was no longer extant by the time of the 2nd Edition survey. The entrance is an existing farm access. There are no cultural heritage issues with the access route delineated in purple.
Traffic	Access to Tower 227 is accessed via the same local road (L7568). No change to traffic movements.
Water/Soils/Geology	No significant issues with either access route option.
Agronomy	The access route delineated in purple enters the field through a holding pen increasing the potential for disturbance, crosses the affected field and is approximately 25m longer than the original access route. There is no significant increase in impact due to the access route delineated in purple.

Tower 230 – LCT 235

Figure 8



Table 8

Environmental Review Topic	Tower 230 Access Route Comment
Ecology	The access route delineated in purple uses an existing field entrance along the main road and crosses improved pasture to the tower location. This route also uses an existing gap in hedgerow between two fields and avoids direct disturbance to a hedgerow at the roadside. There is no change to the overall ecological impact evaluation.
Cultural Heritage	The access route delineated in purple is a minor adjustment to the original route, in an area where there are no previously recorded archaeological or architectural heritage features. There are no cultural heritage issues with the access route delineated in purple.
Traffic	Access to Tower 230 is accessed via the same local road (L35352). No change to traffic movements.
Water/Soils/Geology	No significant issues with either access route option.
Agronomy	The access route delineated in purple uses additional existing farm track and crosses over green field for a short distance before joining the original route. Although there may be some additional disturbance, there is no significant difference in impact predicted.

Tower 242 Stringing – LMC_171

Figure 9

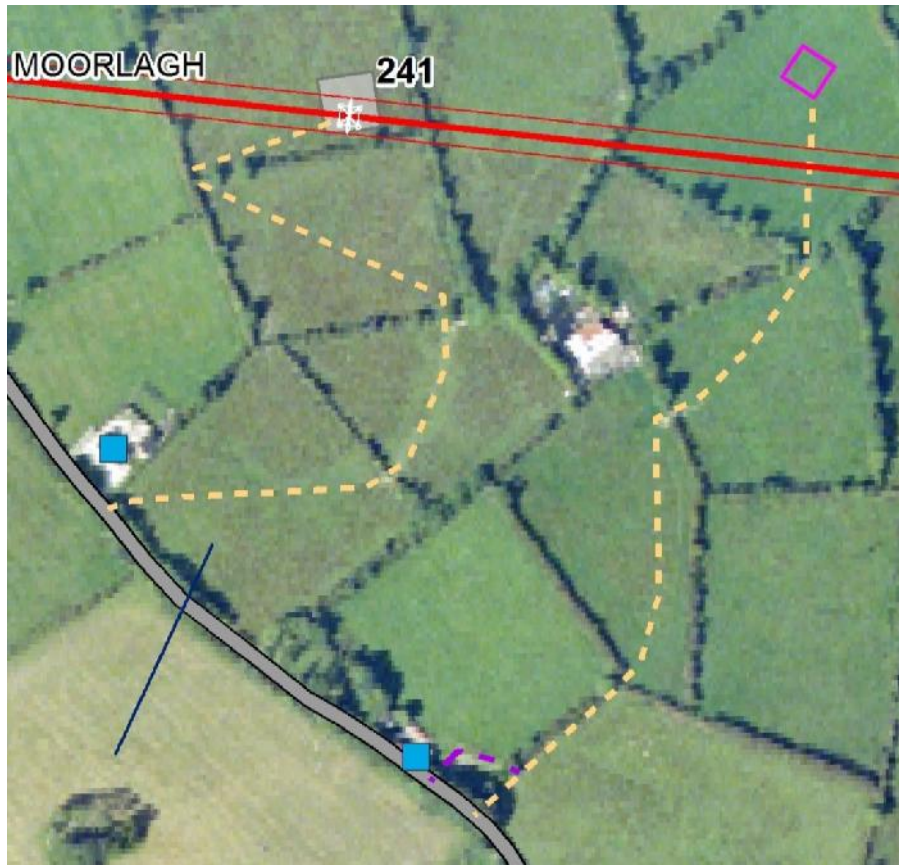


Table 9

Environmental Review Topic	Tower 242 Stringing Access Route Comment
Ecology	The route delineated in purple utilises an existing road access, in addition to an existing access within the field boundary. There is no change to the overall ecological impact evaluation.
Cultural Heritage	There are no cultural heritage issues with the proposed alternative route.
Traffic	Both access routes are via the same local road; with the alternative utilising an existing entrance. There is no change to traffic movements.
Water/Soils/Geology	Soil and subsoil types are similar for both routes, as is the water environment; therefore there are no significant impacts identified.
Agronomy	The route delineated in purple could potentially increase disturbance as it passes through a farm entrance; however, this will not change the overall impact on this land parcel.

Guarding between Towers 251/252 – LMC_153

Figure 10

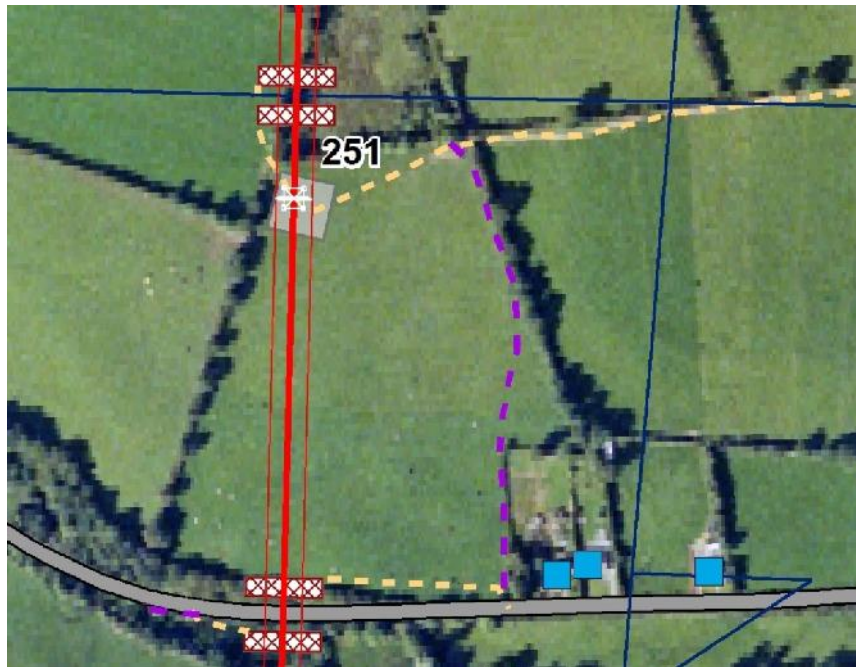


Table 10

Environmental Review Topic	Tower 251/252 Access Route Comment
Ecology	The access route to the northern guarding, delineated in purple, uses an existing gap in the hedgerow in the northeast corner of the field, crossing improved agricultural grassland. The access to the southern guarding, also delineated in purple, will use an existing gap in the hedgerow, which is currently fenced with wire fencing. There is no change to the overall ecological impact evaluation.
Cultural Heritage	There are no cultural heritage issues identified with either of these modifications.
Traffic	Access to guarding on north side of L6801 now via access route to Tower 251. No change to daily maximum peak traffic envisaged along haul routes.
Water/Soils/Geology	Both routes are across similar soil and subsoil types, the water environment is also similar. No significant issues with either access route option.
Agronomy	The access route to the northern guarding, delineated in purple, stays close to the field boundary and uses an existing farm track. The additional effects arising from either of the modified routes are not significant and would not change the overall impact evaluation.

Tower 258 – LMC_144

Figure 11



Table 11

Environmental Review Topic	Tower 258 Access Route Comment
Ecology	The route delineated in purple utilises an existing gate to access improved grassland at the tower site. There is no change to the overall ecological impact evaluation.
Cultural Heritage	There are no cultural heritage issues with the access route delineated in purple.
Traffic	Access to Tower 258 is still via the L6837; no change to traffic movements.
Water/Soils/Geology	Soil and subsoil types are similar for both routes, as is the water environment; therefore there are no significant impacts identified.
Agronomy	The route delineated in purple is located in the same land parcel and is slightly shorter. This modification will not change the overall impact on this land parcel.

Tower 322, guarding and stringing – LMC-077

Figure 12

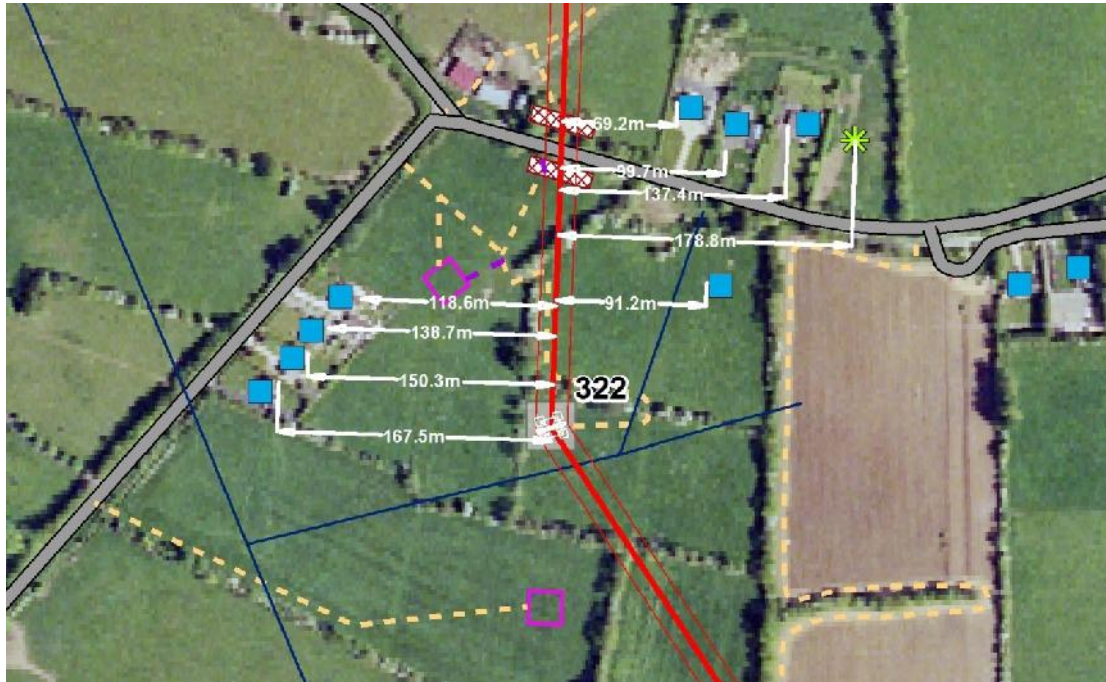


Table 12

Environmental Review Topic	Tower 322 guarding and stringing Access Route Comment
Ecology	The access route delineated in purple uses an existing gap in the hedgerow in the north of the field, crossing improved agricultural grassland to the tower. The route shown in purple does not require a change to the overall ecological impact evaluation.
Cultural Heritage	Archaeological monitoring at the guarding adjacent to the proposed access has been specified in the EIS. There are no cultural heritage issues with the access route delineated in purple.
Traffic	Access to guarding and Tower 322 is via existing field gate on south side of L400453. No change to daily maximum peak traffic is envisaged along haul routes.
Water/Soils/Geology	Soil and subsoil types are similar for both routes, as is the water environment; therefore there are no significant impacts identified.
Agronomy	The route delineated in purple reduces the length of access route required within the land parcel. The reduced length will not change the overall impact on this land parcel.

Tower 338 & guarding – LMC_048 & LMC_060

Figure 13



Table 13

Environmental Review Topic	Tower 338 Access Route Comment
Ecology	The access route shown in purple uses an existing entrance from the local road. Within the context of improved agricultural lands there is no appreciable effect on the significance of the ecological impact evaluation at this location.
Cultural Heritage	There are no cultural heritage issues with the access route delineated in purple.
Traffic	Access to Tower 338 is via the local road (L4024). There is no change to traffic movements.
Water/Soils/Geology	Soil and subsoil types are similar for both access routes, as is the water environment; therefore there are no significant impacts identified.
Agronomy	The additional length of access route delineated in purple will result in additional disturbance to land. However, the overall significance of impact will not change.

Tower 347/348 – LMC_051

Figure 14



Table 14

Environmental Review Topic	Tower 347/348 Access Route Comment
Ecology	The route delineated in purple is shorter, uses an existing entrance; with no change to the overall ecological impact evaluation.
Cultural Heritage	The modified access passes adjacent to a building that is indicated on the 1st Ed OS map circa 1830. It is recommended that a suitably qualified archaeologist conduct a confirmatory survey of the access route. A description of the proposed mitigation for confirmation surveys is contained within the EIS. Following mitigation there will be no impact to the remaining historic fabric.
Traffic	Access to Towers 347 and 348 is via the same local road (L40071). There is no change to traffic movements.
Water/Soils/Geology	Soil and subsoil types are similar for both access routes, as is the water environment; therefore there are no significant impacts identified.
Agronomy	The access route delineated in purple will reduce the area of disturbance to land. The use of access through a farmyard could potentially increase disturbance. However, the overall impact on the affected land parcel will not change as a result of using the amended access route.

Tower 358 and guarding – LMC-044

Figure 15

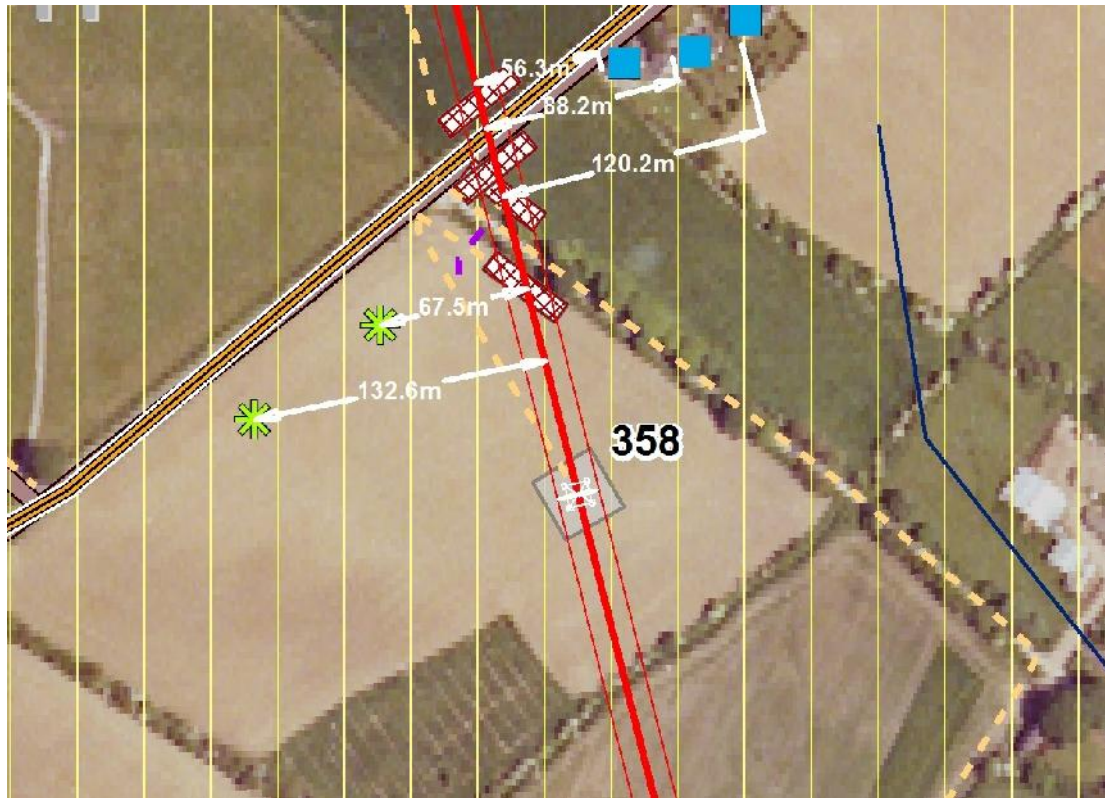


Table 15

Environmental Review Topic	Tower 358 and Guarding Access Route Comment
Ecology	The access route delineated in purple, within the context of the improved agricultural land and managed hedgerows, will not have any appreciable effect on the significance of the ecological impact evaluation at this location. There is no change to the overall ecological impact evaluation.
Cultural Heritage	There are no cultural heritage issues with the access route delineated in purple.
Traffic	Access to Tower 358 is via the same local road (L22051). There is no change to traffic movements.
Water/Soils/Geology	Soil and subsoil types are similar for both access routes, as is the water environment; therefore there are no significant impacts identified.
Agronomy	The proposed route delineated in purple is similar in length to the original proposal and will not significantly change the overall impact on this land parcel.

Tower 364 – LMC 043-1; LMC 043-2; LMC 043-3; LMC 043-4.

Figure 16

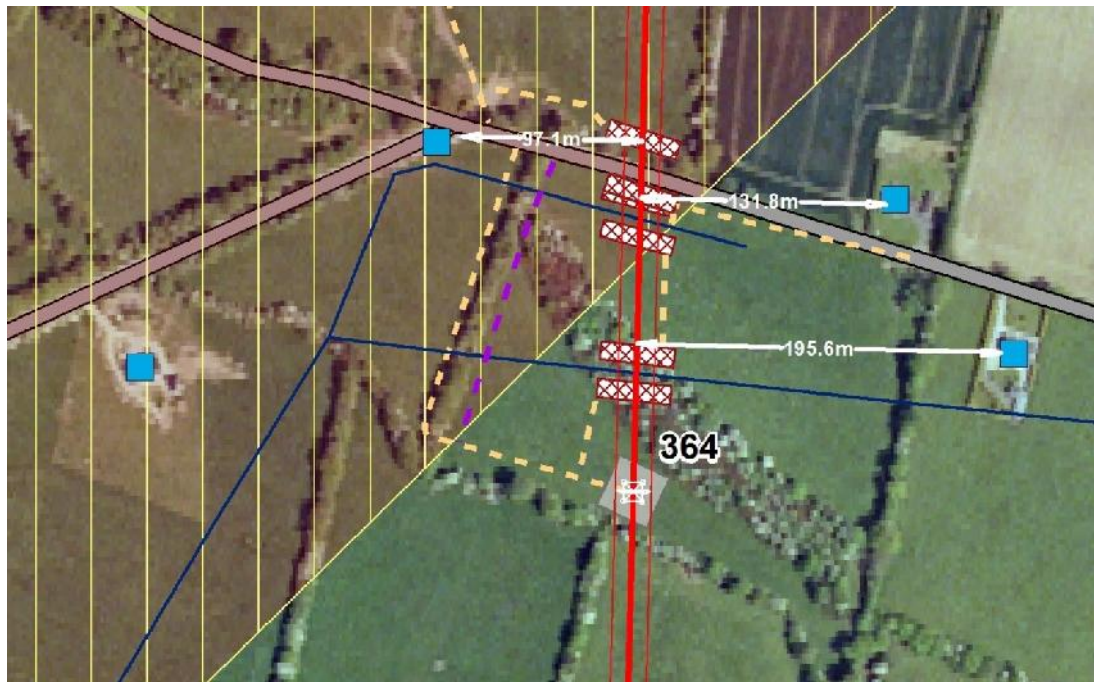


Table 16

Environmental Review Topic	Tower 364 Access Route Comment
Ecology	The route delineated in purple uses an existing access from the road and an existing access within the field. This will not have any appreciable effect on the significance of the overall ecological impact evaluation.
Cultural Heritage	There are no cultural heritage issues with the access route delineated in purple; utilising the existing road entrance and field access for the alternative route is preferred.
Traffic	Access to Tower 364 is via the same local road, where the route delineated in purple will use an existing entrance gate. There is no change to traffic movements.
Water/Soils/Geology	Soil and subsoil types are similar for both access routes, as is the water environment; therefore there are no significant impacts identified.
Agronomy	The route delineated in purple is similar in length to the original proposal, but utilises an existing entrance gate and will not significantly change the impact on this land parcel.

Tower 365 – LMC-042

Figure 17

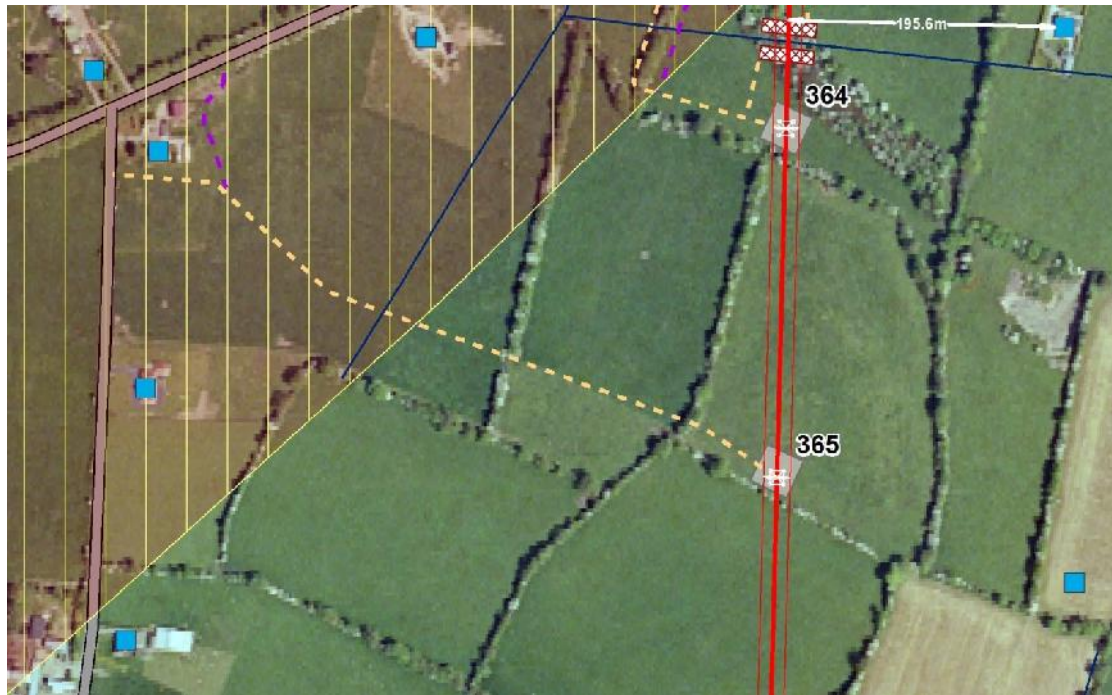


Table 17

Environmental Review Topic	Tower 365 and Guarding Access Route Comment
Ecology	The access route delineated in purple uses existing access at the farm premises. This will not have any appreciable effect on the significance of the overall ecological impact evaluation.
Cultural Heritage	There are no cultural heritage issues with the access route delineated in purple.
Traffic	Access to Tower 365 is via a tertiary road to the north, utilising an existing access at a farm premises. There is no change to traffic movements.
Water/Soils/Geology	Soil and subsoil types are similar for both access routes, as is the water environment; therefore there are no significant impacts identified.
Agronomy	The access route delineated in purple is of a similar length and uses an existing farmyard entrance, potentially increasing temporary disturbance. However, this will not significantly change the impact on this land parcel.

Tower 380 Guarding – LMC 027

Figure 18

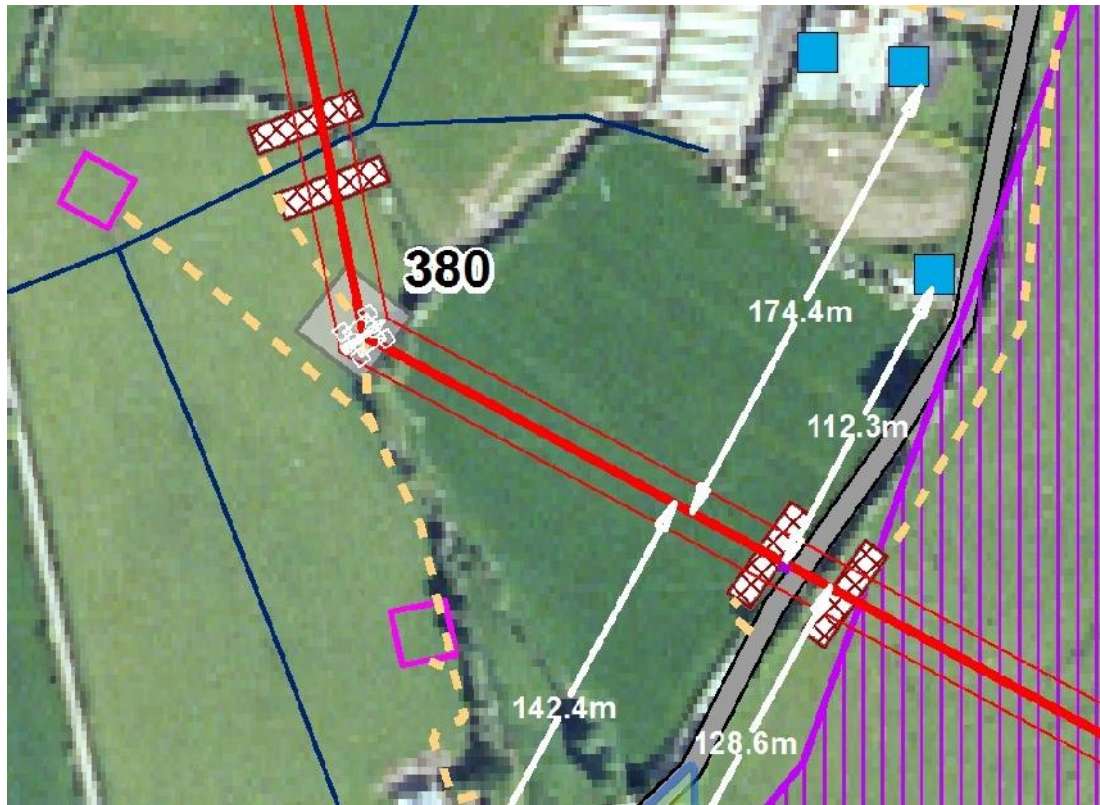


Table 18

Environmental Review Topic	Tower 380 Guarding Access Route Comment
Ecology	The access route shown in purple, within the context of the improved agricultural land and managed hedgerows, will not have any appreciable effect on the significance of the ecological impact evaluation at this location.
Cultural Heritage	There are no cultural heritage issues with the access route delineated in purple.
Traffic	Access to Tower 380 is via the same public road. There is no change to traffic movements.
Water/Soils/Geology	Soil and subsoil types are similar to the previous route, as is the water environment; therefore there are no significant impacts identified.
Agronomy	The route delineated in purple is slightly shorter in length than the original proposal and utilises an existing entrance gate. The route shown in purple will not significantly change the overall impact on this land parcel.

Tower 136 & Guarding – LCT073

Figure 19



Table 19

Environmental Review Topic	Tower 136 Access Route Comment
Ecology	The access route delineated in purple utilises an existing farm entrance and field gate. Within the context of the baseline improved agricultural land and managed hedgerows, this change will not affect the significance of the ecological impact evaluation at this location.
Cultural Heritage	The route shown in purple will pass in proximity to a feature recorded on the 1 st Ed. Ordnance Survey map; possibly a lime-kiln, well, or spring. This feature is no longer extant and is not visible on the surface. It is recommended that this area be demarcated and avoided. Avoidance will result in no direct physical impact on the feature.
Traffic	Access to Tower 136 is via the same public road (L3402). There is no change to traffic movements.
Water/Soils/Geology	Soil and subsoil types are similar to the previous route, as is the water environment; therefore there are no significant impacts identified.
Agronomy	The route delineated in purple will use an existing farm entrance and field gate to the tower, potentially increasing disturbance. However, this will not significantly change the overall impact on this land parcel.