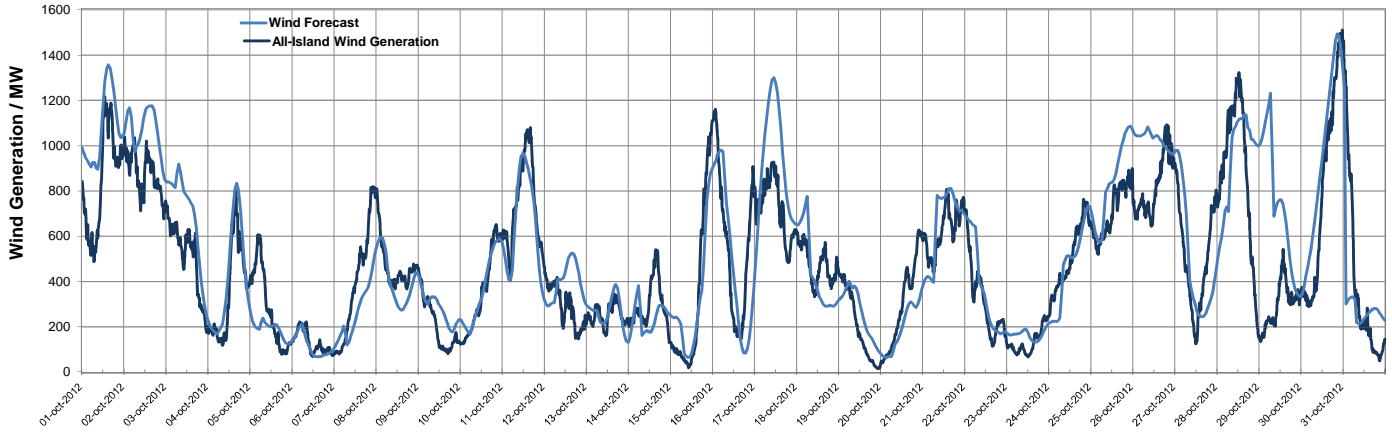


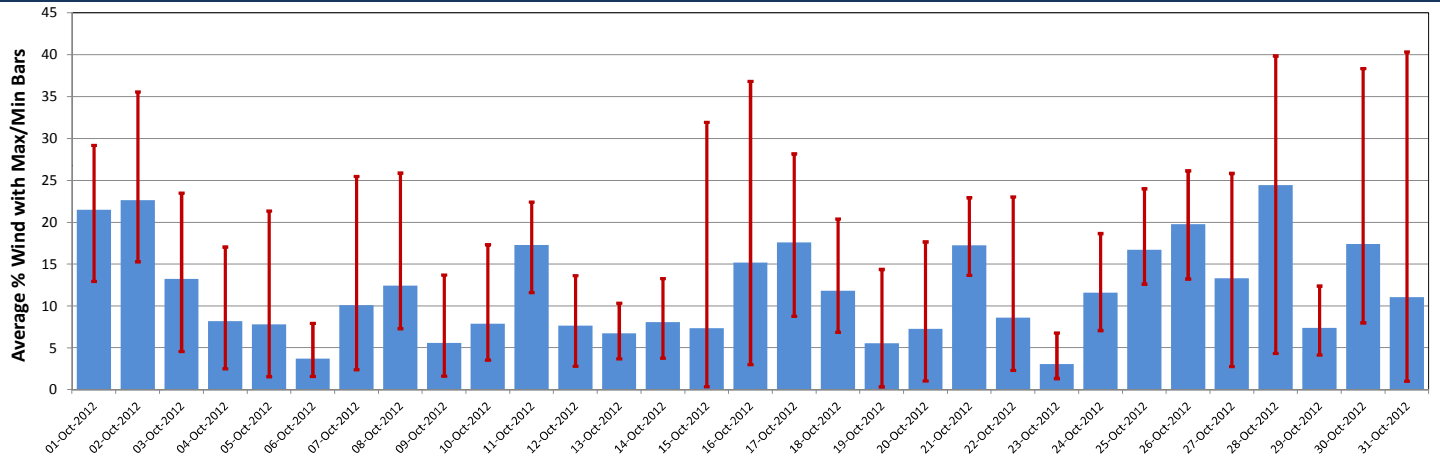
▼ System Data ▼

TSO	Installed Wind Capacity (MW)	Wind (MW)			Wind GWhrs	Monthly Wind Capacity Factor %	Demand* (MW)			Total GWhrs	Wind Penetration %			SNSP Max	Avg Abs Forecast Error
		Max	Min	Avg			Max	Min	Avg		Max	Min	Avg		
EirGrid	1637	1172	14	389	289	23.8	4345	1942	3077	2289	42.2	0.5	13.1		
SONI	451	364	0	81	60	18.0	1585	633	1045	777	45.5	0.0	8.3		
All-Island	2088	1512	15	470	350	22.5	5899	2579	4112	3060	40.4	0.4	11.9	45.8	7.61%

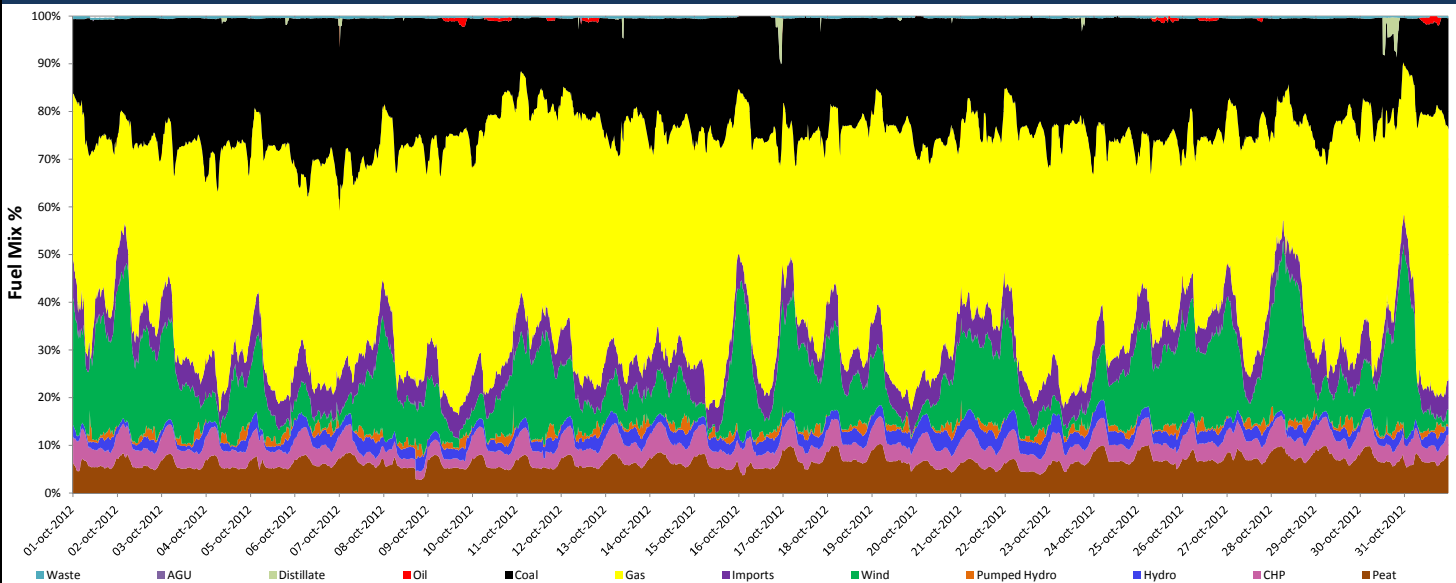
▼ All-Island Wind Generation and Forecast Wind ▼



▼ Average Daily Wind Penetration ▼



▼ Fuel Mix 15 minute Time-Series ▼



▼ General Information / Notes ▼

*Demand Data is based on Export plus Generation House Load
 System Data is based on 15-minute SCADA data
 Installed Wind MW based on SCADA and Registered data
 The maximum wind generation in the different jurisdictions does not necessarily occur at the same time
 SNSP - System Non-Synchronous Penetration is the sum of Wind generation and HVDC imports as a percentage of total generation
 While every effort has been made in the compilation of this report to ensure that the information herein is correct we cannot accept any responsibility or liability for any damage howsoever caused by reliance on the information presented here.

