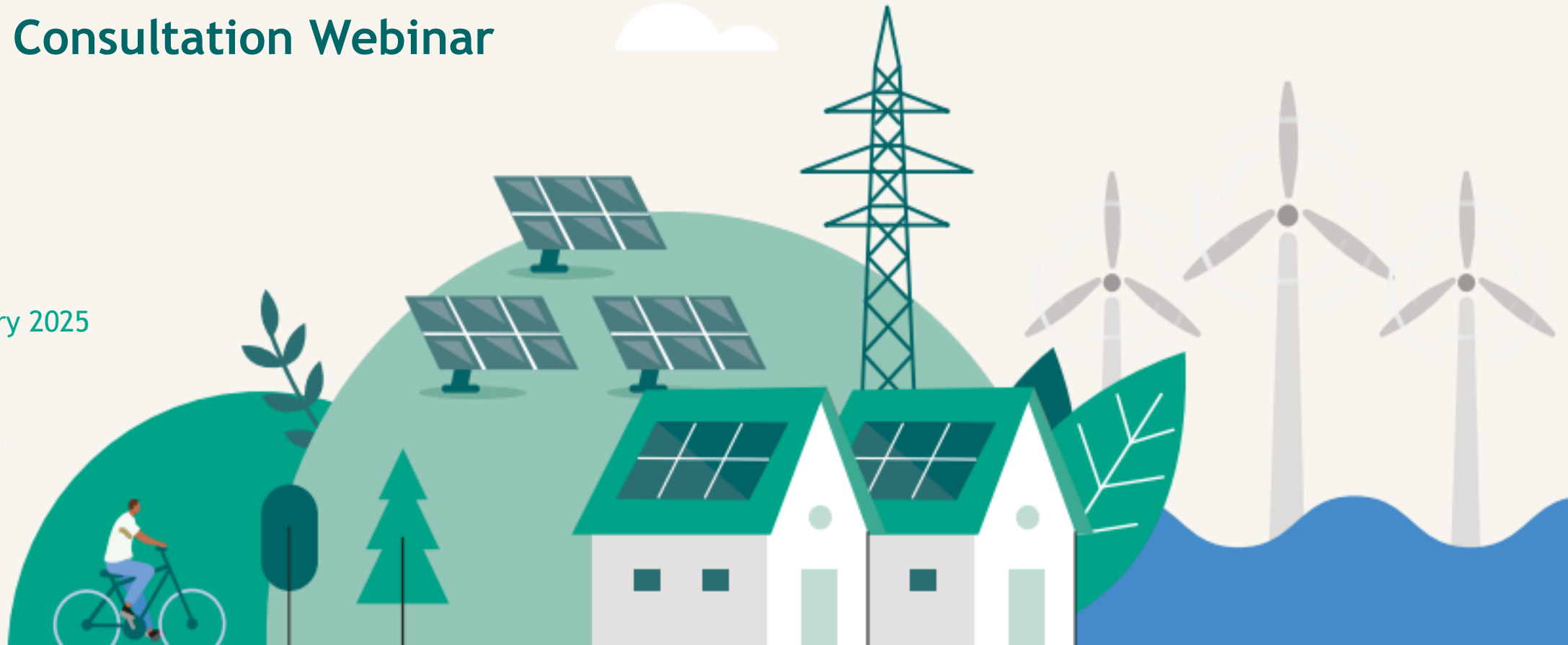


# Powering Up Offshore - South Coast



Public Consultation Webinar

13<sup>th</sup> January 2025



# Agenda

1. Arrival and introductions
2. Project presentation
3. Q&A

# Panel

- **Garry Murphy, EirGrid** - Phase 2 Programme Director for Offshore Delivery
- **Graham Parker, EirGrid** - Public Engagement Programme Manager
- **Eoghan O’Sullivan, EirGrid** - Community Liaison Officer
- **Michelle Walsh, EirGrid** - Community Liaison Officer
- **Robert Fennelly, EirGrid** - Senior Lead Ecologist
- **Ronan Lynch, EirGrid** - Fisheries Liaison Officer
- **Donna Hassett, Mott MacDonald** - Lead Planning and Environmental Consultant on the PUOSC project
- **Mike Wiseman, Doris Group** - Technical Director, EirGrid South Coast Programme

# Who is EirGrid

EirGrid develops, manages, and operates Ireland's electricity grid.

We are responsible for the safe, secure and reliable supply of Ireland's electricity.

Our job is to bring power from where it is generated to where it is needed throughout Ireland, onshore and offshore.



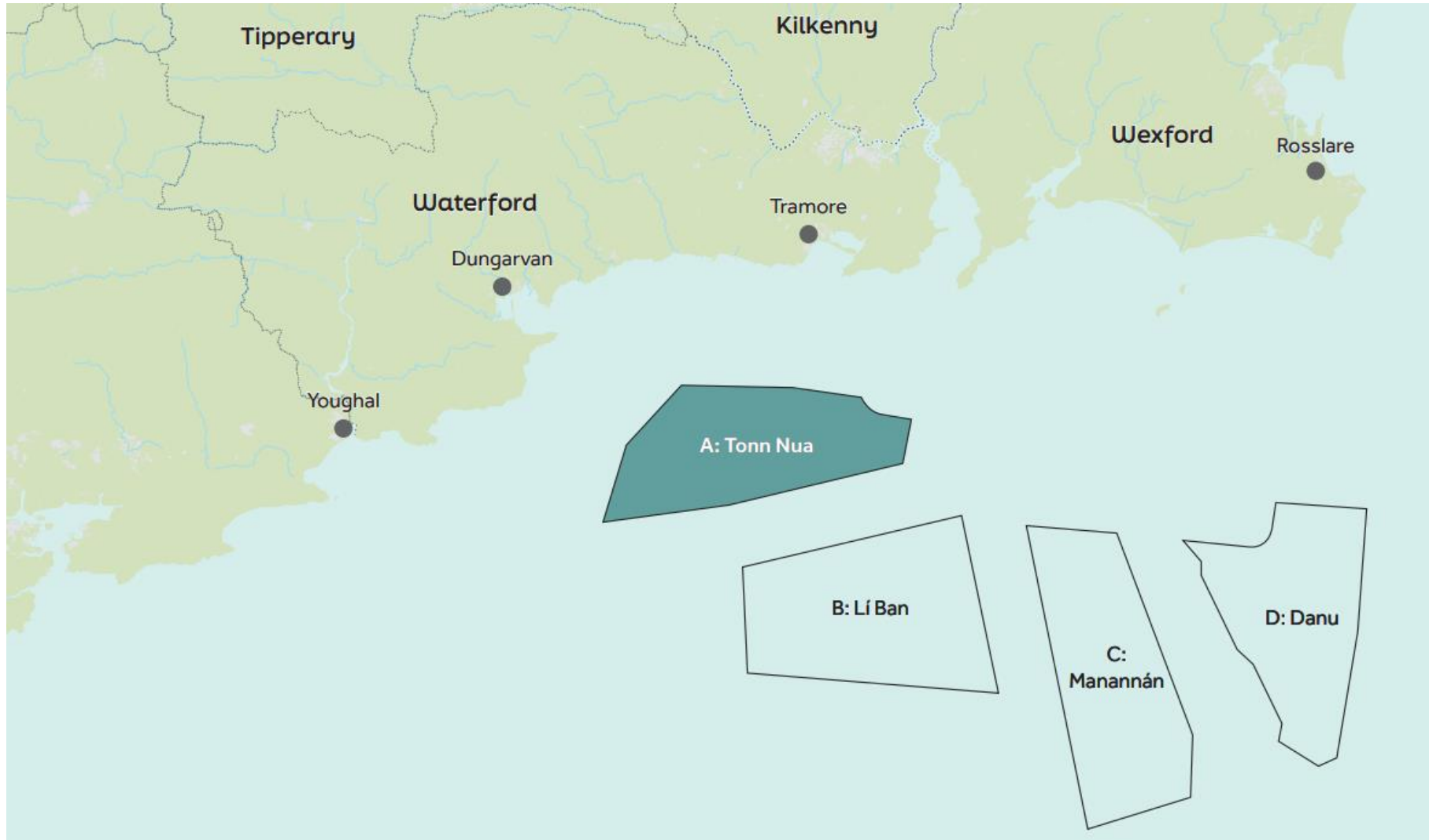
# Project Need

The Government's Climate Action Plan 2024 aims for Ireland to get 80% of the state's energy needs coming from renewable energy sources.

Powering Up Offshore - South Coast is a project to build the new transmission grid infrastructure needed to bring power generated by offshore windfarms into our national grid.

This will help deliver approximately 900 megawatts of additional electricity - enough to power almost one million homes.

# Designated Maritime Area Plan - South Coast (DMAP-SC)



- The Draft SC - DMAP was recently approved by the Oireachtas
- The SC-DMAP includes four proposed areas for future offshore wind development. The first area off the south coast that will host offshore wind farm development is area A, Tonn Nua.

# Project Overview

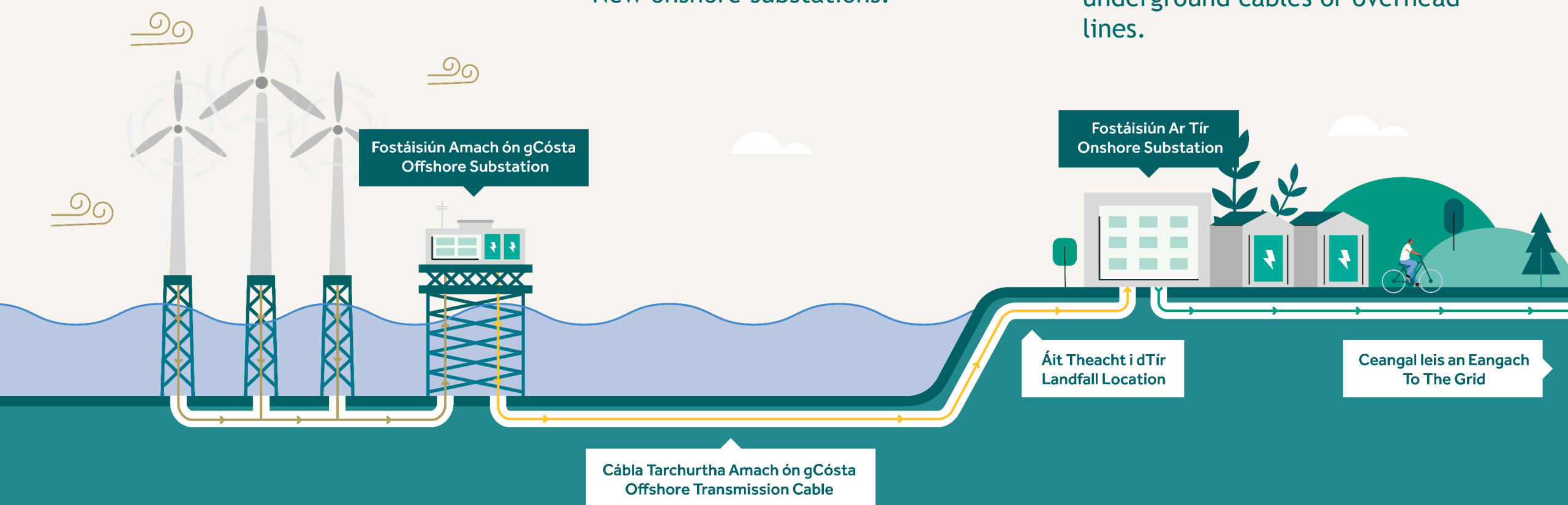
The main components of this project are:

- Two offshore substation platforms - to be located within the Maritime Area A, also known as Tonn Nua.

The following will then be required in County Cork and in County Waterford/Wexford:

- Offshore transmission cables connecting offshore substations to landfall locations.
- New onshore substations.

- Connections between landfalls and new onshore substations by underground cables.
- Loop-in connections to the existing electricity transmission network from the new substations by either underground cables or overhead lines.





# Powering Up Offshore South Coast Project Overview Map



**Eochair eolaís | Legend**

- Criosanna Bonneagair | Infrastructure Zones
- - - - Iarratas ar Cheadúnas Úsáide Muirí | Maritime Usage Licence Application
- ▭ Criosanna Nasctha Eangal Féideartha | Potential Grid Connection Zones
- Fostáilín atá ann cheana | Existing Substations
- ⚡ Stáisiún Tiontaire Idinascáire Ceilteigh | Celtic Interconnector Converter Station
- Áiteanna teacht | dtír atá á meas (A-C) | Landfall Locations under consideration (A-C)
- Áiteanna teacht | dtír atá á meas (D) | Landfall Locations under consideration (D)
- Áiteanna teacht | dtír atá á meas (E-G) | Landfall Locations under consideration (E-G)

**Suíomh na dTránna | Beach Locations**

1. Cuan na Carráige   Rocky Bay	14. Cuan an tSlaoid   Slade Harbour
2. Trá Chorcaigh Bheag   Corkbeg Beach	15. Dún Mór   Dunmore East
3. Cuan Bhan   White Bay Beach	16. Cuan Rath Mhacaláin   Rathmoylan Cove
4. Ceann Chnoc an Dúin   Knockisadeen Head	17. Trá Mhór   Tramore Beach
5. Trá Cheann an Bhéhair   Redbarn Beach	18. Trá Gharbhros   Garraross Beach
6. Trá An Chaisleán Chría   Claycastle Beach	19. Trá Bhun Abha   Annestown Beach
7. Trá Chluain Aodha   Clonea Beach	20. Trá Chuan Chilé Eilín   Killeiton Bay Beach
8. Cill Fhearghása   Kilfarrasy	21. Cuan Bhaile Uí Mhúinigh   Ballyvooney Cove
9. Trá Bhaile Chuilín   Cullenstown Beach	22. Cuan Bhaile Uí Dhúsháin   Ballygouane Bay
10. Trá Chuan Bhanú   Bannou Bay Beach	23. An Cuan Coach   Stradbally Cove
11. Trá na Gráinsí   Grange Beach (Fethard)	24. Trá Fhíadh Ard   Fethard Beach
12. Trá na Gráinsí   Grange Beach (Fethard)	
13. Trá an Chorr Ghainimh   Sandeel Beach	



# Infrastructure Zones

- Grid Infrastructure zones are the areas identified within which the onshore elements of the projects are proposed, for Step 3, this includes:
  - **Landfall Zones** - A Landfall Zone is where the offshore transmission cable will come ashore and connect to the land cable. Two landfall locations from the short list below are required, one in County Cork and one in County Waterford/Wexford
  - **Grid Connection Zones** - These are the proposed locations for the siting of new substations. The electricity coming from the offshore wind generation will connect into these new substations which will then connect into the national electricity network.

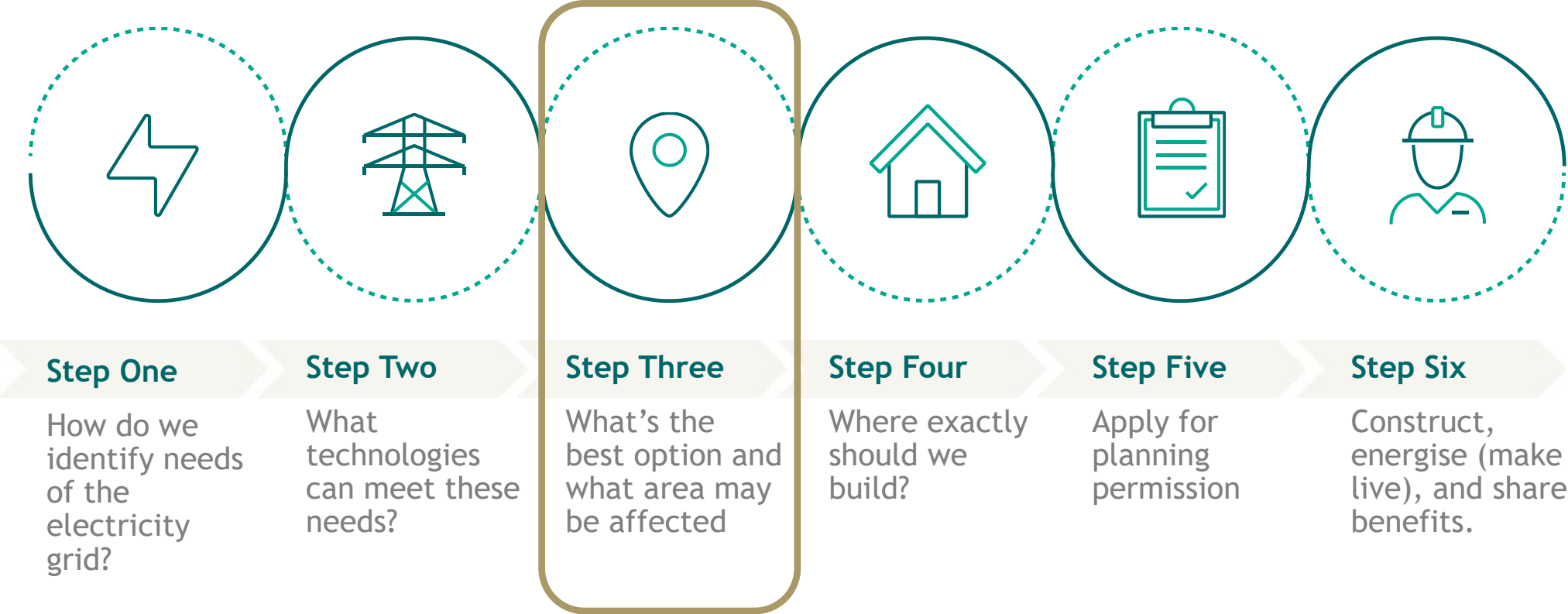
# Landfall Zones

A	Cork	Located within the townlands of Ballintra East, Inch, and Lahard.
B	Cork	Located in the townlands of Ballybranagan, Ballycroneen West, Ballyrobin South and Ballycroneen East.
C	Cork	Located within the townlands of Garryvoe Lower, Ballybutler and Ballycrenane.
D	Waterford	Located within the townlands of Knockmahon, Templeyvrick, Ballynasissala and Ballynagigla.
E	Wexford	Located within the townlands of Ramstown.
F	Wexford	Located within the townlands of Bannow.
G	Wexford	Located within the townlands of Blackhall, Haggard, Ballymadder, Loftusacre.

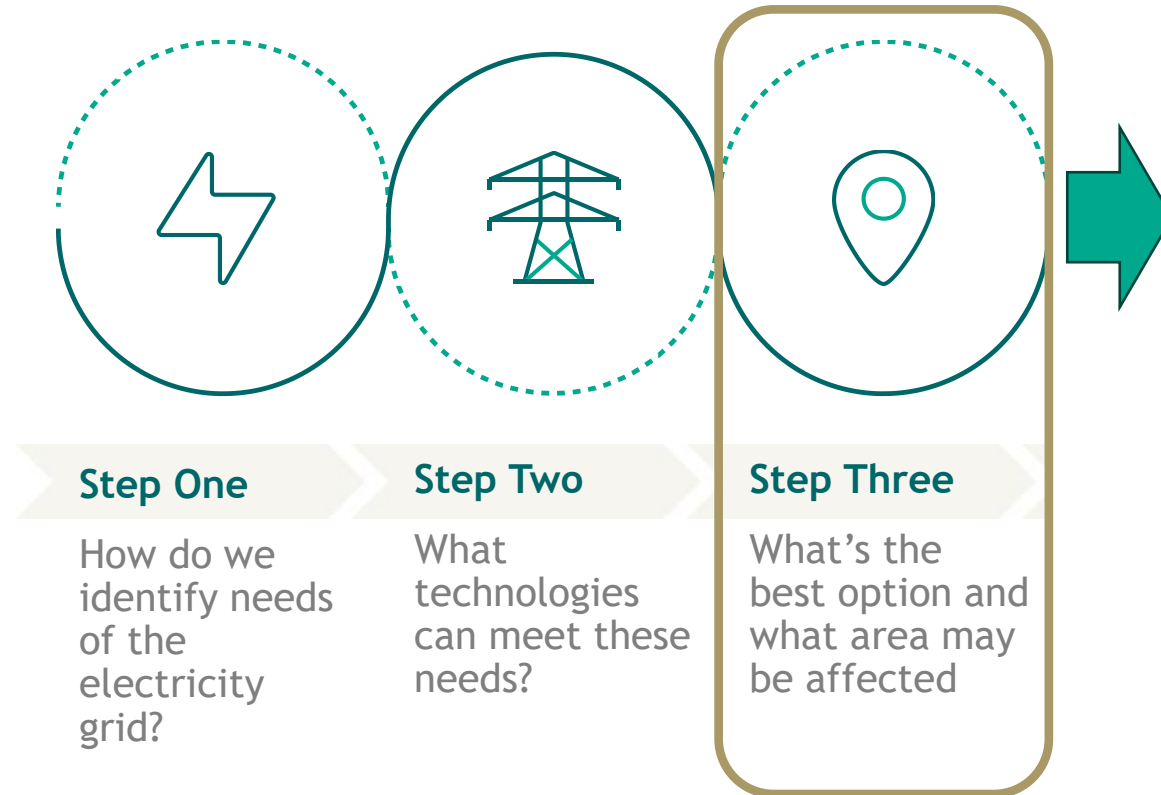
# Our 6 Step Approach to Project Development



# Our 6 Step Approach to Project Development



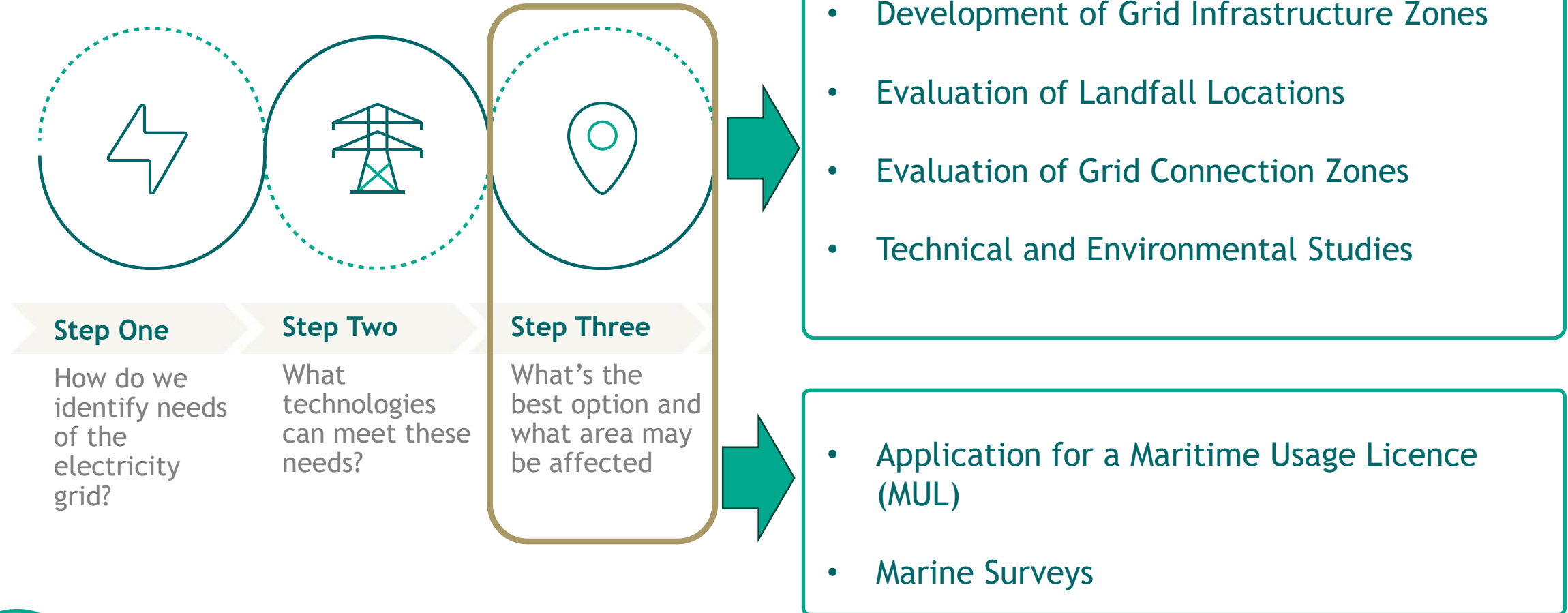
# What's happening during Step 3



## Public Consultation

- Development of Grid Infrastructure Zones
- Evaluation of Landfall Locations
- Evaluation of Grid Connection Zones
- Technical and Environmental Studies

# What's happening during Step 3





# Powering Up Offshore South Coast Project Overview Map



**Eochair eolaís | Legend**

- Criosanna Bonneagair | Infrastructure Zones
- - - Iarratas ar Cheadúnas Úsáide Muirí | Maritime Usage Licence Application
- ▭ Criosanna Nasctha Eangal Féideartha | Potential Grid Connection Zones
- Fostáilín atá ann cheana | Existing Substations
- ⚡ Stáisiún Tiontaire Idinascáire Ceilteigh | Celtic Interconnector Converter Station
- Áiteanna teacht | dtír atá á meas (A-C) | Landfall Locations under consideration (A-C)
- Áiteanna teacht | dtír atá á meas (D) | Landfall Locations under consideration (D)
- Áiteanna teacht | dtír atá á meas (E-G) | Landfall Locations under consideration (E-G)

**Suíomh na dTránna | Beach Locations**

1. Cuan na Carráige   Rocky Bay	14. Cuan an tSlaoid   Slade Harbour
2. Trá Chorcaigh Bheag   Corkbeg Beach	15. Dún Mór   Dunmore East
3. Cuan Bhan   White Bay Beach	16. Cuan Rath Mhacaláin   Rathmoylan Cove
4. Ceann Chnoc an Dúin   Knockisodon Head	17. Trá Mhór   Tramore Beach
5. Trá Cheann an Bhéhair   Redbarn Beach	18. Trá Gharbhros   Garraross Beach
6. Trá An Chaisleán Chría   Claycastle Beach	19. Trá Bhun Abha   Annestown Beach
7. Trá Chluain Aodha   Clonea Beach	20. Trá Chuan Chilé Eilín   Killeiton Bay Beach
8. Cill Fhearghása   Kilfarrasy	21. Cuan Bhaile Uí Mhúinigh   Ballyvooney Cove
9. Trá Bhaile Chuilinn   Cullenstown Beach	22. Cuan Bhaile Uí Dhúsháin   Ballygouane Bay
10. Trá Chuan Bhanú   Bannou Bay Beach	23. An Cuan Coach   Stradbally Cove
11. Trá na Gráinsí   Grange Beach (Fethard)	24. Trá Fhíadh Ard   Fethard Beach
12. Trá na Gráinsí   Grange Beach (Fethard)	
13. Trá an Chorr Ghainimh   Sandeel Beach	

# Cork Infrastructure Zone

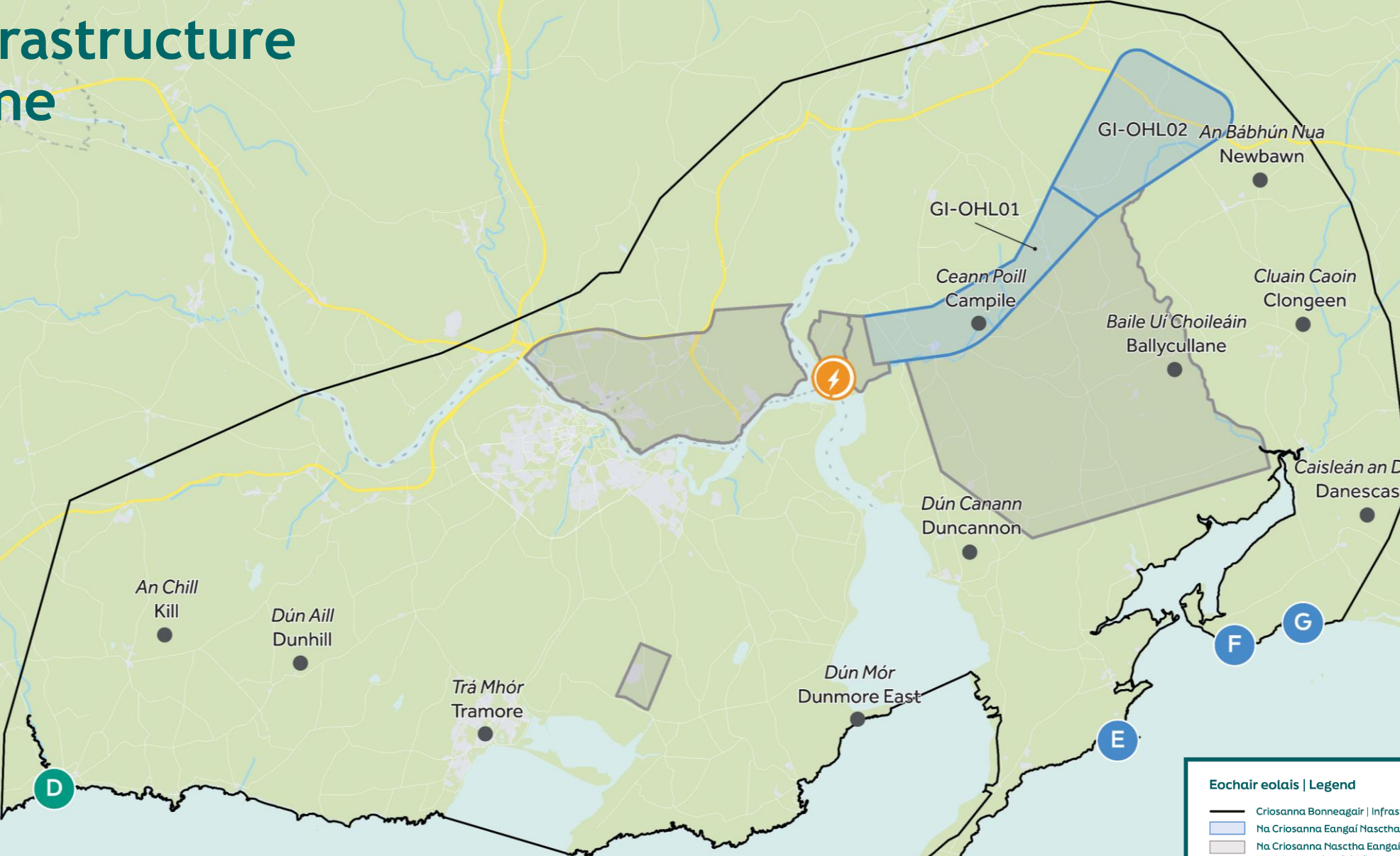


**Eochair eolais | Legend**

- Criosanna Bonneagair | Infrastructure Zones
- Na Criosanna Eangaí Nasctha is Fearth Feidhmíocht | Best Performing Grid Connection Zones
- Na Criosanna Nasctha Eangaí nach bhfuil Dul Chun Cinn ag Teach Orthu Non-Progressing Grid Connection Zones
- Fostáisiúin atá ann cheana | Existing Substations
- Stáisiún Tiontaire Idirnascaire Ceiltigh | Celtic Interconnector Converter Station
- Áiteanna teacht i dtír atá á meas (A-C) | Landfall Locations under consideration (A-C)



# Waterford/Wexford Infrastructure Zone



**Eochair eolais | Legend**

- Críosanna Bonneagair | Infrastructure Zones
- Na Críosanna Eangaí Nasctha is Fearr Feidhmíocht | Best Performing Grid Connection Zones
- Na Críosanna Nasctha Eangaí nach bhfuil Dul Chun Cinn ag Teacht Orthu Non-Progressing Grid Connection Zones
- ⚡ Fostáisiúin atá ann cheana | Existing Substations
- Áiteanna teacht i dtír atá á meas (D) | Landfall Locations under consideration (D)
- Áiteanna teacht i dtír atá á meas (E-G) | Landfall Locations under consideration (E-G)

# Surrounding Grid Infrastructure



**Eochair eolais | Legend**

- Criosanna Bonneagair | Infrastructure Zones
- - - Iarratas ar Cheadúnas Úsáide Muirí | Maritime Usage Licence Application
- ▭ Criosanna Nasctha Eangal Féideartha | Potential Grid Connection Zones
- Cábla Tarchurtha 110 kV | 110 kV Transmission Cable
- Cábla Tarchurtha 220 kV | 220 kV Transmission Cable
- Greenlink HVDC go dtí an Bhreatain Bheag | Greenlink HVDC to Wales
- Celtic HVDC go dtí an Fhrainc | Celtic HVDC to France
- ⚡ Fostáisiúin atá ann cheana | Existing Substations
- ⚡ Stáisiún Tiontaire Idirnascaire Celtigh | Celtic Interconnector Converter Station
- Áiteanna teacht i dTír atá á meas (A-C) | Landfall Locations under consideration (A-C)
- Áiteanna teacht i dTír atá á meas (D) | Landfall Locations under consideration (D)
- Áiteanna teacht i dTír atá á meas (E-G) | Landfall Locations under consideration (E-G)



# Maritime Usage License



# Maritime Usage Licence (MUL)

This is a license granted by the Maritime Area Regulatory Authority (MARA).

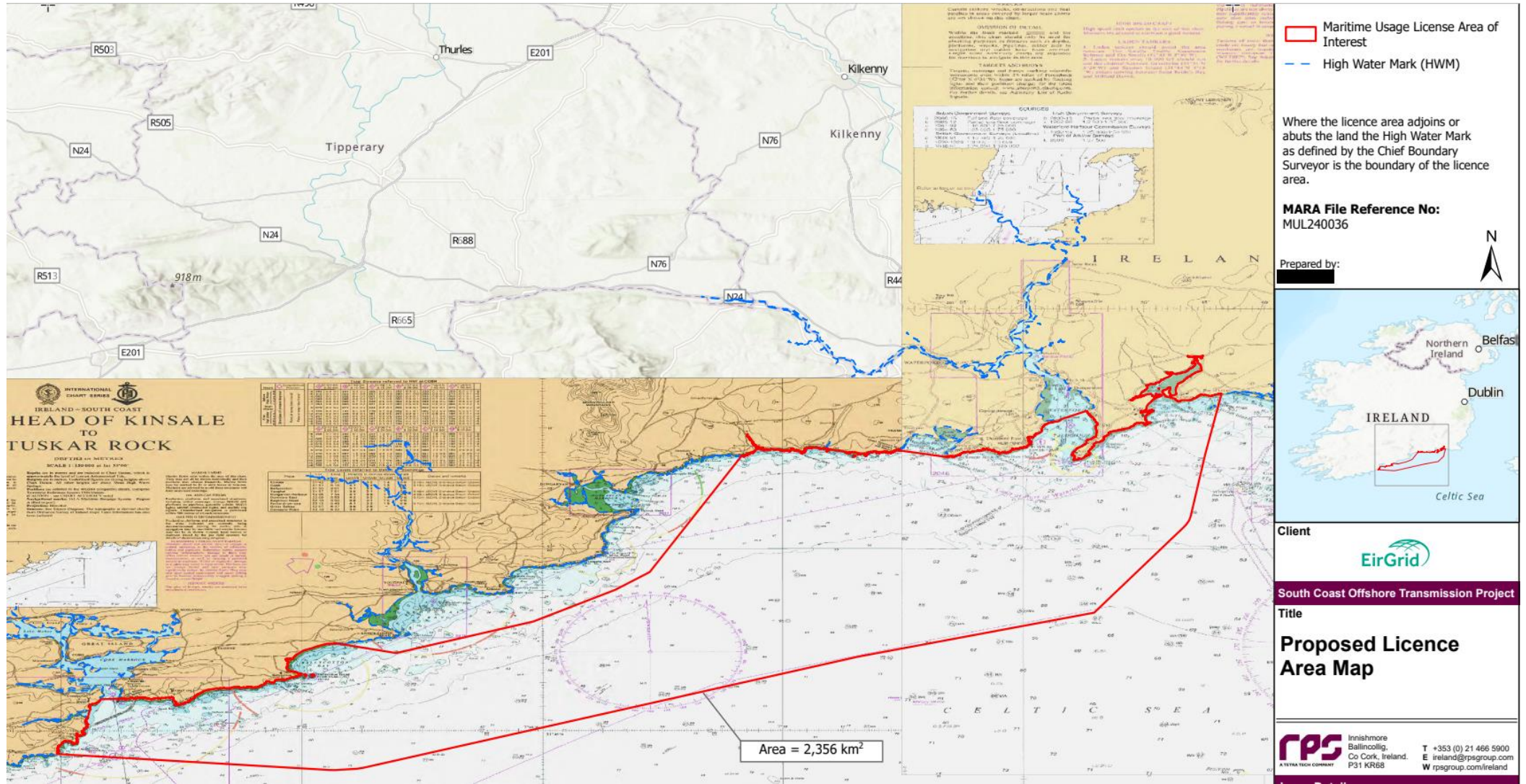
A MUL is required for EirGrid to undertake detailed marine surveys to provide information to inform the design of the offshore cable, offshore platforms and landfall locations.

EirGrid has made an application for the MUL to MARA. MARA will undertake an evaluation of the application including screening for Appropriate Assessment. If screened in, the application will be subject to a minimum of 30 days public consultation.





# MUL Application Area



# Step 3 Consultation

- The public consultation commenced on Tuesday 12<sup>th</sup> November 2024 and runs until Friday 24<sup>th</sup> January 2025 - we want to hear your thoughts and suggestions.
- You can get involved in the future of energy generation and provide feedback in a range of ways:
  - You can make a submission via EirGrid's consultation portal here:  
<https://consult.eirgrid.ie/en/consultation/powering-offshoresouth-coast-step-3-consultation>
  - Email your submissions to [southcoastoffshore@eirgrid.ie](mailto:southcoastoffshore@eirgrid.ie)
  - Or submit your response in hard copy via free post to the following address:  
Powering Up Offshore - South Coast  
Step 3 Consultation, EirGrid plc,  
Freepost FDN 5312, 160 Shelbourne Road,  
Ballsbridge, Dublin 4D04 FW28

## PUOSC Step 3 - Public consultations

Location	Date	Time
Garryvoe Hotel, Garryvoe, Ballylongane, East, Co. Cork, P25 DR94	Tuesday 19 November	11am-6pm
Copper Coast UNESCO Global Geopark, Ballynasissala, Bunmahon, Co. Waterford, X42 T92	Wednesday 20 November	11am-6pm
St Mary's Community Hall, St. Mary's Community Hall, Fethard, Co. Wexford, Y34 HH58	Thursday 21 November	11am-6pm
Halla Pobal Na Rinne, Maoil an Chóirne, An Rinn, Dún Garbhán, Co. Portláirge X35 XW29	Tuesday 26 November	11am-6pm
Aghada and District Community Centre, Aghada, Co. Cork P25 C576	Wednesday 27 November	11am-6pm
Carrig On Bannow Community Centre, Danescastle, Co. Wexford Y35 WF86	Tuesday 03 December	11am-6pm
Coastguard Cultural Centre, Doneraile Dr, Tramore West, Tramore, Co. Waterford, X91 HP63	Wednesday 04 December	11am-6pm
Churchtown South Community Hall, Ballycatoo, Cloyne, Co. Cork P25 AX24	Thursday 05 December	11am-6pm

# PUOSC Step 3 - Fishery consultations

Location	Date	Time
Regal Cinema, Youghal, Co. Cork P36 DA30	Tuesday 19 November	6pm-8pm
Stella Maris Centre, Kilmore Quay, Crossfarnoge, Co. Wexford Y35 TH9W	Monday 25 November	6pm-8pm
Halla Pobal Na Rinne, Maoil an Chóirne, An Rinn, Dún Garbhán, Portláirge X35 XW29	Tuesday 26 November	6pm-8pm
Crosshaven Community Centre, Crosshaven, Co. Cork P43 W968	Thursday 28 November	6pm-8pm
Dunmore East Library, Fishermans Hall, Dock Road, Dunmore East, Co. Waterford X91A310	Tuesday 3 December	6pm-8pm
Ballycotton Community Hall, Ballycotton, Co. Cork P25 HK83	Thursday 5 December	6pm-8pm

# Project Benefits



**Sustainability**: This project will enable homes and businesses across the Irish coast and beyond to use electricity generated from offshore renewable energy.



**Security and reliability of supply**: Building a more independent, resilient and reliable electricity grid helps ensure that everyone has power when and where they need it.



**Social and community**: EirGrid's community benefit policy will directly support local communities in the areas that host the programme infrastructure.



**Meet future needs**: As our society and economy develops, the programme will help us meet the growing demand for electricity, without increasing our carbon footprint.



**Economic**: This critical programme will help strengthen the economy across coastal regions, encouraging and supporting industry investment with accessibility to a strong electricity grid.



# Thank you

The Oval  
160 Shelbourne Road  
Ballsbridge  
Dublin 4  
D04 FW28

+353 (0)1 677 1700

