
Powering Up Offshore - South Coast

Step 3 Engagement and Consultation
Report
March 2025



Executive Summary

As part of Ireland’s move towards increasing offshore renewable energy on our national grid, EirGrid will be responsible for building the transmission grid infrastructure required to bring this energy onshore. Two offshore substation platforms are to be located within the Maritime Area A of the South Coast – Designated Maritime Area Plan (SC-DMAP), also known as Tonn Nua. This will require proposed new supporting infrastructure in Counties Cork, Waterford and/or Wexford, including offshore transmission cables connecting the offshore substations to landfall locations; new onshore substations; connections between landfalls and new onshore substations by underground cables; and loop-in connections to the existing electricity transmission network from the new substations by either underground cables or overhead lines.

A public engagement and consultation period “Powering Up Offshore - South Coast” ran from the 12th of November 2024 to the 24th of January 2025, which invited feedback on the proposed options for locating this new supporting infrastructure. Eight information events and two webinars were held over the course of this consultation, where members of the public could learn about the project and engage with EirGrid staff. Targeted engagement took place with key stakeholders including fishers, fishing industry representatives, landowners and local elected representatives. Consultation responses were accepted via an online consultation portal, by email or by post, and members of the public could make enquiries by contacting the Public Engagement team by phone or email.

33 formal consultation responses were received during the consultation period. These included responses from local residents, fishers, community groups, state bodies, business and other representative bodies. Feedback during information events and webinars and through contact with the Public Engagement Team was also considered and included as part of the process.

Common themes which arose included the visual impact of offshore infrastructure, economic impact on the fishing industry and tourism, wildlife and environmental concerns, and local disruption during the construction process. There were also submissions which were supportive of the project and the development of renewable energy infrastructure. While outside the scope of this consultation, a consistent theme in submissions and feedback was the location of Area: A Tonn Nua for the Powering Up Offshore South Coast project and as part of the SC-DMAP.

This report provides a summary of the engagement and consultation activities carried out by EirGrid at Step 3 – “What is the Best Option and What Area Might Be Affected” of Powering Up Offshore - South Coast and the findings from an independent review of all responses and feedback received. This feedback will be considered by EirGrid as it proceeds to Step 4 - “Where Exactly Should We Build” of Powering Up Offshore - South Coast.

M-CO, an independent consultancy specialising in public and stakeholder engagement and consultation, was commissioned to report on the findings from this process.

Contents

Executive Summary	2
Glossary Of Terms	4
1. About The Powering Up Offshore - South Coast Project.....	5
1.1. About EirGrid	5
1.2. Project Background	5
1.3. Step 3: “What is the Best Option and What Area might be Affected?	8
2. Engagement and Consultation Process.....	11
2.1. Communications Activities.....	11
2.2. Engagement Activities	13
2.3. Consultation Submissions.....	16
3. Analysis of Feedback	17
3.1. Summary of Consultation Responses and Feedback Received	17
3.2. Summary of Consultation Responses and Feedback Received – Locations.....	18
3.3. Summary of Themes.....	19
Appendix A: Designed Materials and Printed Collateral	24

Glossary of Terms

ALO	Agricultural Liaison Officer
CLO	Community Liaison Officer
FLO	Fisheries Liaison Officer
MUL	Maritime Usage Licence
MCA	Multi-Criteria Analysis
OOH	Out Of Home Advertising

1. About the Powering Up Offshore - South Coast Project

1.1. About EirGrid

EirGrid is a state-owned company that develops, manages, and operates Ireland’s electricity grid. They are responsible for the safe, secure, and reliable supply of Ireland’s electricity, bringing power from where it is generated to the distribution network that supplies the electricity we use every day in homes, businesses, schools, and hospitals. EirGrid is responsible for leading the secure transition of the electricity grid to a sustainable, low-carbon future.

EirGrid follows a 6-Step approach for all grid development projects (see graphic below), from the identification of a need to develop the electricity transmission grid through to their eventual construction and subsequent energisation. This process sets out the steps to be taken to identify and implement the best performing solution that meets the needs outlined.

1.2. Project Background

The aim of the Powering Up Offshore - South Coast project is to build the new transmission grid infrastructure needed to bring power generated by offshore windfarms into our national grid. The project is currently in Step 3 - “What is the best option and what area might be affected?”. During Step 3, EirGrid is evaluating options for Landfall Zones and Grid Connection Zones with the aim of identifying a short-list of options to bring forward to Step 4.



1.2.1. South Coast Designated Maritime Area Plan (SC-DMAP)

Developing the offshore electricity grid is key to harnessing Ireland’s offshore wind energy potential and providing greater security of electricity supply from a clean renewable source. As part of a plan-led approach to offshore renewable energy adopted by Government in 2023, all post Phase One ¹offshore wind projects in Ireland will be located within maritime areas identified for this purpose by Government through the establishment of DMAPs (Designated Maritime Area Plans).

¹ Phase One projects, which are developer led, will be the first offshore renewable energy projects which will contribute to Ireland’s energy and climate targets.

In 2024, the Department for the Environment, Climate and Communications (DECC) confirmed the South Coast Designated Marine Area Plan (SC-DMAP). The SC-DMAP represents a spatial government-led approach for the development of offshore wind farms and includes four proposed areas for future offshore wind development off the counties of Cork, Waterford and Wexford. The SC-DMAP was prepared following a series of public consultations by DECC between May and August 2024, which invited responses to the draft SC-DMAP and associated environmental assessments².

The first area off the south coast of Ireland that is designated to host offshore wind farm development is referred to as Area A, Tonn Nua. Wind energy produced in this area will deliver approximately 900 megawatts of additional electricity to the national grid - enough to power almost one million homes with clean energy.

EirGrid is the state body tasked with building the grid connections for the SC-DMAP under the framework of the Powering Up Offshore - South Coast project. When this infrastructure is in place, private developers will then build offshore wind farms. This process represents a change to the planning system from Phase 1 offshore wind developments, reflecting a plan-led approach to infrastructure development.

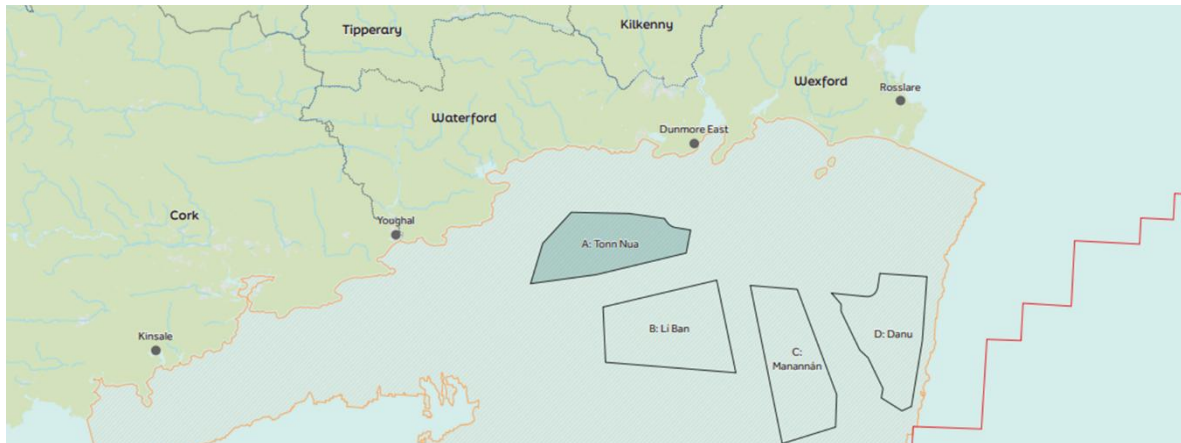


Figure 1: Illustration from public consultation materials highlighting area A - Tonn Nua within the SC-DMAP.

1.2.2. About the Project

This project encompasses both offshore and onshore elements, including:

- Two offshore substation platforms – to be located within the Maritime Area A, also known as Tonn Nua.
- Connection to the offshore substations via transmission cables to landfall locations. The following will then be required in County Cork and in County Waterford/Wexford:
 - New onshore substations.
 - Connections between landfalls and new onshore substations by underground cables.

² [Link to further information on the SC-DMAP: www.gov.ie/en/publication/20809-the-south-coast-designated-maritime-area-plan-for-offshore-renewable-energy-sc-dmap](http://www.gov.ie/en/publication/20809-the-south-coast-designated-maritime-area-plan-for-offshore-renewable-energy-sc-dmap)

- Loop-in connections to the existing electricity transmission network from the new substations by either underground cables or overhead lines.

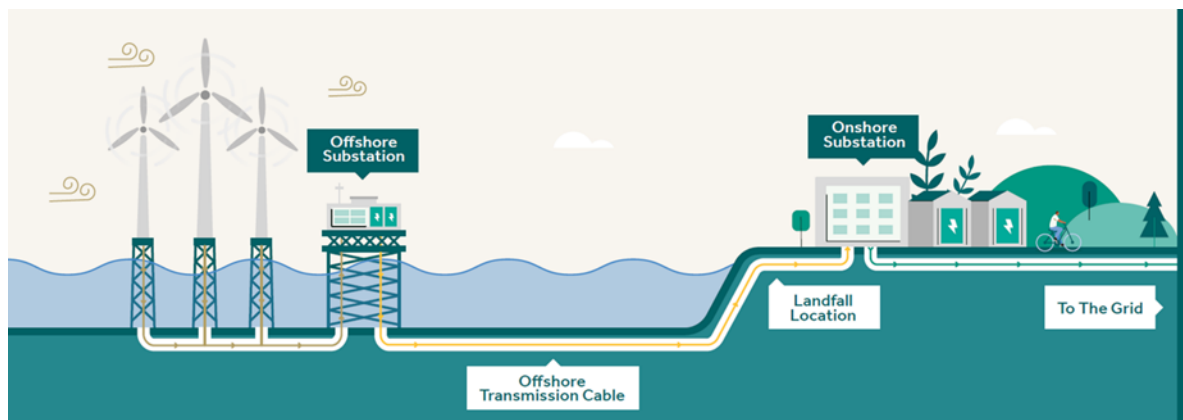


Figure 2: Illustration from Public Consultation Materials describing the main components of the proposed infrastructure.

1.2.3. Project Benefits

This project is a critical development on the journey to a renewable energy future in Ireland. The benefits include:

- Sustainability: This project will enable homes across Ireland to use electricity generated from offshore renewable energy.
- Security and reliability of supply: Building a more independent, resilient, and reliable electricity grid helps ensure that everyone has power when and where they need it.
- Social and community: EirGrid’s community benefit policy will directly support local communities in the areas that host the programme infrastructure.
- Meet future needs: As our society and economy develops, the programme will help EirGrid to meet the growing demand for electricity, without increasing our carbon footprint.
- Economic: This critical programme will help strengthen the economy across coastal regions, encouraging and supporting industry investment with accessibility to a strong electricity grid.

1.2.4. Maritime Usage Licence Application

EirGrid has applied for a Maritime Usage Licence (MUL) to explore the suitability of the marine areas under consideration as part of this project. The MUL is a critical step for this project, enabling EirGrid to undertake surveys within the maritime area. EirGrid actively engaged with local stakeholders, fishing communities, representatives from the Seafood & Offshore Renewable Energy Working Group and local councils, providing regular updates on the MUL licensing activities. Further details of this MUL application are available on the Maritime Area Regulatory Authority (MARA) website.³

³ [Link to Maritime Area Regulatory Authority \(MARA\) website: www.maritimeregulator.ie](http://www.maritimeregulator.ie)

1.3. Step 3: “What is the Best Option and What Area might be Affected?”

The Powering Up Offshore - South Coast Step 3 public consultation focussed on two key elements:

1. The landfall zones being considered for where the transmission cables will come ashore.
2. The infrastructure zones being considered for location of the grid connection substations.

This infrastructure will connect the Cork and Waterford/Wexford Infrastructure Zones off the South coast of Ireland with proposed landfall zones in Counties Cork, Waterford and Wexford. The proposed grid connection zones are in Counties Cork, Kilkenny, Waterford and Wexford.



Figure 3: Project Overview map.

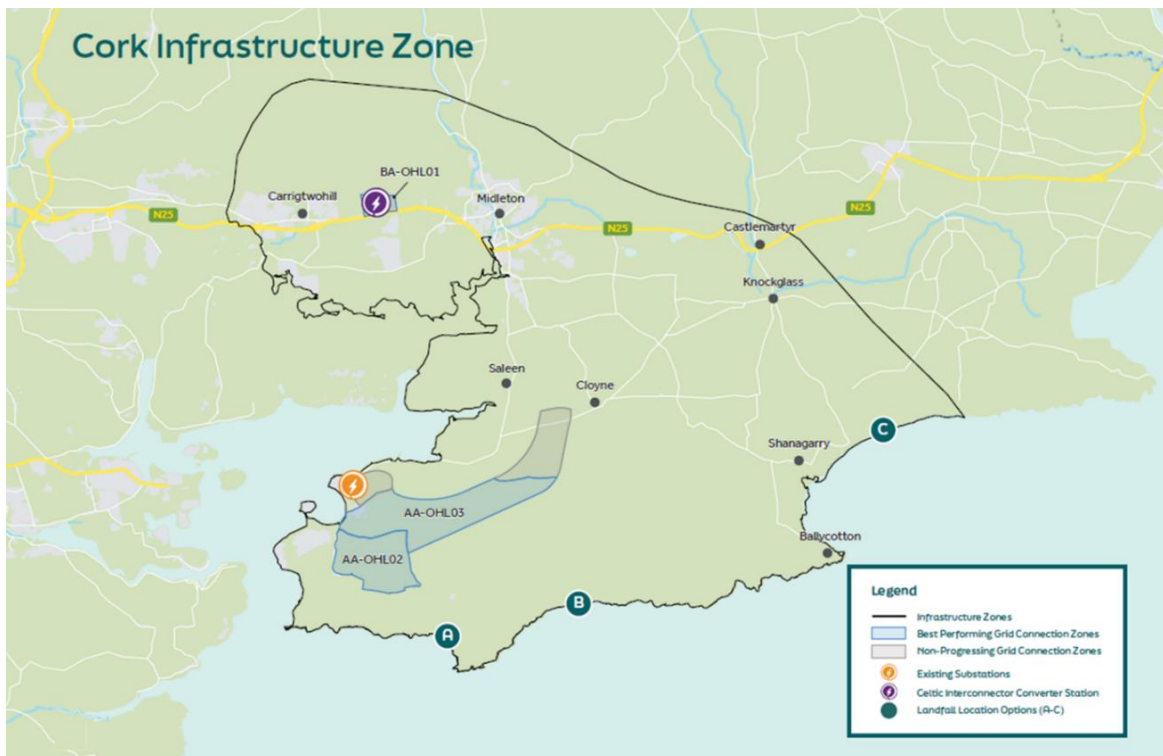


Figure 4: Cork Infrastructure Zone

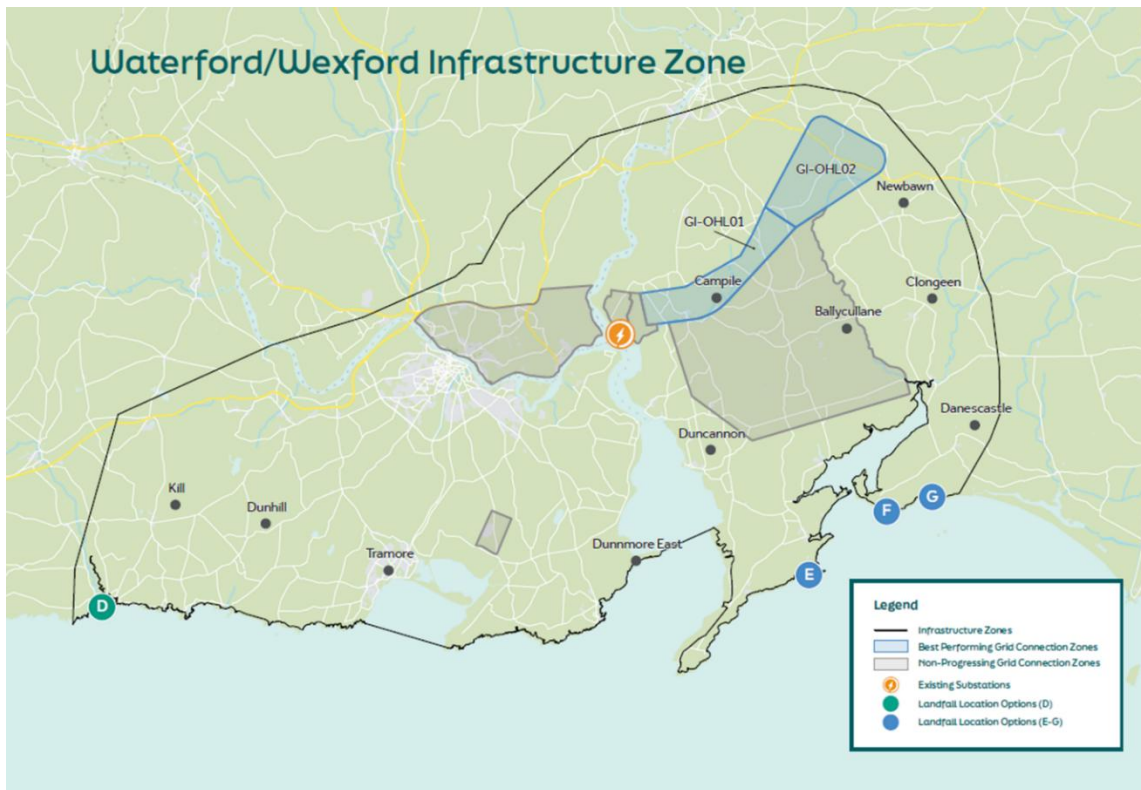


Figure 5: Waterford/Wexford Infrastructure Zone

1.3.1. Landfall Locations Under Consideration

Two landfall locations, where the offshore transmission cable will come ashore and connect to the land cable, will be selected from the shortlist to include:

- One in County Cork (A, B or C)
- One in County Waterford/Wexford (D, E, F or G)

Underground Transition Joint Bays (TJBs) will be required at the preferred landfall locations to connect the offshore cable to the onshore underground cable (UGC).

The TJB will be buried underground and will include:

- Underground concrete chambers which will house the joints between the Offshore Transmission Cables and the onshore UGC.
- Communications chamber(s), which will house the joint between the offshore communications / fibre optic cable and the onshore communications / fibre optic cable.
- Link box chamber(s), which will house the cable sheath earthing and connection design for the onshore and offshore high voltage cable.

Zone	County	Location
A	Cork	Located within the townlands of Ballintra East, Inch, and Lahard.

B	Cork	Located in the townlands of Ballybranagan, Ballycroneen West, Ballyrobin South and Ballycroneen East.
C	Cork	Located within the townlands of Garryvoe Lower, Ballybutler and Ballycrenane.
D	Waterford	Located within the townlands of Knockmahon, Templeyrick, Ballynasissala and Ballynagigla.
E	Wexford	Located within the townlands of Ramstown.
F	Wexford	Located within the townlands of Bannow.
G	Wexford	Located within the townlands of Blackhall, Haggard, Ballymadder, Loftusacre.

1.3.2. Substation Locations Under Consideration

Grid Connection Zones are proposed at a number of locations for the siting of new substations. The electricity coming from the offshore wind generation will connect into these new substations which will then connect into the national electricity network. The areas of focus for Grid Connection Zones are in proximity to:

1.	The existing Aghada 220 kV Substation and Aghada-Knockraha double overhead line in County Cork.
2.	The IDA site at Ballyadam, County Cork.
3.	Existing Great Island 220 kV Substation, Great Island-Kellis and Great Island-Lodgewood 220kV Overhead Lines in County Wexford.

2. Engagement and Consultation Process

EirGrid’s vision for engagement is to ensure that stakeholder perspectives inform decision-making; engagement is conducted in a consistent, transparent, and accessible way; and that engagement is tailored to suit the needs of stakeholders. To do this, EirGrid engages with many stakeholders throughout the lifecycle of projects. This engagement is crucial for informing and capturing feedback and knowledge that will influence the design and decision-making processes of projects. Effective public engagement ensures that stakeholder feedback is considered, fostering transparency and trust in the project's outcomes.

At Step 3 of the Powering Up Offshore - South Coast project, EirGrid delivered a programme of engagement and consultation. This took place between Tuesday 12th November 2024 to Friday 24th January 2025. The purpose of this engagement and consultation was to:

1. Inform local stakeholders about the project.
2. Seek feedback on the proposed landfall and grid connection zone locations.

Targeted stakeholders included:

- Fishing Community and Industry.
- Landowners, residents, businesses, schools, and voluntary groups within study area.
- Industry that might be affected.
- Local authorities and other utilities.
- Ecological, environmental and conservation groups.

2.1. Communications Activities

An awareness phase was launched on the 12th of November which included digital, print and OOH (Out of Home) Advertising. The consultation was then launched a week later with a social media campaign, a project webpage, video release and paid advertising. EirGrid developed an online consultation form, published project brochures and information, radio, media coverage, an interactive map of the study area and consultation materials.

2.1.1. Project Webpage

An online information page at www.eirgrid.ie/offshore was created which detailed the scope of the EirGrid project including maps of the study area; information on how to provide feedback and a link to the consultation portal; information on the EirGrid community forums; and a registration form for those who wished to stay updated on the project. Published documents on this website included:

- The Step 3 report “Emerging Best Performing Options Report” which details the process of selecting the current study areas and technology options.
- A video which visually communicates the key messages of the project, featuring an introduction from Sinead Dooley, Head of Public Engagement in EirGrid.
- Powering Up Offshore - South Coast - Have Your Say Project Update November 2024

- Powering Up Offshore - South Coast Public Consultation Webinar Recording from January 2025
- Powering Up Offshore - South Coast - Update Report
- Powering Up Offshore – South Coast Step 3 Consultation Webinar Recording
- Powering Up Offshore – South Coast Step 3 Consultation Webinar Presentation Slides

2.1.2. Interactive Map

An interactive map was created and published on the project webpage allowing users to navigate the areas being consulted on, including the SC-DMAP areas, landfall areas and proposed substation locations. Users could also input individual addresses to get an understanding of the project and how it may interact with their home, community or business.

The interactive map is located at [Powering Up Offshore South Coast Public Consultation Webmap](#).

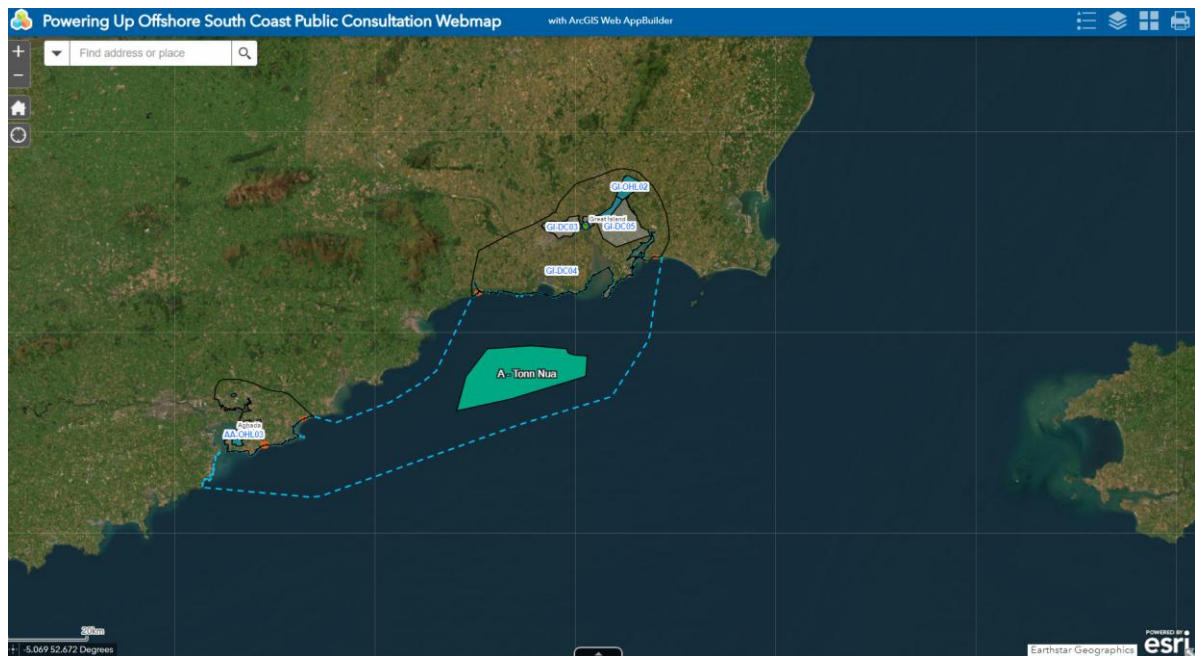


Figure 6: Public Consultation Interactive Map

2.1.3. Project Brochure

A detailed project brochure was developed and distributed at information events. This brochure detailed the scope of the EirGrid project including the aspects of the project that were being consulted on as well as providing information about upcoming information events and instruction on how the public could provide feedback.

2.1.4. Social Media

51 posts were shared across five platforms creating 59,201 impressions (i.e. the number of times a piece of social media content has been seen by users) and 1,057 engagements (i.e. the number of public interactions with a piece of social media content, such as a comment, “like” or share).

- X – 16 posts
- Instagram – 2 posts
- Facebook – 17 posts
- LinkedIn – 10 posts
- YouTube – 6 posts

2.1.5. Media Coverage

Media coverage included radio and print media, focused on local media and industry press. Types of coverage included articles, interviews, and paid advertisements.

- WRLFM
- South East Radio
- C103
- 96FM
- REDFM
- Waterford News & Star
- Dungarvan Observer
- Afloat.ie
- Marine Times
- The Fishing Daily
- The Echo
- Munster Express
- Cork Beo
- TheCork.ie
- New Ross Standard
- Gorey Guardian
- Enniscorthy Guardian
- Wexford People
- Southern Star
- Radio Interview, Community Radio Youghal, Drivetime Show: Michael Mahon, Chief Infrastructure Officer
- Michael Mahon, Irish Times Sponsored Piece
- Radio Interview, WLRFM Deise Today Show: Michael Mahon, Chief Infrastructure Officer
- Radio Interview, South East Radio Morning Mix Show: Michael Mahon, Chief Infrastructure Officer (Part of regular sponsorship)
- Radio Interview, South East Radio Morning Mix Show: Sinead Dooley, Head of Public Engagement EirGrid. (Part of regular sponsorship)
- Waterford News and Star Advertorial.

2.2. Engagement Activities

A broad range of engagement activities took place preceding and during the public consultation period with the objective of providing multiple avenues for communicating information and inviting feedback. These activities were led by EirGrid’s Public Engagement team, including Public Engagement Specialists, Community Liaison Officers, Fishery Liaison Officers, and Agricultural Liaison Officers. The Public Relations (PR) team were involved in developing communications, advertising, online materials and printed collateral as well as developing and delivering a communications plan.

Expert members of the cross functional team, from a range of disciplines including planning, technical, programme and project management were available to support the Public Engagement team in responding to requests for information in a timely manner. The name and email addresses of the Community Liaison Officers, Land Management Unit and Fisheries Liaison Officer were printed on widely distributed materials, to ensure members of the public had direct access to support they might require in understanding information or engaging with the consultation process.

Feedback was captured via feedback forms and event reports and has been assessed as part of this report. Event reports were prepared by EirGrid Engagement Staff following each engagement activities including information events, fisheries briefings and webinars, noting the number of attendees and any questions, feedback or concerns raised. This data will be considered alongside the consultation responses as the project moves into the next Step of development.

2.2.1. Public Information Events

8 information events were held during the consultation period, with over 200 people in attendance in total. The venues were chosen to ensure a geographical spread across the study areas.

- Tuesday 19 November, 11am-6pm: Garryvoe Hotel, Garryvoe, Ballylongane, East, Co Cork
- Wednesday 20 November, 11am-6pm: Copper Coast UNESCO Global Geopark, Ballynasissala, Bunmahon, Co Waterford
- Thursday 21 November, 11am-6pm: St Mary's Community Hall, St Mary's Community Hall, Fethard, Co Wexford
- Tuesday 26 November, 11am-6pm: Halla Pobal Na Rinne, Maoil an Chóirne, An Rinn, Dún Garbhán, Co Portláirge
- Wednesday 27 November, 11am-6pm: Aghada and District Community Centre, Aghada, Co Cork
- Tuesday 3 December, 11am-6pm: Carrig On Bannow Community Centre, Danescastle, Co, Wexford
- Wednesday 4 December, 11am-6pm: Coastguard Cultural Centre, Doneraile Dr, Tramore West, Tramore, Co Waterford
- Thursday 5 December, 11am-6pm: Churchtown South Community Hall, Ballycatoo, Cloyne, Co Cork

The aim of the information events was to inform people about the project, gather local knowledge about the proposed areas and to encourage facilitate consultation submissions. Each event included an exhibition of maps and information panels and EirGrid staff were available to discuss the project, concerns and general queries. Information was also shared regarding the formation of the Community Forum and the Community Liaison Officer gathered expressions of interest for joining from attendees. Irish language materials were present at all events, and Irish speaking EirGrid staff were available to explain the project, particularly in Gaeltacht areas.

2.2.2. Webinars

Two online webinars were held on Thursday 28th November and Monday 13th January at 7pm. Webinars were well attended, and one was recorded for later public viewing. The objective of the webinars was to provide information on the project and to facilitate questions to the EirGrid team. Project team members who attended to respond to queries were:

- Donna Hassett, Mott MacDonald – Lead Planning and Environmental Consultant on the Powering Up Offshore South Coast project
- Eoghan O'Sullivan, EirGrid – Community Liaison Officer
- Garry Murphy, EirGrid – Phase 2 Programme Director for Offshore Delivery

- Graham Parker, EirGrid – Public Engagement Programme Manager
- Mike Wiseman, Doris Group - Technical Director, EirGrid South Coast Programme
- Robert Fennelly, EirGrid – Senior Lead Ecologist
- Michelle Walsh, EirGrid – Community Liaison Officer
- Ronan Lynch, EirGrid – Fisheries Liaison Officer

The online webinars had 154 attendees in total which included strong representation from local industry, the community sector and local residents. It also included bodies from outside of the immediate area who represent the interest of local residents, such as state bodies and local development organisations.

2.2.3. Stakeholder Engagement

The Public Engagement team proactively engaged with key stakeholders in the study area, as well as key neighbouring stakeholders. Letters were sent to local authorities and port authorities offering one-to-one briefings.

A briefing was given to the Renewable Energy (ORE) Seafood Working Group, which was established by the Irish Government to facilitate discussion on matters arising from the interaction of the seafood and offshore renewable energy industries. As a member, EirGrid has a commitment to adhere to the principles for engagement as agreed by the Working Group. A briefing was also provided to Wind Energy Ireland.

2.2.4. Landowner Engagement

EirGrid's Agricultural Liaison Officers (ALO) met with landowners within the project study area and MUL boundary to provide project information, capture feedback and sentiment, and identify risks and opportunities for project design. This information is then fed back to the project team to analyse as part of the overall project design.

A letter was issued to 335 landowners within the Maritime Usage Licence (MUL) boundary on the week of 18th November 2024, with information on public information events.

2.2.5. Fisheries Engagement

EirGrid's Fisheries Liaison Officer (FLO) engaged with the fishing industry and connected with community members through phone calls, emails, port visits, public information events and fisheries briefings. The FLO responded to queries during online webinars which had a number of fishing industry representatives present.

A letter was issued to over 600 fisheries stakeholders in Cork, Waterford and Wexford in November with information on fisheries briefings and the public information events being held as part of the Step 3 Consultation.

In addition to this, the FLO organised Fisheries Briefings with local fishers to coincide with the public information events. There were 43 attendees at the fisheries briefings held in Youghal, Kilmore Quay, An Rinn, Ballycotton, Dunmore East and Crosshaven. In the case where individuals were unable to attend these briefings, the FLO endeavoured to follow up with a phone call or arrange for information to be shared in another manner. The Fisheries Briefings took place on:

- Tuesday 19 November, 6pm-8pm: Regal Cinema, Youghal, Cork
- Monday 25 November, 6pm-8pm: Stella Maris Centre, Kilmore Quay, Crossfarnoge, Wexford
- Tuesday 26 November, 11am-6pm: Halla Pobal Na Rinne, Maoil an Chóirne, An Rinn, Dún Garbhán, Co Portláirge
- Thursday 28 November, 6pm-8pm: Crosshaven Community Centre, Crosshaven, Cork P43 W968
- Tuesday 03 December, 6pm-8pm: Dunmore East Library, Fishermans Hall, Dock Road, Dunmore East, Waterford
- Thursday 05 December, 6pm-8pm: Ballycotton Community Hall, Ballycotton, Cork P25 HK83

2.3. Consultation Submissions

As part of the public consultation, members of the public were invited to respond to the following questions:

Q1. Please provide any comments you may have on the Landfall Zones being considered (Zones A-G presented in this consultation)

Q2. Please provide any comments you may have on the Grid Connection Zones being considered

Q3. Please provide any further comments you may have in relation to this project

Submissions were accepted via a number of channels, including:

2.3.1. Consultation Portal

Members of the public and stakeholders were invited to provide their feedback via the online consultation portal. The portal also provided detailed information on the projects, the types of technology options, and details of the next steps. The contact information for the Community Liaison Officers, Agricultural Liaison Officer and the Fisheries Liaison Officer was also provided.

2.3.2. Post

Members of the public who had received a hard-copy submission form, or who had drafted their own response, could send them via free post to the following address:

Powering Up Offshore - South Coast Step 3 Consultation
EirGrid plc,
Freepost FDN 5312,
160 Shelbourne Road,
Ballsbridge, Dublin 4,
D04 FW28

2.3.3. Email

Email submissions could be sent to southcoastoffshore@eirgrid.ie and this email address was printed in published and online materials.

3. Analysis of Feedback

The following section provides an overview of all responses and feedback received during the engagement and consultation period. Submissions received via the formal consultation channels were analysed, as well as feedback and queries noted at the public information events, webinars and stakeholder briefings.

3.1. Summary of Consultation Responses and Feedback Received

33 responses were received across the formal consultation channels (portal, email, and written submissions).

Consultation Channel	Number of Responses
Consultation Portal	21
Email	12
Post	0
Total	33

Submissions were provided by the following stakeholders:

Category	Number
Local Residents, Local Business Owners and a Local Community Representative	16
Industry or State Body in Energy or Food Sector	11
Research Body	2
NGO	2
Community Group	1
Local Authority	1
Total	33

In addition to the responses received via the consultation channels, a variety of stakeholders attended and provided feedback during the information days, fisheries briefings and webinars. These included local residents, fishers, and representatives from community groups, industry bodies and developers.

Category	Events	Attendees	Information captured
Webinars	2	153	80+ questions and comments noted

Information Days	8	Approximately 200+	Post event reports compiled by CLOs, including estimated attendance.
Fisheries Briefings	6	43	Fisheries Briefing reports prepared after each event

3.2. Summary of Consultation Responses and Feedback Received – Locations

The responses to questions regarding the location of the Landfall Zones and the Grid Connection Zones are summarised as follows ⁴.

Q1. Please provide any comments you may have on the Landfall Zones being considered (Zones presented in this consultation):

There were submissions made regarding all landfall zones, with Zones A, B and C receiving the highest number of specific responses. While Zone C had the highest number of objections or concerns, there were a few submissions which proposed alternative landfall zones, specifically naming Zones A, B, C and D as options. Some submissions stated that they had no preference for landfall zones while one submission preferred the option that “created the least damage for the least money.”

Observations regarding landfall zones included potential impact on local road users and construction disruptions. Stakeholders in one area/community had concerns following the impact of a recent electrical infrastructure project in the area by a private entity. Specific concerns for Zones C, D, E, F and G were on the potential impact on the landscape, environment and local heritage. One industry representative requested further information regarding landfall zones A, B and C.

Themes presented during public engagement events broadly mirrored those of the consultation submissions and are expanded on in the next section. In addition to general enquiries about the study areas, technology and delivery plan, there were concerns for the impact on the landscape and local disruption. The theme of the impact on the local fishing community was more prevalent during webinar and in-person engagement activities, than what was recorded in consultation submissions. This reflects the event locations and the intentional engagement with local fishers, specifically the fisheries briefings.

Attendees at all information events had feedback about their own local area, and generally did not comment on Zones outside of their area. EirGrid staff recorded locations of fishing infrastructure, homes and businesses, and noted areas where attendees shared specific feedback. This reporting included some specific references to Zones A, B and D. In the webinars, there were questions posed that referenced Zones A, B, C, D and G.

While outside the scope of this consultation, several consultation submissions stated that they were opposed to or had concerns regarding the selection of the Tonn Nua site for offshore renewable energy development. Of these, one submission specifically mentioned Tonn Nua in their concern for Atlantic salmon, while a few submissions had concerns regarding the technical aspect of focusing on Tonn Nua as the first stage of development within the SC-DMAP area. A few responses proposed alternative SC-

⁴ Language qualification for submissions, feedback and questions: A few (2-3), Some (3 – 5), Several (5-10), Many (10+)

DMAP areas. There were also several questions and concerns shared regarding Area A: Tonn Nua during the webinars, and some questions regarding the same during engagement events. These included concerns for the visual impact of wind turbines and their proximity to the shore. There was also feedback regarding the impact on the natural environment, including fishing grounds. Additionally, there were some questions around the process through which Tonn Nua was selected as the first location for development within the SC-DMAP area, and why this area was included in the SC-DMAP.

Q2. Please provide any comments you may have on the Grid Connection Zones being considered:

There were five submissions which provided comments or feedback on the proposed Grid Connection Zones. The concerns for zones AA-OHL02 and AA-OHL03 were around impact on local road users and construction disruptions. AA-OHL03 was suggested in one submission as an alternative to AA-OHL02. Four submissions stated that they had no preference, issues or objections with these proposed zones.

While the majority of locations mentioned in engagement activities referred to Landfall Zones, concerns shared during webinars and information events regarding disruption and road reinstatement during cabling works are also relevant to the Grid Connection Zones. There were additional concerns regarding this in areas that had been affected by recent infrastructure projects.

3.3. Summary of Themes

The key concerns communicated across both the consultation submissions and engagement activity feedback related to potential environmental impacts; economic impact of the project on the fishing and tourism industries; and the proximity of the windfarms in Area A: Tonn Nua to the shore.

A number of submissions included comments or statements of support on the importance of developing renewable energy infrastructure generally. Other submissions stated support for the public engagement process as part of its broader feedback.

Theme	Detail of Contributions
Environmental Impact	<p>Some submissions were concerned about the environmental impact caused by the project delivery and subsequent offshore development, including risk to seabirds and migrating landbirds, wildlife and the effect of noise on marine mammals. There were also environmental concerns regarding the impact on the natural landscape. These included concerns regarding the designations of the Copper Coast UNESCO Global Geopark and the SAC (Special Area of Conservation).</p> <p>Some submissions included requests for further environmental analysis.</p> <p>Some submissions were concerned about the environmental impact of geophysical surveys, including the impact of acoustic equipment on marine mammals and the effect on herring spawning grounds.</p>
Impact on Fisheries	<p>There were several concerns in submissions regarding the environmental impact arising from the offshore development on fisheries and aquaculture activities. This included impact on the seabed and spawning grounds.</p> <p>There was concern in some submissions for fish migration, specifically about the impact on herring, cod and Atlantic salmon, as well as crustaceans and shrimp.</p>

	<p>There were questions during engagement activities regarding compensation to fisheries and fishing communities.</p>
Location	<p>There were questions and comments regarding the selection of landfall and grid connection zones.</p> <p>There were questions regarding the selection of Area A: Tonn Nua, with concerns regarding this selection.</p> <p>Two public bodies involved in delivering utilities made submissions with concerns regarding the congestion of infrastructure in the proposed project areas.</p>
Impact on Tourism and Amenities	<p>A number of submissions included a concern for impact on tourism due to visibility of turbines.</p> <p>Some submissions referred to the impact on local amenities, including wind turbines affecting waves required for surfing.</p>
Local Disruption	<p>There were a number of submissions, questions and feedback regarding the disruption to local communities during the construction process as well as a concern for the impact on roads.</p> <p>Some of these submissions and feedback shared a concern about the impact on communities who had experienced a lot of disruption due to a recent similar infrastructure project in one of the potential zones.</p>
Proximity/Visual Impact	<p>Many submissions were concerned about visual impact and the proximity of wind turbines to the shore. There was also a concern about how the visual impact would affect tourism and visual amenity. Some of these submissions specifically mentioned the proximity of Tonn Nua.</p> <p>Some submissions were additionally concerned about the visual impact of onshore infrastructure.</p> <p>There were questions about what the turbines will look like.</p>
Engagement and Communications Process	<p>There were a number of submissions regarding the engagement and communications process. One submission asked why a local newspaper was not used, as they felt there was not enough local publicity.</p> <p>There was a request for clear reporting on the consultation, including the next steps and how information gathered will inform decision making. One submission requested that local representation be part of the community forum.</p> <p>A number of submissions included requests for ongoing engagement in the future, including one local authority.</p>
Project Delivery	<p>There were questions regarding the SC-DMAP process and the next steps in project development.</p> <p>There was a concern for the impact on public finances if windfarms become insolvent.</p> <p>Some submissions included the provision of mapping and academic research data to inform the project.</p>
Climate and Renewable Energy	<p>A number of submissions voiced their support for this project from the perspective of developing renewable energy in Ireland. Two of these submissions</p>

	<p>specifically named climate change as a strong concern and reason to develop renewable energy.</p>
<p>Technology and Energy Infrastructure</p>	<p>There were some comments or questions that referred to the technology, including the design of platforms, substation technologies, energy generation capacities and future developments. Some local residents provided information on potential alternative technology and delivery methods.</p> <p>There were questions regarding the broader grid infrastructure landscape, including the sale of power generated by future windfarms.</p> <p>There was a question regarding the future proofing of infrastructure to accommodate future grid development, so as to reduce local disruption.</p> <p>There were questions around the improvement of local grid infrastructure, and potential local benefits.</p>

4. Step 3 Consultation and Engagement Outcomes

The aim of this public consultation was to provide opportunities for the public, community groups, businesses, fishers, and other bodies to engage with the EirGrid project team and provide insight and feedback regarding the Powering Up Offshore - South Coast project.

The presence of the cross-functional team at public information events proved successful in ensuring that technical queries could be immediately addressed and that the technical team could receive this feedback directly from the public. It was noted in the feedback from information events that some landowners who had received information and visits from the Agricultural Liaison Officer had subsequently attended information events to further engage in the process.

It was particularly important for the consultation to engage with local fishers, both on a community and industry level. While representatives of the fishing industry attended webinars, information events, briefings and made formal submissions, the EirGrid FLO continues to build relationships and identify opportunities for ongoing and future communication and engagement with local fishers.

A broad variety of concerns were raised in the consultation submissions and at engagement events. Concerns from local fishers often related to the economic impact of the project on the fishing industry, both through disruption to business, and the potential impact on fish spawning sites. There was also a concern regarding the material impact of infrastructure developments on the seabed, coastal landscape and roads network.

Local residents shared that construction could impact travel and local amenities, and that there was anxiety in some communities that had been recently impacted by an infrastructure development unrelated to EirGrid. The impact of windfarms and turbines on tourism was also a concern with local residents, including the visual impact on the landscape as well as the potential impact of turbines on waves that attract surfing tourism.

In addition to concerns raised, there were a number of submissions that supported the development of Ireland's renewable energy infrastructure, and in some cases asked for a faster delivery process due to climate concerns. It was notable in the consultation submissions that some local residents who objected to this project, specifically due to the Area A: Tonn Nua location, also voiced their support for offshore renewable energy development in general.

Some submissions and responses related to policy, processes and geographical aspects of the development of offshore wind infrastructure outside the scope of the consultation. However, this feedback was also analysed and included in the report as it supported a general understanding of local sentiment and sensitivities and will inform how to work with and build relationships with these communities.

The conclusion of Step 3 includes the publishing of relevant documents on the Powering Up Offshore - South Coast project webpage⁵ including this Step 3 Engagement and Consultation Report.

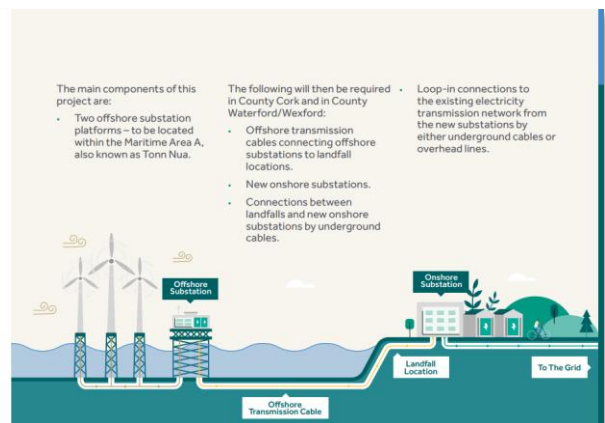
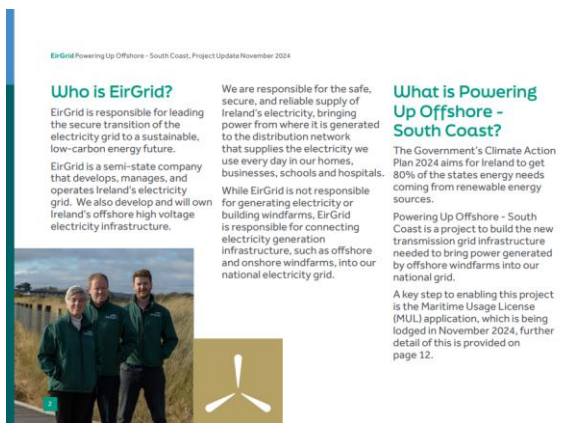
⁵ [Link to Powering Up Offshore South Coast webpage](http://www.eirgrid.ie/offshore): www.eirgrid.ie/offshore

Appendices



Appendix A: Designed Materials and Printed Collateral

Information Leaflet distributed during public engagement activities and downloadable from project webpage.



South Coast Designated Maritime Area Plan (SC-DMAP)

In October this year, the SC-DMAP was approved by the Oireachtas. The SC-DMAP represents a spatial government led approach for the development of offshore wind farms.

The SC-DMAP includes four proposed areas for future offshore wind development. The first area off the south coast that will host offshore wind farm development is area A, Tonn Nua. This will help deliver approximately 900 megawatts of additional electricity – enough to power almost one million homes with clean energy.

Tipperary, Kilkenny, Wexford, Rosslare, Waterford, Dungarvan, Youghal, Tramore, A: Tonn Nua, B: Li Ban, C: Manannán, D: Danu

What is happening now?

The development of this project follows EirGrid's 6-Step approach to Grid Development (see below) which sets out the steps to be taken to identify and implement the best performing solution for the development of the electricity transmission grid.

Step 1 How do we identify needs of the electricity grid?
Step 2 What technologies can meet these needs?
Step 3 What's the best option and what area may be affected?
Step 4 Where exactly should we build?
Step 5 Apply for planning permission.
Step 6 Construct, energise (make live), and share benefits.

Have Your Say

EirGrid is now consulting on the the Emerging Best Performing Options shown for Landfall Zones and Grid Connection Zones.

Your input, local knowledge and ideas for this development are important to us.

The public consultation will take place from Tuesday 12th November 2024 to Friday 24th January 2025 and we want to hear your thoughts and suggestions.

You can get involved in the future of energy generation and provide feedback in a range of ways:

You can make a submission via EirGrid's consultation portal here: <https://consult.eirgrid.ie/en/consultation/powering-up-offshore-south-coast-step-3-consultation> or Email your submissions to southcoastoffshore@eirgrid.ie or Submit your response in hard copy via free post to the following address:

Powering Up Offshore - South Coast Step 3 Consultation, EirGrid plc, Freepost FDN 5312, 160 Shelbourne Road, Ballsbridge, Dublin 4 D04 FW28

Information Events

During and following this public consultation, EirGrid's Community, Agricultural and Fisheries Liaison Officers will engage with communities, landowners and the maritime community across the project study area.

EirGrid is a member of the Offshore Renewable Energy (ORE) Seafood Working Group, which was established by Government to facilitate discussion on matters arising from the interaction of the seafood and offshore renewable energy industries. We are committed to adhering to the principles for engagement as agreed by the Working Group.

Throughout the consultation, we are holding a series of public information events and online webinars.

This will provide an opportunity for us to share information with you and for you to speak to members of the project team about the project and ask any questions you may have before you submit your views.

If you would prefer to receive any information relating to the consultation through the post, or you need it in another format, please get in touch.

If you have any difficulty writing down your feedback, a member of the Public Engagement team will be able to take comments in person or over the phone.

Information Events

Location	Date	Time
Garryvoe Hotel, Garryvoe, Ballylongane, East, Co. Cork, P25 DR94	Tue 19 Nov	11am-6pm
Copper Coast UNESCO Global Geopark, Ballynasissala, Bunmahon, Co. Waterford, X42 T92	Wed 20 Nov	11am-6pm
St Mary's Community Hall, St. Mary's Community Hall, Fethard, Co. Wexford, Y34 HH58	Thu 21 Nov	11am-6pm
Halla Pobal Na Rinne, Maolán Chóirne, An Rinn, Dún Garbhan, Co. Portlárge X55 XW29	Tue 26 Nov	11am-6pm
Aghada and District Community Centre, Aghada, Co. Cork P25 CS76	Wed 27 Nov	11am-6pm
Carrig On Bannow Community Centre, Danescastle, Co. Wexford Y35 WF86	Tue 03 Dec	11am-6pm
Coastguard Cultural Centre, Doneraile Dr, Tramore West, Tramore, Co. Waterford, X91 HP63	Wed 04 Dec	11am-6pm
Churchtown South Community Hall, Ballycatoo, Cloyne, Co. Cork P25 AX24	Thu 05 Dec	11am-6pm

Online Webinars

Zoom Webinar	Thu 28 Nov	7pm-8pm
Zoom Webinar	Mon 13 Jan	7pm-8pm

Maritime Usage Licence Application

EirGrid has also applied for a Maritime Usage Licence Application to explore the suitability of the marine areas under consideration as part of this project. The MUL is a critical step for this project, enabling us to undertake surveys within the maritime area. Should the application for a MUL be successful, EirGrid will actively engage with local stakeholders, including fishing communities, representatives from the Seafood & Offshore Renewable Energy Working Group and local councils, providing regular updates on the MUL licensing activities. Further details of this MUL application are available on the Maritime Area Regulatory Authority (MARA) website.

Project Overview

Project requirements in County Cork and in County Waterford/Wexford, will include:

- Landfall locations
- New onshore substations
- Connections between landfalls and new onshore substations by underground cables
- Loop-in connections to the existing electricity transmission network from the new substations by either underground cables or overhead lines.

This infrastructure will be located within the infrastructure zones, illustrated in this map, in Cork and Waterford/Wexford.

The Step 3 Report which provides the project details can be found at www.eirgrid.ie/offshore.

Tipperary, Kilkenny, Wexford, Rosslare, Waterford, Dungarvan, Youghal, Tramore, A: Tonn Nua

Project Overview Map

Legend

- Infrastructure Zones
- Maritime Usage Licence Application
- Powerline Grid Connection Zones
- Existing Substations
- Grid Interconnection Connection Station
- Landfall Locations under consideration (R-C)
- Landfall Locations under consideration (D)
- Landfall Locations under consideration (E-G)



What is a Landfall Zone?
A Landfall Zone is where the offshore transmission cable will come ashore and connect to the land cable. Two landfall locations from the short list below are required: one in County Cork (A, B or C) and one in County Waterford/Wexford (D, E, F or G).
At each Landfall Zone, underground Onshore Transition Joint Bays (TJBs) will connect the offshore cable to the onshore underground cable (UGC). The TJB is placed underground and is made up of a single concrete chamber for cable joints, and communication connectors. Once the work is completed the area will be fully reinstated.

Landfall Zones Options

Zone	County	Location
A	Cork	Located within the townlands of Ballintra East, Inch, and Lahard.
B	Cork	Located in the townlands of Ballybragan, Ballycreeen West, Ballyrobin South and Ballycreeen East.
C	Cork	Located within the townlands of Garryvoe Lower, Ballybutler and Ballycreeen.
D	Waterford	Located within the townlands of Knockmahon, Templeyrvick, Ballyneissala and Ballynagliga.
E	Wexford	Located within the townlands of Ramstown.
F	Wexford	Located within the townlands of Bannow.
G	Wexford	Located within the townlands of Blackhall, Haggard, Ballymadder, Loftusacre.

What is a Grid Connection Zone?
These Grid Connection Zones are the proposed locations for the siting of new substations. The electricity coming from the offshore wind generation will connect into these new substations which will then connect into the national electricity network.
The areas of focus for Grid Connection Zones are located in proximity to:
- The existing Aghada 220 kV Substation and Aghada-Knockraha double overhead line in County Cork.
- The IDA site at Ballyadam, County Cork.
- Existing Great Island 220 kV Substation, Great Island-Kellis and Great Island-Lodgewood 220kV Overhead Lines in County Wexford.

Community Forum
Community Forums are an important part of all EirGrid projects. The purpose of the Forum is to make sure that the voices of local communities, and those impacted most by our infrastructure, are listened to. The forums provide for open dialogue between the project team and stakeholders interested in the project.
EirGrid will establish a Community Forum for Powering Up Offshore - South Coast to help us to engage meaningfully on key project developments such as:
- how we communicate and engage with impacted communities;
- what we need to consider in developing the project; and
- how we can deliver meaningful community benefit to the area where our infrastructure is hosted.
The Community Forum will be chaired by an independent facilitator and will act as a consultative body; this will not replace any other engagement and consultation that EirGrid carries out.
To find out more about EirGrid's existing Community Forums please [click here](#).

To express your interest in joining a community forum for this project, please scan the QR code below or visit our website to complete the Expression of Interest form.
To be kept informed of forum activity throughout this grid development, please visit our website at www.eirgrid.ie/offshore.

Community Benefit Fund
EirGrid establishes a community benefit fund on all projects. A Powering Up Offshore - South Coast Community Benefit Fund will be confirmed during Step 4 and 5 of the project and made available in Step 6.
The Community Forum will be integral to the design of the community benefit strategy and will play a key role in helping to identify the needs of the area.

Further Information
If you have any queries, please contact:

Cork
Michelle Walsh
Community Liaison Officer
michelle.walsh@eirgrid.com
085 870 4999

South Coast
Ronan Lynch
Fisheries Liaison Officer
ronan.lynch@eirgrid.com
087 490 4786

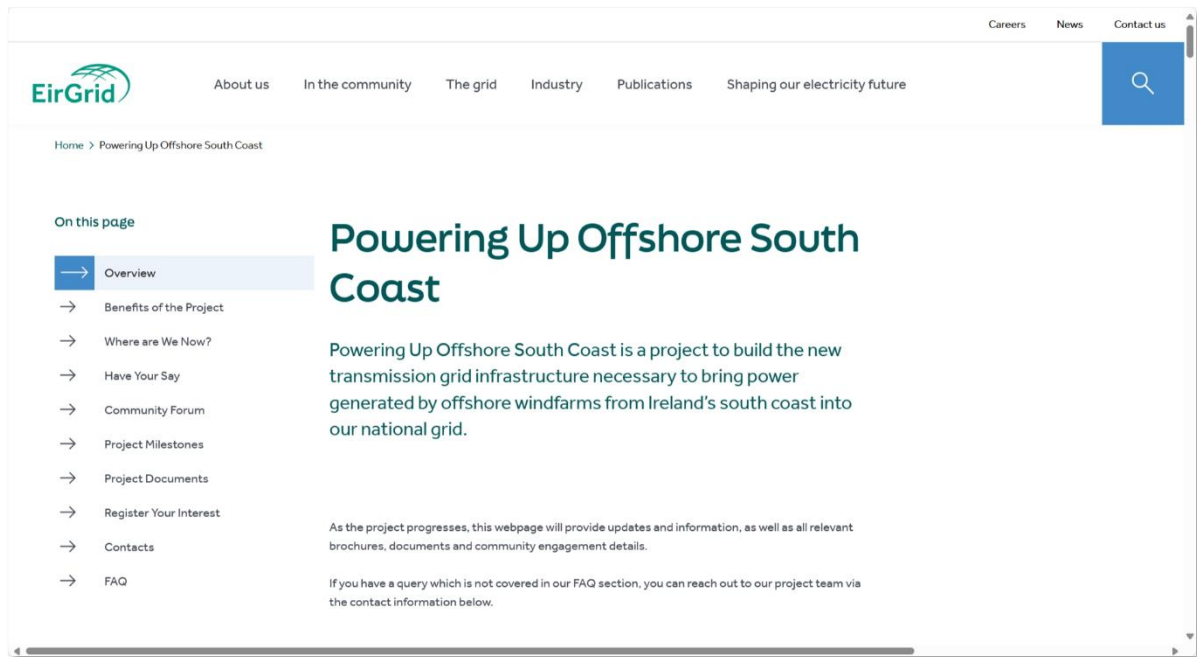
Waterford & Wexford
Eoghan O'Sullivan
Community Liaison Officer
eoghan.osullivan@eirgrid.com
087 247 7732

Sean Kenny
Land Management Unit
sean.kenny@eirgrid.com
085 708 9595

EirGrid
The Oval, 160 Shelbourne Rd,
Dublin, D04 FW28
01 627 1700 | EirGrid.ie

WORLD LAND TRUST
www.worldlandtrust.org

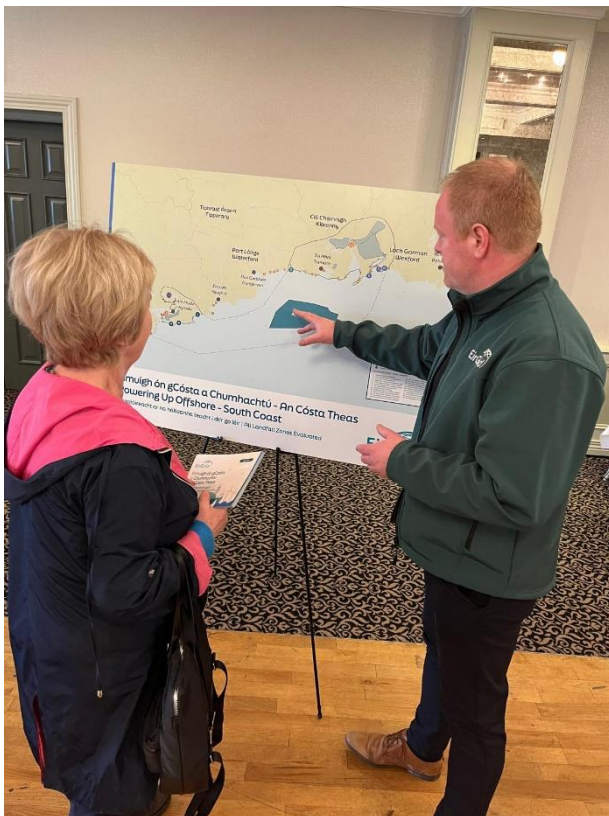
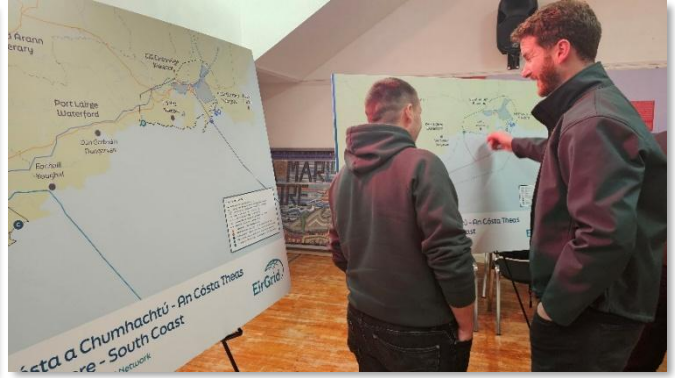
Project Webpage for Powering Up Offshore - South Coast



Have Your Say Video - [Link](#)



Information Events Exhibition Materials and Documentation



Print and Social Media -

Paid and organic features in print and social media, including printed advertisements.

Public consultation events on offshore energy plans for south coast

< All C103 News & Sport

Public consultation events on offshore energy plans for south coast

< All 96FM News & Sport

EirGrid Hosts South Coast Offshore Energy Plans Consultations

by Oliver McBride | Nov 12, 2024 | [Irish Fishing Industry, Latest News](#)

12th November, 2024

Cork Public can voice their opinions on offshore energy plans for south coast

WED, 08 JAN, 2025 - 10:47

Cork public urged to share their thoughts on offshore infrastructure project as deadline approaches

EirGrid commenced a 10-week public consultation in November to hear from people across the south coast regarding proposed on and offshore station locations, landfall locations, and grid connection points which will be required to deliver the project.

Wexford

News Sport Business Lifestyle Wexford & District Enniscorthy New Ross Gorey

Deadline approaching for Eirgrid's public consultation on offshore energy projects near Cork, Waterford and Wexford



EirGrid to host public consultation events across Waterford on offshore energy plans for Ireland's south coast

THANK YOU

M-CO

43 Fitzwilliam place,
Dublin 2,
D02 FY81,
Ireland.

+353 1 887 0630
info@mco.ie



M-CO

mco.ie