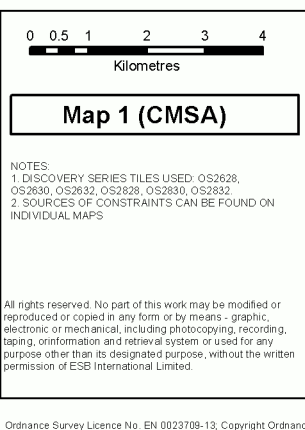


- |  |   |  |
|--|---|--|
| <ul style="list-style-type: none"> <li> Meath Study Area (MSA)</li> <li> Cavan Monaghan Study Area (CMSA)</li> <li> National Heritage Area/Proposed National Heritage Area</li> <li> Scenic Routes</li> <li> Battle of Clontarf Site (1595)</li> <li> Preservation Order</li> <li> National Inventory of Architectural Heritage</li> <li> National Monuments/Scheduled Monuments (NI)</li> <li> Potential National Monument</li> <li> Record of Protected Structures / Listed buildings (NI)</li> <li> Area of Significant Archaeological Interest</li> <li> Industrial Heritage (NI)</li> <li> RMP sites/ SMR sites</li> <li> Architectural Conservation Areas</li> <li> Areas of Special Landscape Interest</li> <li> Breeding Wilder Sites (NI)</li> <li> Forest Park</li> <li> 110kV line (granted not constructed)</li> <li> Railway</li> <li> Area of Primary Amenity Value</li> </ul> | <ul style="list-style-type: none"> <li> Area of Secondary Amenity Value</li> <li> Lakeside Amenity Area</li> <li> Swan Flight Lines 2008/09</li> <li> Swan Flight Lines 2009/10</li> <li> Swan Flight Lines 2010/11</li> <li> Historical Swan site</li> <li> Swan site recorded in Winter Survey period 1: 2007/2008</li> <li> Swan site recorded in Winter Survey period 2: 2008/2009</li> <li> Swan site recorded in Winter Survey period 3: 2009/2010</li> <li> Swan site recorded in Winter Survey period 4: 2010/2011</li> </ul> | <ul style="list-style-type: none"> <li> Major river</li> <li> Existing Paths and Cycle Routes</li> <li> Monaghan Way</li> <li> 110kV line</li> <li> 220kV line</li> <li> 275kV line</li> <li> 38kV line</li> <li> National Road</li> <li> Gas Pipeline</li> <li> Windfarm</li> <li> Gas Stations</li> <li> Electricity Station</li> <li> Urban areas</li> <li> Area of Special Scientific Interest (NI)</li> <li> Green Belt region</li> <li> Site of Local Nature Conservation Importance (NI)</li> <li> Scenic Viewpoint</li> <li> Discernible Sensitive Ecological Receptors</li> <li> Geological Interest Site (surveyed by GSI)</li> <li> Geological Interest Site (identified by GSI)</li> </ul> |
|--|---|--|



Client:

**Project:**  
North-South 400 kV  
Interconnection Development

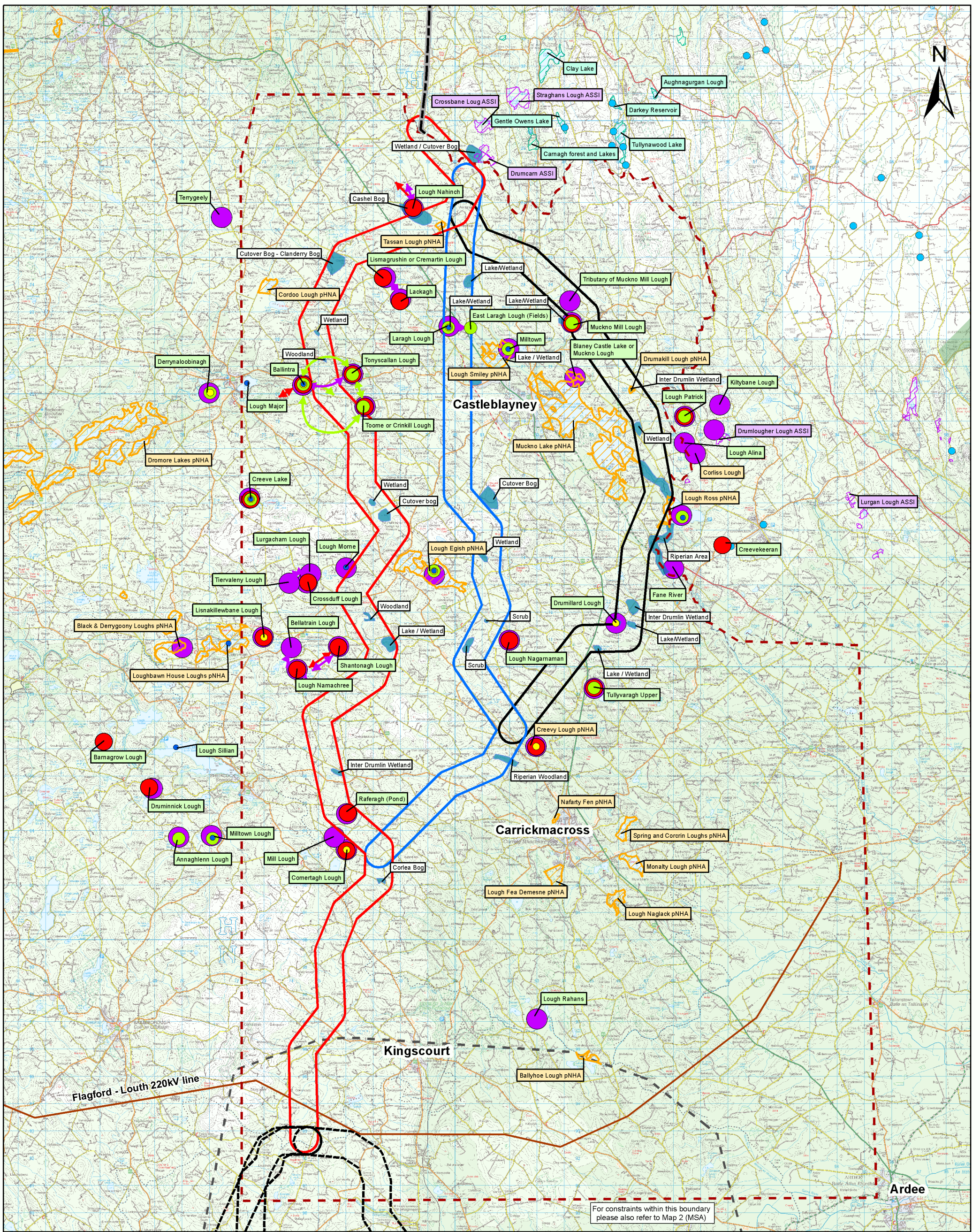
**Title:**  
Constraints within the CMSA.

DRAWN	CHECKED	APPROVED	APPD DATE
C.C	K.C	S.McL	April-11
CLIENT REF	No. of Sheets	SIZE	SCALE
	1 of 1	A3	1:130,000
DRAWING NUMBER		SHEET	REV
PE687-D141-068-001-000			

**ESB International**  
ESBI Energy Innovation

ESBI Engineering Solutions, Stephen Court, 18-21 St. Stephen's Green, Dublin 2, Ireland. Tel: +353 (0)1 703 8000 Fax: +353 (0)1 703 7186  
Email: marketing@esbie.ie Web: www.esbie.ie

ESBI Engineering Solutions is a trading name of ESBI Engineering & Facility Management Limited.  
Registered Office: as above Registered in Ireland No. 155249



	Cavan Monaghan Study Area (CMSA)		Swan Flight Lines 2010/2011
	Route Corridor A		Historical Swan Site
	Route Corridor B		Swan site recorded in Winter Survey Period 1: 2007/2008
	Route Corridor C		Swan Site recorded in Winter Survey Period 2: 2008/2009
	Natural Heritage Area/ Proposed Natural Heritage Area		Swan Site recorded in Winter Survey Period 3: 2009/2010
	Site of Local Nature Conservation Importance (NI)		Swan Sites recorded in Winter Survey Period 4 : 2010/2011
	Area of Special Scientific Interest (NI)		Route Corridors 1/2/3A and 3B
	Green Belt region (NI)		Meath Study Area (MSA)
	Discernible Sensitive Ecological Receptors		NIE line route, application 0/2009/0792/F
	Breeding Wader Sites (NI)		
	Swan Flight Lines 2008/09		
	Swan Flight Lines 2009/10		

0 0.5 1 2 3 4  
Kilometres

**Map 2 (CMSA)**

NOTES:  
1. DISCOVERY SERIES TILES USED: OS2628, OS2630, OS2632, OS2628, OS2630, OS2632  
2. DESIGNATED CONSERVATION AREAS SOURCED FROM NPWS (ROI) AND AECOM (NI)  
3. WHOOPER SWAN DATABASED ON SITE SURVEYS

All rights reserved. No part of this work may be modified or reproduced or copied in any form or by means - graphic, electronic or mechanical, including photocopying, recording, taping, or information and retrieval system or used for any purpose other than its designated purpose, without the written permission of ESB International Limited.

Client:

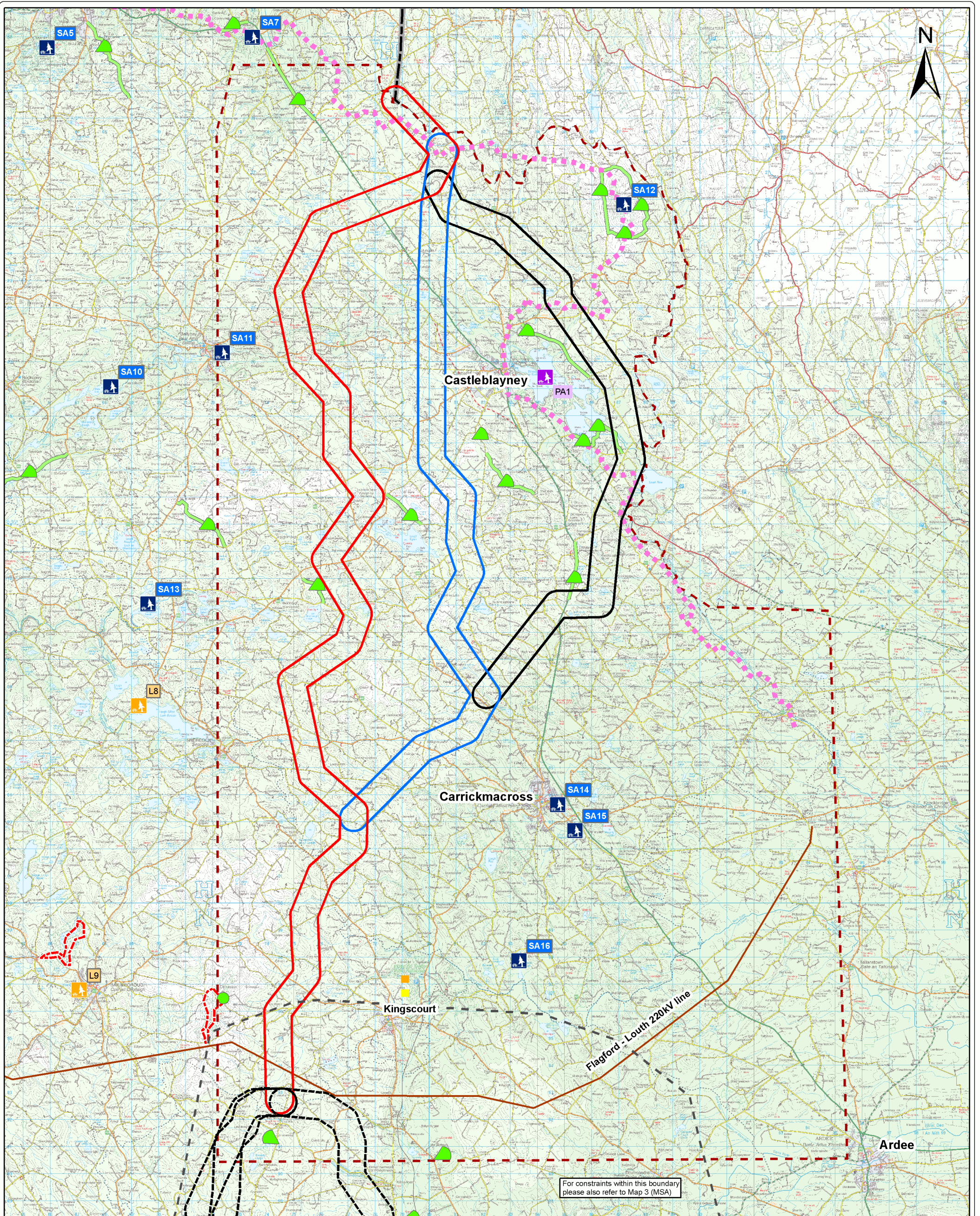
Project: North-South 400 kV Interconnection Development

Title: Route Corridor Options for the CMSA with the Ecological Constraints of the area

DRAWN <b>C.C</b>	CHECKED <b>K.C</b>	APPROVED <b>S.McL</b>	APPD DATE <b>April-11</b>
CLIENT REF		No. of Sheets <b>1 of 1</b>	SIZE <b>A3</b>
DRAWING NUMBER <b>PE687-D141-060-001-000</b>		SHEET	REV

**ESB International**  
ESBI Energy Innovation

ESBI Engineering Solutions, Stephen Court, 18-21 St. Stephen's Green, Dublin 2, Ireland. Tel: +353 (0)1 703 8000 Fax: +353 (0)1 703 7186  
Email: marketing@esbie.ie Web: www.esbie.ie  
ESBI Engineering Solutions is a trading name of ESB Engineering & Facility Management Limited.  
Registered Office: as above Registered in Ireland No. 155249



Cavan Monaghan Study Area (CMSA)	Forest Park
Route Corridor A	Areas of Special Landscape Interest
Route Corridor B	Monaghan Way
Route Corridor C	Scenic Routes
Area of Secondary Amenity Value	Existing Paths and Cycle Routes
Lakeside Amenity Area	Scenic Viewpoints
Area of Primary Amenity Value	Meath Study Area (MSA)
	Route Corridors 1/2/3A and 3B
	NIE line route, application O/2009/0792/F

0 0.5 1 2 3 4  
Kilometres

**Map 3 (CMSA)**

NOTES:  
1. DISCOVERY SERIES TILES USED: OS2628, OS2630, OS2632, OS2629, OS2630, OS2633  
2. LANDSCAPE DATA SOURCED FROM COUNTY DEVELOPMENT PLANS

All rights reserved. No part of this work may be modified or reproduced or copied in any form or by means - graphic, electronic or mechanical, including photocopying, recording, taping, or information and retrieval system or used for any purpose other than its designated purpose, without the written permission of ESB International Limited.

Client:

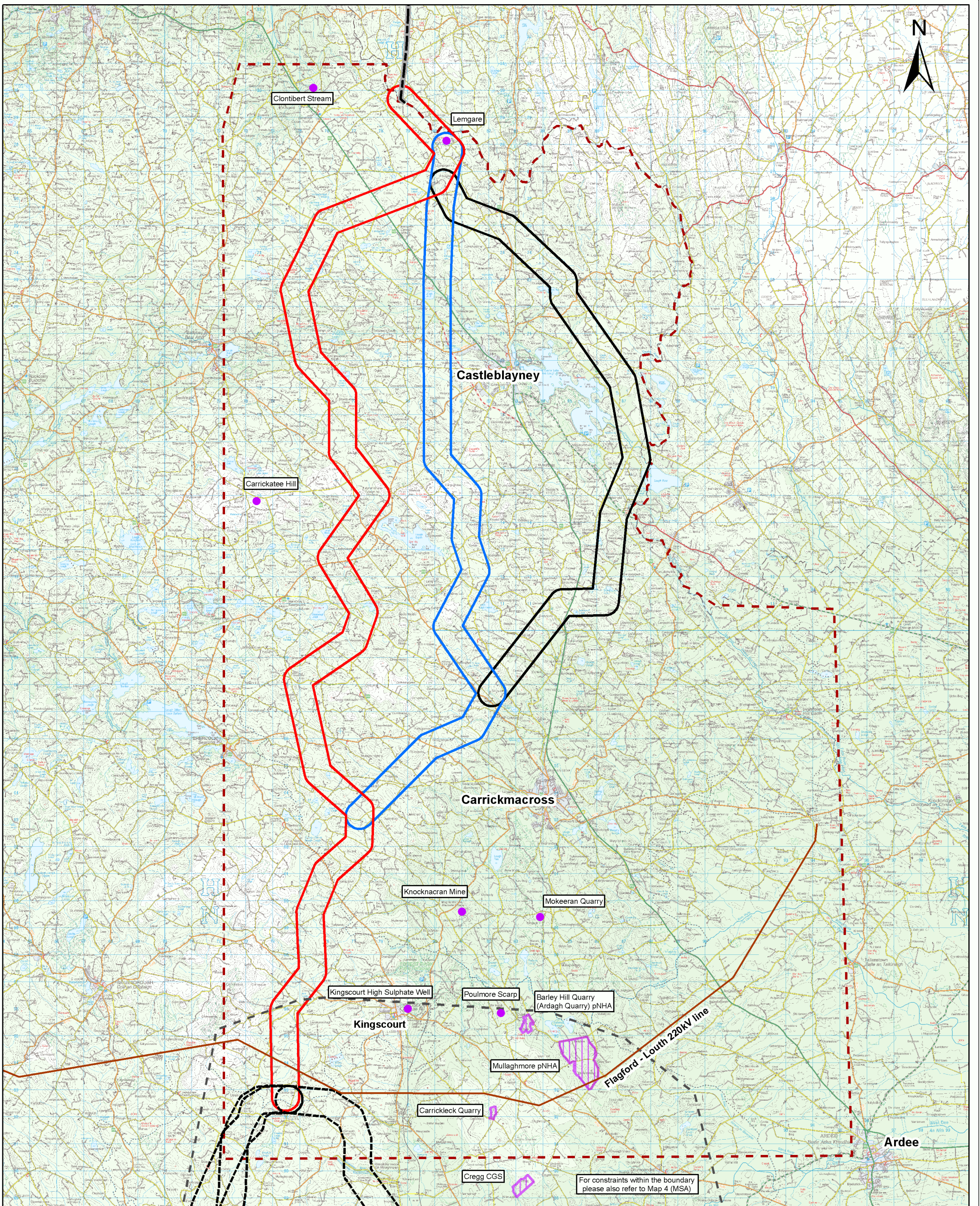
Project:  
North-South 400 kV Interconnection Development

Title:  
Route Corridor Options for the CMSA with the Landscape constraints of the area

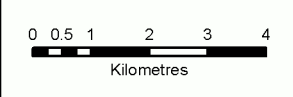
DRAWN <b>C.C</b>	CHECKED <b>K.C</b>	APPROVED <b>S.McL</b>	APPD DATE <b>April-11</b>
CLIENT REF		No. of Sheets <b>1 of 1</b>	SCALE <b>1:130,000</b>
DRAWING NUMBER <b>PE687-D141-061-001-000</b>		SHEET	REV

**ESBI Energy Innovation**

ESBI Engineering Solutions, Stephen Court, 18-21 St. Stephen's Green, Dublin 2, Ireland. Tel: +353 (0)1 703 8000 Fax: +353 (0)1 703 7186 Email: marketing@esbi.ie Web: www.esbi.ie  
ESBI Engineering Solutions is a trading name of ESBI Engineering & Facility Management Limited. Registered Office: as above Registered in Ireland No. 152249



- Cavan Monaghan Study Area (CMSA)
- Route Corridor A
- Route Corridor B
- Route Corridor C
- Geological Interest Site (identified by GSI)
- Geological Interest Site (surveyed by GSI)
- Meath Study Area (MSA)
- Route Corridors 1/2/3A and 3B
- NIE line route, application O/2009/0792/F



**Map 4 (CMSA)**

NOTES  
 1. DISCOVERY SERIES TILES USED: OS2628, OS2630, OS2632, OS2634, OS2636, OS2638, OS2640, OS2642  
 2. GEOLOGICAL DATA SOURCED FROM GSI

All rights reserved. No part of this work may be modified or reproduced or copied in any form or by means - graphic, electronic or mechanical, including photocopying, recording, taping, or information and retrieval system or used for any purpose other than its designated purpose, without the written permission of ESB International Limited.



**Project:**  
 North-South 400 kV Interconnection Development

**Title:**  
 Route Corridor Options for the CMSA with the Geology Constraints of the area

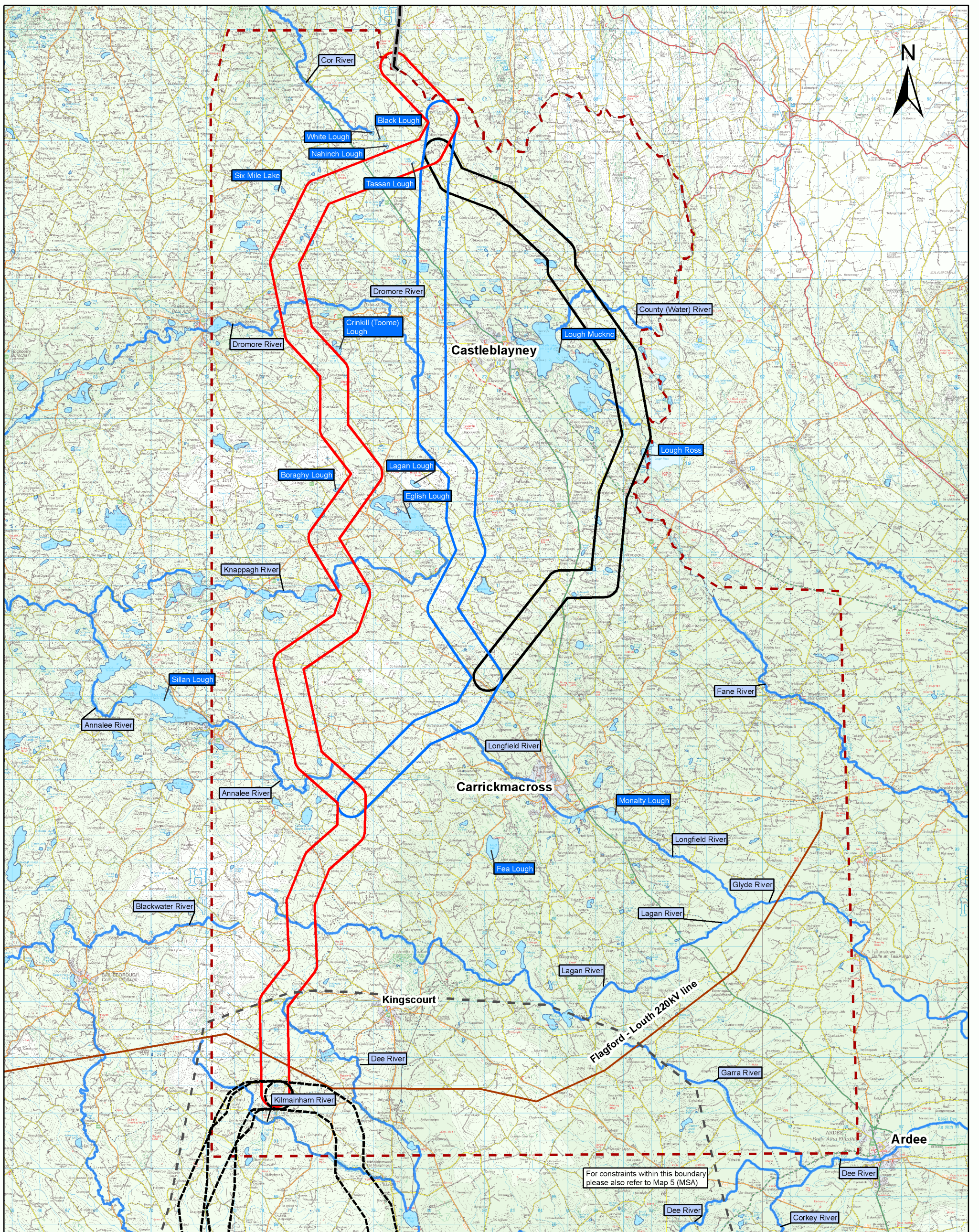
DRAWN <b>C.C</b>	CHECKED <b>K.C</b>	APPROVED <b>S.McL</b>	APPD DATE <b>April-11</b>
CLIENT REF		No. of Sheets <b>1 of 1</b>	SCALE <b>1:130,000</b>




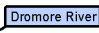






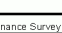
DRAWING NUMBER <b>PE687-D141-062-001-000</b>	SHEET <b>1</b>	REV
---	-------------------	-----

**ESB International**  
 ESB Energy Innovation

ESB Engineering Solutions, Stephen Court, 18-21 St. Stephen's Green, Dublin 2, Ireland. Tel: +353 (0)1 703 8000 Fax: +353 (0)1 703 7186 Email: marketing@esbie.ie Web: www.esbie.ie

ESB Engineering Solutions is a trading name of ESB Engineering & Facility Management Limited. Registered Office: as above. Registered in Ireland No. 155249



	Cavan Monaghan Study Area (CMSA)		Lough Muckno	Major lake in proximity to the study area
	Route Corridor A		Dromore River	Major river in proximity to the study area
	Route Corridor B			
	Route Corridor C			
	Major River			
	Major Lake / Lough			
	Route Corridors 1/2/3A and 3B			
	Meath Study Area (MSA)			
	NIE line route, application O/2009/0792/F			


0 0.5 1 2 3 4  
Kilometres

**Map 5 (CMSA)**

NOTES:  
1. DISCOVERY SERIES TILES USED: OS2628, OS2630, OS2632, OS2628, OS2630, OS2632

All rights reserved. No part of this work may be modified or reproduced or copied in any form or by means - graphic, electronic or mechanical, including photocopying, recording, taping, or information and retrieval system or used for any purpose other than its designated purpose, without the written permission of ESB International Limited.

**Client:**



**Project:**  
North-South 400 kV Interconnection Development

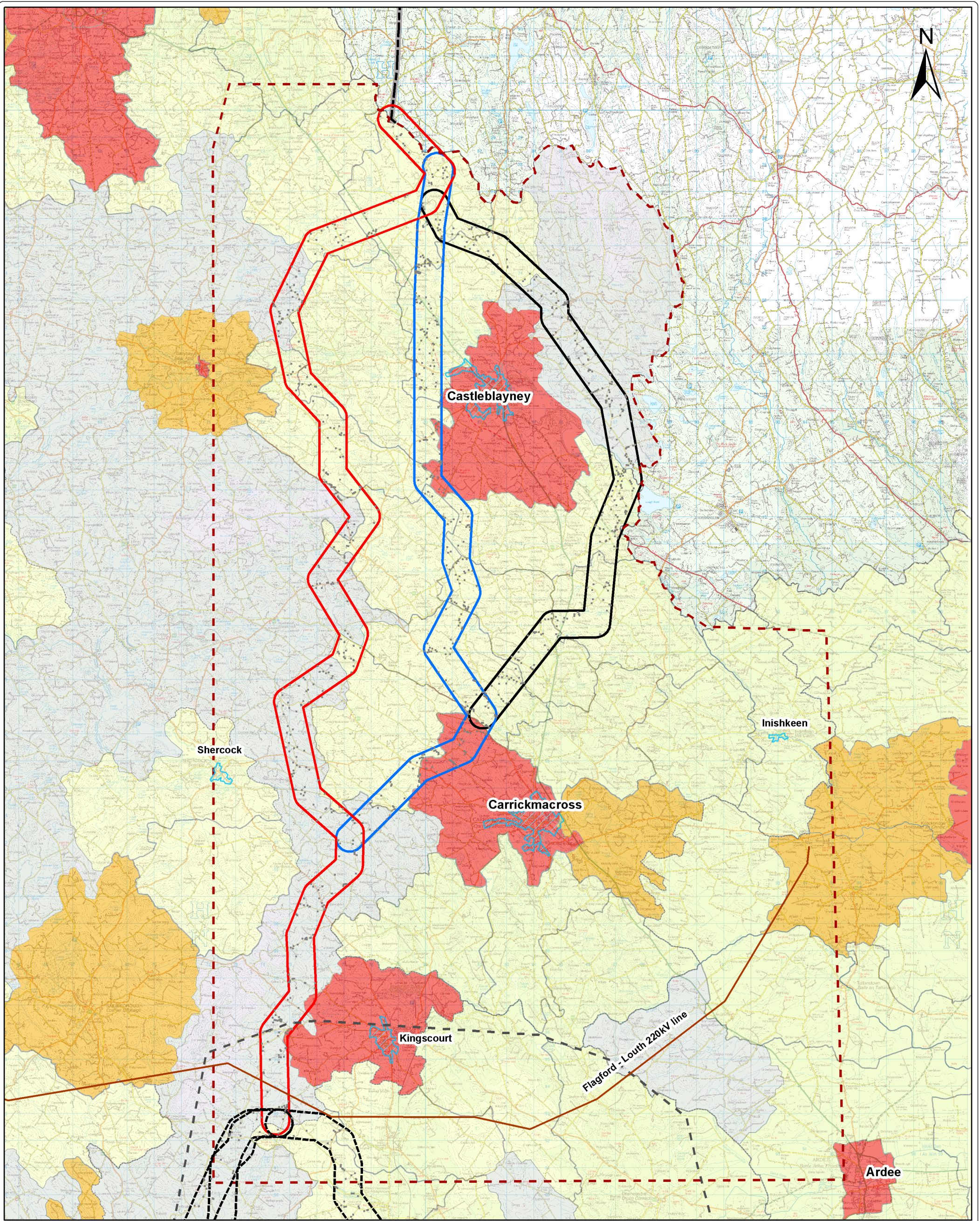
**Title:**  
Route Corridor Options for the CMSA with the Water Constraints of the area

DRAWN <b>C.C</b>	CHECKED <b>K.C</b>	APPROVED <b>S.McL</b>	APPD DATE <b>April-11</b>
CLIENT REF	No. of Sheets <b>1 of 1</b>	SIZE <b>A3</b>	SCALE <b>1:130,000</b>
DRAWING NUMBER <b>PE687-D141-063-001-000</b>		SHEET	REV



**ESB International**  
ESBI Energy Innovation

ESBI Engineering Solutions, Stephen Court, 18-21 St. Stephen's Green, Dublin 2, Ireland. Tel: +353 (0)1 703 8000 Fax: +353 (0)1 703 7186  
Email: marketing@esbi.ie Web: www.esbi.ie  
ESBI Engineering Solutions is a trading name of ESBI Engineering & Facility Management Limited. Registered Office: as above. Registered in Ireland No. 155249



- Cavan Monaghan Study Area (CMSA)
  - Route Corridor A
  - Route Corridor B
  - Route Corridor C
  - Urban areas
  - GeoDirectory Data Jan 2011
  - Route Corridors 1/2/3A and 3B
  - Meath Study Area (MSA)
  - NIE line route, application O/2009/0792/F
- |                              |        |
|------------------------------|--------|
| Persons per square kilometre |        |
|                              | 10<25  |
|                              | 25 <50 |
|                              | 50<100 |
|                              | 100+   |

0 0.5 1 2 3 4  
Kilometres

**Map 6 (CMSA)**

Notes:  
1. DISCOVERY SERIES TILES USED: OS2628, OS2630, OS2632, OS2634, OS2636, OS2638, OS2640, OS2642  
2. POPULATION DENSITY DATA SOURCED FROM CENTRAL STATISTICS OFFICE 2006 DATA AND BASED ON ELECTORIAL DIVISIONS.  
All rights reserved. No part of this work may be modified or reproduced or copied in any form or by means - graphic, electronic or mechanical, including photocopying, recording, taping, or information and retrieval system or used for any purpose other than its designated purpose, without the written permission of ESB International Limited.

**Client:**

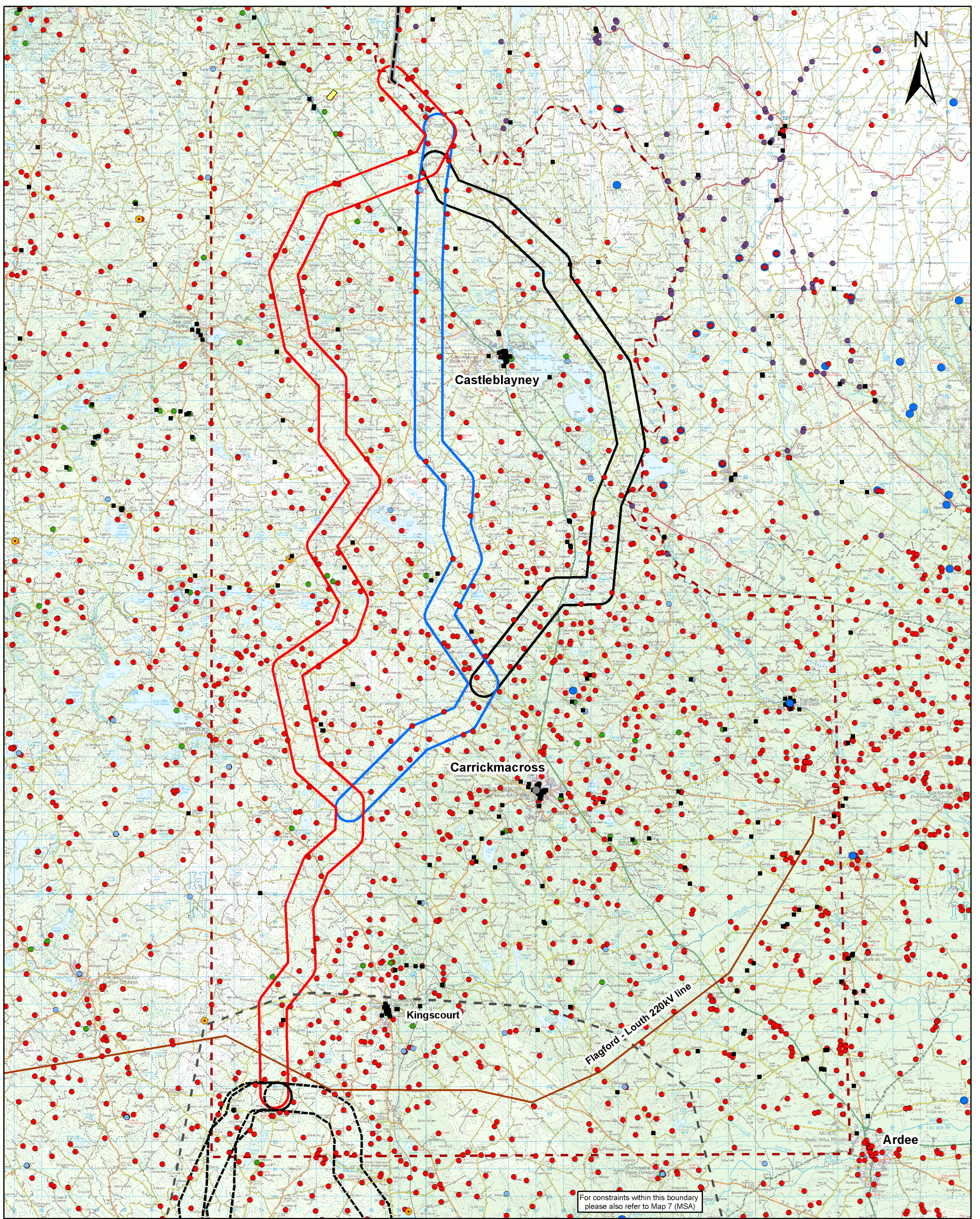
**Project:**  
North-South 400 kV  
Interconnection Development

**Title:**  
Route Corridor Options for  
the CMSA with the Settlement  
Constraints and Population  
Densities of the area

DRAWN <b>C.C</b>	CHECKED <b>K.C</b>	APPROVED <b>SMCL</b>	APPD DATE <b>April-11</b>
CLIENT REF		No. of Sheets <b>1 of 1</b>	SCALE <b>1:130,000</b>
DRAWING NUMBER <b>PE687-D141-064-001-000</b>		SHEET	REV

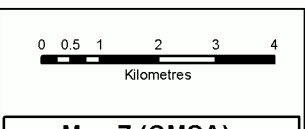
**ESB International**  
ESBI Energy Innovation

ESBI Engineering Solutions, Stephen Court, 18-21 St. Stephen's Green, Dublin 2, Ireland. Tel: +353 (0)1 703 8000 Fax: +353 (0)1 703 7186  
Email: [marketing@esbi.ie](mailto:marketing@esbi.ie) Web: [www.esbi.ie](http://www.esbi.ie)  
ESBI Engineering Solutions is a trading name of ESBI Engineering & Facility Management Limited.  
Registered Office: an abnbn Registered in Ireland No. 155249



For constraints within this boundary please also refer to Map 7 (MSA)

- Cavan Monaghan Study Area (CMSA)
- Route Corridor A
- Route Corridor B
- Route Corridor C
- National Monuments / Scheduled Monuments (NI)
- Architectural Conservation Areas
- Areas of Significant Archaeological Interest (NI)
- Record of Protected Structures / Listed buildings (NI)
- Preservation Orders
- National Inventory of Architectural Heritage
- Potential National Monuments
- Industrial Heritage (NI)
- RMP sites / SMR sites
- Battle of Clontibet Site (1595)
- Meath Study Area (MSA)
- Route Corridors 1/2/3A and 3B
- NIE line route, application O/2009/0792/F



**Map 7 (CMSA)**

NOTES:  
 1. DISCOVERY SERIES TILES USED: OS2628, OS2630, OS2632, OS2626, OS2630, OS2632  
 2. RMP SITES, NATIONAL MONUMENTS, NATIONAL INVENTORY OF ARCHITECTURAL HERITAGE AND PRESERVATION ORDERS ARE ALL SOURCED FROM THE DEPARTMENT OF ENVIRONMENT, HERITAGE AND LOCAL GOVERNMENT  
 3. ARCHITECTURAL CONSERVATION AREAS AND PROTECTED STRUCTURES SOURCED FROM THE COUNTY COUNCILS  
 4. SCHEDULED MONUMENTS, AREAS OF SIGNIFICANT ARCHAEOLOGICAL INTEREST, LISTED BUILDINGS AND INDUSTRIAL HERITAGE SOURCED FROM THE DEPARTMENT OF ENVIRONMENT NORTHERN IRELAND

All rights reserved. No part of this work may be modified or reproduced or copied in any form or by means - graphic, electronic or mechanical, including photocopying, recording, taping, or information and retrieval system or saved for any purpose other than its designated purpose, without the written permission of ESB International Limited.



**Project:**  
North-South 400 kV Interconnection Development

**Title:**  
Route corridor options for the CMSA with the Cultural Heritage Constraints of the area

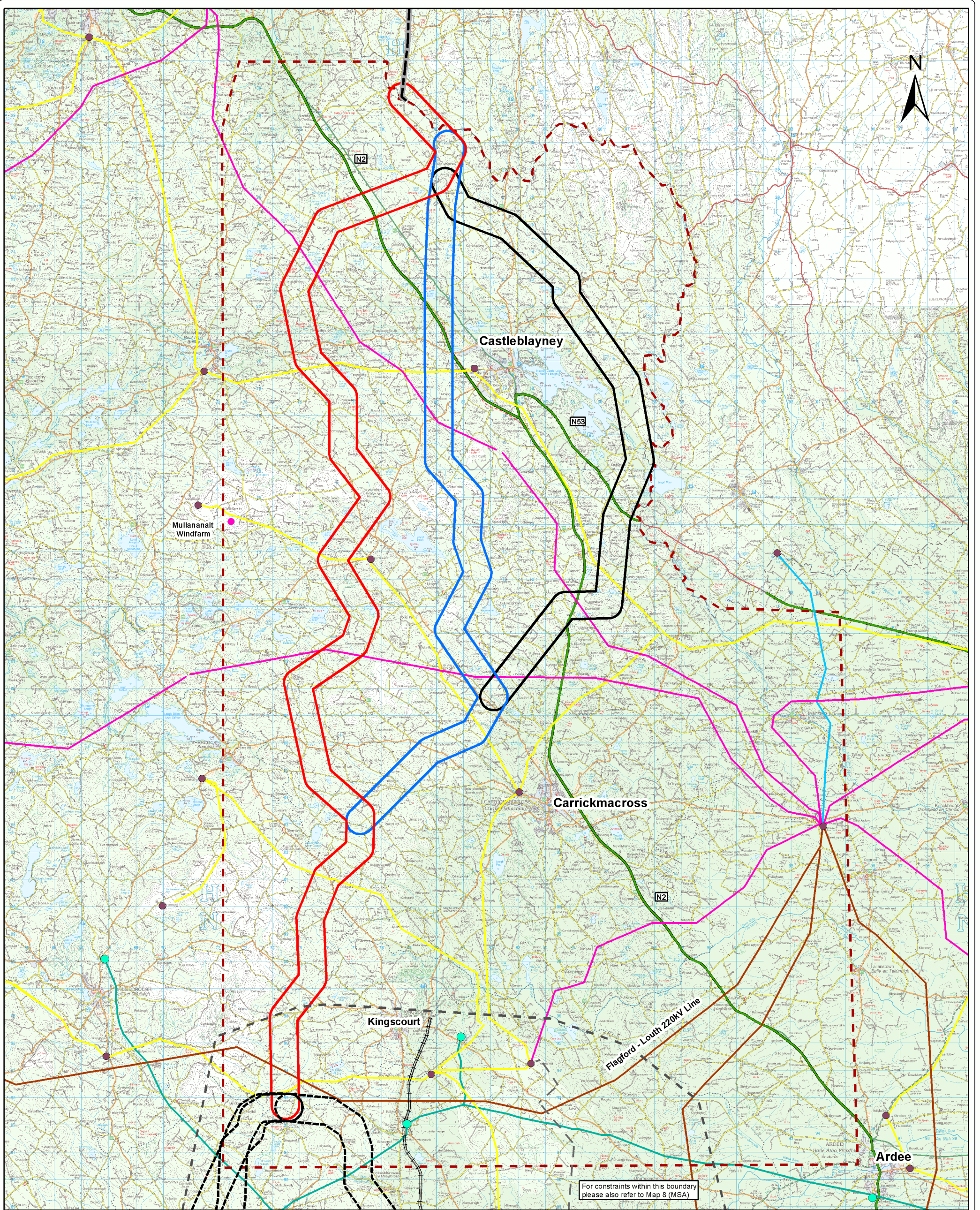
DRAWN <b>C.C</b>	CHECKED <b>K.C</b>	APPROVED <b>SMcL</b>	APPD DATE <b>April-11</b>
CLIENT REF	No. of Sheets <b>1 of 1</b>	SIZE <b>A3</b>	SCALE <b>1:130,000</b>

DRAWING NUMBER <b>PE687-D141-065-001-000</b>	SHEET <b>1</b>	REV
---	-------------------	-----

**ESB International**  
ESBI Energy Innovation

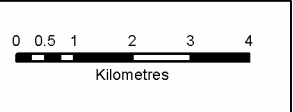
ESBI Engineering Solutions, Stephen Court, 18-21 St. Stephen's Green, Dublin 2, Ireland. Tel: +353 (0)1 703 8000 Fax: +353 (0)1 703 7186 Email: marketing@esbi.ie Web: www.esbi.ie

ESBI Engineering Solutions is a trading name of ESBI Engineering & Facility Management Limited. Registered Office: as above. Registered in Ireland No. 155249



For constraints within this boundary please also refer to Map 8 (MSA)

- |  |                                  |  |  |
|--|----------------------------------|--|--|
|  | Cavan Monaghan Study Area (CMSA) |  | National Road                            |
|  | Route Corridor A                 |  | Railway Track                            |
|  | Route Corridor B                 |  | 110kV line (granted but not constructed) |
|  | Route Corridor C                 |  | Gas Station                              |
|  | 38kV line                        |  | Electricity Station                      |
|  | 110kV line                       |  | Windfarm                                 |
|  | 220kV line                       |  | Meath Study Area (MSA)                   |
|  | 275kV line                       |  | Route Corridors 1/2/3A and 3B            |
|  | Gas pipeline                     |  | NIE route, application O/2009/0792/F     |



**Map 8 (CMSA)**

NOTE:  
 1. DISCOVERY SERIES TILES USED: OS2628, OS2630, OS2632, OS2634, OS2636  
 2. GAS NETWORK SOURCED FROM BORD GÁS  
 3. POWER NETWORK SOURCED FROM ESB NETWORKS  
 4. ROADS SOURCED FROM NRA

All rights reserved. No part of this work may be modified or reproduced or copied in any form or by means - graphic, electronic or mechanical, including photocopying, recording, taping, or information and retrieval system or used for any purpose other than its designated purpose, without the written permission of ESB International Limited.



**Project:**  
North-South 400 kV Interconnection Development

**Title:**  
Route corridor options for the CMSA with the Utilities and Infrastructure Constraints of the area

DRAWN <b>C.C</b>	CHECKED <b>K.C</b>	APPROVED <b>SMcL</b>	APPD DATE <b>April-11</b>
CLIENT REF		No. of Sheets <b>1 of 1</b>	SCALE <b>1:130,000</b>

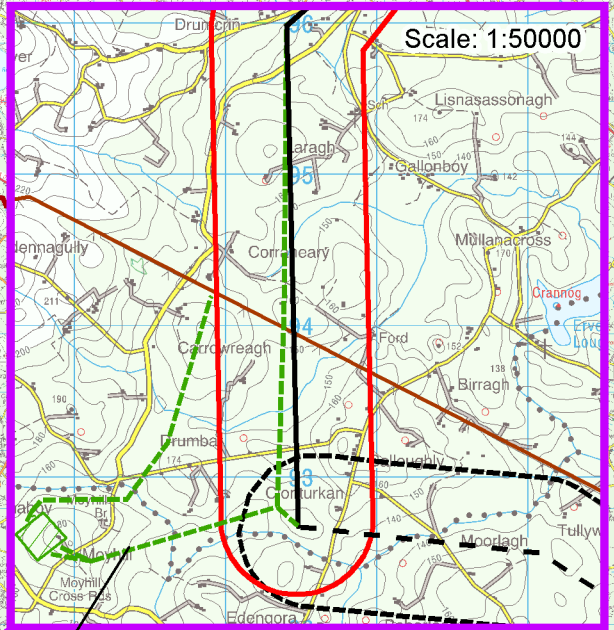
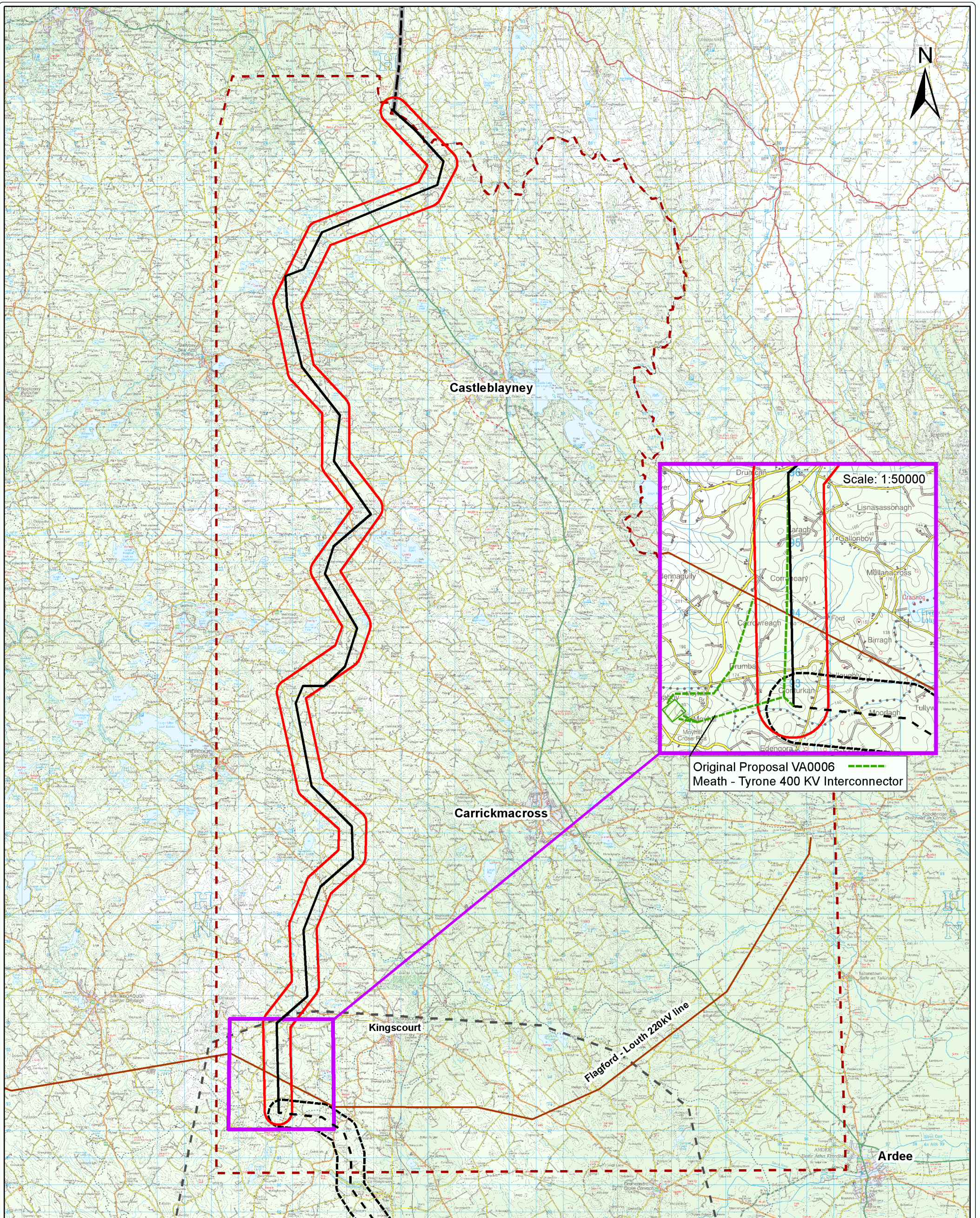
DRAWING NUMBER <b>PE687-D141-066-001-000</b>	SHEET <b>1</b>	REV
---	-------------------	-----

**ESB International**  
ESBI Energy Innovation

ESBI Engineering Solutions, Stephen Court, 18-21 St. Stephen's Green, Dublin 2, Ireland. Tel: +353 (0)1 703 8000 Fax: +353 (0)1 703 7186  
 Email: [marketing@esbi.ie](mailto:marketing@esbi.ie) Web: [www.esbi.ie](http://www.esbi.ie)

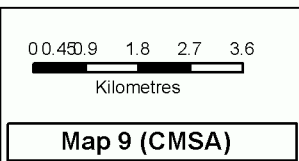
ESBI Engineering Solutions is a trading name of ESBI Engineering & Facility Management Limited. Registered Office: as above. Registered in Ireland No. 165246





Original Proposal VA0006  
Meath - Tyrone 400 KV Interconnector

- Preliminary Indicative line route CMSA
- Cavan Monaghan Study Area (CMSA)
- Route Corridor A
- Preliminary Indicative line route CMSA
- Line Route amended
- Route Corridor 3A
- Meath Study Area (MSA)
- NIE line route, application O/2009/0792/F
- Preliminary Indicative Line Route MSA



Notes:  
1. DISCOVERY SERIES TILES USED: OS2628, OS2630, OS2632, OS2828, OS2830, OS2832

All rights reserved. No part of this work may be modified or reproduced or copied in any form or by means - graphic, electronic or mechanical, including photocopying, recording, taping, or information and retrieval system or used for any purpose other than its designated purpose, without the written permission of ESB International Limited.



**Project:**  
North-South 400 kV Interconnection Development

**Title:**  
Preliminary Indicative Line Route (CMSA)

DRAWN <b>C.C</b>	CHECKED <b>K.C</b>	APPROVED <b>S.McL</b>	APPD DATE <b>April-11</b>
CLIENT REF		No. of Sheets <b>1 of 1</b>	SCALE <b>1:130,000</b>
DRAWING NUMBER <b>PE687-D141-067-001-000</b>		SHEET	REV

**ESB International**  
ESBI Energy Innovation

ESBI Engineering Solutions, Stephen Court, 18-21 St. Stephen's Green, Dublin 2, Ireland. Tel: +353 (0) 1 703 8000 Fax: +353 (0) 1 703 7186  
Email: marketing@esbi.ie Web: www.esbi.ie  
ESBI Engineering Solutions is a trading name of ESB Engineering & Facility Management Limited.  
Registered Office: as above Registered in Ireland No. 156249