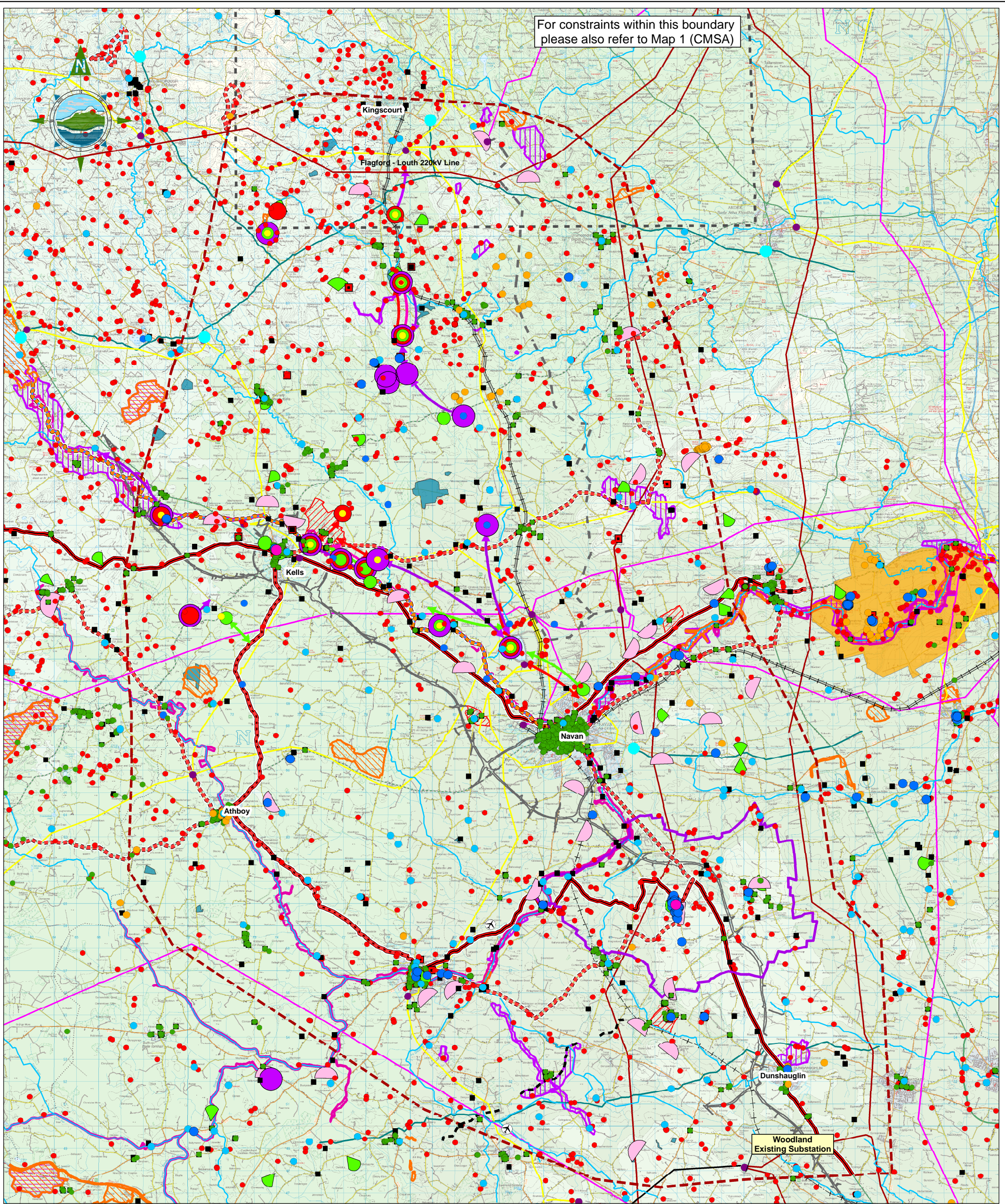


For constraints within this boundary please also refer to Map 1 (CMSA)



Legend

- Meath Study Area (MSA)
- Cavan Monaghan Study Area (CMSA)
- Urban Areas
- Railway Track
- Planned Navan Line (Disused Railway Track)
- Electricity Substation
- 38 kV Line
- 110 kV Line
- 220 kV Line
- 400 kV Line
- 110 kV Transmission Line Granted but Not Constructed
- Gas Station
- Gas Pipeline
- M3
- ✈ Airfield
- Landmarks (Meath Landscape Character Assessment)
- Key Viewpoints (Meath Landscape Character Assessment)
- Scenic Views (Meath County Development Plan 2007 - 2013)
- Landscape Conservation Area
- Driving Routes (Meath Landscape Character Assessment)
- Existing Paths and Cycle Routes (Meath Landscape Character Assessment)
- Proposed Paths and Cycle Routes (Meath Landscape Character Assessment)
- Historical Sites
- Swan sites recorded in Winter Survey Period 1: 2007/08
- Swan sites recorded in Winter Survey Period 2: 2008/2009
- Swan sites recorded in Winter Survey Period 3: 2009/2010
- Swan sites recorded in Winter Survey Period 4: 2010/2011
- ▶ Flight Lines 2007/08
- ▶ Flight Lines 2008/09
- ▶ Flight Lines 2009/10
- ▶ Flight Lines 2010/11
- Natural Heritage Area/ Proposed Natural Heritage Area
- Candidate Special Area of Conservation
- Special Protection Area
- Discernible Sensitive Ecological Receptors
- Candidate World Heritage Sites
- National Monuments
- Potential National Monuments
- Preservation Orders
- National Inventory of Architectural Heritage
- RMP Sites
- Record of Protected Structures
- Architectural Conservation Areas
- Bru Na Boinne World Heritage Site
- Geological Interest Sites
- Ice limit marks
- Major Rivers


Scale @ A3: 1:160,000

0 0.5 1 2 3 4 5 Kilometres

| Issue | Date | Description | By | Chkd. |
|-------|----------|-------------|------|-------|
| A | 28.04.11 | Issued | A.G. | M.H. |

NOTES

- FIGURED DIMENSIONS ONLY TO BE TAKEN FROM THIS DRAWING
- DISCOVERY SERIES TILES USED: OS2628, OS2828, OS3028, OS2626, OS2826, OS3026, OS2624, OS2824, OS3024
- ALL LEVELS RELATE TO ORDNANCE SURVEY DATUM AT MALIN HEAD
- DESIGNATED CONSERVATION AREAS DATA SOURCED FROM NPWS
- WHIFFER SWANS DATA BASED ON SITE SURVEYS
- GEOLOGICAL DATA SOURCED FROM GSI
- RMP SITES, NATIONAL MONUMENTS AND PRESERVATION ORDERS SOURCED FROM THE DEPARTMENT OF ENVIRONMENT, HERITAGE AND LOCAL GOVERNMENT
- ARCHAEOLOGICAL CONSERVATION AREAS SOURCED FROM THE COUNTY COUNCILS
- LANDSCAPE DATA SOURCED FROM COUNTY DEVELOPMENT PLANS
- POPULATION DENSITY DATA SOURCED FROM CSO


Client: 

Project: NORTH-SOUTH INTERCONNECTION DEVELOPMENT RE-EVALUATION REPORT

Title: CONSTRAINTS WITHIN THE MSA

Prepared by: A.Gruschka
Checked: M. Hogan
Date: April 2011

Project Director: Damien Grehan


Patrick J. Tobin & Co. Ltd.

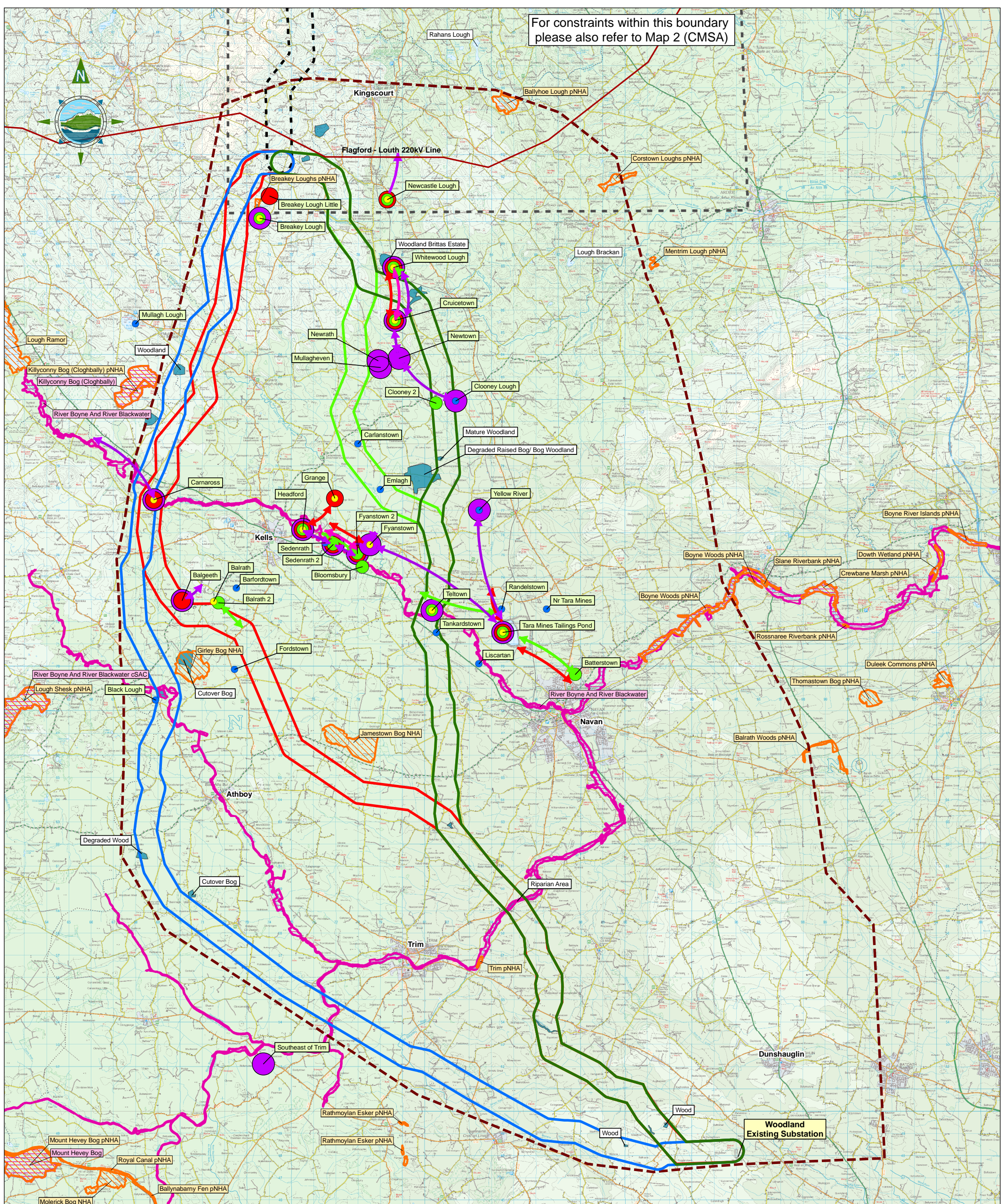
Consulting, Civil and Structural Engineers,
Block 10-4, Blanchardstown Corporate Park,
Dublin 15, Ireland.

tel: +353-(0)1-8030406
fax: +353-(0)1-8030409
e-mail: info@tobin.ie
www.tobin.ie

No part of this document may be reproduced or transmitted in any form or stored in an retrieval system of any nature without the written permission of Patrick J. Tobin & Co. Ltd. All copyright holder except as agreed for use on the project for which the document was originally issued.

Map 1 (MSA) A

6244



Legend

- Meath Study Area (MSA)
- Cavan Monaghan Study Area (CMSA)
- Route Corridor Option 1
- Route Corridor Option 2
- Route Corridor Option 3A
- Route Corridor Option 3B
- Route Corridor Option A/B/C
- Natural Heritage Area/ Proposed Natural Heritage Area
- Candidate Special Area of Conservation
- Special Protection Area
- Discernible Sensitive Ecological Receptors
- Historical Swan sites
- Swan sites recorded in Winter Survey Period 1: 2007/08
- Swan sites recorded in Winter Survey Period 2: 2008/2009
- Swan sites recorded in Winter Survey Period 3: 2009/2010
- Swan sites recorded in Winter Survey Period 4: 2010/2011
- Flight Lines 2007/08
- Flight Lines 2008/09
- Flight Lines 2009/10
- Flight Lines 2010/11

Scale @ A3: 1:160,000

0 0.5 1 2 3 4 5
Kilometres

| Issue | Date | Description | By | Chkd. |
|-------|----------|-------------|------|-------|
| A | 27-04-11 | Issued | A.G. | M.H. |

NOTES

- FIGURED DIMENSIONS ONLY TO BE TAKEN FROM THIS DRAWING
- DISCOVERY SERIES TILES USED: OS2628, OS2828, OS3028, OS2626, OS2826, OS3026, OS2624, OS2824, OS3024
- ALL LEVELS RELATE TO ORDNANCE SURVEY DATUM AT MALIN HEAD
- DESIGNATED CONSERVATION AREAS DATA SOURCED FROM NPWS
- WHOOPEE SWANS DATA BASED ON SITE SURVEYS

Client:

Project: NORTH-SOUTH INTERCONNECTION DEVELOPMENT
RE-EVALUATION REPORT

Title: ROUTE CORRIDOR OPTIONS FOR THE MSA WITH THE ECOLOGICAL CONSTRAINTS OF THE AREA

Prepared by: A.Gruschka
Checked: M. Hogan
Date: April 2011

Project Director: Damien Grehan

Patrick J. Tobin & Co. Ltd.

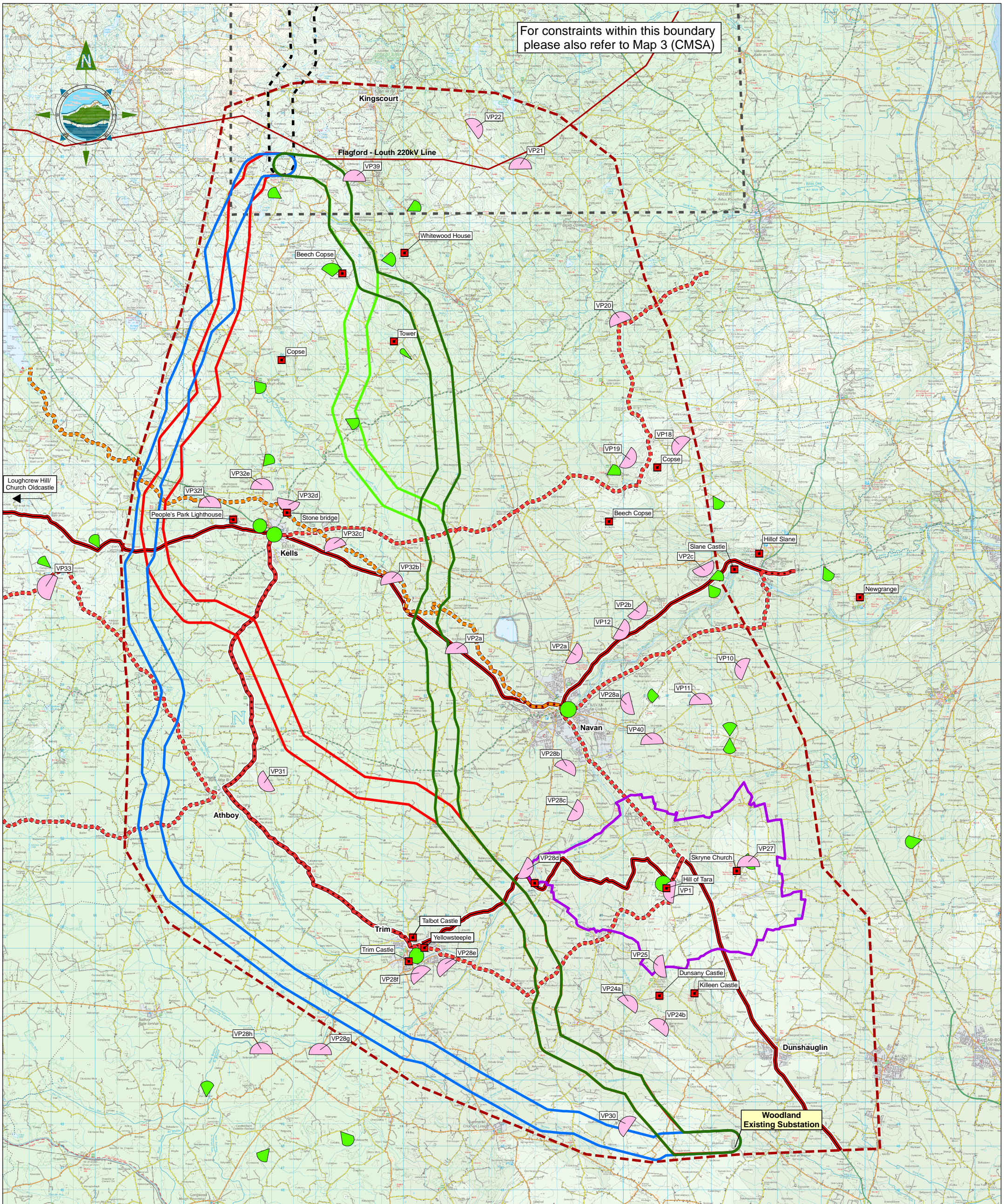
Consulting: Civil and Structural Engineers,
Block 10-4, Blanchardstown Corporate Park,
Dublin 15, Ireland

tel: +353 (0)1-8030406
fax: +353 (0)1-8030409
e-mail: info@tobin.ie
www.tobin.ie

No part of this document may be reproduced or transmitted in any form or stored in any retrieval system of any nature without the written permission of Patrick J. Tobin & Co. Ltd. as copyright holder except as agreed for use on the project for which the document was originally issued.

Map 2 (MSA) A

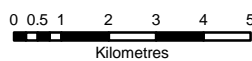
For constraints within this boundary please also refer to Map 3 (CMSA)



Legend

- - - Meath Study Area (MSA)
- - - Cavan Monaghan Study Area (CMSA)
- Route Corridor Option 1
- Route Corridor Option 2
- Route Corridor Option 3A
- Route Corridor Option 3B
- - - Route Corridor Option A/B/C
- Landmarks (Meath Landscape Character Assessment)
- Key Viewpoints (Meath Landscape Character Assessment)
- Scenic Viewpoints (Meath County Development Plan 2007 - 2013)
- Landscape Conservation Area
- Driving Routes (Meath Landscape Character Assessment)
- - - Existing Paths and Cycle Routes (Meath Landscape Character Assessment)
- - - Proposed Paths and Cycle Routes (Meath Landscape Character Assessment)

Scale @ A3: 1:160,000



| Issue | Date | Description | By | Chkd. |
|-------|----------|-------------|------|-------|
| A | 28-04-11 | Issued | A.G. | M.H. |

- NOTES**
- FIGURED DIMENSIONS ONLY TO BE TAKEN FROM THIS DRAWING
 - DISCOVERY SERIES TILES USED: OS2628, OS2628, OS3028, OS2626, OS2626, OS3026, OS2624, OS2824, OS3024
 - ALL LEVELS RELATE TO ORDNANCE SURVEY DATUM AT MALIN HEAD
 - LANDSCAPE DATA SOURCED FROM COUNTY DEVELOPMENT PLANS

Client:



Project:

NORTH-SOUTH INTERCONNECTION DEVELOPMENT

RE-EVALUATION REPORT

Title:

ROUTE CORRIDOR OPTIONS FOR THE MSA WITH THE LANDSCAPE CONSTRAINTS OF THE AREA

Prepared by: A.Gruschka
Checked: M. Hogan
Date: April 2011

Project Director: Damien Grehan



Consulting, Civil and Structural Engineers,
Block 10-4, Blanchardstown Corporate Park,
Dublin 15, Ireland

tel: +353-(0)1-8030406
fax: +353-(0)1-8030409
e-mail: info@tobin.ie
www.tobin.ie

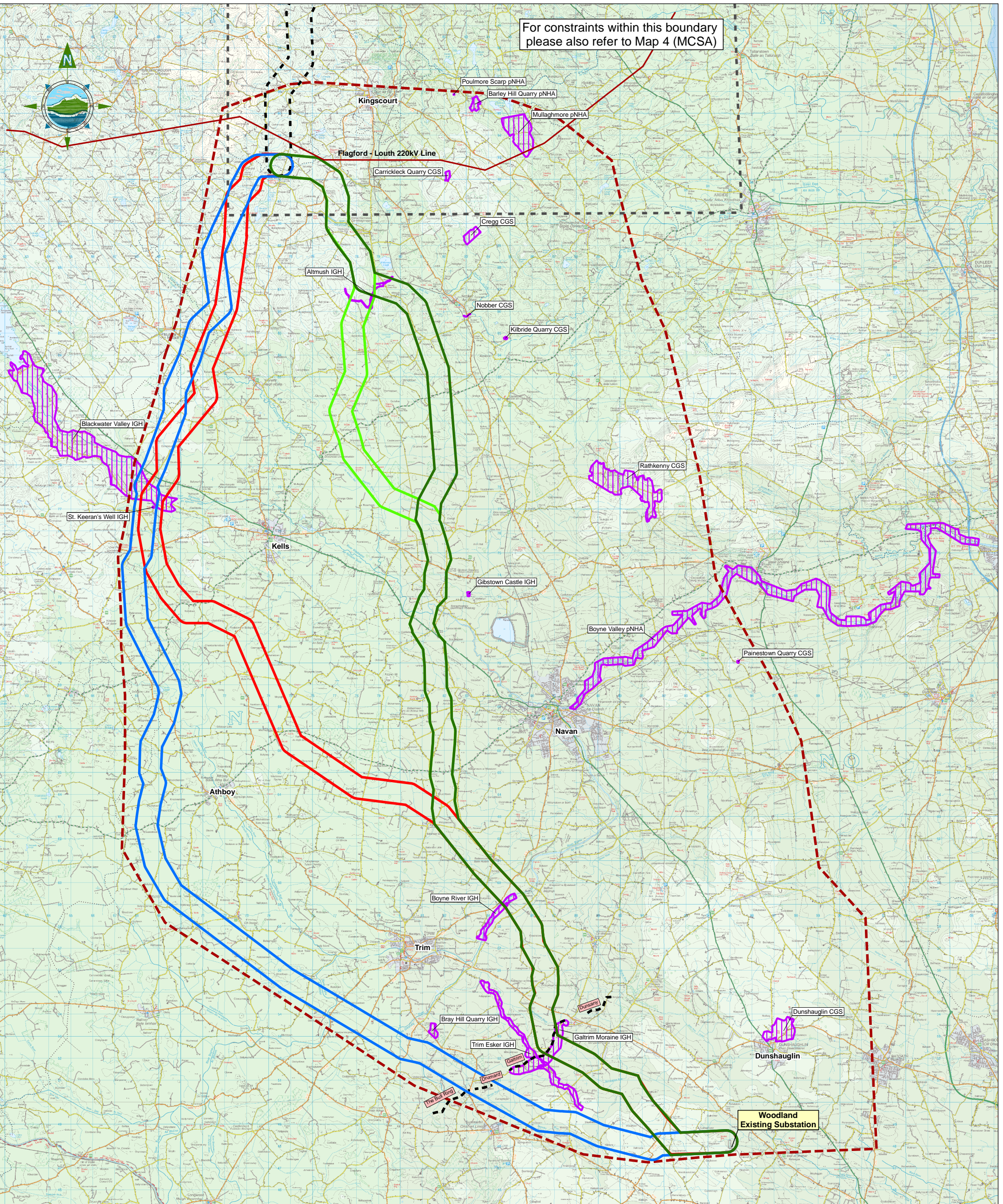
No part of this document may be reproduced or transmitted in any form or stored in any retrieval system of any nature without the written permission of Patrick J. Tobin & Co. Ltd. as copyright holder except as agreed for use on the project for which the document was originally issued.

Map 3 (MSA)

6244

A

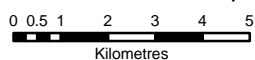
For constraints within this boundary please also refer to Map 4 (MCSA)



Legend

- Meath Study Area (MSA)
- Cavan Monaghan Study Area (CMSA)
- Route Corridor Option 1
- Route Corridor Option 2
- Route Corridor Option 3A
- Route Corridor Option 3B
- Route Corridor Option A/B/C
- Ice limit marks
- Geological Interest Sites

Scale @ A3: 1:160,000



| Issue | Date | Description | By | Chkd. |
|-------|----------|-------------|------|-------|
| A | 28-04-11 | Issued | A.G. | M.H. |

- NOTES**
- FIGURED DIMENSIONS ONLY TO BE TAKEN FROM THIS DRAWING
 - DISCOVERY SERIES TILES USED: OS2628, OS2828, OS3028, OS2626, OS2826, OS3026, OS2624, OS2824, OS3024
 - ALL LEVELS RELATE TO ORDNANCE SURVEY DATUM AT MALIN HEAD
 - GEOLOGICAL DATA SOURCED FROM GSI

Client:



Project:

NORTH-SOUTH INTERCONNECTION DEVELOPMENT
RE-EVALUATION REPORT

Title:

ROUTE CORRIDOR OPTIONS FOR THE MSA WITH THE GEOLOGY CONSTRAINTS OF THE AREA

Prepared by: A.Gruschka
Checked: M. Hogan
Date: April 2011

Project Director: Damien Grehan



Consulting, Civil and Structural Engineers,
Block 10-4, Blanchardstown Corporate Park,
Dublin 15, Ireland

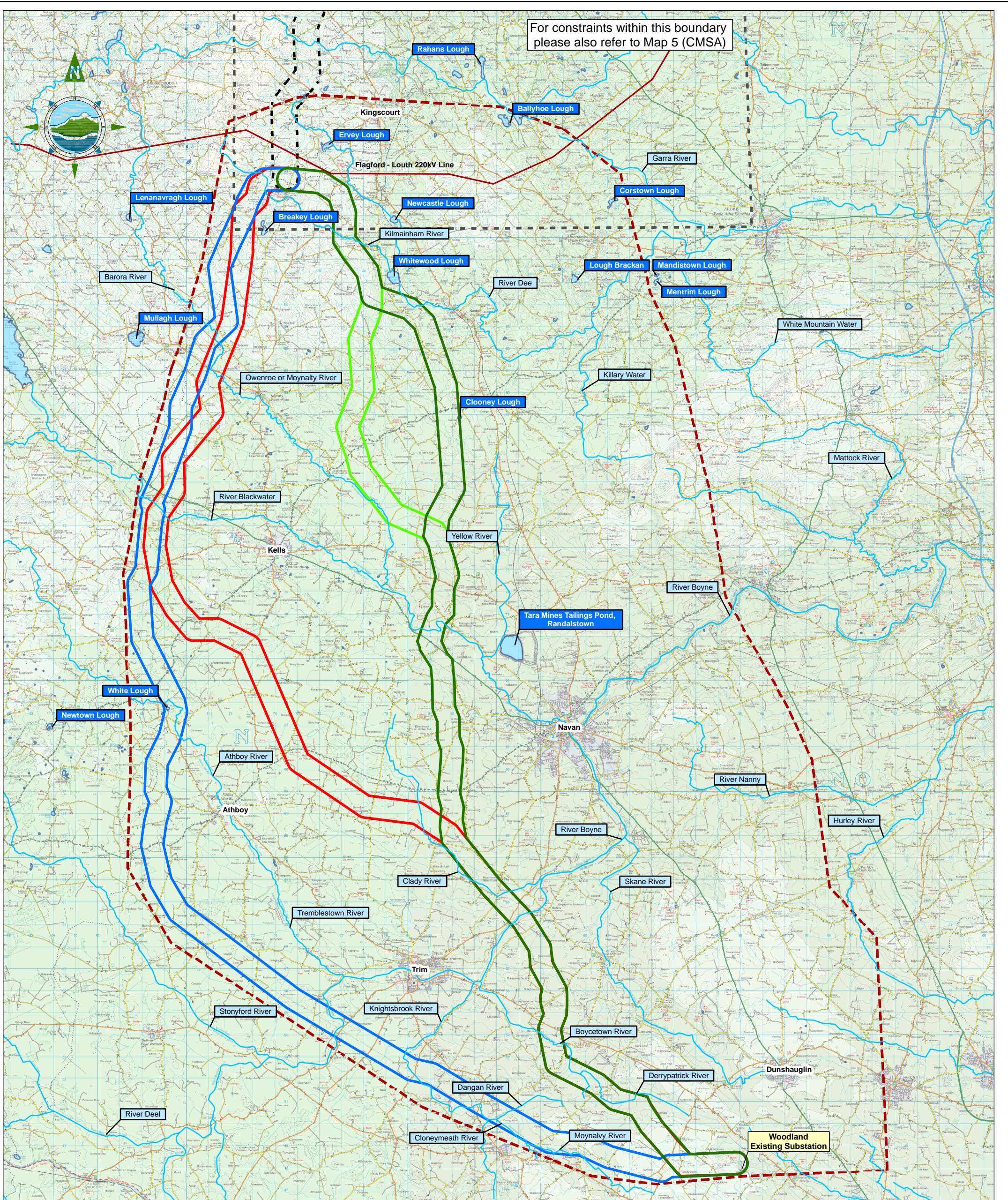
tel: +353-(0)1-8030406
fax: +353-(0)1-8030409
e-mail: info@tobin.ie
www.tobin.ie

No part of this document may be reproduced or transmitted in any form or stored in any retrieval system of any nature without the written permission of Patrick J. Tobin & Co. Ltd. All copyright held except as agreed for use on the project for which the document was originally issued.

Map 4 (MSA)

6244

A



- Legend**
- Meath Study Area (MSA)
 - Cavan Monaghan Study Area (CMSA)
 - Route Corridor Option 1
 - Route Corridor Option 2
 - Route Corridor Option 3A
 - Route Corridor Option 3B
 - Route Corridor Option A/B/C
 - Major Rivers
 - Major Lakes
 - River Boyne Major River in Proximity to Study Area
 - White Lough Lake in Proximity to Study Area

Scale @ A3: 1:160,000

0 0.5 1 2 3 4 5
Kilometres

| Issue | Date | Description | By | Chkd |
|-------|----------|-------------|------|------|
| A | 28.04.11 | Issued | A.G. | M.H. |

NOTES

- FIGURED DIMENSIONS ONLY TO BE TAKEN FROM THIS DRAWING
- DISCOVERY SERIES TILES USED: OS2626, OS2628, OS3026, OS2626, OS2626, OS3026, OS2624, OS2824, OS3024
- ALL LEVELS RELATE TO ORDINANCE SURVEY DATUM AT MALIN HEAD

Client:

Project: NORTH-SOUTH INTERCONNECTION DEVELOPMENT
RE-EVALUATION REPORT

Title: ROUTE CORRIDOR OPTIONS FOR THE MSA WITH THE WATER CONSTRAINTS OF THE AREA

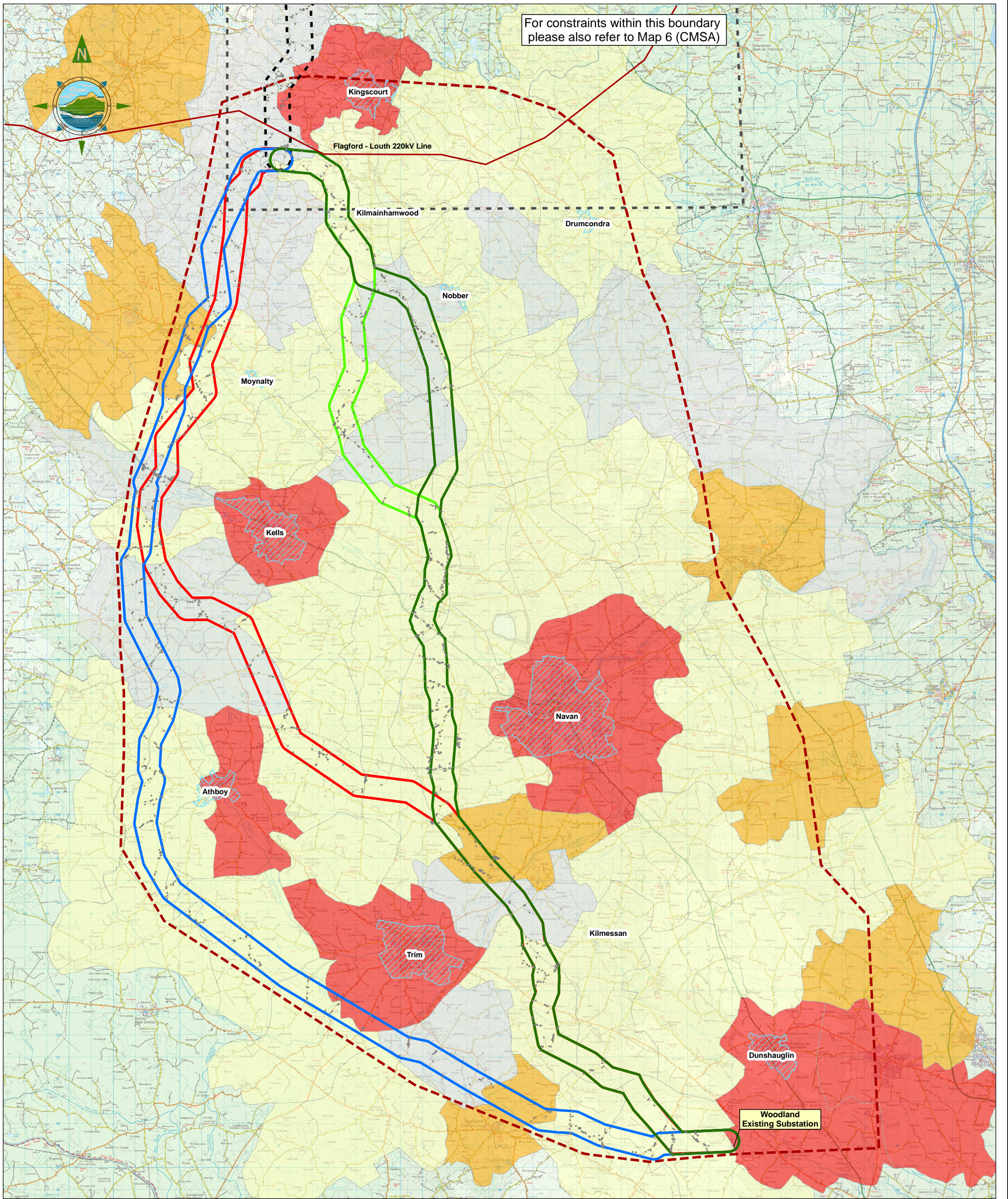
Prepared by: A.Gruschka
Checked: M.Hogan
Date: April 2011
Project Director: Damien Grehan

Patrick J. Tobin & Co. Ltd.

Consulting, Civil and Structural Engineers,
Block 10-4, Blanchardstown Corporate Park,
Dublin 15, Ireland
tel: +353 (0) 1-8030406
fax: +353 (0) 1-8030409
e-mail: info@tobin.ie
www.tobin.ie

No part of this document may be reproduced or transmitted in any form or stored in an retrieval system of any nature without the written permission of Patrick J. Tobin & Co. Ltd. All copyright holder except as agreed for use on the project for which the document was originally issued.

Map 5 (MSA) 6244
A



Legend

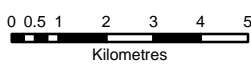
- Meath Study Area (MSA)
- Cavan Monaghan Study Area (CMSA)
- Route Corridor Option 1
- Route Corridor Option 2
- Route Corridor Option 3A
- Route Corridor Option 3B
- Route Corridor Option A/B/C
- GeoDirectory (March 2011)
- Urban Areas

Persons per square kilometre

- 10 < 25
- 25 < 50
- 50 < 100
- 100+

(as shown in Figure 2, Population density of Electoral Divisions, 2006, CSO)

Scale @ A3: 1:160,000



| Issue | Date | Description | By | Chkd. |
|-------|----------|-------------|------|-------|
| A | 28-04-11 | Issued | A.G. | M.H. |

- NOTES**
1. FIGURED DIMENSIONS ONLY TO BE TAKEN FROM THIS DRAWING
 2. DISCOVERY SERIES TILES USED: OS2628, OS2828, OS3028, OS2626, OS2826, OS3026, OS2624, OS2824, OS3024
 3. ALL LEVELS RELATE TO ORDNANCE SURVEY DATUM AT MALIN HEAD
 4. POPULATION DENSITY SOURCED FROM CSO

Client:

Project: NORTH-SOUTH INTERCONNECTION DEVELOPMENT
RE-EVALUATION REPORT

Title: ROUTE CORRIDOR OPTIONS FOR THE MSA WITH THE SETTLEMENT CONSTRAINTS AND POPULATION DENSITIES OF THE AREA

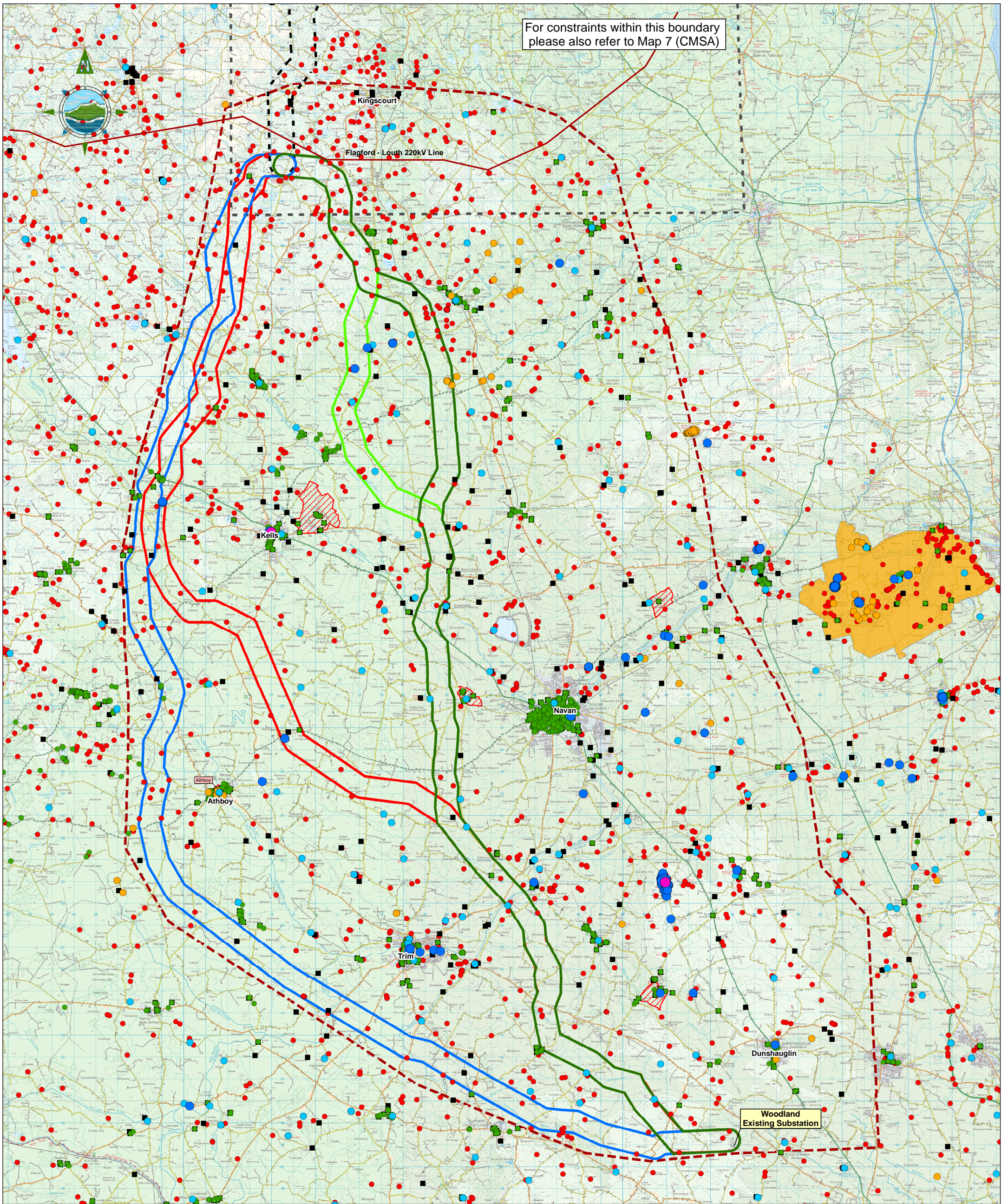
| | | |
|-------------------|----------|---------------|
| Prepared by: | Checked: | Date: |
| A.Gruschka | M. Hogan | April 2011 |
| Project Director: | | Damien Grehan |

Patrick J. Tobin & Co. Ltd.

Consulting, Civil and Structural Engineers,
Block 10-4, Blanchardstown Corporate Park,
Dublin 15, Ireland

tel: +353-(0)1-8030406
fax: +353-(0)1-8030409
e-mail: info@tobin.ie
www.tobin.ie

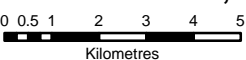
For constraints within this boundary please also refer to Map 7 (CMSA)



Legend

- Meath Study Area (MSA)
- Cavan Monaghan Study Area (CMSA)
- Route Corridor Option 1
- Route Corridor Option 2
- Route Corridor Option 3A
- Route Corridor Option 3B
- Route Corridor Option A/B/C
- Candidate World Heritage Sites
- National Monuments
- Potential National Monuments
- Preservation Orders
- National Inventory of Architectural Heritage
- RMP Sites
- Record of Protected Structures
- Architectural Conservation Areas
- Bru Na Boinne World Heritage Site

Scale @ A3: 1:160,000



| Issue | Date | Description | By | Chkd. |
|-------|----------|-------------|------|-------|
| A | 28-04-11 | Issued | A.G. | M.H. |

NOTES
 1. FIGURED DIMENSIONS ONLY TO BE TAKEN FROM THIS DRAWING
 2. DISCOVERY SERIES TILES USED: OS2628, OS2828, OS3028, OS2626, OS2826, OS3026, OS2624, OS2824, OS3024
 3. ALL LEVELS RELATE TO ORDNANCE SURVEY DATUM AT MALIN HEAD
 4. RMP SITES, NATIONAL MONUMENTS AND PRESERVATION ORDERS SOURCED FROM THE DEPARTMENT OF ENVIRONMENT, HERITAGE AND LOCAL GOVERNMENT
 5. ARCHAEOLOGICAL CONSERVATION AREAS SOURCED FROM THE COUNTY COUNCILS



Client: EIRGRID
 Project: NORTH-SOUTH INTERCONNECTION DEVELOPMENT
 RE-EVALUATION REPORT

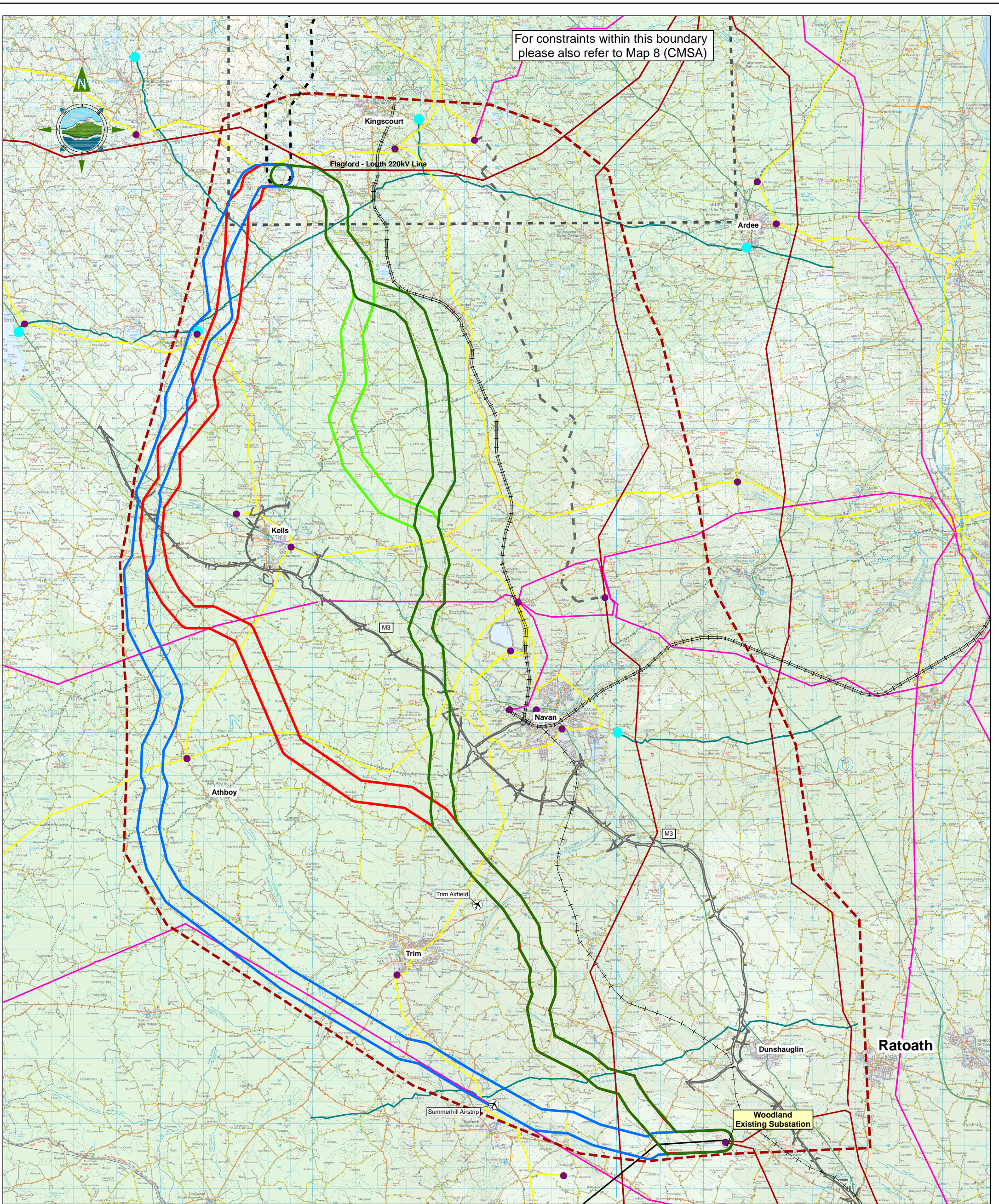
Title: ROUTE CORRIDOR OPTIONS FOR THE MSA WITH THE CULTURAL HERITAGE CONSTRAINTS OF THE AREA

Prepared by: A.Gruschka
 Checked: M. Hogan
 Date: April 2011
 Project Director: Damien Grehan



Consulting, Civil and Structural Engineers,
 Block 10-4, Blanchardstown Corporate Park,
 Dublin 15, Ireland
 Tel: +353-(0)1-8030406
 Fax: +353-(0)1-8030409
 E-mail: info@tobin.ie
 www.tobin.ie

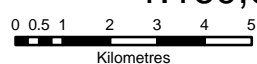
No part of this document may be reproduced or transmitted in any form or stored in any retrieval system of any nature without the written permission of Patrick J. Tobin & Co. Ltd. All copyright holder except as agreed for use on the project for which the document was originally issued.



Legend

- Meath Study Area (MSA)
- Cavan Monaghan Study Area (CMSA)
- Route Corridor Option 1
- Route Corridor Option 2
- Route Corridor Option 3A
- Route Corridor Option 3B
- Route Corridor Option A/B/C
- Planned Navan Line (Disused Railway Track)
- Railway Track
- Electricity Substation
- 38 kV Line
- 110 kV Line
- 220 kV Line
- 400 kV Line
- 110 kV Transmission Line Granted but Not Constructed
- Gas Station
- Gas Pipeline
- M3
- Airfield

Scale @ A3: 1:160,000



| Issue | Date | Description | By | Chkd. |
|-------|----------|-------------|------|-------|
| A | 28-04-11 | Issued | A.G. | M.H. |

- NOTES**
1. FIGURED DIMENSIONS ONLY TO BE TAKEN FROM THIS DRAWING
 2. DISCOVERY SERIES TILES USED: OS2628, OS2828, OS3028, OS2626, OS2826, OS3026, OS2624, OS2824, OS3024
 3. ALL LEVELS RELATE TO ORDNANCE SURVEY DATUM AT MALIN HEAD
 4. AIR FIELDS DATA BASED ON SURVEYS
 5. GAS NETWORK SOURCED FROM BORD GAIS EIREANN
 6. POWER NETWORK SOURCED FROM ESB NETWORKS
 7. M3 SOURCED FROM NRA

Client:

Project: NORTH-SOUTH INTERCONNECTION DEVELOPMENT
RE-EVALUATION REPORT

Title: ROUTE CORRIDOR OPTIONS FOR THE MSA WITH THE UTILITIES AND INFRASTRUCTURE CONSTRAINTS OF THE AREA

Prepared by: A.Gruschka
Checked: M. Hogan
Date: April 2011

Project Director: Damien Grehan

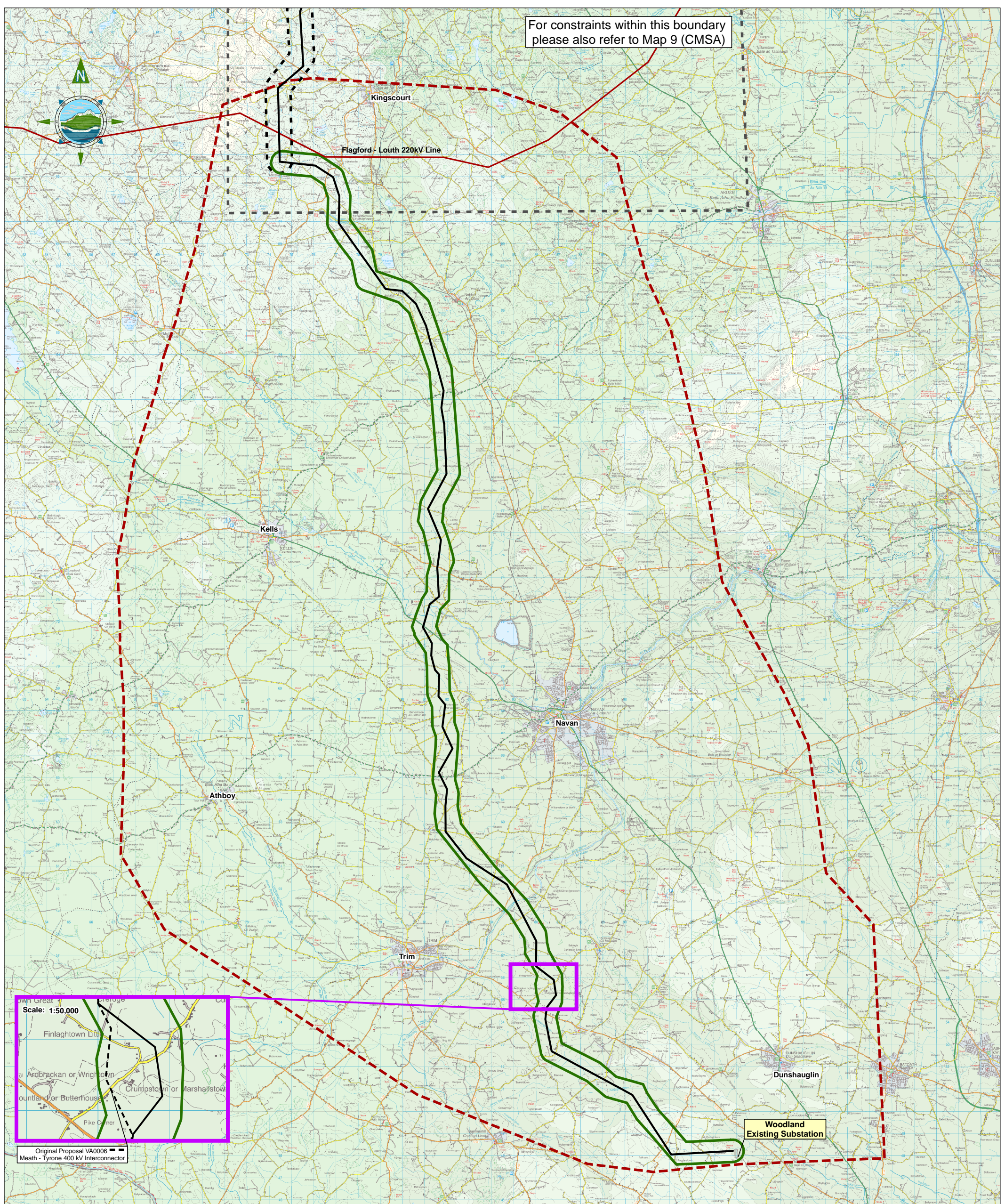
Patrick J. Tobin & Co. Ltd.

Consulting, Civil and Structural Engineers,
Block 10-4, Blanchardstown Corporate Park,
Dublin 15, Ireland

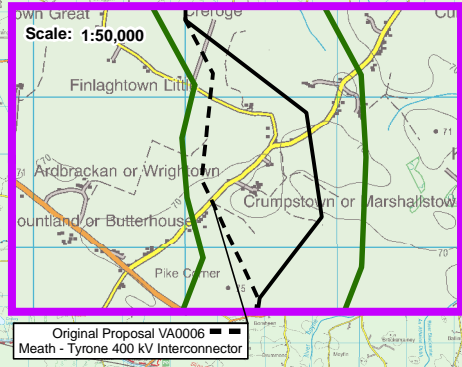
tel: +353-(0)1-8030406
fax: +353-(0)1-8030409
e-mail: info@tobin.ie
www.tobin.ie

No part of this document may be reproduced or transmitted in any form or stored in any retrieval system of any nature without the written permission of Patrick J. Tobin & Co. Ltd. as copyright holder except as agreed for use on the project for which the document was originally issued.

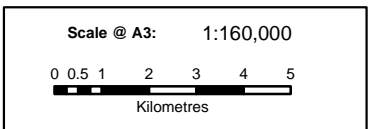
Map 8 (MSA) A



For constraints within this boundary please also refer to Map 9 (CMSA)



- Legend**
- Meath Study Area (MSA)
 - Cavan Monaghan Study Area (CMSA)
 - Route Corridor Option 3B
 - Route Corridor Option A
 - Preliminary Indicative Line Route
 - Route Amended



| Issue | Date | Description | By | Chkd. |
|-------|----------|-------------|------|-------|
| A | 28-04-11 | Issued | A.G. | M.H. |

- NOTES**
1. FIGURED DIMENSIONS ONLY TO BE TAKEN FROM THIS DRAWING
 2. DISCOVERY SERIES TILES USED: OS2628, OS2828, OS3028, OS2626, OS2826, OS3026, OS2624, OS2824, OS3024
 3. ALL LEVELS RELATE TO ORDNANCE SURVEY DATUM AT MALIN HEAD
 4. DESIGNATED CONSERVATION AREAS DATA SOURCED FROM NPWS
 5. WHOPPER SWANS DATA BASED ON SITE SURVEYS

Client:

Project: **NORTH-SOUTH INTERCONNECTION DEVELOPMENT**

RE-EVALUATION REPORT

Title: **PRELIMINARY INDICATIVE LINE ROUTE (MSA)**

Prepared by: A.Gruschka
 Checked: M. Hogan
 Date: April 2011
 Project Director: Damien Grehan

Patrick J. Tobin & Co. Ltd.

Consulting, Civil and Structural Engineers,
 Block 10-14, Blanchardstown Corporate Park,
 Dublin 15, Ireland

tel: +353 (0)1-8030400
 fax: +353 (0)1-8030409
 e-mail: info@tobin.ie
 www.tobin.ie

No part of this document may be reproduced or transmitted in any form or stored in any retrieval system of any nature without the written permission of Patrick J. Tobin & Co. Ltd. as copyright holder except as agreed for use on the project for which the document was originally issued.

Ordnance Survey Ireland Licence No EN 0016011 ©Ordnance Survey Ireland and Government of Ireland