

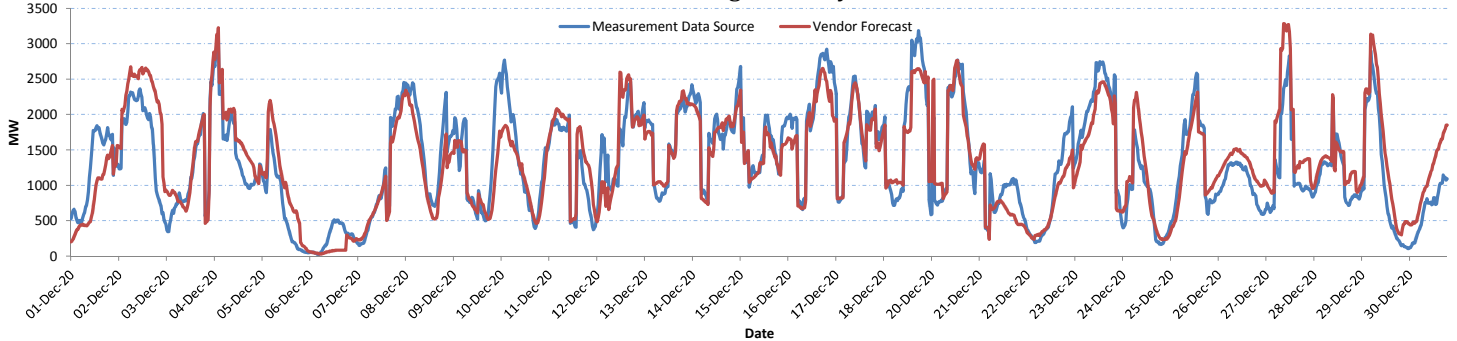
Monthly Wind Forecast Accuracy Report

December 2020

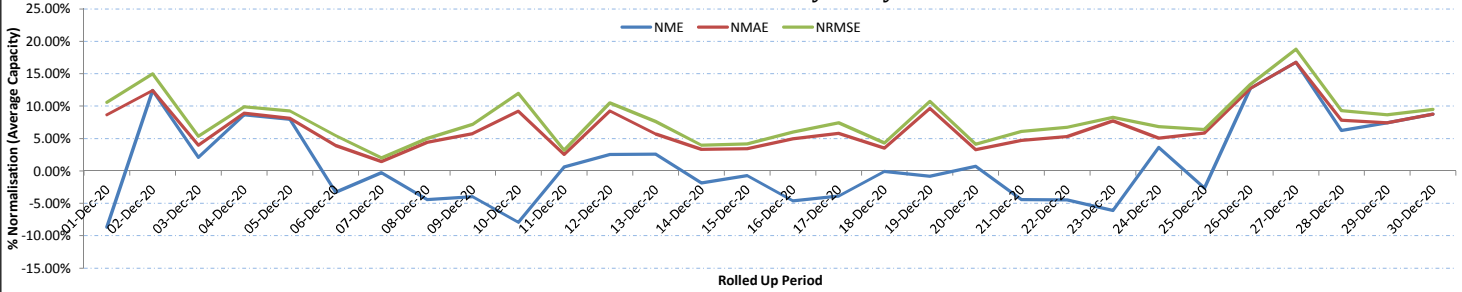


All-Island Wind Generation and Forecast Accuracy for Primary Vendor

Wind Forecasting Accuracy Trend

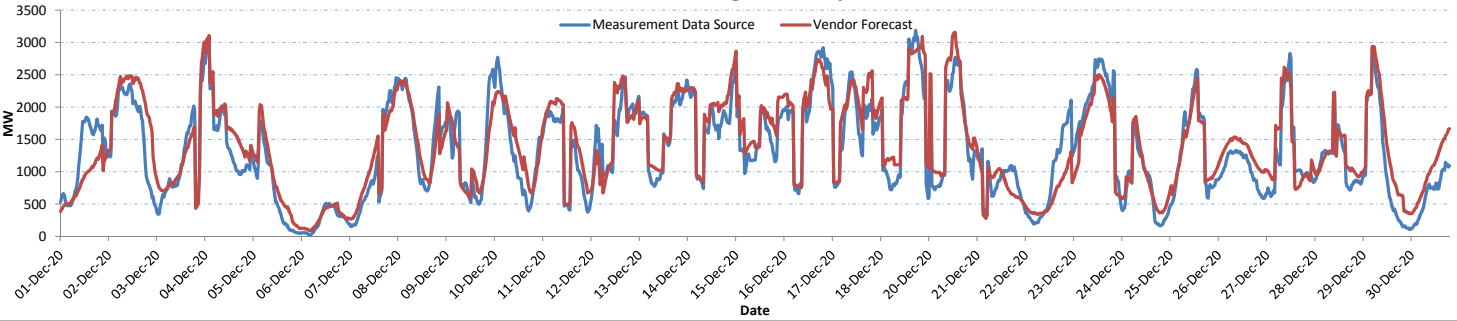


Wind Forecast Accuracy Analysis

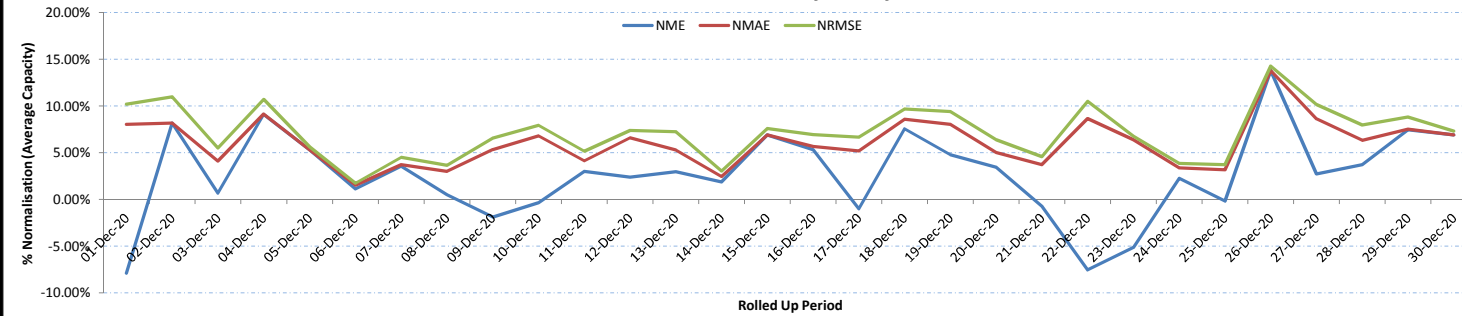


All-Island Wind Generation and Forecast Accuracy for Secondary Vendor

Wind Forecasting Accuracy Trend



Wind Forecast Accuracy Analysis



Notes:

Primary and Secondary Vendors provide EirGrid with 2 separate Wind Power Forecasts
 System Data is based on 30-minute average SCADA MW data
 NME is Normalised Mean Error, NMAE is Normalised Mean Absolute Error and NRMSE is Normalised Root Mean Squared Error
 All statistics reported are normalised to the average total system installed wind capacity for the period analysed