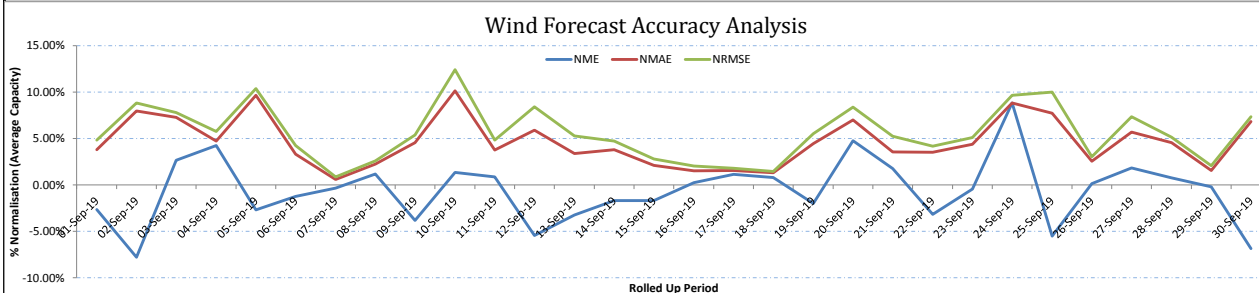
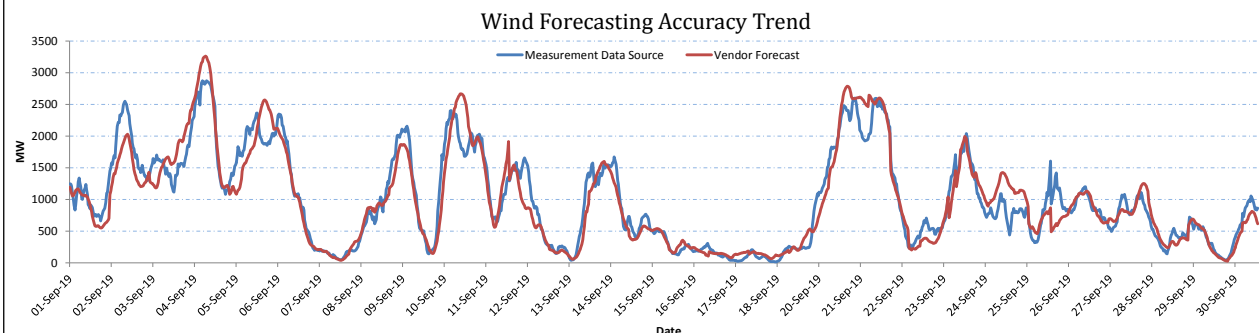


# Monthly Wind Forecast Accuracy Report

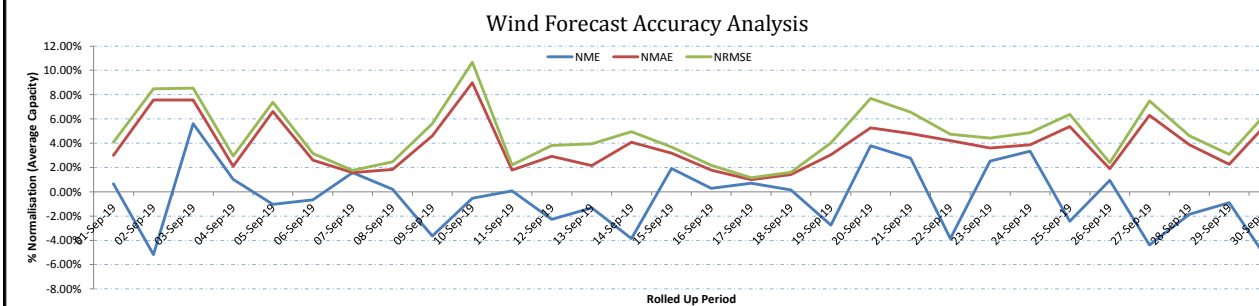
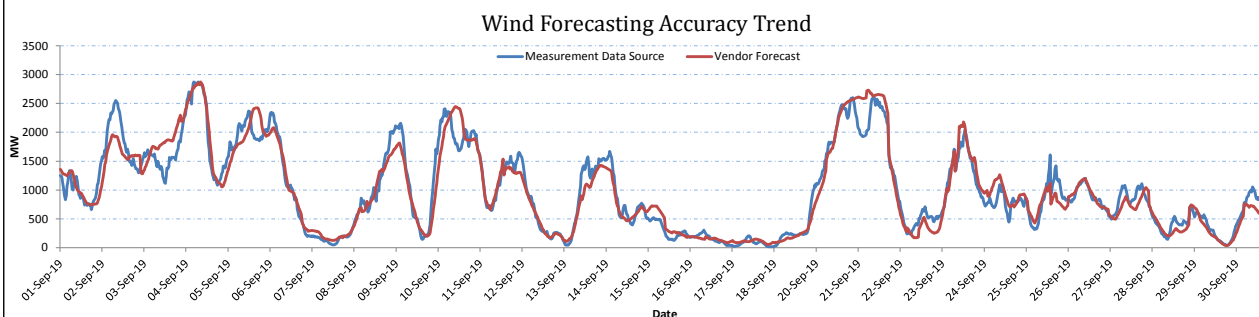
## September 2019



### All-Island Wind Generation and Forecast Accuracy for Primary Vendor



### All-Island Wind Generation and Forecast Accuracy for Secondary Vendor



#### Notes:

Primary and Secondary Vendors provide EirGrid with 2 separate Wind Power Forecasts  
 System Data is based on 30-minute average SCADA MW data  
 NME is Normalised Mean Error, NMAE is Normalised Mean Absolute Error and NRMSE is Normalised Root Mean Squared Error  
 All statistics reported are normalised to the average total system installed wind capacity for the period analysed