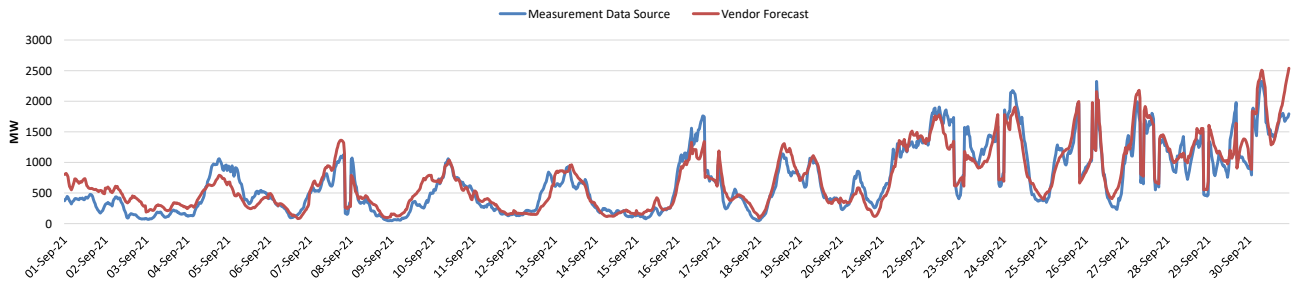


# Monthly Wind Forecast Accuracy Report September 2021

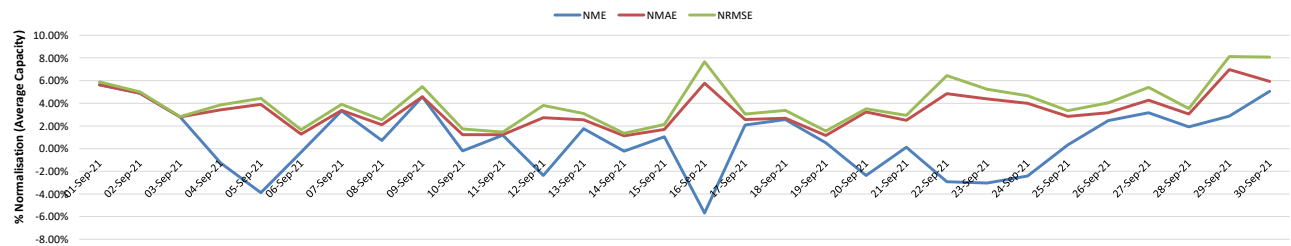


## All-Island Wind Generation and Forecast Accuracy for Primary Vendor

### Wind Forecasting Accuracy Trend

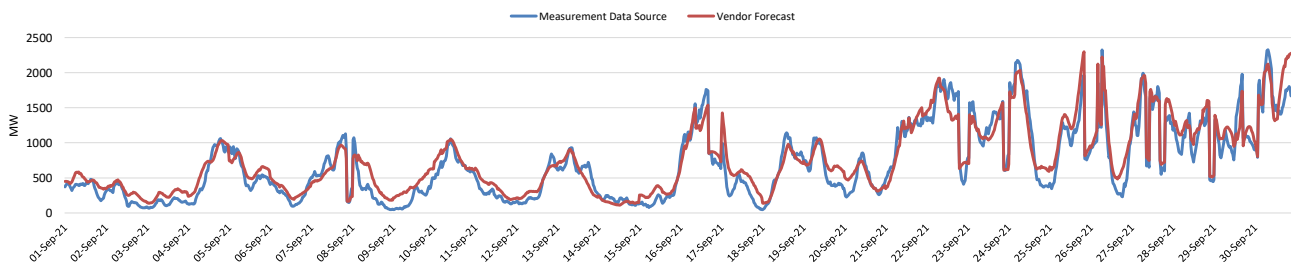


### Wind Forecast Accuracy Analysis

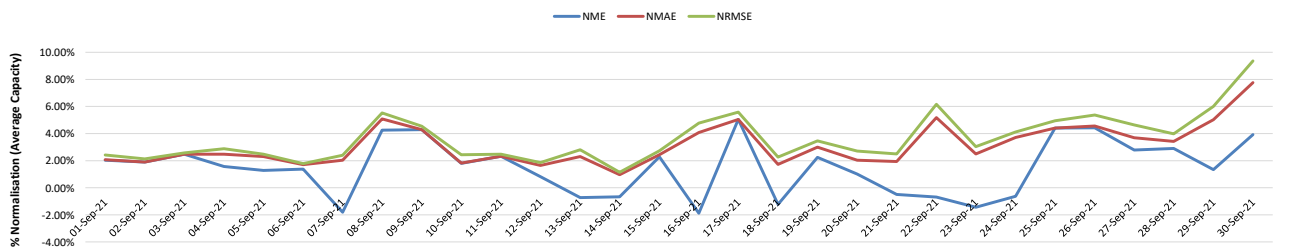


## All-Island Wind Generation and Forecast Accuracy for Secondary Vendor

### Wind Forecasting Accuracy Trend



### Wind Forecast Accuracy Analysis



### Notes:

Primary and Secondary Vendors provide EirGrid with 2 separate Wind Power Forecasts  
System Data is based on 30-minute average SCADA MW data  
NME is Normalised Mean Error, NMAE is Normalised Mean Absolute Error and NRMSE is Normalised Root Mean Squared Error  
All statistics reported are normalised to the average total system installed wind capacity for the period analysed